

WALLCOVERING

WOVENIMAGE.COM



MURA

Mura is an innovative wall covering that is design driven, cost effective and easy to install. It contains 60% post consumer recycled content with a low voc.

Mura is 1.9mm thick, which contributes to added acoustic properties. The face side has been designed to create a smooth clean designer look whilst the back has been engineered with a forgiving texture that can be adhered to a variety of surfaces.

Mura delivers an enriched finish that challenges the perception of traditional wall covering.

KEY APPLICATIONS

Mura is designed as a wall covering for sustainable interiors used in:

- Commercial offices
- Hotels
- Restaurants
- Retail
- Education
- Apartments
- Residential
- Cinemas, theaters, auditoriums

Mura is ideal as:

- An added acoustic floor to ceiling wall covering.
- A workstation screen fabric
- An operable wall/ partition cover

KEY BENEFITS:

EASY INSTALLATIONS-

Mura is light weight, easy to handle, adhere to install. We recommend a professional wall covering installer for optimum results. For an application guide and how-to video visit wovenimage.com

SEAMLESS FINISH-

Seams in Mura are almost invisible as the fine fibres scale.

Available as a continuous 25m roll, Mura is ideal for high floor to ceiling installations.

FLEXIBLE DESIGN-

Mura is a surface in itself with significant design potential to enable designers and manufactures to redefine, reinvent and reconfigure interior spaces.

COST EFFECTIVE-

Compared to other wall finishes Mura is an extremely price competitive solution.

FLAME RESISTANCE-

Mura achieves a number of international fire standards for a number of applications, including the ISO 9705: GROUP 1, AS3837 CLASSIFICATION: GROUP 1 (adhered to plasterboard), BS 476 PART 7: CLASS 2 (adhered to Gyprock EC08TM Fire), and the ASTM E84: CLASS 1 (adhered to plasterboard). See pages 3-4 for all specifications or visit us online to find downloadable reports.

IMPROVED INTERIORS-

Mura has acoustic benefits tested by RMIT to AS ISO 354- 2006.

It also achieves outstanding commercial performance results against Australian and International standards.

IDEAL PRINT AND EMOSS SURFACE-

Mura is available printed in an array of colourways and designs. It is also available embossed providing a subtle textured result. The perfect solution for adding contemporary design to an interior space.

ENVIRONMENTALLY SUSTAINABLE

Mura is another landmark product from Woven Image.

It demonstrates our ongoing commitment to environmental performance and sustainable interiors.

Mura is a low voc product made from recycled and recyclable PET (approx. 60% post consumer waste such as recycled PET bottles). The base fibre is certified to Oekotex standard 100 for meeting humanecological requirements, recognised by TESTex Zurich, Swiss Textile Institute.

For more information about the products in this brochure, please contact your Woven Image® Account Manager or visit us online.

WOVENIMAGE.COM





SPECIFICATIONS

PRODUCT/ COLLECTION:	MURA	MURA (SCREEN PRINTS)	MURA (DIGITAL PRINTS)
DESIGNER	WOVEN IMAGE	SEE INDIVIDUAL PRODUCT	SEE INDIVIDUAL PRODUCT
ORIGIN	MADE IN AUSTRALIA	MADE IN AUSTRALIA	MADE IN AUSTRALIA
SOLID COLOURS	14 SEE MURA COLOUR PALETTE (PAGE 5)	SEE INDIVIDUAL PRODUCT	SEE INDIVIDUAL PRODUCT
COMPOSITION	100% PET (60% RECYCLED)	100% PET (60% RECYCLED)	100% PET (60% RECYCLED)
WIDTH	1210MM (+/- 5%)	1210MM (+/- 5%)	BASE: 1210MM WIDE PRINT: 1200MM WIDE (+/- 5%)
WEIGHT	423G/LIN, 350G/M ²	423G/LIN, 350G/M ²	423G/LIN, 350G/M ²
THICKNESS	1.9MM (+/- 0.25MM)	1.9MM (+/- 0.25MM)	1.9MM (+/- 0.25MM)
PIECE LENGTHS / ROLLS AVAILABLE	6M 25M 110M	6M 25M	6M 25M

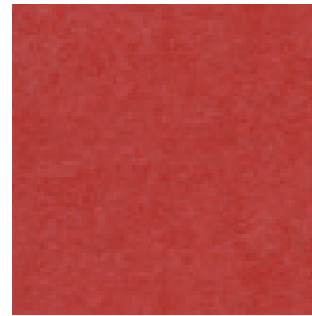
PERFORMANCE

COLOUR FASTNESS (LIGHT)	ISO 105-B02 RATING: 6	ISO 105-B02 RATING: 6	ISO 105-B02 RATING: 6-7
COLOUR FASTNESS (RUBBING)	ISO 105-X12 RATING: WET: 5, DRY: 5	ISO 105-X12 RATING: WET: 5, DRY: 5	AS 2001.4.3.1995: WET: 4-5, DRY: 4-5
FIRE TEST	ISO 9705: GROUP 1, AS3837 CLASSIFICATION: GROUP 1 (ADHERED TO PLASTERBOARD), BS 476 PART 7: CLASS 2 (ADHERED TO GYROCK EC08™ FIRE), ASTM E84: CLASS 1 (ADHERED TO PLASTERBOARD)	ISO 9705: GROUP 1, AS3837 CLASSIFICATION: GROUP 1 (ADHERED TO PLASTERBOARD), BS 476 PART 7: CLASS 2 (ADHERED TO GYROCK EC08™ FIRE), ASTM E84: CLASS 1 (ADHERED TO PLASTERBOARD)	MURA ACHIEVES: ISO 9705: GROUP 1, AS3837 CLASSIFICATION: GROUP 1 (ADHERED TO PLASTERBOARD), BS 476 PART 7: CLASS 2 (ADHERED TO GYROCK EC08™ FIRE), ASTM E84: CLASS 1 (ADHERED TO PLASTERBOARD)
SOUND ABSORPTION	AS ISO 354 - 2006 NRC VALUE: 0.10	AS ISO 354 - 2006 NRC VALUE: 0.10	AS ISO 354 - 2006 NRC VALUE: 0.10
VOC EMISSIONS	ASTM D5116 RATE: LESS THAN 0.02 MG/M ² /HR (7 DAYS)	ASTM D5116 RATE: LESS THAN 0.02 MG/M ² /HR (7 DAYS)	ASTM D5116 RATE: LESS THAN 0.03 MG/M ² /HR (7 DAYS)
ENVIRONMENTAL	MURA ACHIEVES GREEN TAG CERTIFICATION. LCA RATE: GOLD STREAMLINED GREEN RATE: LEVEL A	MURA SCREEN PRINTS ACHIEVE GREEN TAG CERTIFICATION. LCA RATE: BRONZE STREAMLINED GREEN RATE: LEVEL B	MURA ACHIEVES GREEN TAG CERTIFICATION. LCA RATE: GOLD STREAMLINED GREEN RATE: LEVEL A
	 	 	 

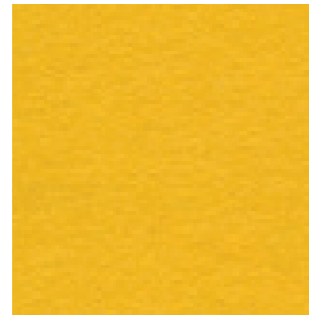
PRODUCT/ COLLECTION:	TERRAIN	ORBIT
DESIGNER	WOVEN IMAGE	WOVEN IMAGE
ORIGIN	MADE IN AUSTRALIA	MADE IN AUSTRALIA
SOLID COLOURS	2	3
COMPOSITION	50% FLAX, 50% POLYPROPYLENE	50% FLAX, 50% POLYPROPYLENE
DIMENSIONS	2800MM (+/- 5MM) x 1100MM (+/- 5MM)	BASE: 2800MM x 1100MM (+/- 5MM) PRINT: 2800MM x 1090MM (+/- 5MM)
WEIGHT	2KG PER PANEL	2KG PER PANEL
THICKNESS	2.5MM (+/- 7%)	2.5MM (+/- 7%)
PIECE LENGTHS / ROLLS AVAILABLE	PANELS SOLD INDIVIDUALLY	PANELS SOLD INDIVIDUALLY

COLOUR FASTNESS (LIGHT)	ISO 105-B02 RATING: 4-5	ISO 105-B02 RATING: 4-5
FIRE TEST	AS/NZS 3837 RATING: GROUP 3 ASTM E84 RATING: CLASS 2 OR B	AS/NZS 3837 RATING: GROUP 3 ASTM E84 RATING: CLASS 2 OR B
SOUND ABSORPTION	AS ISO 354 - 2006 NRC VALUE: 0.05	AS ISO 354 - 2006 NRC VALUE: 0.05
VOC EMISSIONS	ASTM D5116 RATE: LESS THAN 0.02 MG/M ² /HR (7 DAYS)	ASTM D5116 RATE: LESS THAN 0.02 MG/M ² /HR (7 DAYS)
		

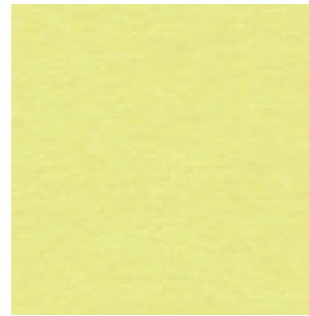
MURA



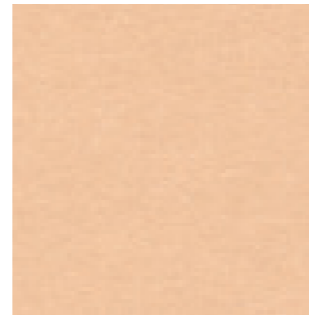
258



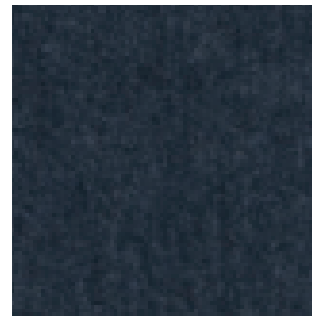
108



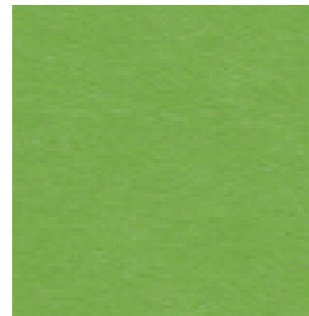
609 ●



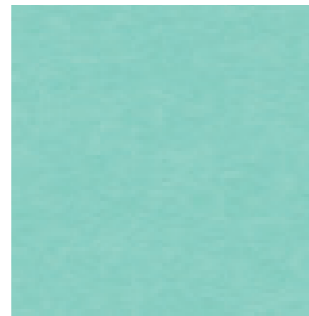
489 ●



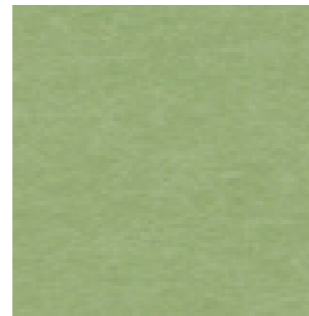
365



361



629 ●



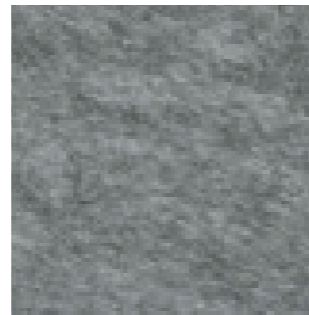
577 ●



542



444



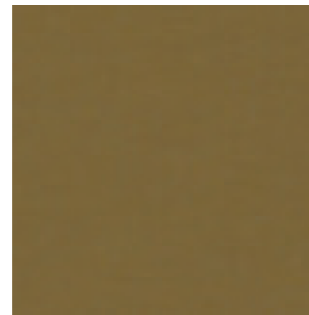
442



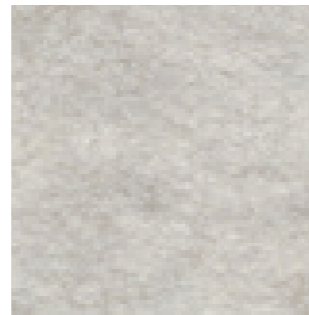
101



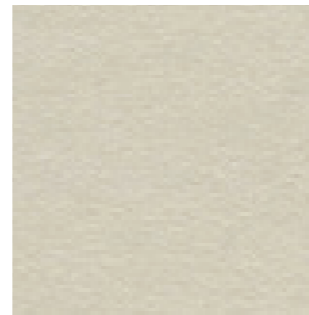
402



458 ●



454



908

DESIGNED BY

COLOURWAYS

PATTERN REPEAT

ROLL DIMENSIONS:

WOVEN IMAGE

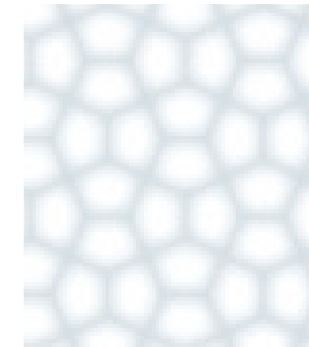
16 AVAILABLE ● NEW COLOURS

N/A

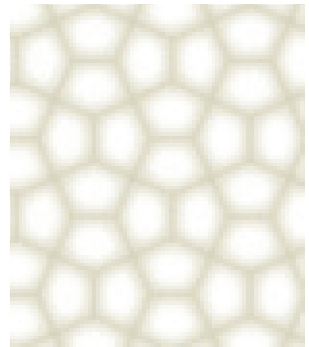
6M OR 25M ROLL: BASE - 1210MM WIDE (+/- 5%)

ACTUAL PRODUCT MAY VARY IN COLOUR FROM THE IMAGES SHOWN THROUGHOUT THIS BOOKLET
FOR ADDITIONAL PRODUCT INFORMATION SEE PAGE 3-4 OR VISIT WWW.WOVENIMAGE.COM

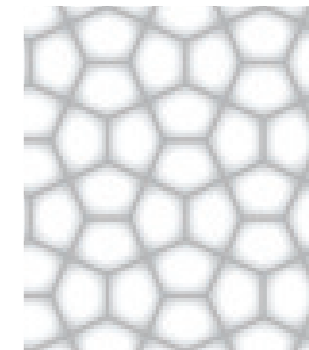
MURA GLOW



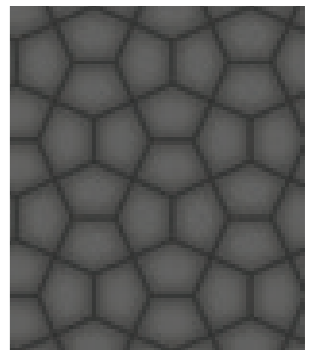
100



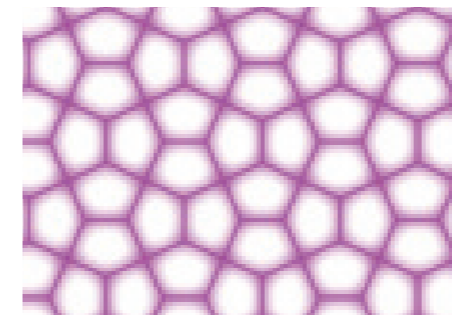
580



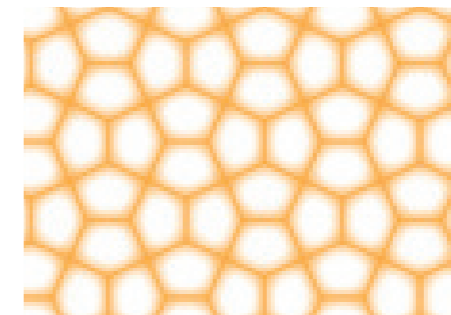
402



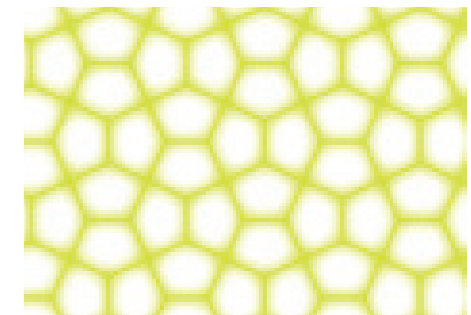
545



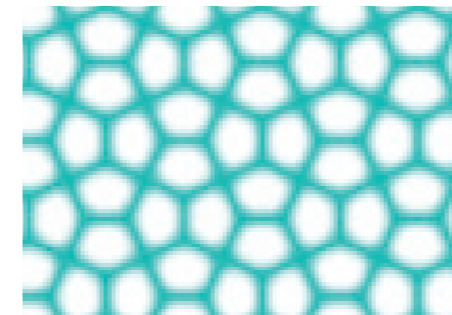
576



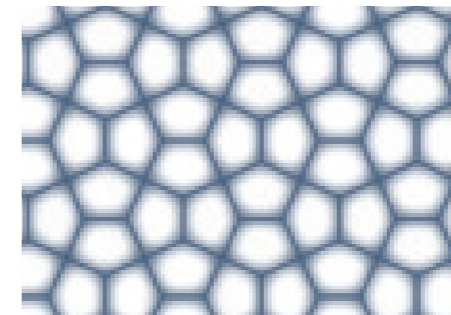
127



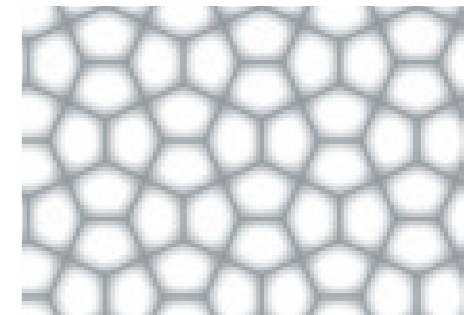
381



325



365



101

DESIGNED BY

COLOURWAYS

PATTERN REPEAT

ROLL DIMENSIONS:

BANG DESIGN FOR WOVEN IMAGE

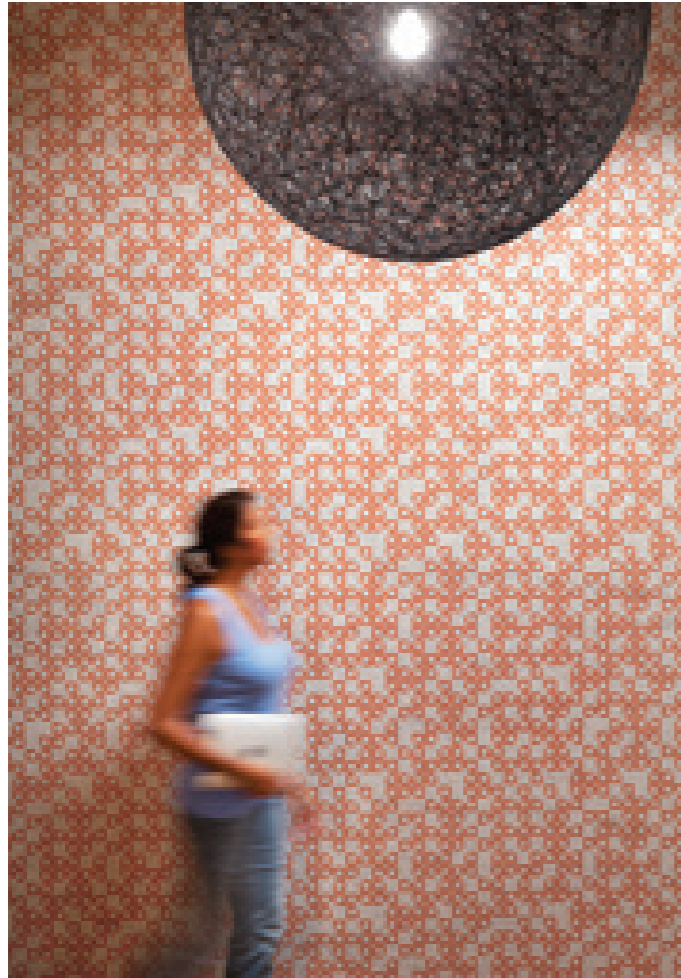
10 AVAILABLE

VERTICAL 6.8CM, HORIZONTAL 6.8CM

6M OR 25M ROLL: BASE - 1210MM WIDE (+/- 5%), PRINT - 1200MM WIDE (+/- 5%)

FOR ADDITIONAL PRODUCT INFORMATION SEE PAGE 3-4 OR VISIT WWW.WOVENIMAGE.COM

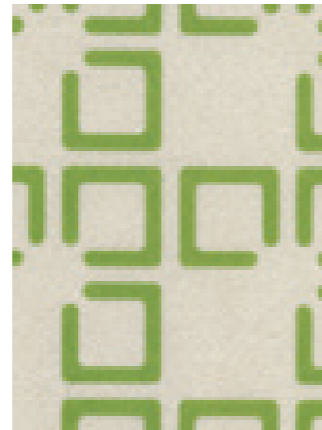
MURA QUATTRO



177



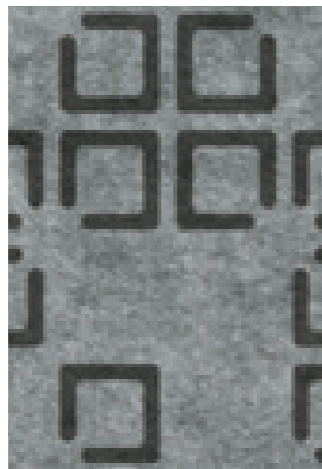
108



362



470



447



468

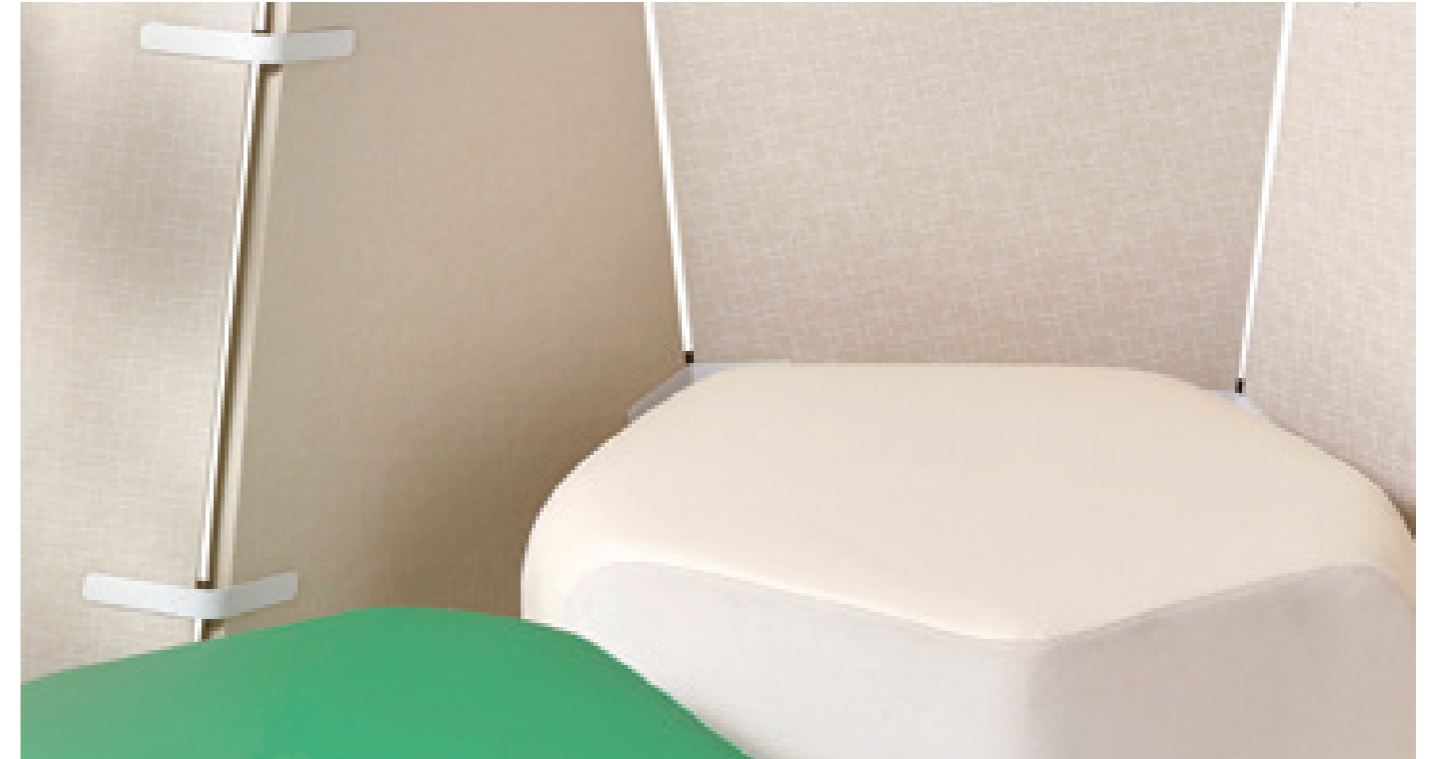


545

DESIGNED BY WOVEN IMAGE
COLOURWAYS 7 AVAILABLE
PATTERN REPEAT VERTICAL 75cm, HORIZONTAL 58cm
ROLL DIMENSIONS: 6m OR 25m ROLL: BASE & PRINT - 1210mm WIDE (+/- 5%)

FOR ADDITIONAL PRODUCT INFORMATION SEE PAGE 3-4 OR VISIT WWW.WOVENIMAGE.COM

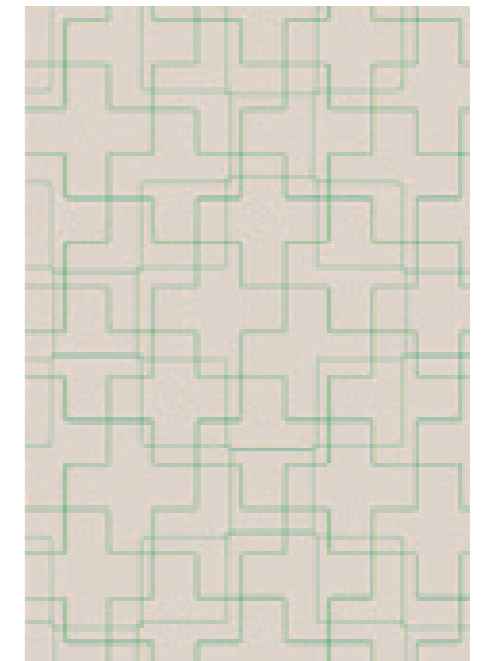
MURA KEY



100



500



348

DESIGNED BY WOVEN IMAGE
COLOURWAYS 3 AVAILABLE
PATTERN REPEAT VERTICAL 58.5cm, HORIZONTAL 58cm
ROLL DIMENSIONS: 6m OR 25m ROLL: BASE & PRINT - 1210mm WIDE (+/- 5%)

FOR ADDITIONAL PRODUCT INFORMATION SEE PAGE 3-4 OR VISIT WWW.WOVENIMAGE.COM

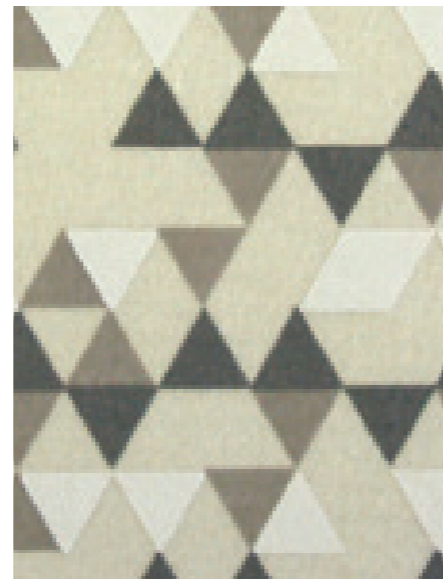
MURA VOLT



108



551



404

DESIGNED BY WOVEN IMAGE
COLOURWAYS 3 AVAILABLE
PATTERN REPEAT VERTICAL 8cm, HORIZONTAL 15.5cm
ROLL DIMENSIONS: 6M OR 25M ROLL: BASE & PRINT - 1210MM WIDE (+/- 5%)
FOR ADDITIONAL PRODUCT INFORMATION SEE PAGE 3-4 OR VISIT WWW.WOVENIMAGE.COM

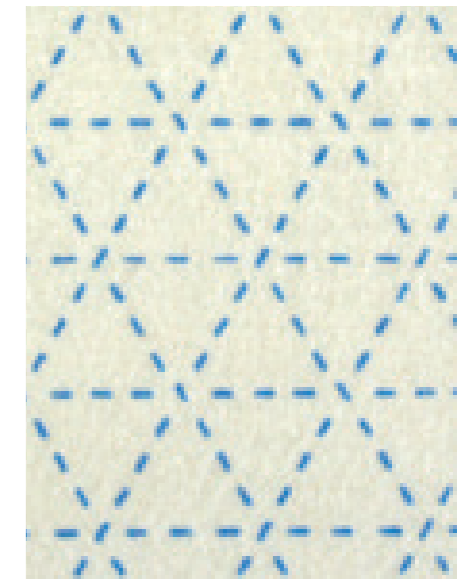
MURA DART



454



500



640

DESIGNED BY WOVEN IMAGE
COLOURWAYS 3 AVAILABLE
PATTERN REPEAT VERTICAL 3.5cm, HORIZONTAL 2.1cm
ROLL DIMENSIONS: 6M OR 25M ROLL: BASE & PRINT - 1210MM WIDE (+/- 5%)
FOR ADDITIONAL PRODUCT INFORMATION SEE PAGE 3-4 OR VISIT WWW.WOVENIMAGE.COM

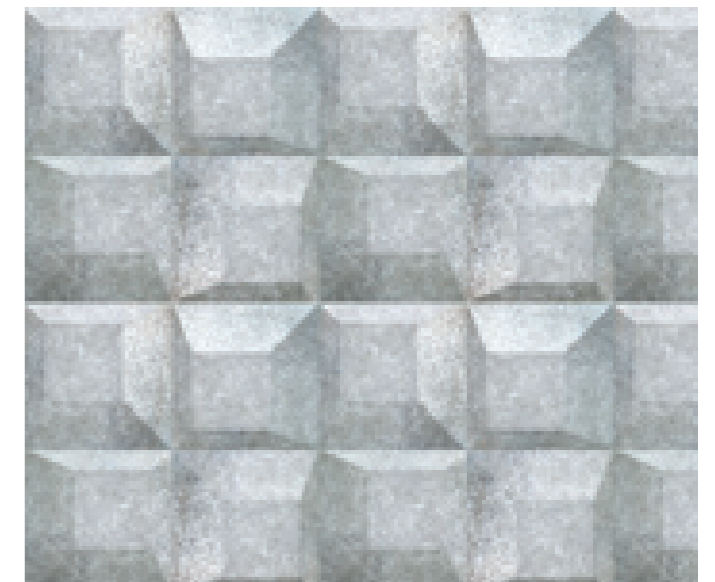
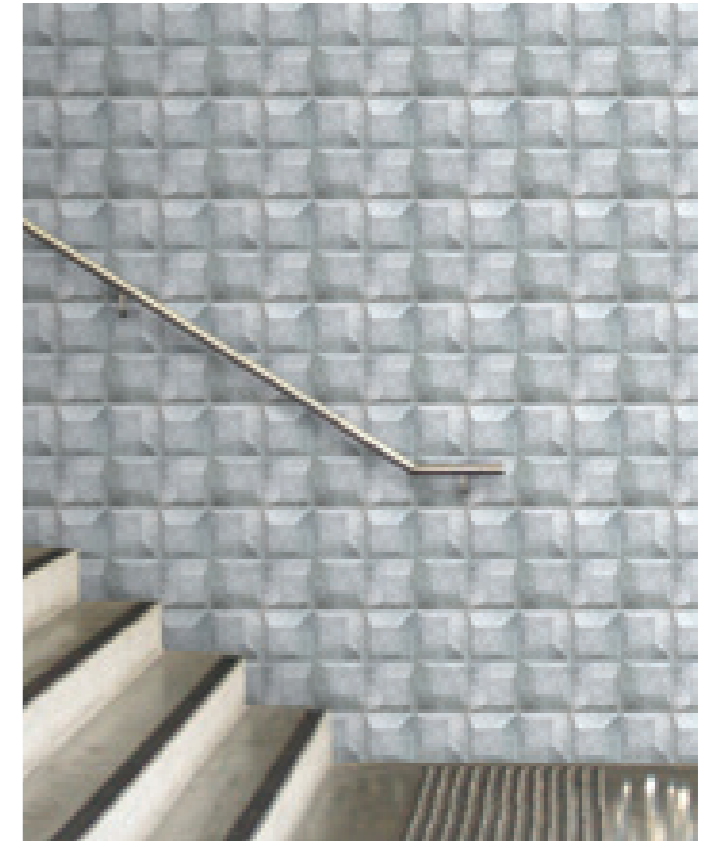
MURA PENTAGON



442

DESIGNED BY WOVEN IMAGE
 COLOURWAYS 1 AVAILABLE
 PATTERN REPEAT VERTICAL 33cm, HORIZONTAL 33.5cm
 ROLL DIMENSIONS: 6M OR 25M ROLL: BASE - 1210MM WIDE (+/- 5%), PRINT - 1200MM WIDE (+/- 5%)
 FOR ADDITIONAL PRODUCT INFORMATION SEE PAGE 3-4 OR VISIT WWW.WOVENIMAGE.COM

MURA HEX & MURA CUBE

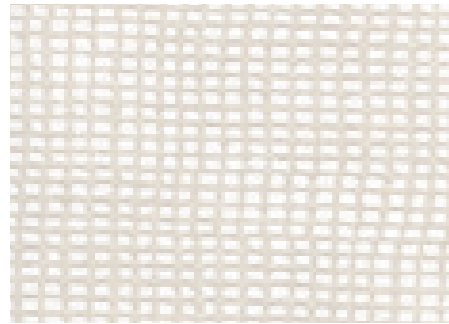


442 - HEX

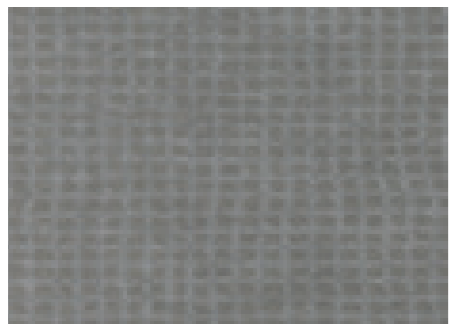
442 - CUBE

DESIGNED BY WOVEN IMAGE
 COLOURWAYS 1 AVAILABLE EACH
 PATTERN REPEAT VERTICAL 25.2cm, HORIZONTAL 22.2cm (HEX) - VERTICAL 30cm, HORIZONTAL 30cm (CUBE)
 ROLL DIMENSIONS: 6M OR 25M ROLL: BASE & PRINT - 1210MM WIDE (+/- 5%)
 FOR ADDITIONAL PRODUCT INFORMATION SEE PAGE 3-4 OR VISIT WWW.WOVENIMAGE.COM

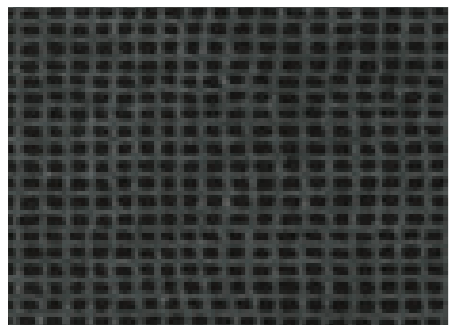
MURA KOME & MURA HAKU



KOME 500 (MATTE FINISH)



HAKU 447 (METALLIC FINISH)



HAKU 554 (GLOSS FINISH)

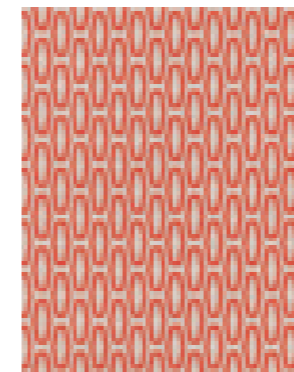


HAKU 201 (METALLIC FINISH)

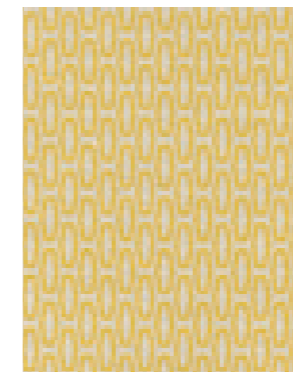


DESIGNED BY AKIRA ISOGAWA FOR WOVEN IMAGE
 COLOURWAYS 1 AVAILABLE (KOME), 3 AVAILABLE (HAKU)
 PATTERN REPEAT VERTICAL 72cm, HORIZONTAL 116cm
 ROLL DIMENSIONS: 6M OR 25M ROLL: BASE & PRINT - 1210MM WIDE (+/- 5%)
 FOR ADDITIONAL PRODUCT INFORMATION SEE PAGE 3-4 OR VISIT WWW.WOVENIMAGE.COM

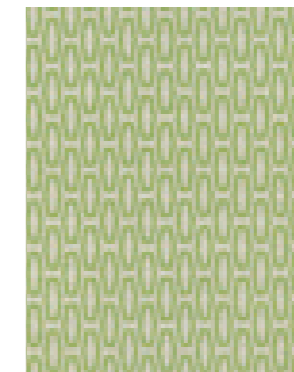
MURA OTTO



258



108



362



273



447



141



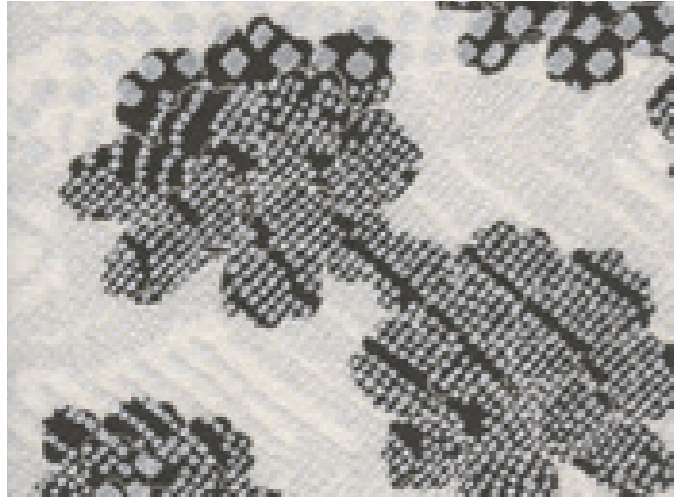
404



468

DESIGNED BY WOVEN IMAGE
 COLOURWAYS 8 AVAILABLE
 PATTERN REPEAT VERTICAL 2cm, HORIZONTAL 1.5cm
 ROLL DIMENSIONS: 6M OR 25M ROLL: BASE & PRINT - 1210MM WIDE (+/- 5%)
 FOR ADDITIONAL PRODUCT INFORMATION SEE PAGE 3-4 OR VISIT WWW.WOVENIMAGE.COM

MURA NAMI



440



500



DESIGNED BY AKIRA ISOGAWA FOR WOVEN IMAGE
COLOURWAYS 2 AVAILABLE
PATTERN REPEAT VERTICAL 72cm, HORIZONTAL 116cm
ROLL DIMENSIONS: 6M OR 25M ROLL: BASE & PRINT - 1210MM WIDE (+/- 5%)
FOR ADDITIONAL PRODUCT INFORMATION SEE PAGE 3-4 OR VISIT WWW.WOVENIMAGE.COM



TERRAIN & ORBIT

Introducing the latest in designer wallcovering that caters for the hospitality and commercial market. Terrain is a natural looking substrate product, that is made of 50% Flax and 50% polypropylene. It is supplied as a flat, semi ridged panel 2.5mm thick, in dimensions of 2800mm high by 1210mm wide to allow for ease of wall application installation. To co-ordinate with this plain-textured Terrain is printed design Orbit.

Terrain and Orbit have low volatile organic compound (VOC) emissions below the rate limit for both the Green Building Council of Australia and Green Tag. This means they could contribute towards green building rating schemes.

See page 3-4 for specifications and performance details. For more information about the products in this brochure, please contact your Woven Image® Account Manager or visit us online.

WOVENIMAGE.COM



542

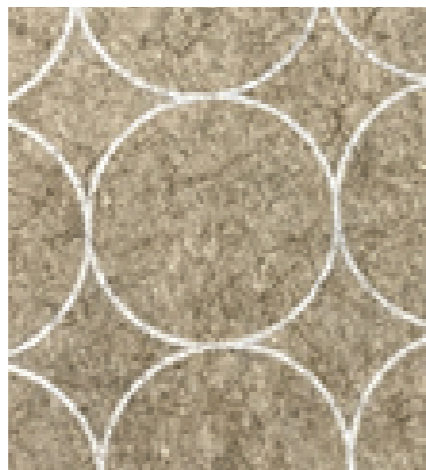


908

TERRAIN COLOURWAYS

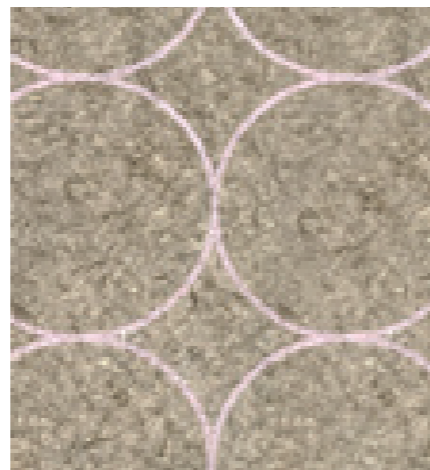


444



501

ORBIT COLOURWAYS



508



