



**GREEN
CITIES** ²⁰¹⁵

connect

MARCH 17-19 MELBOURNE

SUSTAINABLE CITIES ARE **CONNECTED** CITIES

2015 Program

**BOOK
YOUR
TICKETS
NOW!**



Principal Sponsor



green building council australia

DAY 1: TUESDAY 17 MARCH 2015

7.30am – 8.30am REGISTRATION

8.30am – 9.00am Welcome

MC Welcome: Michael Zorbas, Head of External Affairs, Lend Lease

Host City Welcome: Lord Mayor Robert Doyle

Welcome to country: Wurundjeri Tribe

Lee Joachim, Yorta Yorta Nation Aboriginal Corporation

9.00am – 10.00am SESSION 1: Larry Beasley CM Rekindling the urban love affair

Our cities are like relationships – we either love or leave. While the past dysfunctions of our cities were an inconvenience, future dysfunction will threaten their very survival. The father of the Vancouver model of new urbanism, Larry Beasley CM will explore how to build cities that not only meet the economic and environmental test, but also the ‘experiential test’.

- Larry Beasley CM, Internationally Acclaimed Urban Planner

Sponsored by:



10.00am – 10.30am MORNING TEA

10.30am – 11.15am SESSION 2: Michael Pawlyn Design inspired by nature (live from London via videolink)

Will biomimicry be one of the main design tools that drive the shift from the industrial age to the ecological age of humanity? This rapidly emerging discipline draws on a sourcebook of solutions that have benefited from a 3.8 billion year research and development period. Discover how biomimicry can be used to design better connected cities, closed loop, zero waste systems and radical reinterpretations of existing building types that achieve substantial savings in resources.

- Michael Pawlyn, Founder and Director, Exploration Architecture

11.15am – 12.15pm SESSION 3: Prof. Vivian Loftness The real deal: buildings that boost financial, natural and human capital

Understand the power of triple bottom line economics as world-renowned researcher Vivian Loftness outlines the financial, environmental and human benefits of good design choices. Our panel will explore the solutions – from the simple to the spectacular – that make investment in sustainable building a ‘no brainer’.

- Prof. Vivian Loftness, University Professor, Carnegie Mellon University
- Harvey Bernstein, Vice President, Industry Insights and Alliances, Dodge Data and Analytics (formerly McGraw Hill Construction)
- Ashak Nathwani, Honorary Associate, Lecturer, The University of Sydney

DAY 1: TUESDAY 17 MARCH 2015

12.15pm – 1.30pm LUNCH

1.30pm – 2.30pm SESSION 4: Show me the money

E-S-G. As these three letters become the short-hand for responsible investing, stakeholders are taking sustainability seriously. Hear from advisors and analysts about how they’re valuing investments and why green is the colour of money.

- Michael Salvatico, Vice President, ESG Research – Client Coverage, MSCI
- Ruben Langbroek, Head of Asia Pacific, GRESB
- Tiernan O'Rourke, Chief Financial Officer, Stockland
- Rowan Griffin, Head of Sustainability – Investment Management, Lend Lease

2.30pm – 3.30pm SESSION 5: Risks and rewards: climate-savvy insurance

Insurers are at the front line of climate change. So, what are they doing to manage climate-related risk? And what does that mean for our industry of asset builders? Hear from our expert panel as we explore the risks and rewards of climate change – and the practical measures our industry can take to weather the climate change storm.

- Rob Whelan, Executive Director & CEO, Insurance Council of Australia
- Adam Davis, Head of Climate Adaptation and Resilience, KPMG
- Anita Mitchell, General Manager Sustainability – Barangaroo South, Lend Lease

- Moderator: Prof. Katy Auty, The University of Melbourne

3.30pm – 4.00pm AFTERNOON TEA

4.00pm – 5.00pm SESSION 6: Craig Davis Humanising the workplace

We’ve been busy designing and developing buildings for people, but most of those people don’t care about their work – much less where they sit. Creative Director Craig Davis says that people aren’t failing business, business is failing them. But if our fixation on profits and productivity has dehumanised the workplace, that means the biggest productivity, creativity and innovation gains lie in reconnecting our businesses to people. What does this mean for architects, developers and managers? How do you introduce ideals, values and experiences to rehumanise buildings? Find out how people hold the key to prosperity and success.

- Craig Davis, Creative Director, Brandkarma

5.00pm CONFERENCE CLOSE

6.30pm SUNDOWN SOIRÉE – CAROUSEL, ALBERT PARK LAKE, MELBOURNE

PRESENTED BY



SUNDOWN *Soirée*

TUESDAY 17 MARCH 2015
6:30PM - 10:30PM

CAROUSEL - ALBERT PARK LAKE
MELBOURNE

Enjoy great food, drinks and conversation while
you take in the view of Albert Park Lake and
the Melbourne city skyline

MEMBERS \$200 NON MEMBERS \$300

REGISTER NOW

www.greencities.org.au

DAY 2: WEDNESDAY 18 MARCH 2015

7.30am – 8.45am WOMEN'S LEADERSHIP BREAKFAST

Achieving sustainability requires collective action. Join us at the Green Cities 'Women's Leadership Breakfast', sponsored by COFELY Australia, as we explore how to connect different generations, groups and genders to embed a culture of sustainability in the property industry. This event features a line-up of the industry's leaders – both male and female – who are working together to drive sustainability to the top of everyone's agenda.

- Prof. Vivian Loftness, Carnegie Mellon University
- Michael Cameron, CEO and Managing Director, The GPT Group
- Additional speaker – to be announced soon
- Moderator – Kathy MacDermott, Chief Operating Officer, Property Council of Australia

Sponsored by:



8.30am – 9.00am REGISTRATION

9.10am – 9.50am SESSION 1: New faces in old places

The success of New York's High Line park is inspiring cities around the world to reimagine their existing landscapes and architecture. As Australia's cities grow, how can reactivation turn the down-at-heel into downright delightful? Led by the man who has helped Melbourne become the world's most liveable city, our panel will explore how we reinvent old spaces to create enduring and extraordinary places for people.

PANEL SESSION:

- Prof. Rob Adams AM, Director City Design, City of Melbourne
- More speakers to be announced.
- Moderator: Robin Mellon, Chief Operating Officer, GBCA

9.50am – 10.30am SESSION 2: Creative change in uncertain times

While economic uncertainty can breed caution, it can also be a catalyst for creativity. Leaders in change strategy will unpack the ideas, innovations and approaches to implementing change that can help business conquer its fears.

PANEL SESSION:

- Jillian Broadbent AO, Chair, Clean Energy Finance Corporation
- Holly Ransom, 2014 G20 Youth Summit Chair and Challenge Strategist
- Moderator: Anna Skarbek, Executive Director, Climate Works Australia

10.30am – 11.15am LUMINARIES MORNING TEA – Larry Beasley CM

DAY 2: WEDNESDAY 18 MARCH 2015

11.15am – 12.45pm SESSION 3A:

Belonging: People and place

1. **Places for people: The human experience, connecting people to places through world class public realm** – Kate Brown, Group Sustainability Director, Grosvenor
2. **Re-engage with nature or die trying: How our poor relationship with nature is killing us and the environment** – Shea Hatch, Landscape Architect, Fit Landscape
3. **Social capital and our cities** – Lauren Kajewski, National Social Planning & Infrastructure Manager, Stockland
4. **Biophilic and living cities** – Amanda Sturgeon, Executive Director, International Living Future Institute
5. **Thriving in a new world of work** – Brad Krauskopf, CEO and Founder, Third Spaces
6. **Engaging staff to make a difference** – Antonia Reynolds, Corporate Sustainability Manager, Frasers Australand
7. **Serious play in the city** – Sue Wittenoom, Director, Strategy+, AECOM
8. **Ideas can change the world: Shaping Wollongong** – Sunny Haynes, Partner, Hello City

12.45pm – 1.45pm SESSION 4A:

Upgrade for uplift: Retrofitting our cities

1. **The urban housing challenge: London density, Sydney quality, Shanghai speed** – David Tickle, Urban Design Sector Leader, HASSELL
2. **Green infrastructure: The network of the future** – Bernadette May, Moreton Bay Regional Council
3. **The goods line** – Sacha Coles, Director, ASPECT Studios
4. **Reimagining the city, one roof and wall at a time** – Gail Hall, Coordinator Green Infrastructure, City of Melbourne
5. **The challenge of an existing building** – Ian Van Eerden, Sustainability Consultant, Norman Disney & Young
6. **50 Martin Place: Retrofitting Heritage** – Andrew Pettifer, Principal, Arup
7. **The future of live, work, play space at Tonsley** – Matthew Waltho, Sustainability Manager, Renewal SA

11.15am – 12.45pm SESSION 3B:

Robust and resilient cities

1. **Where are all the trees? A first-of-its-kind look at Australia's tree canopy cover** – Brent Jacobs, Director of Research, University of Technology Sydney, Institute of Sustainable Futures
2. **Our outdoor rooms: The absorptive city** – David Holm, Architect Director, Cox Architecture
3. **The resilience program: Insurable or not?** – Tom Davies, Director, Edge Environment
4. **Will a failure to consider climate change result in project failure?** – Mark Baker-Jones, Special Counsel, DLA Piper
5. **You can't do that here! Place management, the challenges that lie ahead** – Stuart Heseltine, Principal, Hemisphere Design
6. **Cents and sensibilities: The mainstream move to sustainable housing** – Nina James, Sustainability Manager, Investa Land
7. **Supply chain: Asking the right questions and spotting the good answers** – Nathan Robertson-Ball, Consultant, Banarra
8. **Carbon Neutral: Do it with meaning** – Digby Hall, Sustainability Leader, Aurecon

12.45pm – 1.45pm SESSION 4B:

Innovation in action

1. **The passive house challenge: What makes it difficult to build a Passive House?** – Christoph Begert, Senior Consultant Engineering, Jacobs Engineering
2. **The ecovillage at Currumbine: A constructively critical year 10 milestone appraisal** – Ben O'Callaghan, Sustainability Consultant, Ecomplish Consulting
3. **Can you lead a horse to water AND make it drink?** – Laura Crawford, Senior ESD Consultant, WSP Group
4. **Living stations** – Campbell Rose, Chief Executive, VicTrack
5. **Library at the Dock: Australia's most sustainable public building** – Claire Johnston, Project Director, Victoria Harbour, Lend Lease
6. **Lightweight, affordable and green** – Paolo Bevilacqua, National Sustainability Manager & Kase Jong, Estimating Manager, Frasers Australand
7. **Designed for healing: The gardens of the Lady Cilento Children's Hospital** – Katharina Nieberler-Walker, Senior Associate, Conrad Gargett Riddel Ancher Mortlock Woolley

DAY 2: WEDNESDAY 18 MARCH 2015

3.15pm – 3.45pm AFTERNOON TEA

3.45pm – 4.30pm SESSION 5:

Connecting the places in between

A city is more than a collection of buildings. In this session, we take the buildings out of the equation and talk about what's left behind – the natural beauty and man-made infrastructure, the parks and public space, the art and soul that makes a city unique.

PANEL SESSION:

- Kylie Legge, Director, Place Partners
- Chris White, Executive Director Facilities & Sustainability, The University of Melbourne
- More speakers to be announced soon

4.30pm – 5.00pm WEAPONS OF MASS CREATION

From the avant-garde to the amazing, learn the latest and greatest technologies and techniques in the Green Cities 2015 Weapons of Mass Creation showcase.

Five finalists to be showcased. People's Choice and Judge's Choice awarded.

Sponsored by:



4.50pm – 5.00pm THE WRAP

The chiefs of the GBCA and Property Council, Romilly Madew and Ken Morrison, are joined by Lend Lease's Group Head of Sustainability, Geoff Dutailis, for a lively look back on the conference highlights and a dissection of ideas that inspire.

- Romilly Madew, Chief Executive, GBCA
- Ken Morrison, Chief Executive, Property Council of Australia
- Geoff Dutailis, Group Head of Sustainability, Lend Lease

5.00pm CONFERENCE CLOSE

5.30pm THE WRAP DRINKS – THE EMERALD PEACOCK

DAY 3: THURSDAY 19 MARCH 2015

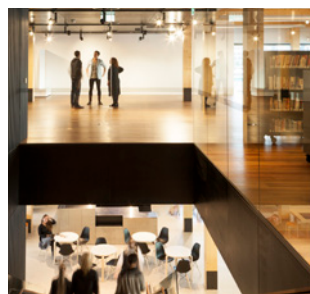
Green Star site tours



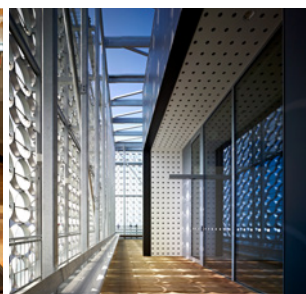
The University of Melbourne, Faculty of Architecture, Building and Planning Development



Forte



Library at The Dock



RMIT Design Hub



115 Batman Street

Masterclasses

Half day: 9:00am – 12:30pm

Conscious Capitalism

Craig Davis,
Founder and Director, Brandkarma

Half day: 9:00am – 12:30pm

High-Performance Buildings

Prof. Vivian Loftness,
Carnegie Mellon University

Full day: 9:00am – 4:00pm

Urban Design & Placemaking

Larry Beasley CM, internationally acclaimed Urban Planner
Kylie Legge. Director, Place Partners

REGISTRATION PRICING

Ticket Options	Early Bird*	Member	Non-member
2-day full conference (includes Sundown Soirée)	\$1800	\$1999	\$2350
2-day full conference Group 3+	\$1599	\$1599	\$2050
2-day full conference Rising Leaders (under 30/student)		\$999	(not applicable)
Day 1 ticket (includes Sundown Soirée)		\$1240	\$1550
Day 2 ticket (excludes Sundown Soirée)		\$1240	\$1550
Day 2 ticket + (one ticket to Sundown Soirée)		\$1440	\$1855
Sundown Soirée		\$200**	\$300
Green Star site tours		\$65	\$95
Masterclasses: full day		\$670	\$1000
Masterclasses: half day		\$365	\$490
Women's Leadership Breakfast		\$95	\$155
Women's Leadership Breakfast Table of 10		\$850	\$1500

*Early bird pricing available til 19 December 2014. Available to members of the Property Council of Australia or GBCA.

**Members may purchase tickets at the member rate for non-member guests/partners

WITH THANKS TO OUR SPONSORS

Principal sponsor



Leading sponsor



Associate sponsors



Become a sponsor

For Green Cities 2015 sponsorship enquiries, contact Rosie Campo;

P: [02 9033 1939](tel:0290331939)

E: rcampo@propertyoz.com.au

Connect with us



Principal Sponsor

