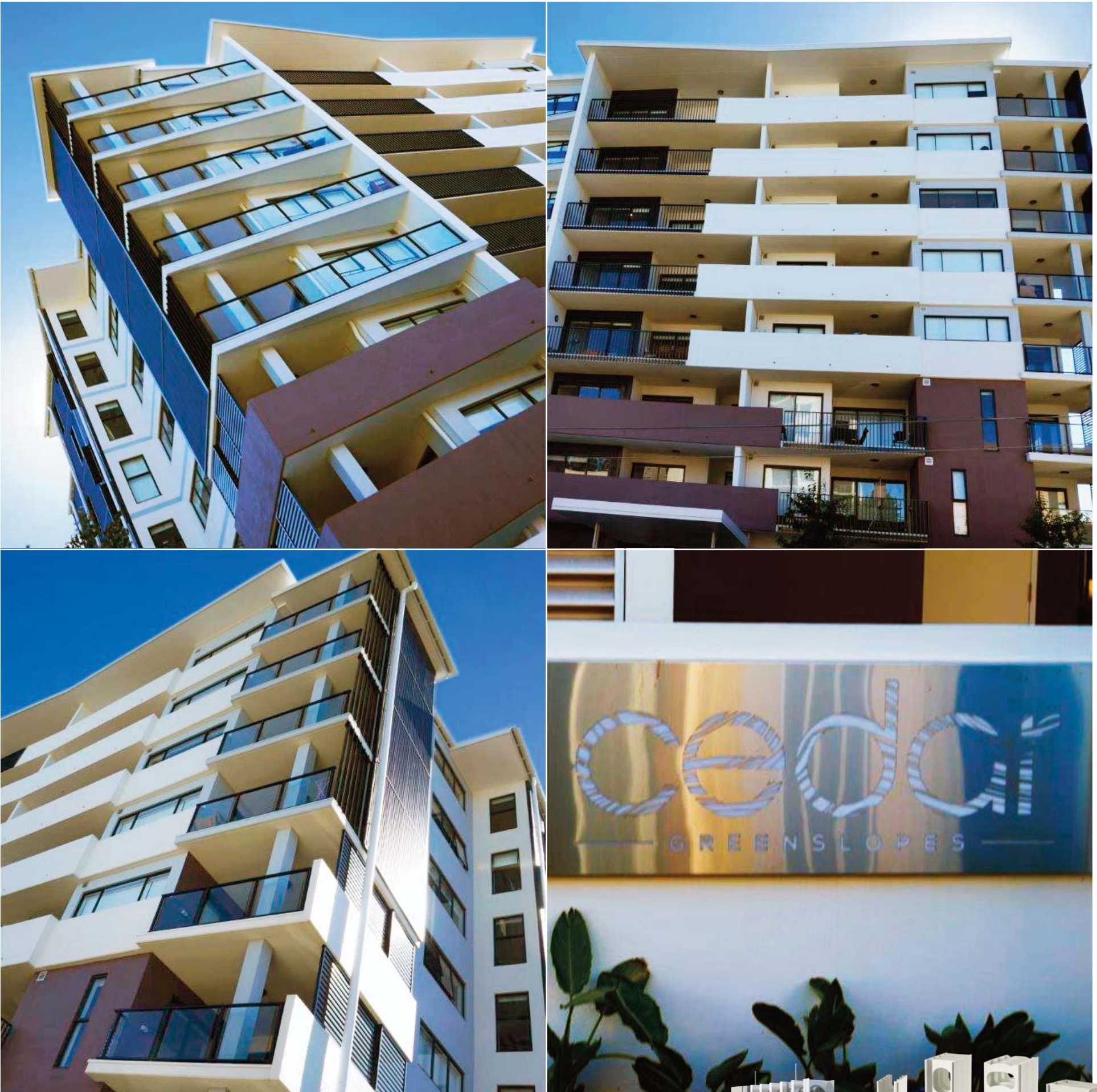


project power

walling built better



blockwork too big a road-block

9–15 Regina Street, Greenslopes QLD



afs logicwall®

afs rediwall®

Open-door approach to better walls

Central to the RGD Group's success is a continual re-evaluation of the processes, methods and building materials it uses. Greenslopes showed just how beneficial this improvement-ethos can be with them opting for AFS permanent formwork over time-consuming conventional walling.

Our customer says...

afs systems made a tight site workable

We chose the afs logicwall® and afs rediwall® systems for their load bearing structural capacity and the efficiencies they could bring to a tight site like Regina Street, Greenslopes.

Being a shop-drawn system, logicwall® arrived on site needing just one semi per floor. If we'd used block, sand and cement it might have been four deliveries and interrupted traffic control significantly. Additionally, our crane was freed up as AFS systems are not crane dependant and can be installed manually. The AFS team gave us the complete package and we look forward to future projects with them. **Joe Alderton, Site Manager, RGD Constructions**

For smarter, faster, better projects call **1300 727 237** or visit **afsformwork.com.au**



61 apartments	7 storeys
3 level car park	1,224m ² logicwall®

afs rediwall® application

- basement retaining walls
- lift & stair cores
- blade walls