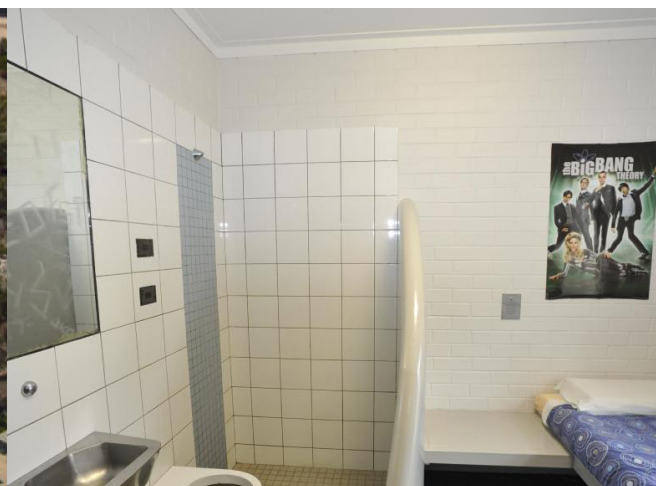


Banksia Hill Juvenile Detention Centre



Project Description:

The expansion of Banksia Hill Detention Centre was required to accommodate juvenile detainees being moved out of the Rangeview Remand Centre which would then be converted into the Wandoo Young Adult Correctional Facility. With the conversion of Rangeview, Banksia Hill would become the sole juvenile detention facility in Western Australia.

The Challenge:

Due to the nature of the project there were significant risks and tight deadlines. The challenge for our team was to improve the control of water usage within the facility while ensuring all products could withstand the risk of vandalism and being used for self-harm.

The Solutions:

Galvin Engineering were chosen for their extensive experience fitting out correctional facilities. Not only were they a local manufacturer that could provide quick lead times but they had the ability to provide flexible product solutions.

Location:	Canning Vale, West Australia
Client:	Department of Correctional Services
Hydraulic Consultant:	Sinclair Knight Mertz
Plumbing Contractor:	Ardent Plumbing
Duration:	2010 to 2014

The Results:

Galvin Engineering provided vandal resistant, anti-ligature-water solutions that were able to withstand the volatile environment within a correctional facility. Additionally, improved control of the water usage was an important part of this project.