



*We set the standard*



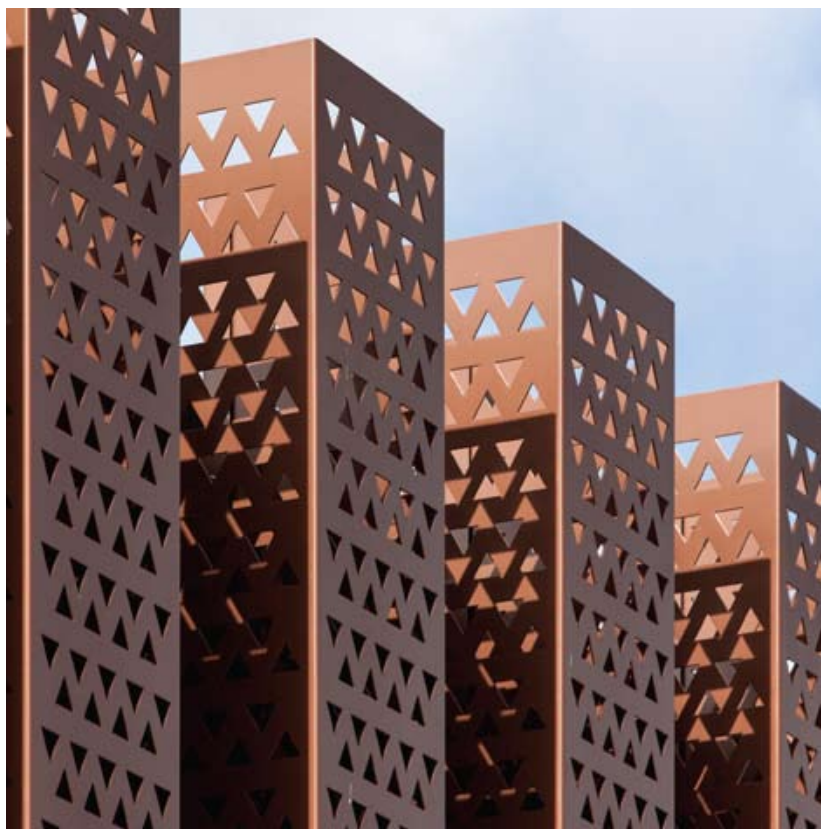
A valmont  COMPANY

|    |                |
|----|----------------|
| 2  | PERFORATED     |
| 11 | DRAGONSCALE    |
| 13 | WIRE           |
| 19 | EXPANDED       |
| 23 | TRANSIT        |
| 27 | ATMOSPHERE     |
| 31 | PIC PERF       |
| 39 | PROFILES       |
| 62 | FIXING SYSTEMS |



PERFORATED





PERFORATED

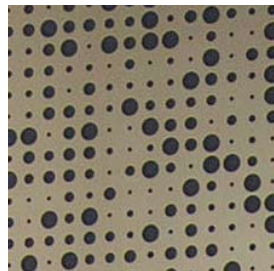
WINNING APPLIANCES STORE

BUILDER: SUNSET SIGNS

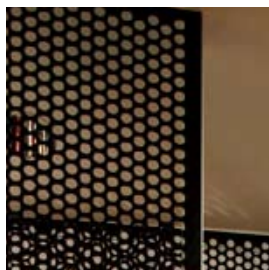
ANODISED CHAMPAGNE



PERFORATED



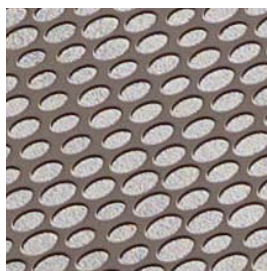




PERFORATED



PERFORATED





PERFORATED & PIC PERF

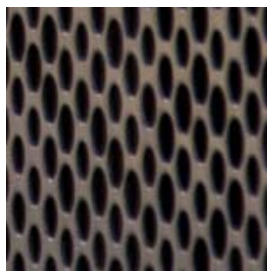


A valmont COMPANY





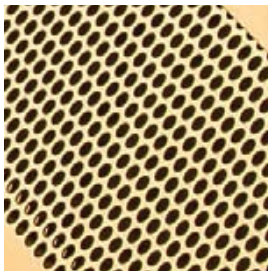
PERFORATED



TCA COMMUTER CAR PARK

BATES SMART

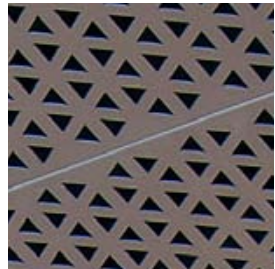
ANODISED ALUMINIUM PERFORATED



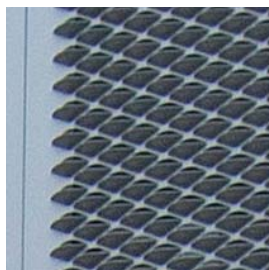
PERFORATED



## PERFORATED







DRAGONSACLE



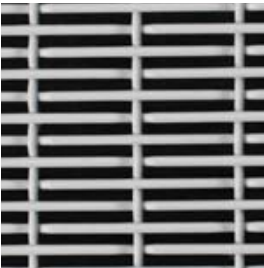
A valmont COMPANY



DRAGONS SCALE







WIRE



WIRE





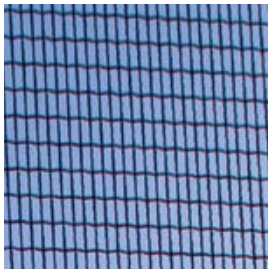
WIRE



WIRE

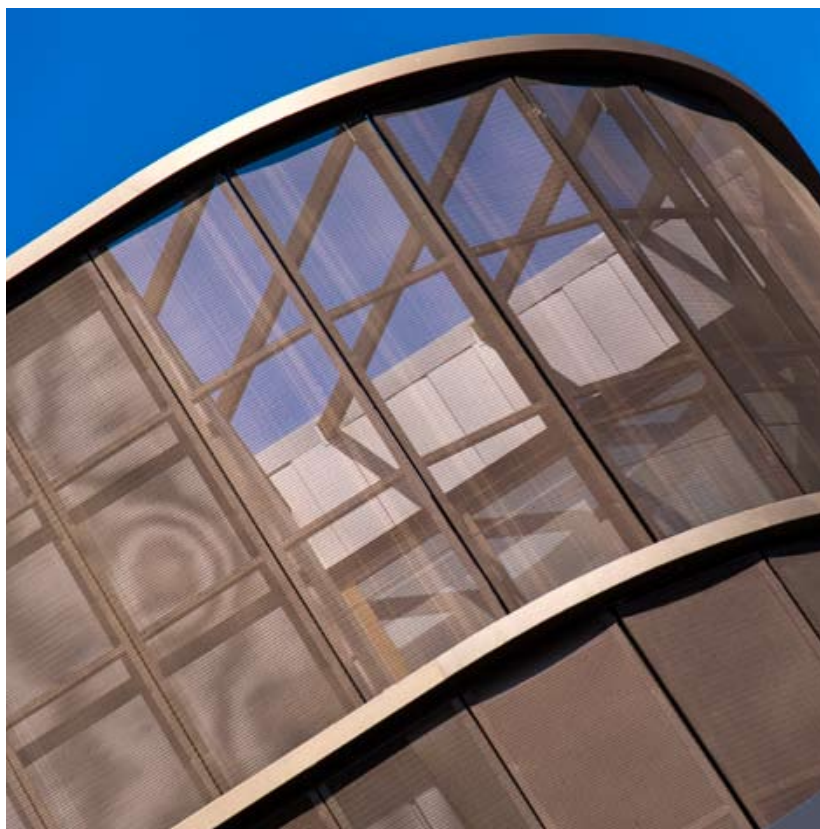






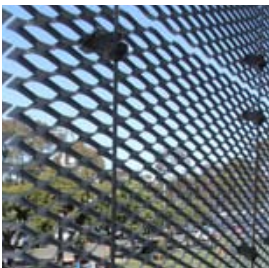
WIRE





WIRE

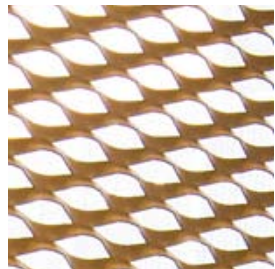


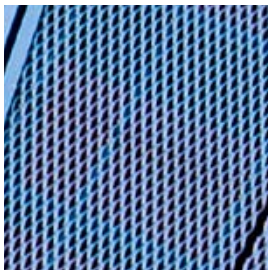


EXPANDED



EXPANDED



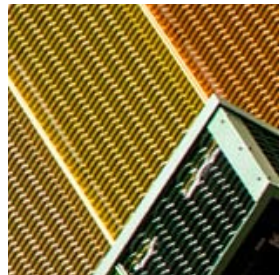


EXPANDED

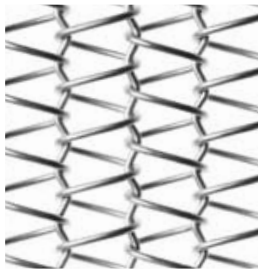




EXPANDED







TRANSIT

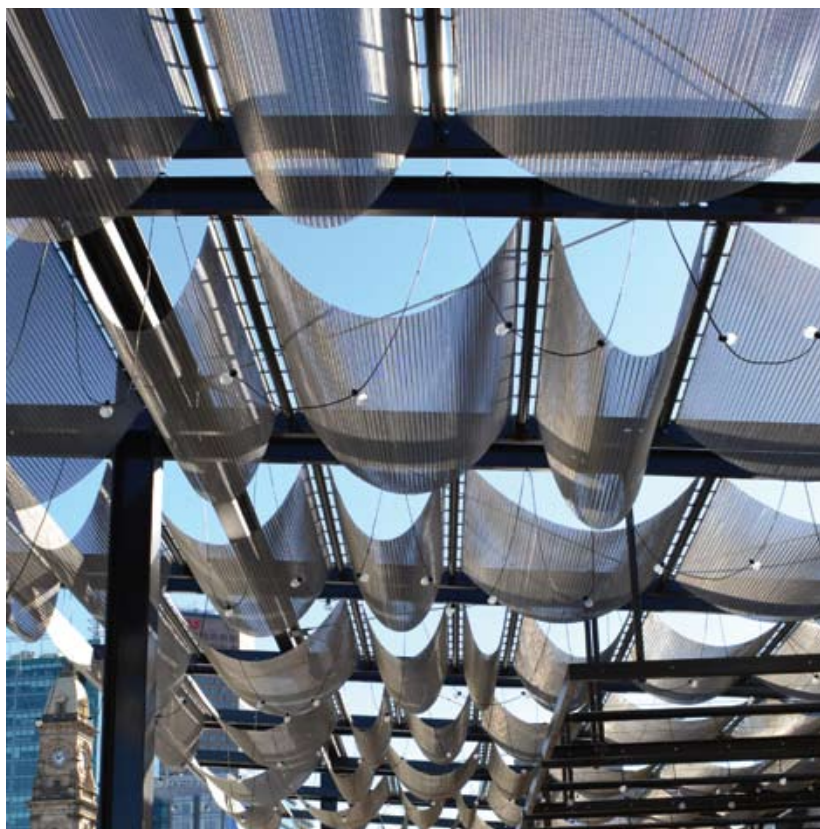
**LOCKER**

A valmont COMPANY

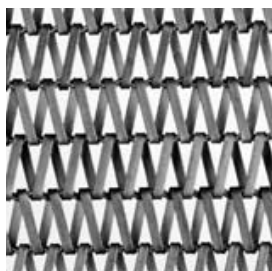
VICTORIA SQUARE, SA

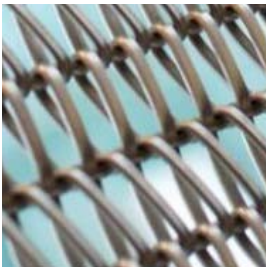
TAYLOR CULLITY LETHLEAN

TRANSIT F281



TRANSIT





TRANSIT

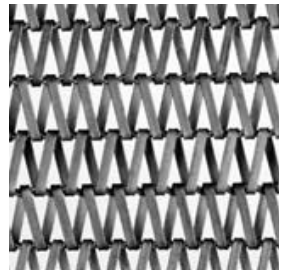
**LOCKER**

A valmont COMPANY





TRANSIT

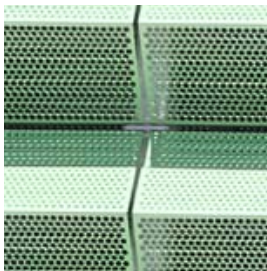




ROCKHAMPTON HOSPITAL, QLD

BUILDER: HANSEN YUNCKEN

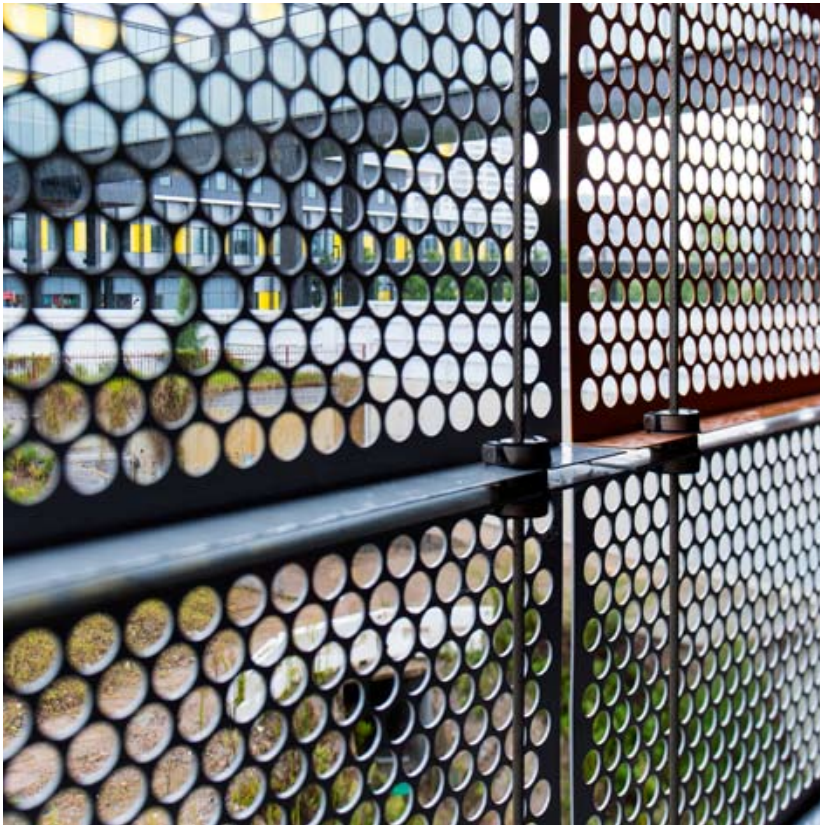
ATMOSPHERE FX



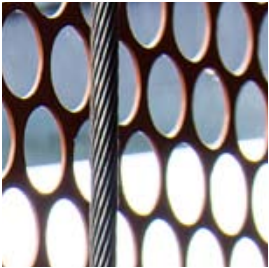
ATMOSPHERE

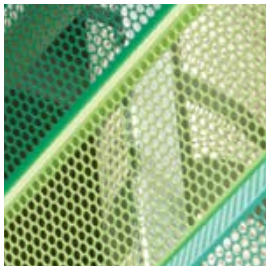
**LOCKER**

A valmont COMPANY



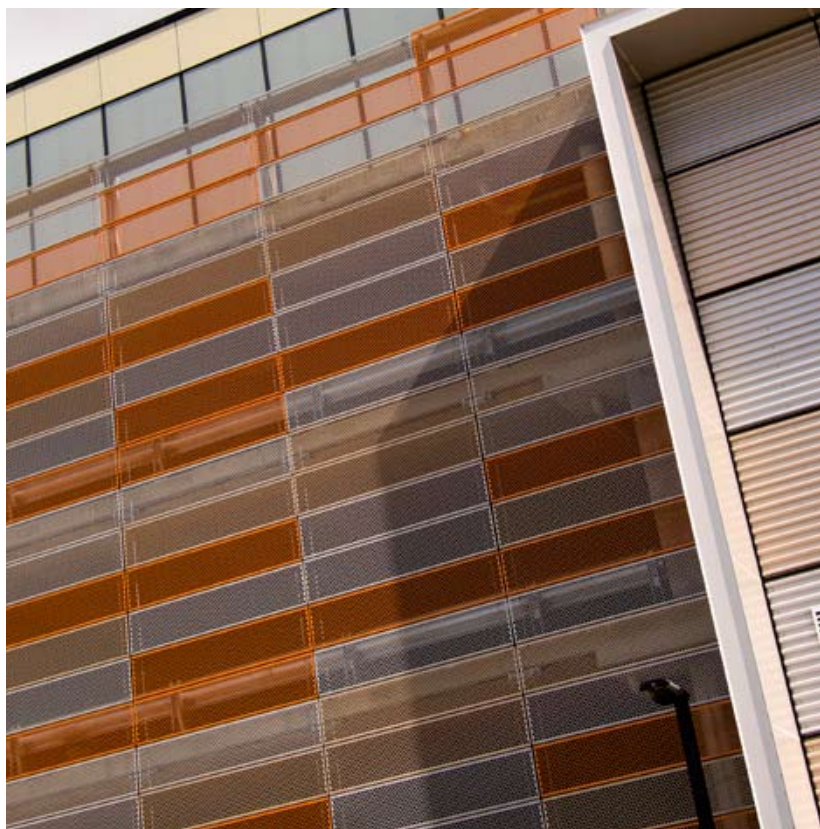
ATMOSPHERE



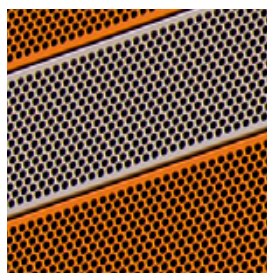


ATMOSPHERE

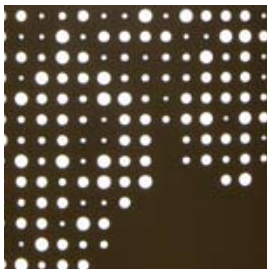




ATMOSPHERE







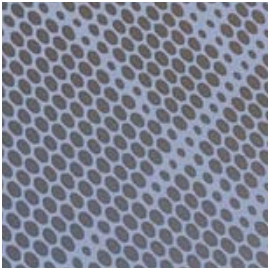
PIC PERF

**LOCKER**

A valmont COMPANY



PIC PERF





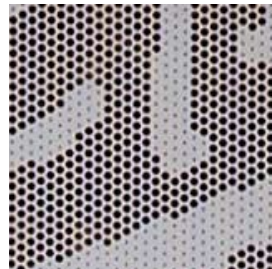
PIC PERF

**LOCKER**

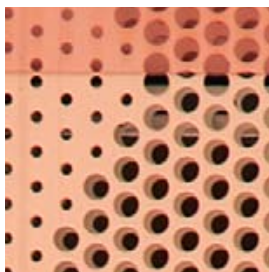
A valmont COMPANY



PIC PERF







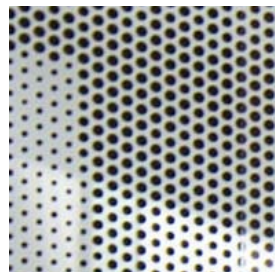
PIC PERF

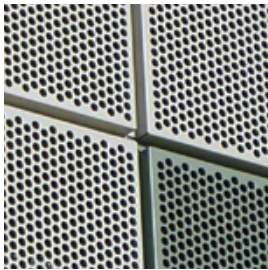
**LOCKER**

A valmont COMPANY



PIC PERF





PIC PERF

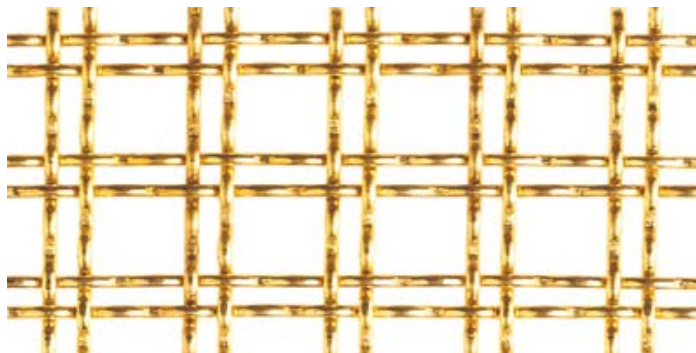


PIC PERF





## ANTIQUITA II



|              |                           |
|--------------|---------------------------|
| MATERIAL     | BRASS                     |
| WIDTH        | 2400                      |
| WEIGHT       | 2.99 (KG/M <sup>2</sup> ) |
| OPEN AREA    | 55%                       |
| STOCK STATUS | EX STOCK AND CUSTOM MADE  |

## BOSTON 705



|              |   |
|--------------|---|
| MATERIAL     | T316 (S/S), T304 (S/S), GALVANISED, ALUMINIUM |
| WIDTH        | 2400  |
| WEIGHT       | 6.2 (KG/M <sup>2</sup> )                      |
| OPEN AREA    | 72%   |
| STOCK STATUS | EX STOCK AND CUSTOM MADE                      |

**LOCKER**

A valmont COMPANY

\* Images are not to scale

## BOSTON 311



|              |   |
|--------------|---|
| MATERIAL     | T304 (S/S), T316 (S/S), GALVANISED, ALUMINIUM |
| WIDTH        | 2400  |
| WEIGHT       | 8.15 (KG/M <sup>2</sup> )                     |
| OPEN AREA    | 63%   |
| STOCK STATUS | EX STOCK AND CUSTOM MADE                      |

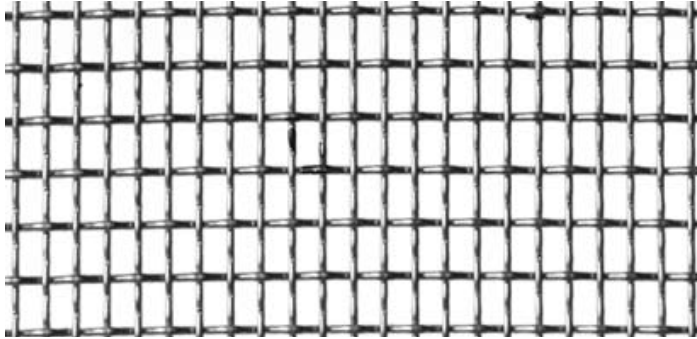
## CIVIC 520



|              |                          |
|--------------|--------------------------|
| MATERIAL     | T316 (S/S), GALVANISED   |
| WIDTH        | 2400                     |
| WEIGHT       | 6.0 (KG/M <sup>2</sup> ) |
| OPEN AREA    | 72%                      |
| STOCK STATUS | CUSTOM MADE              |

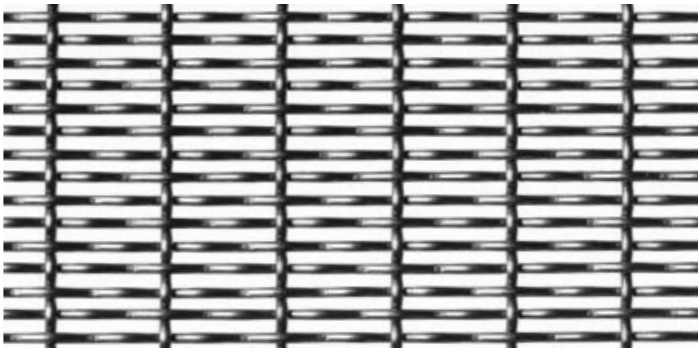
\* Images are not to scale

## IKON 111



|              |                          |
|--------------|--------------------------|
| MATERIAL     | T316 (S/S)               |
| WIDTH        | 2400                     |
| WEIGHT       | 3.5 (KG/M <sup>2</sup> ) |
| OPEN AREA    | 58%                      |
| STOCK STATUS | CUSTOM MADE              |

## IKON 141



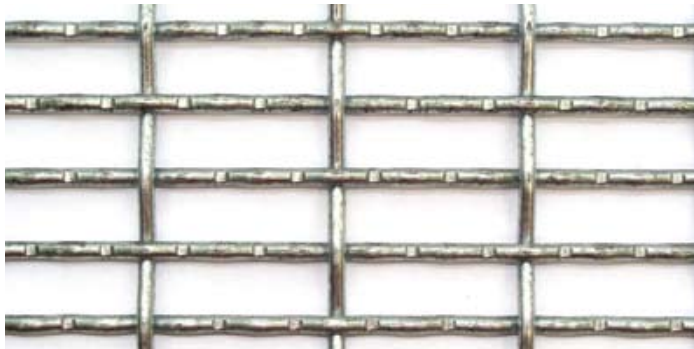
|              |                           |
|--------------|---------------------------|
| MATERIAL     | T316 (S/S)                |
| WIDTH        | 2400                      |
| WEIGHT       | 4.85 (KG/M <sup>2</sup> ) |
| OPEN AREA    | 45%                       |
| STOCK STATUS | CUSTOM MADE               |

## IKON 205



|              |                                    |
|--------------|------------------------------------|
| MATERIAL     | T304 (S/S), T316 (S/S), GALVANISED |
| WIDTH        | 2400                               |
| WEIGHT       | 6.1 (KG/M <sup>2</sup> )           |
| OPEN AREA    | 69%                                |
| STOCK STATUS | CUSTOM MADE                        |

## IKON 511

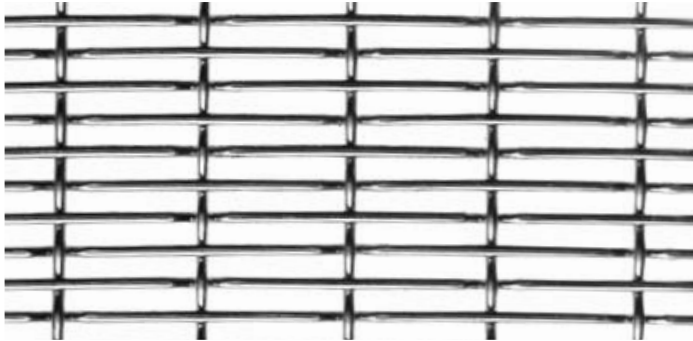


|              |                                    |
|--------------|------------------------------------|
| MATERIAL     | T304 (S/S), T316 (S/S), GALVANISED |
| WIDTH        | 1500                               |
| WEIGHT       | 7.4 (KG/M <sup>2</sup> )           |
| OPEN AREA    | 69%                                |
| STOCK STATUS | EX STOCK AND CUSTOM MADE           |

\* Images are not to scale



## PLANAR 441



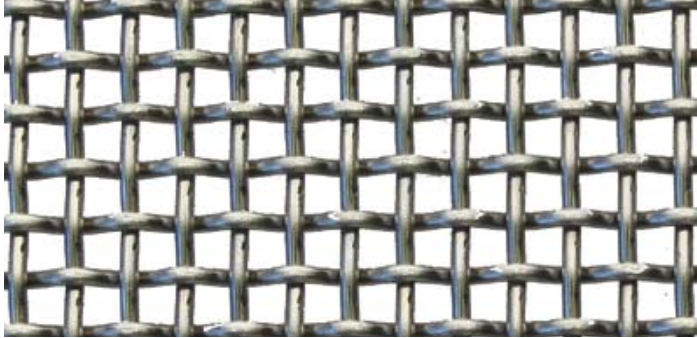
|              |                           |
|--------------|---------------------------|
| MATERIAL     | T316 (S/S), ALUMINIUM     |
| WIDTH        | 2400                      |
| WEIGHT       | 6.45 (KG/M <sup>2</sup> ) |
| OPEN AREA    | 53%                       |
| STOCK STATUS | EX STOCK AND CUSTOM MADE  |

## QUAD 306



|              |                          |
|--------------|--------------------------|
| MATERIAL     | T316 (S/S), BRASS        |
| WIDTH        | 2400                     |
| WEIGHT       | 7.1 (KG/M <sup>2</sup> ) |
| OPEN AREA    | 38%                      |
| STOCK STATUS | CUSTOM MADE              |

## WEAVE 1020



|              |                           |
|--------------|---------------------------|
| MATERIAL     | T304 (S/S)                |
| WIDTH        | 1525                      |
| WEIGHT       | 4.11 (KG/M <sup>2</sup> ) |
| OPEN AREA    | 41%                       |
| STOCK STATUS | Ex Stock                  |

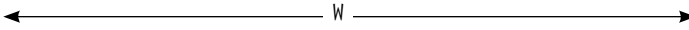
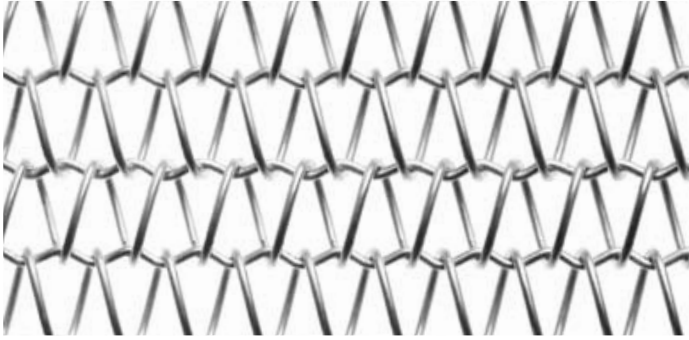
## TRANSIT 091



|              |                           |
|--------------|---------------------------|
| MATERIAL     | T316 (S/S)                |
| WIDTH        | 3000                      |
| WEIGHT       | 2.64 (KG/M <sup>2</sup> ) |
| OPEN AREA    | 76%                       |
| STOCK STATUS | CUSTOM MADE               |

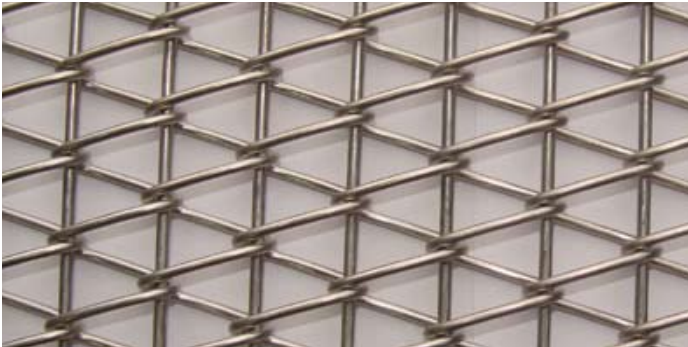
\* Images are not to scale

## TRANSIT 210



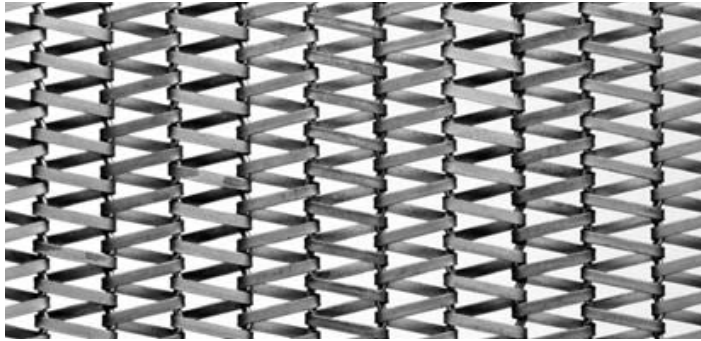
|              |                                       |
|--------------|---------------------------------------|
| MATERIAL     | T316 (S/S), MILD STEEL PAINTED, BRASS |
| WIDTH        | 5000                                  |
| WEIGHT       | 4.56 (KG/M <sup>2</sup> )             |
| OPEN AREA    | 56%                                   |
| STOCK STATUS | CUSTOM MADE                           |

## TRANSIT 223RR



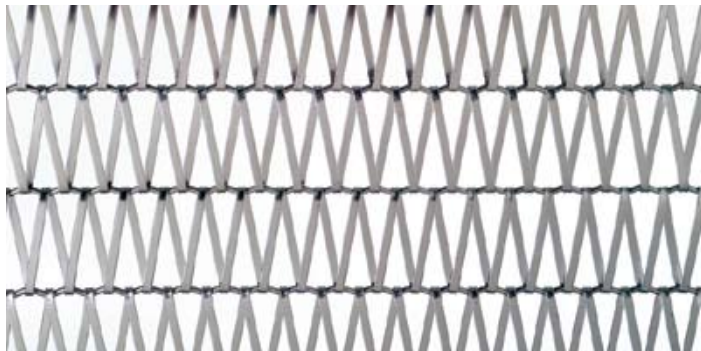
|              |                           |
|--------------|---------------------------|
| MATERIAL     | T316 (S/S)                |
| WIDTH        | 4000                      |
| WEIGHT       | 10.8 (KG/M <sup>2</sup> ) |
| STOCK STATUS | CUSTOM MADE               |

## TRANSIT F281



|              |                               |
|--------------|-------------------------------|
| MATERIAL     | T316(S/S), MILD STEEL PAINTED |
| WIDTH        | 3000                          |
| WEIGHT       | 8.6 (Kg/M <sup>2</sup> )      |
| OPEN AREA    | 30%                           |
| STOCK STATUS | CUSTOM MADE                   |

## TRANSIT F360

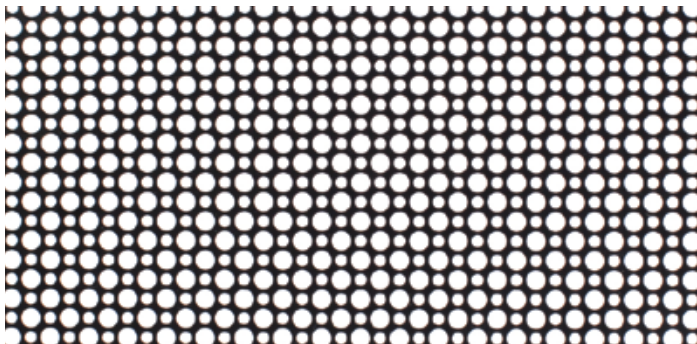


|              |                           |
|--------------|---------------------------|
| MATERIAL     | T316 (S/S)                |
| WIDTH        | 5000                      |
| WEIGHT       | 10.8 (Kg/M <sup>2</sup> ) |
| OPEN AREA    | 61%                       |
| STOCK STATUS | CUSTOM MADE               |

\* Images are not to scale



## MOROCCO



|              |             |
|--------------|-------------|
| MATERIAL     | ALUMINIUM   |
| MAX WIDTH    | 1500        |
| OPEN AREA    | 51%         |
| THICKNESS    | 3MM         |
| STOCK STATUS | CUSTOM MADE |

## CHAMPAGNE



|              |                                    |
|--------------|------------------------------------|
| MATERIAL     | ALUMINIUM                          |
| MAX WIDTH    | 1500                               |
| OPEN AREA    | 22%                                |
| THICKNESS    | 1.6MM, 2.0MM, 3.0MM, 4.0MM & 5.0MM |
| STOCK STATUS | EX STOCK - 3.0MM AND CUSTOM MADE   |

**LOCKER**

A valmont COMPANY

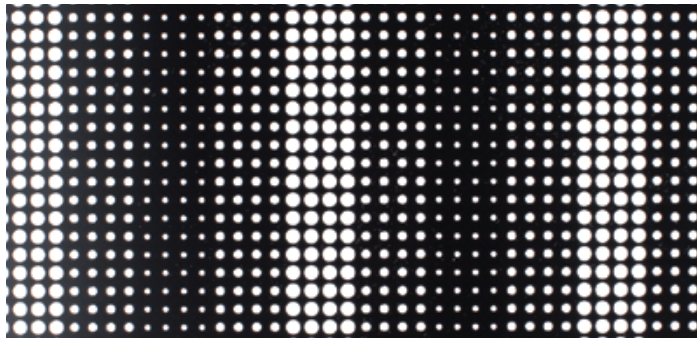
\* Images are not to scale

## ODYSSEY



|              |                      |
|--------------|----------------------|
| MATERIAL     | ALUMINIUM            |
| MAX WIDTH    | 1400                 |
| OPEN AREA    | 50%                  |
| THICKNESS    | 1.0MM, 1.2MM & 1.6MM |
| STOCK STATUS | CUSTOM MADE          |

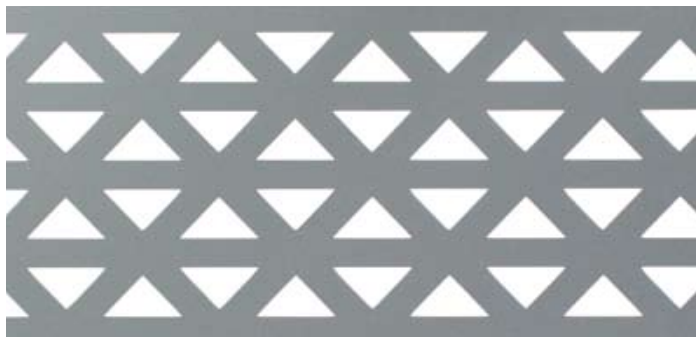
## DOMINO 358



|              |           |
|--------------|-----------|
| MATERIAL     | ALUMINIUM |
| MAX WIDTH    | 1500      |
| OPEN AREA    | 25%       |
| THICKNESS    | 3MM       |
| STOCK STATUS | EX STOCK  |

\* Images are not to scale

## AZTEC



|              |           |
|--------------|-----------|
| MATERIAL     | ALUMINIUM |
| MAX WIDTH    | 1500      |
| OPEN AREA    | 28%       |
| THICKNESS    | 3.0MM     |
| STOCK STATUS | EX STOCK  |

## SHEER 2800

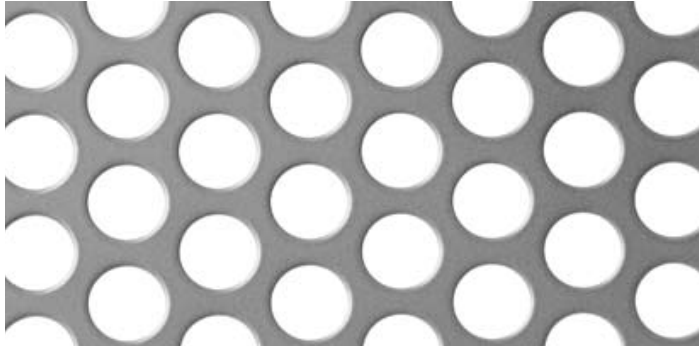


|              |                                  |
|--------------|----------------------------------|
| MATERIAL     | STEEL, ALUMINIUM                 |
| MAX WIDTH    | 1200                             |
| OPEN AREA    | 73%                              |
| THICKNESS    | 3.0MM (A)                        |
| WEIGHT       | 4.24 (KG/M2) (S) 2.2 (KG/M2) (A) |
| STOCK STATUS | CUSTOM MADE                      |



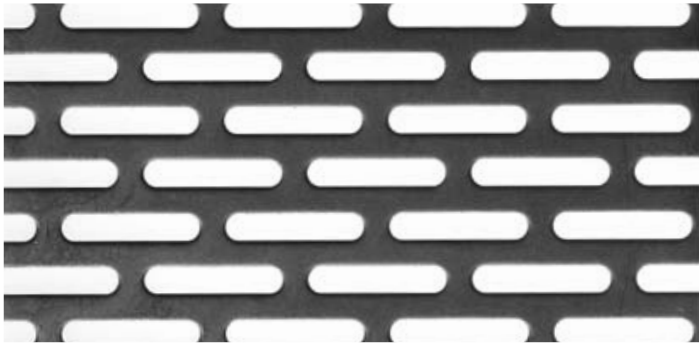
A valmont COMPANY

## TITAN 120



|              |                                   |
|--------------|-----------------------------------|
| MATERIAL     | ALUMINIUM, T304 (S/S), T316 (S/S) |
| MAX WIDTH    | 1500                              |
| OPEN AREA    | 49%                               |
| THICKNESS    | 1.6-10.0MM (A) 0.9 -6.0MM (S/S)   |
| STOCK STATUS | CUSTOM MADE                       |

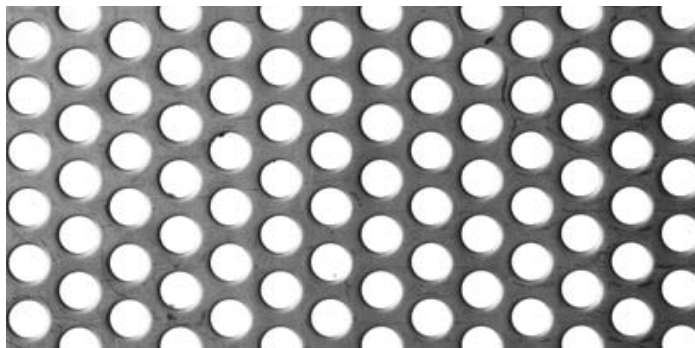
## NICHE 250



|              |                                   |
|--------------|-----------------------------------|
| MATERIAL     | ALUMINIUM, T304 (S/S), T316 (S/S) |
| MAX WIDTH    | 1500                              |
| OPEN AREA    | 40%                               |
| THICKNESS    | 1.2-5.0MM (A) 1.2-2.5MM (S/S)     |
| STOCK STATUS | EX STOCK AND CUSTOM MADE          |

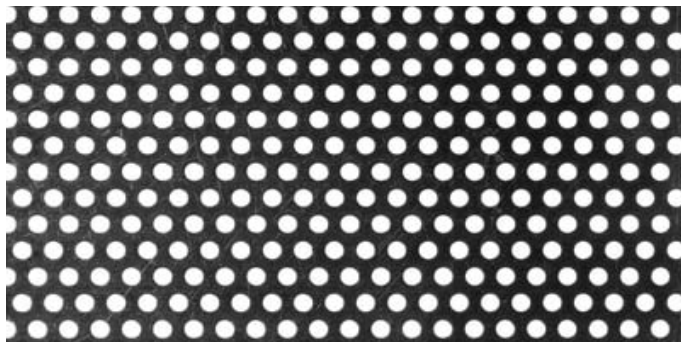


## ECLIPSE 600



|              |                                   |
|--------------|-----------------------------------|
| MATERIAL     | ALUMINIUM, T304 (S/S), T316 (S/S) |
| MAX WIDTH    | 1500                              |
| OPEN AREA    | 40%                               |
| THICKNESS    | 1.2 - 6.0MM (A) 0.9 - 4.0MM (S/S) |
| STOCK STATUS | EX STOCK AND CUSTOM MADE          |

## APOLLO 300

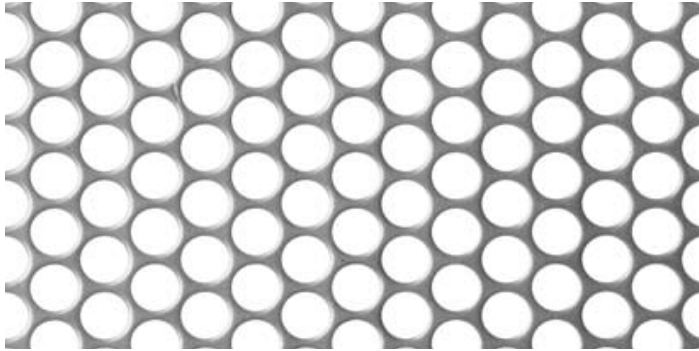


|              |                                  |
|--------------|----------------------------------|
| MATERIAL     | ALUMINIUM T304 (S/S), T316 (S/S) |
| MAX WIDTH    | 1500                             |
| OPEN AREA    | 30%                              |
| THICKNESS    | 1.0 -3.0MM (A) 0.5-1.5MM (S/S)   |
| STOCK STATUS | CUSTOM MADE                      |



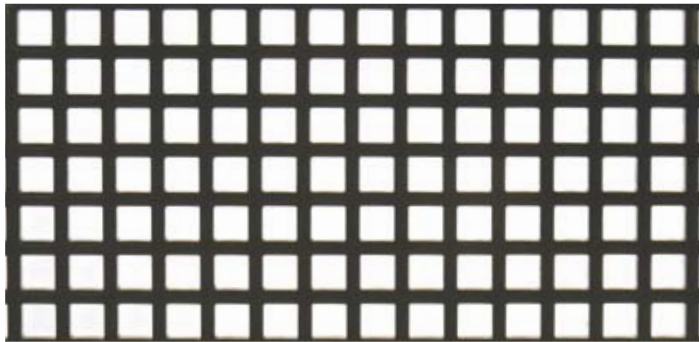
A valmont COMPANY

## CLARITY 800



|              |                                   |
|--------------|-----------------------------------|
| MATERIAL     | ALUMINIUM, T304 (S/S), T316 (S/S) |
| MAX WIDTH    | 1500                              |
| OPEN AREA    | 62%                               |
| THICKNESS    | 1.0 -3.0MM (A) 0.5-1.5MM (S/S)    |
| STOCK STATUS | CUSTOM MADE                       |

## FORTE 800



|              |   |
|--------------|---|
| MATERIAL     | T316 (S/S), STEEL, ALUMINIUM                    |
| MAX WIDTH    | 1200  |
| OPEN AREA    | 53%   |
| THICKNESS    | 1.0-2.0MM (S), 0.9 -1.5 (S/S),<br>1.0-3.0MM (A) |
| STOCK STATUS | CUSTOM MADE                                     |

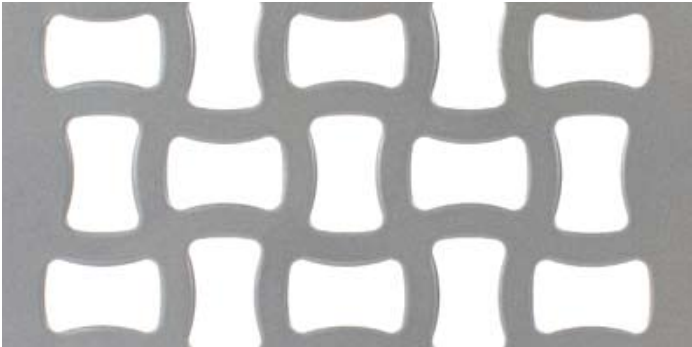
\* Images are not to scale

## AERO



|              |                          |
|--------------|--------------------------|
| MATERIAL     | ALUMINIUM                |
| MAX WIDTH    | 1500                     |
| OPEN AREA    | 56%                      |
| THICKNESS    | 3.0, 4.0, 5.0MM          |
| STOCK STATUS | EX STOCK AND CUSTOM MADE |

## RIBBON



|              |                          |
|--------------|--------------------------|
| MATERIAL     | ALUMINIUM                |
| MAX WIDTH    | 1500                     |
| OPEN AREA    | 51%                      |
| THICKNESS    | 3-5MM                    |
| STOCK STATUS | EX STOCK AND CUSTOM MADE |

## DRAGONSACLE



|              |                             |
|--------------|-----------------------------|
| MATERIAL     | ALUMINIUM, WEATHERING STEEL |
| MAX WIDTH    | 1200                        |
| OPEN AREA    | 63%                         |
| THICKNESS    | 30MM (A) 1.6MM (C)          |
| STOCK STATUS | CUSTOM MADE                 |

## PIC PERF DIRECTIONS

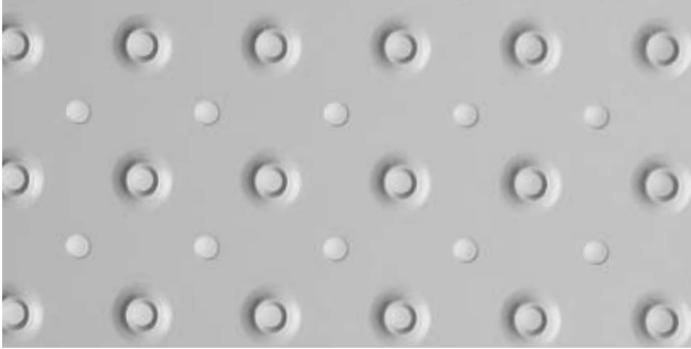


|              |                        |
|--------------|------------------------|
| MATERIAL     | ALUMINIUM              |
| MAX WIDTH    | 1400                   |
| OPEN AREA    | 51%                    |
| THICKNESS    | 3.0MM                  |
| WEIGHT       | 8.13 KG/M <sup>2</sup> |
| STOCK STATUS | CUSTOM MADE            |

\* Images are not to scale

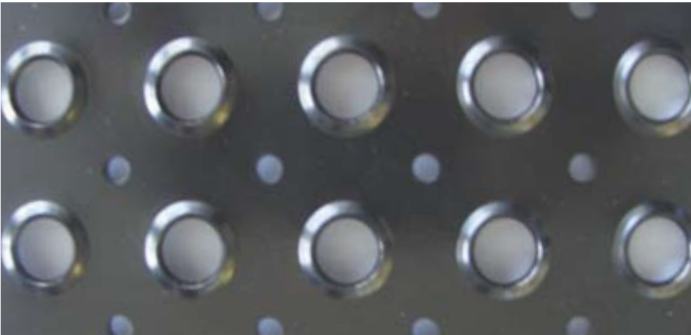


## SAFE T PERF 6 STILLETTO



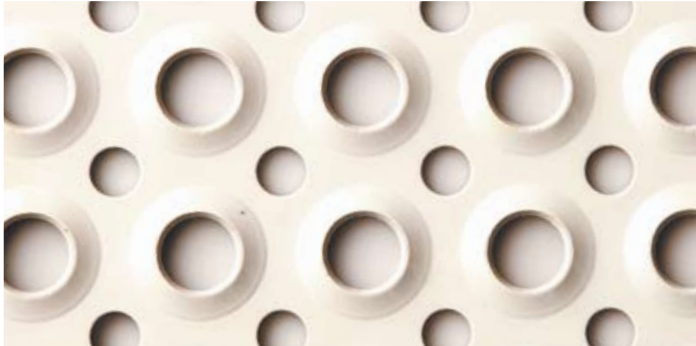
|              |  |
|--------------|--|
| MATERIAL     | STEEL, ALUMINIUM, T304 (S/S) & T316 (S/S)        |
| MAX WIDTH    | 1500   |
| OPEN AREA    | 4%   |
| THICKNESS    | 1.6-3.0MM (A), 1.2-2.5MM (S)<br>1.20-2.0MM (S/S) |
| WEIGHT       | 4.24 (KG/M2) (S) 2.2 (KG/M2) (A)                 |
| STOCK STATUS | CUSTOM MADE                                      |

## SAFE T PERF 14 UNIVERSAL



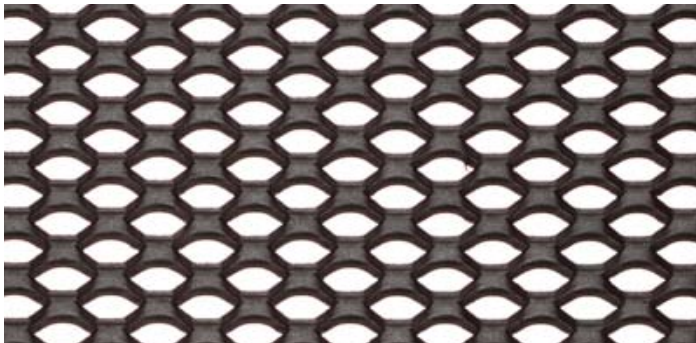
|              |  |
|--------------|--|
| MATERIAL     | STEEL, ALUMINIUM, T304 (S/S) & T316 (S/S)        |
| MAX WIDTH    | 1500   |
| OPEN AREA    | 13%  |
| THICKNESS    | 2.5MM (S), 3.0-4.0 MM (A),<br>1.20-2.0MM (S/S)   |
| STOCK STATUS | EX - STOCK, SELECTED PROFILES<br>AND CUSTOM MADE |

## SAFE T PERF 19 STOCK CRATE



|              |  |
|--------------|--|
| MATERIAL     | STEEL, ALUMINIUM, T304 (S/S) & T316 (S/S)                          |
| MAX WIDTH    | 1500   |
| OPEN AREA    | 23%  |
| THICKNESS    | 2.5-4.0MM (A), 1.2-2.0MM (S/S)                                     |
| STOCK STATUS | EX STOCK SELECTED PROFILES AND CUSTOM MADE<br>3.0-4.0 MM ALUMINIUM |

## JE PROFILE



|                      |                                |
|----------------------|--------------------------------|
| MATERIAL             | STEEL, ALUMINIUM               |
| OPEN AREA            | 27-45%                         |
| WEIGHT               | 13-17 (KG/M <sup>2</sup> ) (S) |
| NOMINAL SIZE OF MESH | LWM 19 SWM 11                  |
| THICKNESS            | 3.0MM                          |
| STOCK STATUS         | EX STOCK AND CUSTOM MADE       |

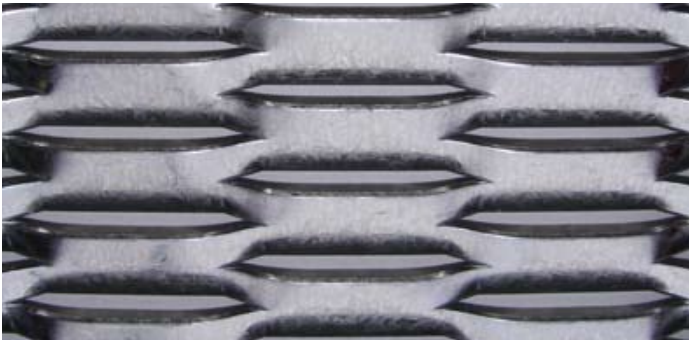
\* Images are not to scale

09-16



|                 |   |
|-----------------|---|
| MATERIAL        | STEEL, ALUMINIUM, STAINLESS STEEL                         |
| WEIGHT          | 6.2 (KG/M <sup>2</sup> ) (S) 2.2 (KG/M <sup>2</sup> ) (A) |
| NOMINAL SIZE OF | MESH LWM 28 SWM 9   |
| THICKNESS       | 1.6MM   |
| OPEN AREA       | 48-56%  |
| STOCK STATUS    | EX STOCK AND CUSTOM MADE                                  |

L7616 LOUVRE



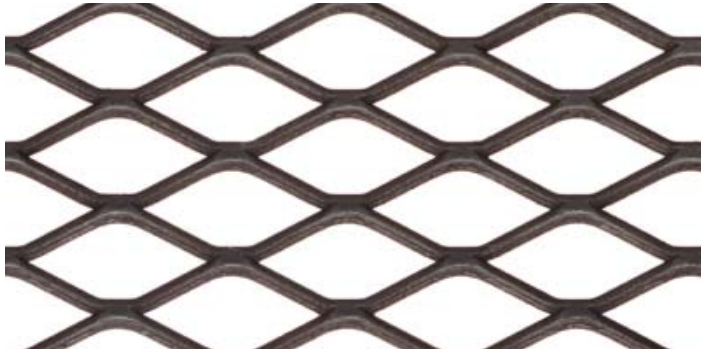
|                 |  |
|-----------------|--|
| MATERIAL        | GALVANISED, ALUMINIUM  |
| WEIGHT          | 4.02 (KG/M <sup>2</sup> ) (A) 11.2 (KG/M <sup>2</sup> ) (GB) |
| NOMINAL SIZE OF | MESH LWM 76 SWM 16   |
| THICKNESS       | 1.6MM  |
| OPEN AREA       | 21-66%   |
| STOCK STATUS    | EX STOCK AND CUSTOM MADE                                     |

**LOCKER**

A valmont COMPANY

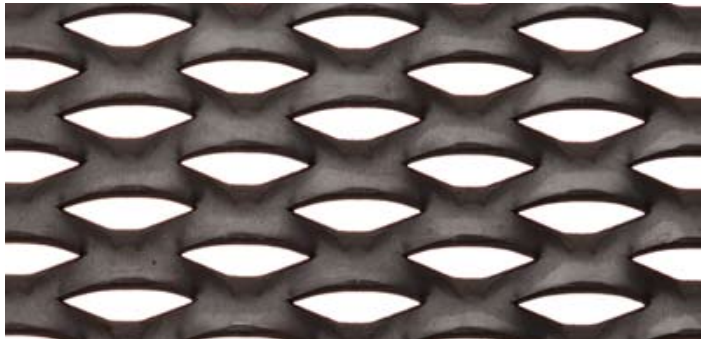
\* Images are not to scale

19-30



|                      |   |
|----------------------|---|
| MATERIAL             | ALUMINIUM, STEEL, T304 (S/S), T316 (S/S)                  |
| WEIGHT               | 7.9 (KG/M <sup>2</sup> ) (S) 2.9 (KG/M <sup>2</sup> ) (A) |
| NOMINAL SIZE OF MESH | LWM 50 SWM 19   |
| THICKNESS            | 3.0MM   |
| OPEN AREA            | 67-74%  |
| STOCK STATUS         | EX STOCK AND CUSTOM MADE                                  |

1225



|                      |  |
|----------------------|--|
| MATERIAL             | STEEL, ALUMINIUM   |
| WEIGHT               | 14 (KG/M <sup>2</sup> ) (S) 5.7 (KG/M <sup>2</sup> ) (A) |
| NOMINAL SIZE OF MESH | LWM 30 SWM 12  |
| THICKNESS            | 2.5MM  |
| OPEN AREA            | 26%  |
| STOCK STATUS         | EX STOCK AND CUSTOM MADE                                 |

\* Images are not to scale



## SUN919A



|                      |  |
|----------------------|--|
| MATERIAL             | ALUMINIUM, WEATHERING STEEL                                  |
| WEIGHT               | 6.33 (KG/M <sup>2</sup> ) (A) 17.9 (KG/M <sup>2</sup> ) (WS) |
| NOMINAL SIZE OF MESH | LWM 135 SWM45  |
| OPEN AREA            | 25%  |
| THICKNESS            | 3.0MM  |
| STOCK STATUS         | EX STOCK AND CUSTOM MADE                                     |

## SUN20



|                      |  |
|----------------------|--|
| MATERIAL             | ALUMINIUM, GALVABOND, STEEL, WEATHERING STEEL              |
| WEIGHT               | 3.6 (KG/M <sup>2</sup> ) (A) 10.5 (KG/M <sup>2</sup> ) (S) |
| NOMINAL SIZE OF MESH | LWM 120 SWM 34   |
| OPEN AREA            | 35%  |
| THICKNESS            | 1.6MM, 2.0MM, 3.0MM  |
| STOCK STATUS         | CUSTOM MADE  |



A valmont COMPANY

\* Images are not to scale

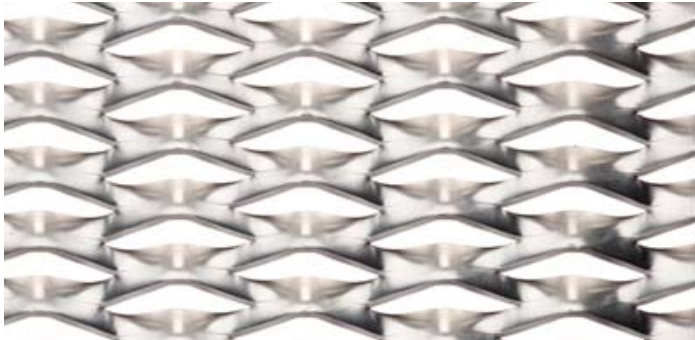
To align panels together extra allowance on sheet sizes is required.

## SUN636A



|                      |   |
|----------------------|---|
| MATERIAL             | ALUMINIUM, GALVABOND, STEEL                             |
| WEIGHT               | 3.6 (KG/M <sup>2</sup> )(A) 9.7 (KG/M <sup>2</sup> )(S) |
| NOMINAL SIZE OF MESH | LWM 75 SWM 30   |
| OPEN AREA            | 23%   |
| THICKNESS            | 1.6MM   |
| STOCK STATUS         | EX STOCK AND CUSTOM MADE                                |

## LM252625A



|                      |                          |
|----------------------|--------------------------|
| MATERIAL             | ALUMINIUM                |
| WEIGHT               | 5.0 (KG/M <sup>2</sup> ) |
| NOMINAL SIZE OF MESH | LWM 30 SWM 15            |
| OPEN AREA            | 26%                      |
| THICKNESS            | 2.5MM                    |
| STOCK STATUS         | CUSTOM MADE              |

\* Images are not to scale  
To align panels together extra allowance on sheet sizes is required.



SENTINEL LOUVRE



SENTINEL GRATING



T BAR SECTION

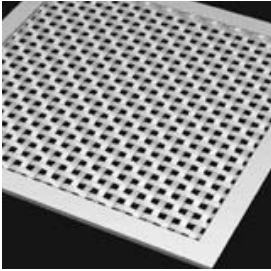


DAYLIGHT SAVING SCREEN

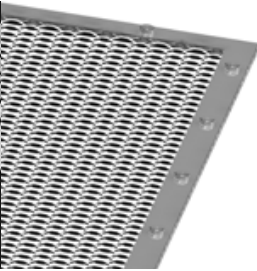


**LOCKER**

A valmont COMPANY



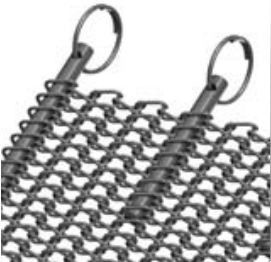
L3.0A CAP FIXING SYSTEM



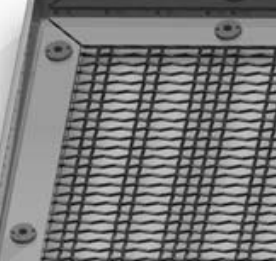
L2.0A FLAT BAR FIXING SYSTEM



L5.1A PETITE APERTURE TENSION FIXING SYSTEM



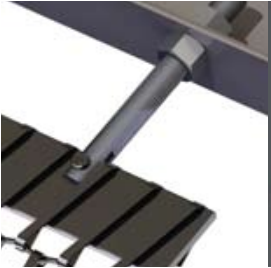
TRANSIT CURTAIN SCREWS



L1.0A ANGLE FIXING SYSTEM



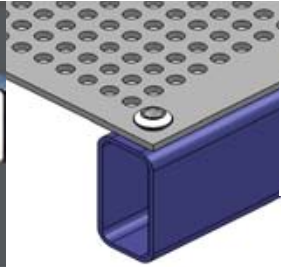
L4.0A SPIDER FIXING SYSTEM



5.2 LARGE APERTURE FIXING SYSTEM



EC1 CLAMP



ISOLATOR

## FIXING SYSTEMS



A **valmont**  COMPANY

**Email:** [info@locker.com.au](mailto:info@locker.com.au)

**Website:** [www.locker.com.au](http://www.locker.com.au)

**TOLL FREE** 1800 635 947

**Email:** [sales@lockernz.co.nz](mailto:sales@lockernz.co.nz)

**Website:** [www.lockernz.co.nz](http://www.lockernz.co.nz)

**TOLL FREE** 0800 285 837

MELBOURNE • SYDNEY • BRISBANE • TOWNSVILLE • DARWIN • ADELAIDE • PERTH • AUCKLAND • WELLINGTON  
• CHRISTCHURCH • PALMERSTON NORTH • MUMBAI