

FRONTIER™ ACOUSTIC FINNS



FRONTIER™
DESIGN: TUNDRA
COLOUR: EMPIRE



FRONTIER™ ACOUSTIC FINES

Frontier™ revolutionises what it means to have beautifully designed acoustics. With modular fins that can be arranged and spaced in countless formations, Frontier is available in five styles and is designed for targeted sound absorption for the commercial, education and hospitality sectors. There are 16 colours to choose from which can be mixed and matched to bring the designs to life on walls and ceilings.

Frontier's incredible acoustic performance is thanks to the highly-absorbent, compressed, polyester felt and fins that are fully adjustable both before and after installation. As noise operates at different frequencies, by moving the fins closer and further apart, Frontier can be 'tuned' to create the ultimate space for people to work and play within.

At Autex, we want to provide a seamless install experience, so we've created our own Frontier Kit complete with our internationally patented clip and aluminium channel that allows easy adjustments on site. This also means Frontier can be installed to perfectly fit the designed space without compromise.

If you have an idea for a custom design, let's work together to make it happen. We have an in-house design team dedicated to customisation so we have the capacity to bring your own vision to life.

FRONTIER™

ACOUSTIC FINS

FEATURES AND BENEFITS

- Delivers excellent acoustic performance
- Suitable for wall and ceiling applications
- Supplied in kits including acoustic fins and fixing hardware
- Can be subtle or a feature design for small or large spaces
- Low VOC – beneficial for IEQ
- UV stabilised and resistant to colour fade so it'll always look as good as the day it was installed
- Not made from fibreglass or mineral fibre and does not contain formaldehyde, crystalline silica or other carcinogens, common to traditional fibrous absorbers
- Cleanable and easily demountable
- Includes high recycled content and is recyclable at the end of its life
- Highly durable so you're assured of long-term stability and performance





FRONTIER™

ACOUSTIC FINNS

APPLICATIONS

- Suitable for offices, education, retail, hospitality and commercial interiors.
- Fix or suspend acoustic ceiling and wall system
- Creates breakout zones in large open plan areas
- Hides ceiling services

SPECIFICATION

Acoustic absorption system shall be Frontier () as compiled by Autex www.autexindustries.com

Acoustic absorber Frontier™ fins (2400/custom)mm length x (300mm nominal / Axis 150mm) depth x (12/24) mm gauge, spaced at ()mm centres. Colour (), sound absorption: 100/200mm centres Class B, 300mm centres Class C, Fire Rating ISO 9705: 1993: Group 1-S, AS ISO 9705 – 2003: Group 1, EN13501-1:2007+A1:2009: B - s2, d2, ASTM E-84-15a -12mm: Class A, FS:0 - SD:45.

Supplied with Frontier Connector Clips, Frontier Channel, Frontier Fins. Fix with 6g countersink fastener appropriate for the substrate. Install as per Frontier Install Instructions.

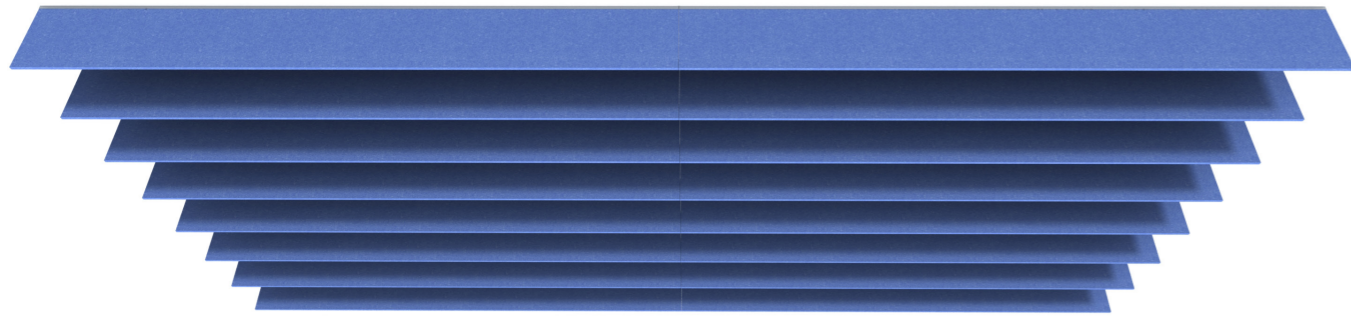
MADE FOR THE **MODERN OFFICE**

The premium sound absorbing nature of Frontier™ creates an acoustically sheltered environment in open-plan offices.



FRONTIER™

STANDARD DESIGNS



DESIGN TUNDRA COLOUR GALAXY - SEE PAGE 19 FOR FULL COLOUR RANGE



DESIGN DUNE COLOUR FALLING WATER - SEE PAGE 19 FOR FULL COLOUR RANGE

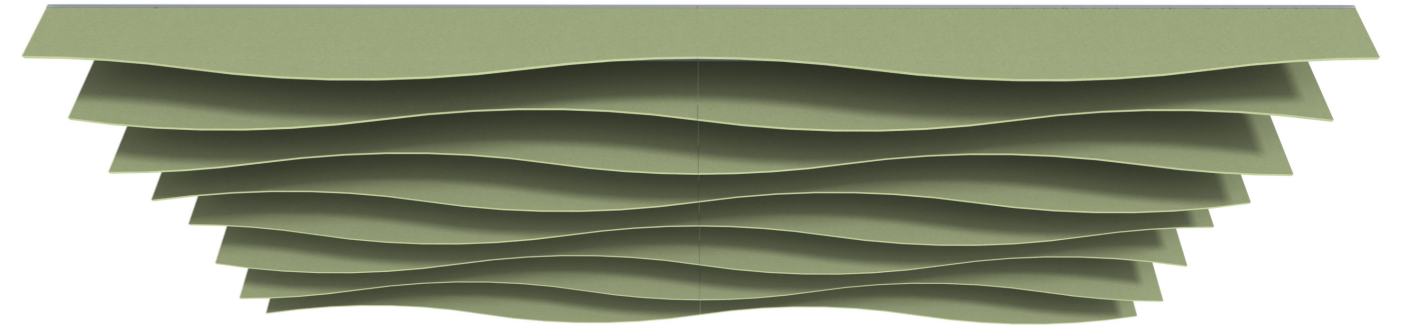
*Images as shown are with 2 packs.

FRONTIER™

STANDARD DESIGNS



DESIGN SIERRA COLOUR LOTUS - SEE PAGE 19 FOR FULL COLOUR RANGE

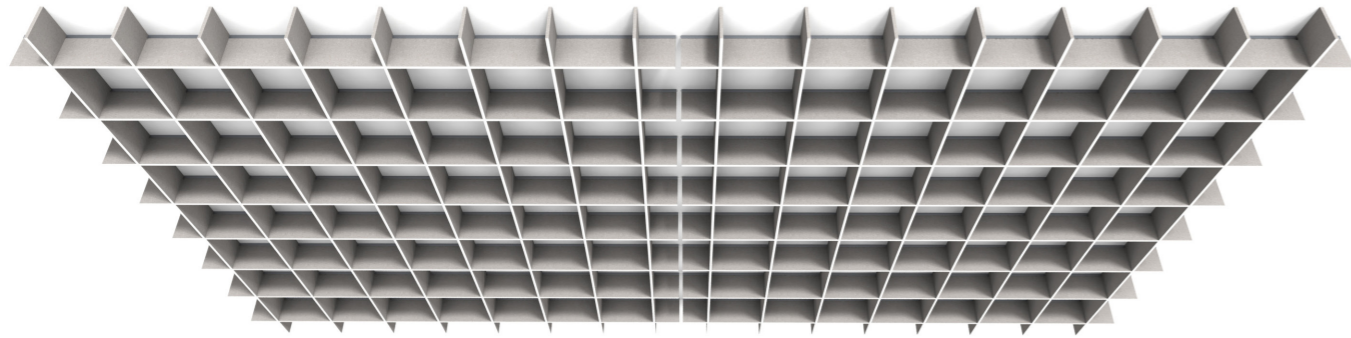


DESIGN TALUS COLOUR ACROS - SEE PAGE 19 FOR FULL COLOUR RANGE

*Images as shown are with 2 packs.

FRONTIER™

STANDARD DESIGNS



DESIGN AXIS (12MM ONLY) **COLOUR** SAVOYE - SEE PAGE 19 FOR FULL COLOUR RANGE

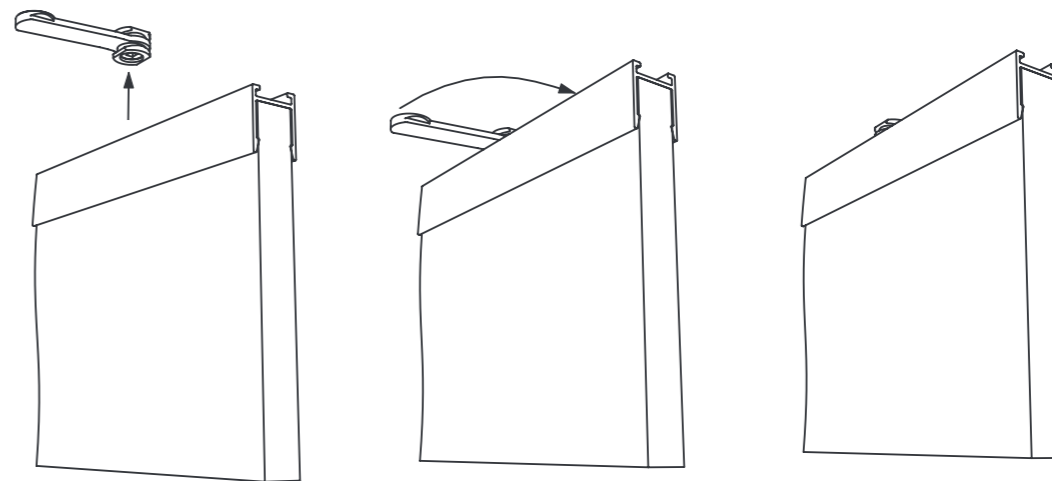
*Images as shown are with 2 packs.





FRONTIER™

CHANNEL AND CONNECTOR SYSTEM



With Frontier™ Connector perpendicular to the channel, snap channel onto Connector.
Once the position is confirmed, rotate Connector 90 degrees to lock.

PATENT PENDING

NZ 727634 | AU 2016273959 | UK 1621613.7

FRONTIER™ ACOUSTIC FINES

CUSTOMISATION

We know that no two projects are exactly the same, so why should the products or services going into them be? This is why we are proud of our ability to customise any of our products to suit your needs.

Being manufacturers, engineers and creatives, we have the capacity to transform, cut, mould, or build our products to create acoustic solutions truly unique to you and your space.

If you have an idea, let's work together to make it happen. If you want to customise Frontier™ for your next project, get in touch with your Account Manager or visit our website www.autexindustries.com/contact-us

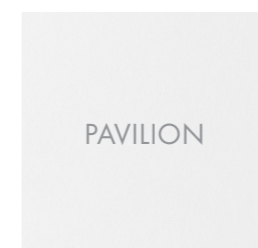
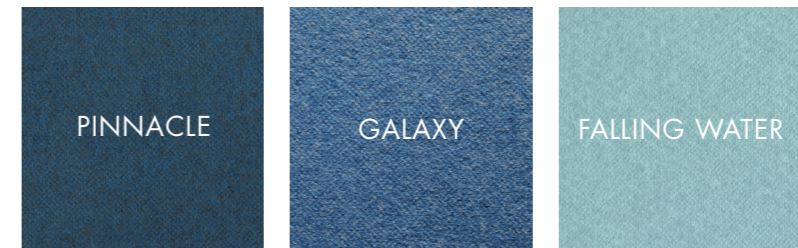
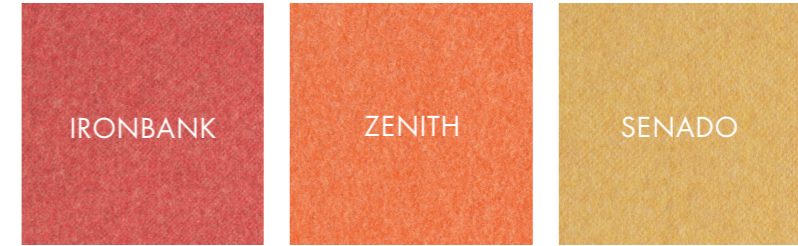


FRONTIER™
DESIGN: CUSTOM
COLOUR: SAVOYE
WITH GOLD PRINT

FRONTIER™
 DESIGN: TALUS
 COLOUR: SENADO,
 SAVOYE & EMPIRE



COLOUR OPTIONS



To order a colour sample please
 contact your Account Manager or
 visit www.autexfrontier.com

LIGHT REFLECTANCE VALUES BY COLOUR

Pavilion	77.74	Bosco	29.38
Savoye	46.63	Zenith	22.39
Opera	49.21	Iron Bank	12.66
Acros	41.95	Flatiron	24.58
Falling Water	36.03	Empire	5.65
Pinnacle	8.48	Petronas	1.98
Senado	44.76	Lotus	15.80
Galaxy	15.63	Herald	15.18

FIRE RATINGS

(Conducted on 12mm Cube™)

ISO 9705: 1993

Classification: Group 1-S
Smoke Production Rate: <5.0m²/s
As required by NZBC C/VM2

AS ISO 9705 - 2003

Classification: Group 1
(SMOGR_{Arc}): <100m²/s²
As required by BCA C1.10

Fl 4974 dated 16th September, 2012

EN13501-1:2007+A1:2009

B - s₂, d₂

WF 336911 dated 25th February, 2014

ASTM E-84-15a

Class A, FS:0 - SD:45

RJ4479-2 dated 25th January, 2015

VOC EMISSIONS

The chemical emissions from Autex polyester has been tested (Report: CV170908) and classified as low VOC. VOC concentration: 0.009 mg/m³ (7 days)

MOISTURE ABSORPTION

Polyester fibre when exposed to an atmosphere of 50°C at 90% relative humidity for four days showed moisture absorption of less than 0.03% by weight. Polyester is not affected by moisture, mould or mildew and will not rot or deteriorate in intended use situations.

PATTERN REPEAT

Non-woven. No pattern repeat but product has directional grain. Product may vary from samples and batch to batch due to fibre blending and lay-up which is an inherent feature of this product.

FABRIC CARE

Blot spills from fabric quickly. Wipe with a damp cloth. Avoid rubbing and excessive amounts of water as this will affect the finish. Use carpet or upholstery shampoo as directed. Blot with a clean dry cloth after each application of solution. Custom printed Cube™ requires the services of a specialist cleaning company. Refer to the Frontier™ Cleaning & Maintenance Guide for more information.

ENVIRONMENTAL

Autex is committed to best practice through our ISO 9001 and ISO 14001 accredited Quality and Environmental Management Systems.

Autex Cube contains a minimum of 45% previously recycled polyester fibre (from PET bottle-flake) ensuring comparatively low embodied energy. Off-cuts and manufacturing waste is re-used or recycled wherever possible. Uncontaminated Cube can be recycled.

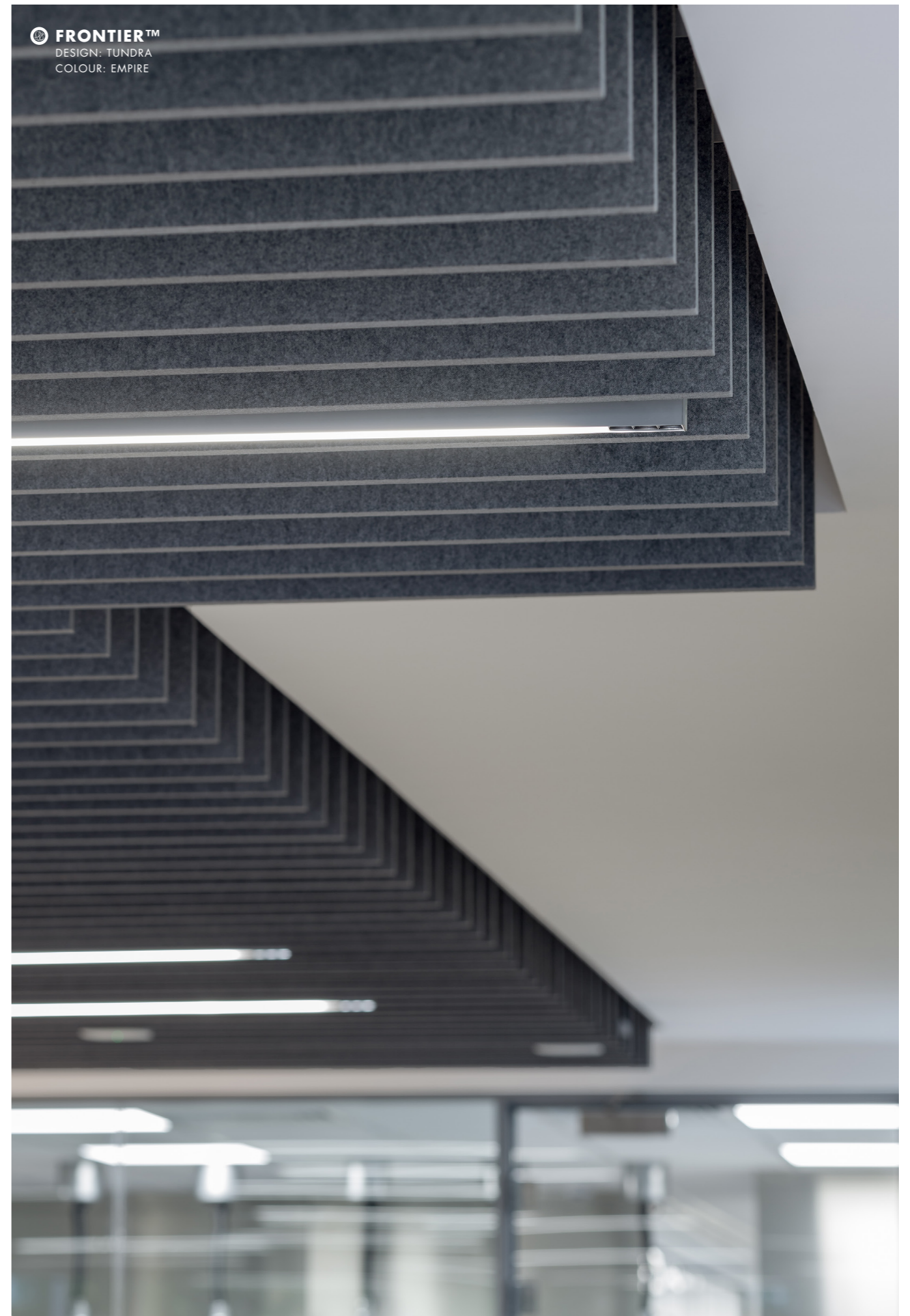
Autex Cube is manufactured from 100% polyester fibres and do not contain formaldehyde binders. Autex polyester fibres support safer indoor air quality and will not become a potential airborne pollutant. Independently certified by Declare (Red List Free) and Product Health Declaration (Platinum level).

SERVICE

For further information about Frontier, Autex Cube or any other Autex product, please contact your Autex Account Manager or visit our website.

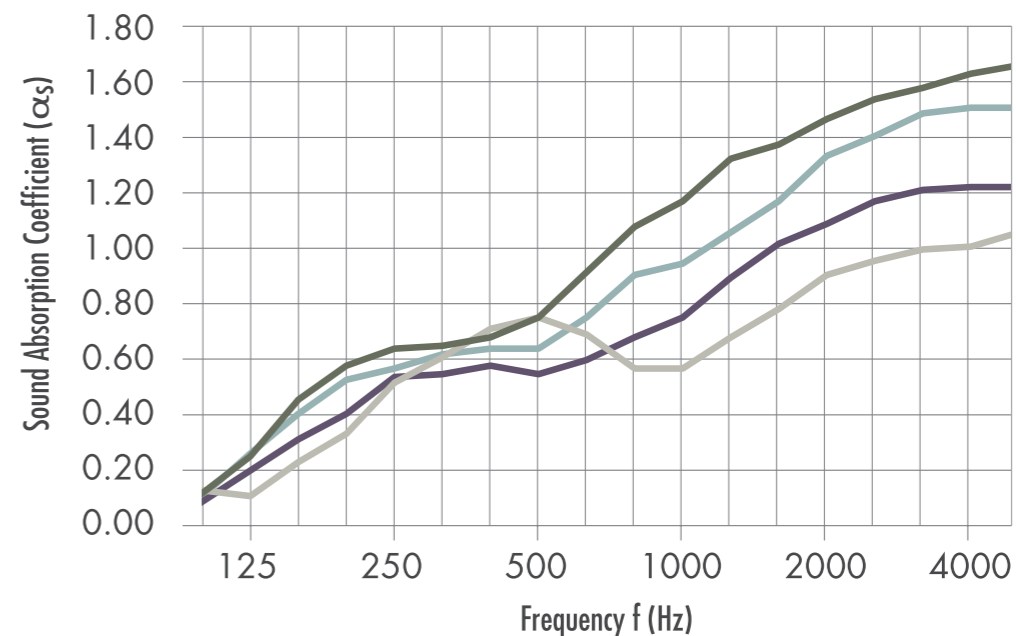
Frontier is a trademark of Autex Industries and is proudly manufactured in New Zealand by Autex Industries Ltd and Australia by Autex Pty Ltd.

FRONTIER™
DESIGN: TUNDRA
COLOUR: EMPIRE





SOUND ABSORPTION COEFFICIENTS ACCORDING TO ISO 354. UNIVERSITY OF AUCKLAND TESTING SERVICE FRONTIER 12MM - TEST NO. T1525-1, T1525-16, AND T1525-17. FRONTIER AXIS - TEST NO. T1525-11



	Frequency (Hz)	125	250	500	1000	2000	4000	NRC
Tundra, Dune, Sierra and Talus	αP 100mm spacing	0.30	0.65	0.80	1.00	1.00	1.00	1.00
	αP 200mm spacing	0.30	0.60	0.70	1.00	1.00	1.00	0.90
	αP 300mm spacing	0.25	0.50	0.60	0.80	1.00	1.00	0.75
Axis	αP 300mm spacing	0.20	0.50	0.75	0.65	0.90	1.00	0.70

PRODUCT SPECIFICATIONS

Product Name Frontier™
Composition Fin: 100% Polyester Fibre (PET)
 Channel: Aluminium
Weight 12mm: 2300gsm
 24mm: 4600gsm
Size Fin width: 2400mm
 (at 300mm centres) 12mm: pack covers 5.0m²
 24mm: pack covers 2.5m²

PACK SIZE

Thickness	Fins	Channels	Connectors	Pack Weight
12mm	8	8	16	20kg
12mm (Axis only)	16	8	16	
24mm	4	4	8	

FIN DEPTH

Nominal Average 150 – 300mm.

INSTALLATION

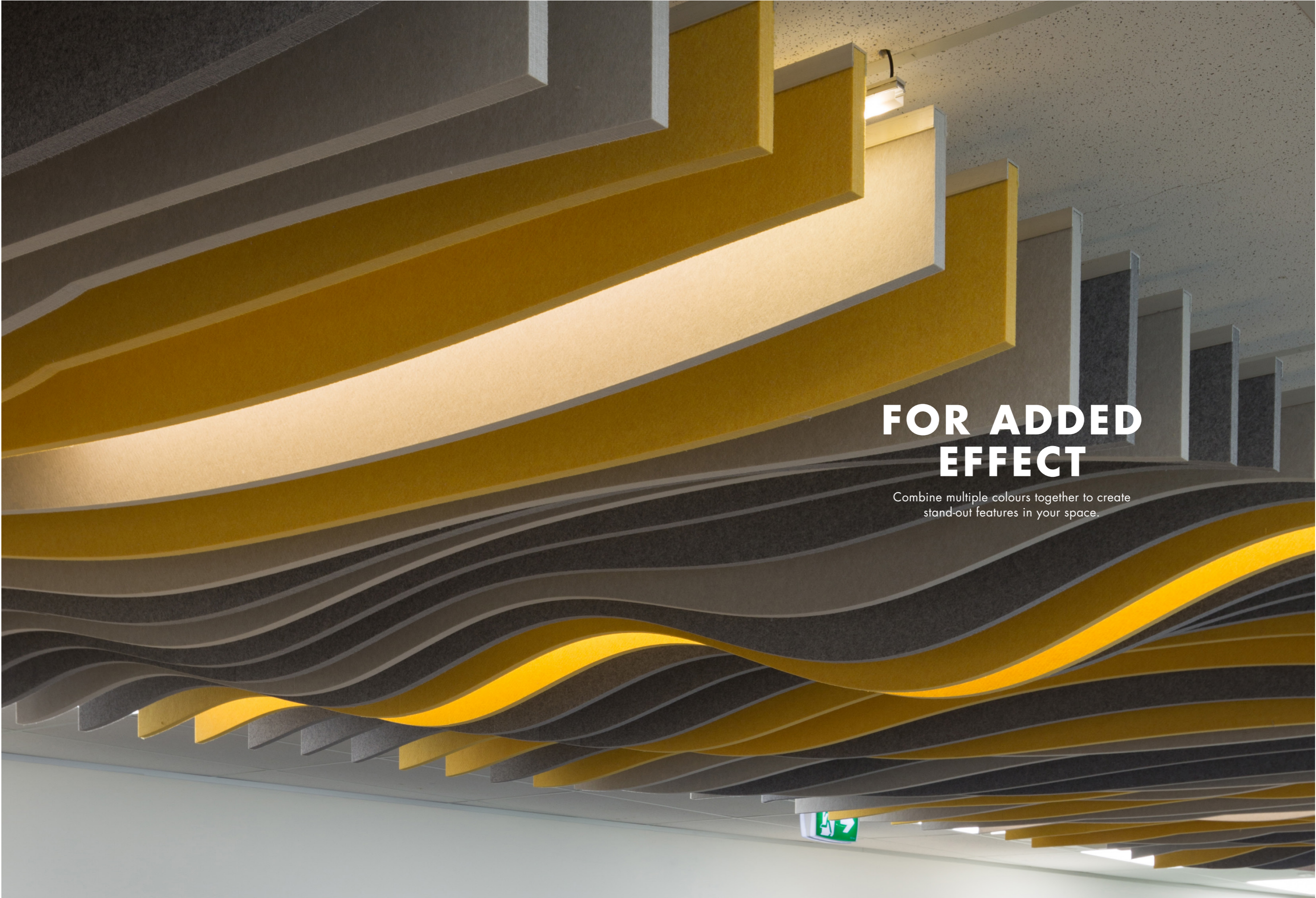
Refer to Frontier Install Instructions for installation guidelines.

FASTNESS TO LIGHT

Frontier is suitable for indoor use only.

ACOUSTIC PERFORMANCE

Frontier is specifically designed to reduce and control reverberated (echo) noise in building interiors.



FOR ADDED EFFECT

Combine multiple colours together to create stand-out features in your space.



CARING FOR THE ENVIRONMENT

Autex products are manufactured using 100% polyester fibre and aim to contain a minimum of 50% previously recycled fibre (from PET plastics). They are designed to be recycled at the end of their life too. We use Life Cycle Analysis (LCA) to understand the environmental impacts of our products and set targets to reduce these. All our products have been verified as low VOC and are free from harmful chemical binders making them great for indoor environmental quality (IEQ).

We have continual improvement programmes in which we implement a range of initiatives to mitigate the environmental 'hotspots' that we have identified. Our products are GreenRate Level A, LCARate Gold and PHD level platinum certified.

Frontier™ is made from Cube™ which is Declare[®] certified to be Red List free and can be used in Living Building Challenge projects. Autex has a high functioning Environmental Management System (ISO 14001) to enhance our environmental performance and contribute to sustainable development.



Declare.



**Autex Acoustics
Asia Sdn. Bhd**

03-05, Indah Walk 3,
Japan Indah 15,
Taman Bukit Indah,
79100, Iskandar Puteri,
Johor

www.autexacoustics.asia

Autex Industries Ltd

702-718 Rosebank Rd
Private Bag 19988
Avondale 1746, Auckland
New Zealand
Freephone **0800 428 839**
Phone **+64 9 828 9179**
Fax **+64 9 828 5810**

www.autex.co.nz

Autex Pty Ltd

166 Barnfield Road
PO Box 5099
West Heidelberg, Melbourne
VIC 3081, Australia
Freephone **1800 678 160**
Phone **+61 3 9457 6700**
Fax **+61 3 9457 1020**

www.autex.com.au

Autex Acoustics Ltd

Unit J4, Lowfields Way,
Lowfields Business Park,
Eland, West Yorkshire
Hx5 9Da
United Kingdom
Phone **+44 (0) 1422418899**

www.autexacoustics.co.uk

Autex Acoustics LLC

Los Angeles, CA
USA
Phone **+1 805 407 9256**
Fax **+1 805 457 8932**

www.autexacoustics.com