

## EXCLUSIVE EUROPEAN LIGHTING



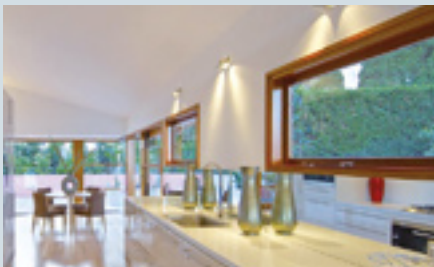
Restaurant & cafe lighting



Bathroom lighting solutions



Foyer lighting solutions



Kitchen lighting solutions



Exterior lighting solutions



With over 70 years lighting experience, Special Lights is one of the most established lighting businesses in Australia.

Special Lights' heritage in the lighting industry has facilitated the establishment of strong, exclusive, long-term partnerships with some of Europe's best lighting designers and manufacturers. Our team dedicates time every year to attend European trade events in order to keep up with the latest in lighting technology and design trends. This has enabled us to provide an extensive and unique range of products to the Australian market. A small selection of these brands and products are included in this brochure to highlight some of our architectural and decorative product solutions.

A key point of difference is the advice we provide to our residential and commercial customers. With a philosophy that lighting should always be specified to suit both the functional and decorative style requirements of a project, our professional team members deliver optimal solutions. These solutions draw on products from a variety of local and international supplier relationships.

### DESIGN SERVICE

In addition to our vast range of unique products, Special Lights have an exceptional internal design service capability. For situations or projects where design or specification support may be required, our team of design specialists are able to assist.

The level of service can be tailored to the specific needs of each job, ranging from simple product specification recommendations to a full end-to-end lighting service including detailed project management.

Visit our website [www.speciallights.com.au](http://www.speciallights.com.au) and click on **design services** for more information.



# boaz

## TECHNICAL LIGHTING PRODUCT SOLUTIONS

Designed in Australia

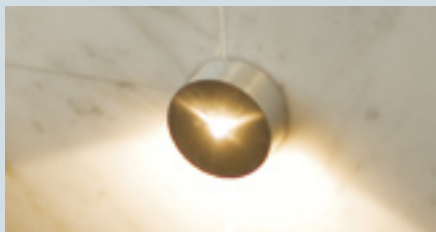
Boaz is a range of premium products designed for specific purposes in Australia, where existing offerings do not provide an adequate solution.



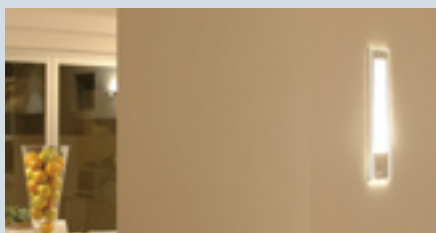
The **Audrey** downlight has a stainless steel body, deep baffle, 4 colour finishes, and an IP44 rated option. Available in halogen, fluorescent, or LED.



The **Dome** is ideal in kitchens, pantries, wardrobes and bathrooms. Capable of taking a 50W halogen bi-pin, its small 80mm diameter will surprise.



The **Otto 1** is a surface mounted step light, perfect for post construction installations. Powered by a 1W, true warm white, Tridonic Atco, LED.



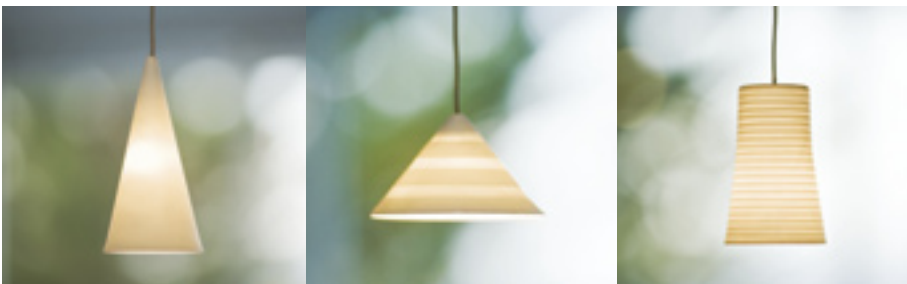
A modern recessed wall fitting, the **Concerto** is available in halogen, fluorescent or LED.



## INTELLIGENT STYLE MEETS GERMAN PRECISION

Designed and made in Germany

Steng is a family owned and operated business with over four generations of lighting innovation. Steng's lighting systems combine advanced technology, German precision and intelligent style to deliver an understated architectural result. Their manufacturing facilities are based in Stuttgart and are predictably of the highest quality standards with their pioneering products receiving international acclaim.



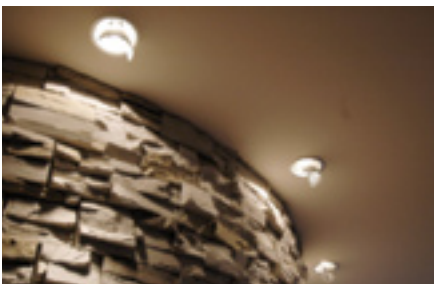
**Herring** by Steng is a union of modern technology, traditional materials and skilled craftsmanship that creates porcelain lights with a gentle shimmering translucence.



The **Lightness** pendant is a modern interpretation of the chandelier.



The **Lumo** is adjustable both in height and inclination, tilting seamlessly to any angle.



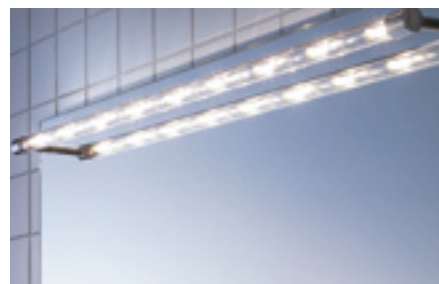
The **Optimal** downlight system creates Light that can be directed precisely to where it is needed.



The **Brigg** and **Til** range of up-lighters are among the most effective on the market.



The **Lumelennium** is a spectacular pendant that makes a statement in any situation. Its broad dish contains 200 light bulbs.



The **Pipe** is an elegant solution for bathroom lighting. Mirror surface or wall mounted options available.

## SPECIAL LIGHTS



## INNOVATIVE LED TECHNOLOGY WITH ITALIAN QUALITY & DESIGN

Designed and made in Italy

In a rapidly evolving LED market, L&L represents a reputable and well established company. They have a passion for innovation and over 25 years experience working with laser and LED technologies. L&L products are designed & manufactured in Italy to the highest of standards by a highly qualified team.



### WATERPROOF EXTERIOR LIGHTS IP65 - IP68



The ultra slim **Simply 1.0** has a depth of only 7mm making it perfect for cabinetry installations. Rated IP44.



A stylish modern recessed downlight, the **Quad** range is available in single, double and triple configurations.



The robust **Bright 2.0** drive over-ground light is manufactured from 316 Stainless Steel. IP68 Rated.



**Look 5.1** is a powerful alternative to a halogen downlight and ideal for commercial environments. Available in square or round.



The waterproof **Goccia 1** is small enough to be concealed almost anywhere. A popular application is to recess it behind transparent mosaic tiles. Rated IP68.



The innovative design of **Twister 2.0** allows for it to light along the ground and up the wall, producing a stunning exterior effect. Rated IP65.



The **Line 1.0** is a sleek internal step light available in a variety of surface finishes.



The **Eyes 3.0** recessed spotlight features a unique adjustable "eyeball" lens that will tilt up to 35°.



The powerful **Bright 5.0** effortlessly replaces a conventional halogen ground pot. Rated IP68.



**Pivot 1.0** is a very compact and versatile spotlight suitable for both internal and external use. Rated IP65.



**Profile 3.0** is an architectural extrusion concealed within a glass cylinder. The entire profile will rotate 360° to redirect the light.



The radial light produced by the **Bright 9.0** adds a stunning effect to exterior paths and driveways. IP68 rated. Example above.

# 100% LED POWERED LOW ENERGY LOW MAINTENANCE

For more information about Special Lights visit [www.speciallights.com.au](http://www.speciallights.com.au)



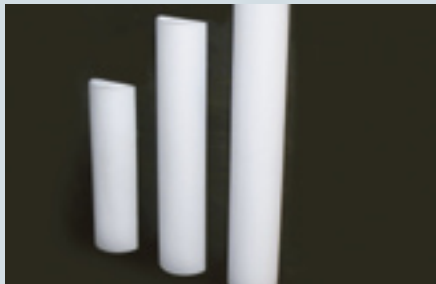
## PREMIUM OPAL GLASS PRODUCTION EXPERTS

Designed in Germany and made in Europe

Heart Glas are German glass production experts with over 40 years of traditional craftsmanship experience combined with state-of-the-art production technology. Manufactured in Europe, Heart Glas' mouth blown products feature the highest quality opal glass, with design overlays applied by a number of unique processes.



**Magma** is achieved by infusing black ink into molten red glass.



These wall brackets are available in a rectangular or curved profile.



**Triplex** glass utilises a unique etching technique where the outer layer of glass is carved away.



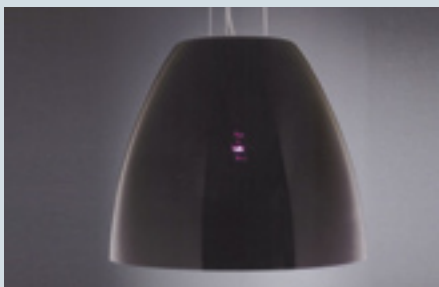
This range incorporates a unique balance of modern style with traditional gold or silver leafing techniques.



One of many opal glass wall brackets available in a variety of sizes.



These dual layered **micro pendants** are part of an extensive selection.



This **Black Glass** pendant appears to be glossy black when off and illuminates to a deep purple.



Heart Glas' collection of opal oysters covers a range of different profiles, a number of which will suit compact fluorescent lamps.



## DEDICATED TO DESIGN EXCELLENCE

Designed and made in Spain

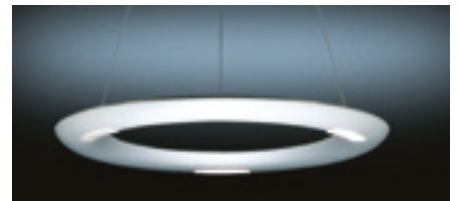
Since 1960, Milan Iluminacion has been committed to providing products with a differentiated and distinctive feel. Their strong focus on design is modern & urban, reflecting their hometown of Barcelona. High quality metal castings characterise much of the range.



Milan's skilfully articulated **Elea Arm** ensures freedom of movement and stability.



The **Rondo** is well known for its classic style and popularity.



The **Ra pendant** uses reflected light to illuminate a space.



One of many wall bracket designs, the **Dau** creates an unusual play of light.



The **Innox** is a new designer piece utilising fluorescent technology.

## INGENIOUS DESIGN CREATIONS FROM ITALY

Designed and made in Italy

Studio Italia Design combines crisp, decorative design with superb engineering to create innovative lighting for residential and commercial interiors. Having worked with the medium of glass for over 60 years in the Murano region, their lighting fixtures are still designed, produced and assembled in Italy with the highest levels of quality and attention to detail.



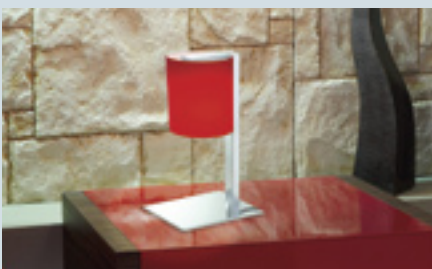
**Kapp** is a dramatic glass feature pendant, handblown by Murano Masters. Its 1.65m diameter makes a strong statement.



The **A-Box** recessed ceiling fitting provides indirect fluorescent lighting and separately switched spot lights for direct focus.



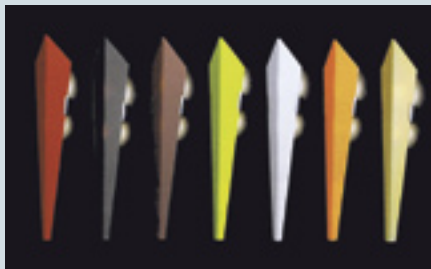
The metallic woven sphere of the **UFO** adds a bold design element to any room.



**Minimania** has a sleek metallic base with handblown glass diffusers in several colour selections.



**Slim** is a contemporary fluorescent wall light with an innovative magnetic attachment for simpler lamp changes.



The stylish tapered blade design of the **Lancia** is available in a variety of colour options.



The **Tris** is a stylised clover design available in several sizes for both pendant and wall bracket versions.

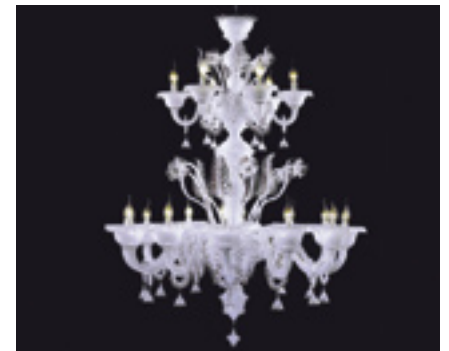


**Blow** combines art and function in this innovative table lamp. Light direction is controlled by an external magnet!

## TRADITIONAL & MODERN MURANO GLASS EXPRESSIONS

Designed and made in Italy

Arte di Murano is driven by a passion for Murano glass creations which span traditional and modern styles. The beautiful hand-made chandeliers are brought to life by the artisan's skill and vision. A strong customer focus provides the flexibility to produce almost any customised design required.



**Fern Cup** is at the intersection of modern and traditional design. Its stunning "fern" leaf detail always encourages a second look.



**Sleek Droplet** is a modern chandelier that combines clean lines with a contrasted "droplet" colour.

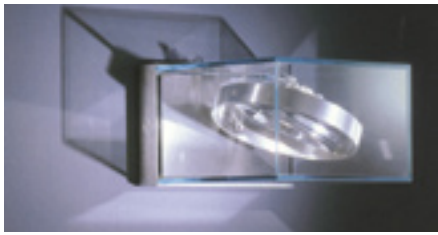


**Lure** is a pendant design with multiple satin glass suspensions from a single canopy.

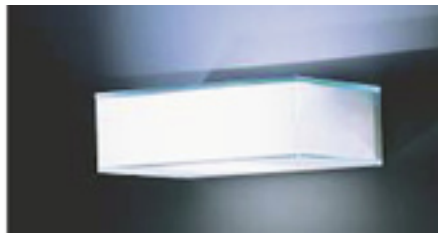
**SUPERIOR OUTDOOR LIGHTING DISTINGUISHED BY DESIGN**

Designed and made in Germany

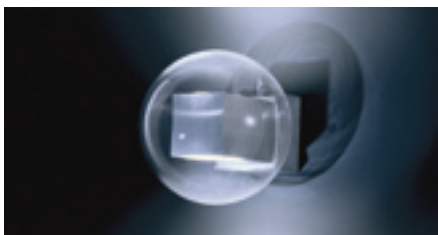
IP44 has an almost obsessive focus on prestigious design for exterior lighting. Their fastidious production techniques see the latest in machining processes matched with hand assembly. Their leading IvyLight© LED technology produces equivalent light levels to halogen lamps and is available in several product options.



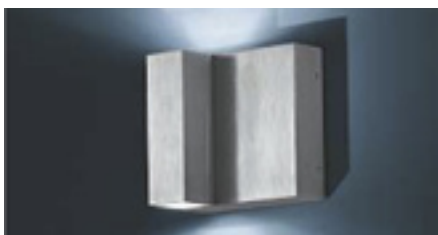
The **Ann ar111** features a rotational stainless steel ring within a cubic glass casing. Rated IP54



The small 15cm width of the **Issy 2** makes it ideal for exterior or bathroom use. Made using opal toughened safety glass. Rated IP54.



The **Globe's** hand machined aluminium base seamlessly meets the form of the glass. Available in IvyLight© LED or halogen. Rated IP54.



**Miar** is a technical feature during the day and an effective light at night. Available in IvyLight© LED or halogen. Rated IP54.

**CLASSIC & CONTEMPORARY OUTDOOR DESIGNS FROM FRANCE**

Designed and made in France

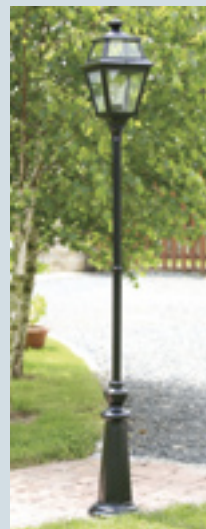
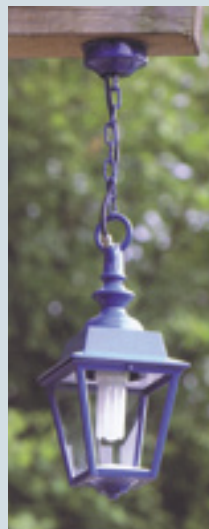
Since 1910, Roger Pradier has specialised in manufacturing traditional outdoor light fittings of exceptional quality. In more recent years, leading company designers have developed a broad range of unique contemporary fixtures which display the "RP Design" name. Roger Pradier products are available in many different colours and the company offers a limited warranty of 25 years against the oxidation of the aluminium surfaces.



**Corum's** Mediterranean influenced design delivers light up and down as well as through the decorative pattern in the front face. Rated IP44.



**Brick** is a modern wall light designed for compact fluorescent lamps. Suitable for both residential and commercial environments. Rated IP44.



The Roger Pradier range includes an enormous selection of exterior pendants and lamp posts. The **Chenonceau** is a decorative full coach pendant and the **Place des Vosges 2** is a stylish example of a traditional lamp post. Rated IP44



Inspired by ocean waves, **Surf** provides up and down illumination and features a slimline band of decorative light. Rated IP44.



**Igloo** is a surface mounted ground uplighter. Ideal for lighting up walls, pillars, trees or other garden features. Rated IP55.



**Louis Philippe 7** is a traditional half coach light incorporating subtle modern influences. Designed for energy saver lamps. Rated IP44



**Bamboo** is an innovative exterior bollard which is fitted with a rotatable head to provide for easy adjustment of the light direction. Rated IP54.