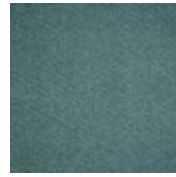
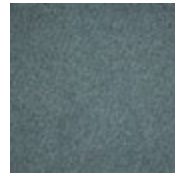




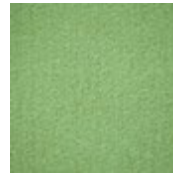
AVOCADO



SPEARMINT



SAGE



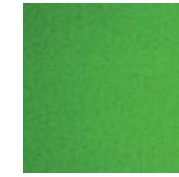
JADE



LIME



WASABI



GRANNY SMITH



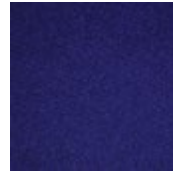
AZURE



OCTANE



STATELY



INK



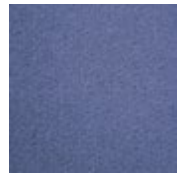
STONEWASH



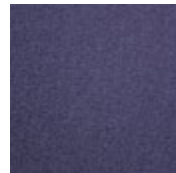
ATLANTIS



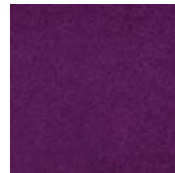
ELECTRIC BLUE



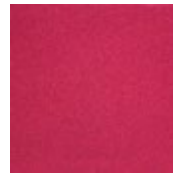
CALYPSO



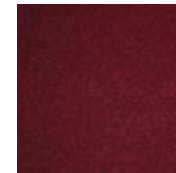
BLUSH



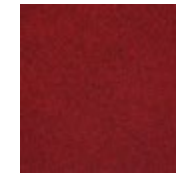
PHANTOM



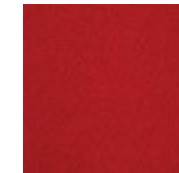
RASPBERRY



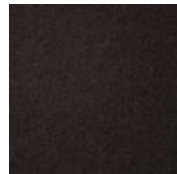
THEATRE



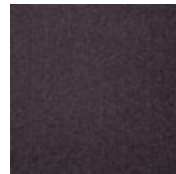
CHILLI RED



BLAZING RED



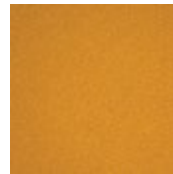
LIGHTSOUT



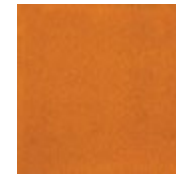
CINDER



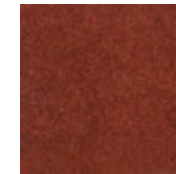
CITRUS



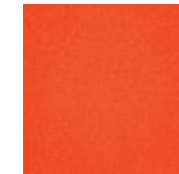
CLAY



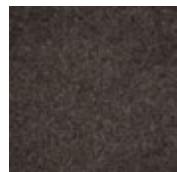
SIMBA



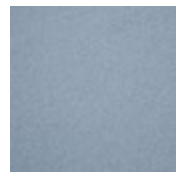
VINTAGE



BRILLIANT ORANGE



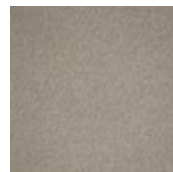
BARK



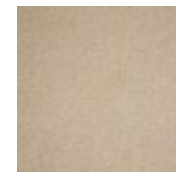
PORCELAIN



MYST



FAWN



SANZ



KOALA



SILVER

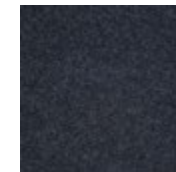
This colour guide is intended as a digital representation only. Slight variations in colour may be experienced due to the nature of the manufacturing process. Please contact your Autex Representative to request product samples.



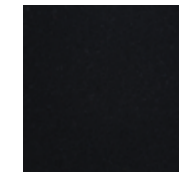
www.autex.co.nz | www.autex.com.au | www.autexacoustics.co.uk



CIVIC



CHARCOAL



NOIR