



CAROMA
Artisan

Elvire

BATHROOM COLLECTION



Caroma Artisan represents the pinnacle of over 75 years of master craftsmanship in bathroom design. The range features distinct bespoke solutions delivering an experience of unsurpassable luxury. At the leading edge of global bathroom design, this Artisan range encapsulates the best of modern Australian ingenuity and innovation.

Caroma Artisan marks a new benchmark in bathroom luxury with its unique combination of intuitive design, beautiful aesthetics and environmentally sustainable solutions.

"Carefully crafted, the **Elvire** collection is where nature and luxury unite. It brings together a minimalist design aesthetic with beautiful materials for a stunning bathroom experience."



LDm

- Luke Di Michiel,
Caroma Industrial Designer



Elvire

Caroma is proud to introduce the Elvire bathroom collection.

We've paired beautiful sustainable Tasmanian timbers with sophisticated gunmetal finishes to create a unique collection that is grounded in practical, functional and sustainable design principles.

The Elvire collection includes innovative enamelled steel basins and beautiful timber accents which invite touch and interaction, whilst ensuring the highest level of quality and luxury.

The result is a collection that reflects our unique connection to the Australian environment and Caroma's passion for progressive Australian design.





TASMANIAN OAK

TASMANIAN BLACKWOOD

Created with sustainability in mind

At Caroma we pride ourselves on utilising renewable and recyclable materials to help support a sustainable future.

Our Elvire collection showcases a beautiful selection of locally grown and sustainably sourced Tasmanian timbers, passionately crafted in celebration of Australia's natural environment.

Tasmanian Oak and Tasmanian Blackwood have been selected for their natural beauty and versatility throughout the collection. The Elvire bathroom collection is like no other.





The Elvire range of
vanities and basins have
been *reimagined* to
create a considered and
complete *integrated*
design solution.

Vanities & basins

Featuring your choice of Tasmanian Oak or Tasmanian Blackwood, our vanities in the Elvire collection are crafted from sustainable timbers, manufactured locally in Australia. The premium timbers are finished with a satin seal, with no staining, to accentuate the natural beauty of the product.

The distinct thin edged basins are made with enamelled steel and crafted with precision for complete symmetry and a flawless fit. The range includes a variety of styles and sizes across both vanities and basins.

- Designed and engineered in Australia
- Made with quality hard-wearing enamelled steel
- Available in right or left hand shelf options (vanities and wall basin)
- Includes an integrated shroud to conceal plumbing (vanities and wall basin)
- Includes a spacious and practical drawer with premium soft close runners (vanities)
- Includes an integrated pop down plug and waste
- 400mm width - 10L capacity
- Timber is sealed with a premium two-pack polyurethane finish for durability and water resistance





A highlight in the collection is the *luxurious* overhead rain shower which provides the perfect design match to the basins and bath.

Showers

The enamelled steel shroud of the overhead rain shower might just be the star of the show in the Elvire collection. It's more than just a shower head, it is a design feature of its own.

A gunmetal rail shower with overhead and singular gunmetal handheld shower are also available in this range.

- Designed and engineered in Australia
- Satin gunmetal finish with matching hose (rail shower with overhead and handheld shower)
- Minimalist handheld shower design





The *refined edge*
detail and *high gloss*
finish make the luxurious
freestanding bath a real
standout in the range.

Baths

Considered by many as the ultimate in relaxation, a luxurious freestanding bath will undoubtedly turn your bathroom into your sanctuary.

Our Elvire bath is crafted using solid surface material, meaning it's highly durable, non-porous, and smooth and warm to the touch.

- Designed in Australia
- Featuring a high gloss finish
- Includes an integrated solid surface pop down waste for a seamless look
- 375L capacity
- Overflow not available





The integration of
Tasmanian timbers into the
tapware range exude luxury
and *natural beauty*.

Tapware

Striking gunmetal taps come with a metal knurled detailed handle, or combine with your chosen Tasmanian signature timber handle to create a luxury tapware range like none you've seen before.

Available in a bench or wall mounted mixer as well as a stunning bath filler to complement your Elvire bath.

- Designed and engineered in Australia
- Body constructed from quality hard-wearing brass
- Features progressive cartridge technology for accurate temperate flow and control
- Timber is sealed with a premium two-pack polyurethane finish for durability and water resistance





Caroma Cleanflush® is our most effective and hygienic toilet. Our patented design features *revolutionary* rimless technology that delivers the next generation of toilets: easy to clean and water efficient with *superior* hygiene.



Toilet suites

Every detail has been considered in the Elvire toilet suite range, with gunmetal seat hinges, timber Invisi flush buttons and Caroma's patented Cleanflush® technology.

The range includes both wall hung and wall faced Invisi Series II® as well as a wall faced close coupled option.

- Designed in Australia
- Caroma Cleanflush® – hygienic rimless design
- Includes a quick release soft close seat with hard-wearing PVD finished gunmetal hinges for a consistent design match
- Supplied with Caroma's patented Uni-Orbital® connector for ease of installation, providing superior set-out flexibility during installation





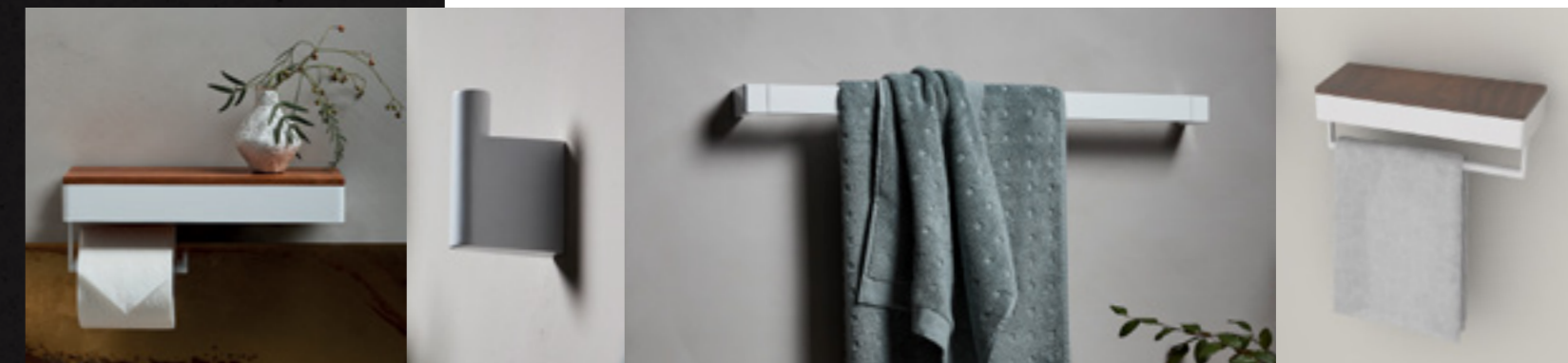
The *crafted timber* details
of the Elvire accessory range
make an impressive addition
to any bathroom.

Accessories

Our Elvire signature sustainable timbers are incorporated throughout this range of essential accessories, making them the ultimate finishing touches to your stunning Elvire-inspired bathroom.

Elvire accessories include toilet roll holder with shelf, towel rail with shelf, hand towel rail with shelf and robe hook.

- Designed in Australia
- Made from hard-wearing brass with a premium high gloss finish
- Timber shelf available in Tasmanian Oak or Tasmanian Blackwood
- Timber is sealed with a premium two-pack polyurethane finish for durability and water resistance





Create your *sanctuary*

	<p>① Elvire Freestanding Bath 1700 CAEL0062W</p> <p>② Elvire Progressive Freestanding Bath Filler – Tasmanian Blackwood Handle CAEL0027DW</p>	 <p>⑨ Elvire Overhead Rain Shower with Shroud CAEL0057GM3A</p>
 <p>③ Elvire 1200 Right Hand Shelf Wall Basin – Tasmanian Blackwood CAEL0025WDW</p>	 <p>⑥ Elvire 400 Left Hand Shelf Wall Basin – Tasmanian Blackwood CAEL0005WDW</p>	 <p>⑩ Elvire Hand Shower CAEL0043GM3A</p> <p>⑪ Elvire Progressive Bath/Shower Mixer – Tasmanian Blackwood Handle CAEL0032DW</p>
 <p>④ Elvire Progressive Basin Mixer – Tasmanian Blackwood Handle CAEL0026DW6A</p>	 <p>⑦ Elvire Invisi Series II® Round Dual Flush Plate & Buttons – Tasmanian Blackwood 237100WDW</p>	 <p>⑫ Elvire Toilet Roll Holder with Shelf – Tasmanian Blackwood CAEL0046DW</p>
 <p>⑤ Elvire Progressive Wall Basin Mixer – Tasmanian Blackwood Handle CAEL0028DW6A</p>	 <p>⑧ Elvire Cleanflush® Invisi Series II® Wall Hung Toilet Suite 847910W</p>	 <p>⑬ Elvire Robe Hook CAEL0064W</p>





Basins & vanities



Elvire 900 Right Hand Shelf Wall Basin - Tasmanian Oak
No taphole CAEL0008WLW \$4,199
1 taphole CAEL0017WLW \$4,199
No overflow
Warranty | 10 year residential, 1 year commercial



Elvire 900 Left Hand Shelf Wall Basin - Tasmanian Oak
No taphole CAEL0007WLW \$4,199
1 taphole CAEL0015WLW \$4,199
No overflow
Warranty | 10 year residential, 1 year commercial



Elvire 1200 Right Hand Shelf Wall Basin - Tasmanian Oak
No taphole CAEL0024WLW \$4,999
1 taphole CAEL0025WLW \$4,999
No overflow
Warranty | 10 year residential, 1 year commercial



Elvire 1200 Left Hand Shelf Wall Basin - Tasmanian Oak
No taphole CAEL0016WLW \$4,999
1 taphole CAEL0023WLW \$4,999
No overflow
Warranty | 10 year residential, 1 year commercial



Elvire 900 Right Hand Shelf Wall Basin - Tasmanian Blackwood
No taphole CAEL0008WDW \$4,199
1 taphole CAEL0017WDW \$4,199
No overflow
Warranty | 10 year residential, 1 year commercial



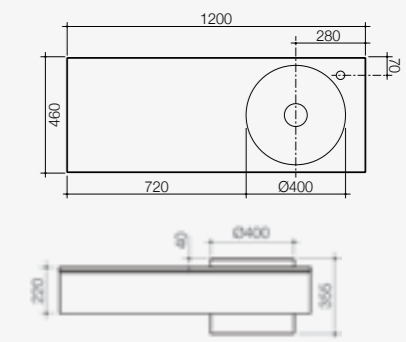
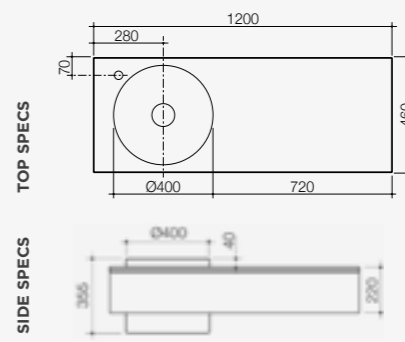
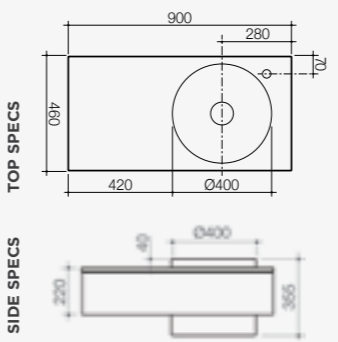
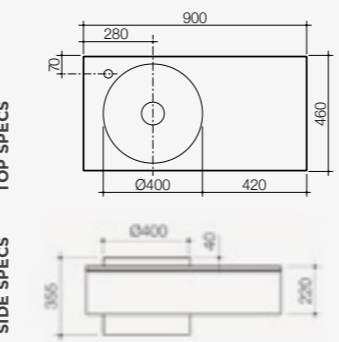
Elvire 900 Left Hand Shelf Wall Basin - Tasmanian Blackwood
No taphole CAEL0007WDW \$4,199
1 taphole CAEL0015WDW \$4,199
No overflow
Warranty | 10 year residential, 1 year commercial



Elvire 1200 Right Hand Shelf Wall Basin - Tasmanian Blackwood
No taphole CAEL0024WDW \$4,999
1 taphole CAEL0025WDW \$4,999
No overflow
Warranty | 10 year residential, 1 year commercial



Elvire 1200 Left Hand Shelf Wall Basin - Tasmanian Blackwood
No taphole CAEL0016WDW \$4,999
1 taphole CAEL0023WDW \$4,999
No overflow
Warranty | 10 year residential, 1 year commercial





Basins & vanities



Elvire 400 Right Hand Shelf Wall Basin – Tasmanian Oak
CAEL0006WLW \$1,699
No overflow
Warranty | 10 year residential, 1 year commercial



Elvire 400 Left Hand Shelf Wall Basin – Tasmanian Oak
CAEL0005WLW \$1,699
No overflow
Warranty | 10 year residential, 1 year commercial



Elvire 400 Right Hand Shelf Wall Basin – Tasmanian Blackwood
CAEL0006WDW \$1,699
No overflow
Warranty | 10 year residential, 1 year commercial



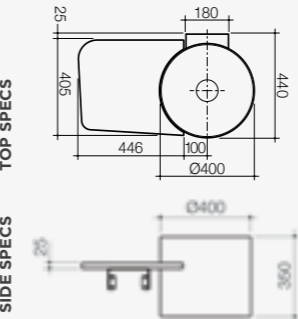
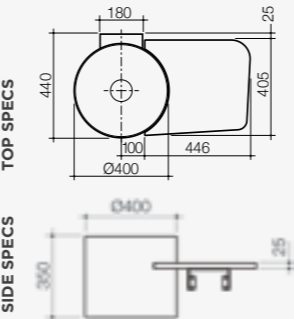
Elvire 400 Left Hand Shelf Wall Basin – Tasmanian Blackwood
CAEL0005WDW \$1,699
No overflow
Warranty | 10 year residential, 1 year commercial



Elvire 400 Wall Basin
CAEL0002W \$1,349
No overflow
Warranty | 10 year residential, 1 year commercial



Elvire 400 Inset Basin
CAEL0001W \$1,029
No overflow
Warranty | 10 year residential, 1 year commercial



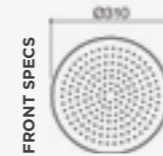


Showers

Elvire Overhead Rain Shower with Shroud

WELS 3 star rated, 9L/min
CAELO057GM3A **\$999**

Warranty | 10 year residential, 7 year commercial



FRONT SPECS

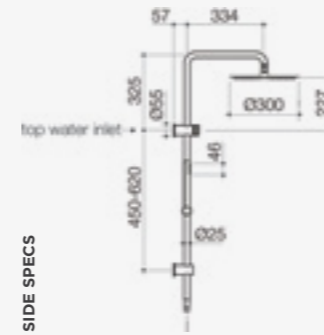


SIDE SPECS

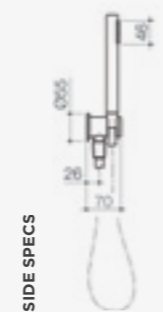
Elvire Rail Shower with Overhead 300mm

WELS 3 star rated, 9L/min
CAELO042GM3A **\$1,199**

Warranty | 10 year residential,
7 year commercial



SIDE SPECS



SIDE SPECS



FRONT SPECS

Elvire Hand Shower

WELS 3 star rated, 9L/min
CAELO043GM3A **\$599**

Warranty | 10 year residential,
7 year commercial



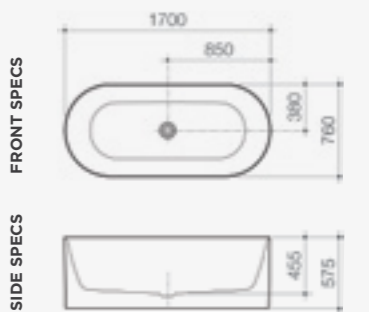
Bath



Elvire Freestanding Bath 1700

CAELO062W **\$4,499**
No overflow

Warranty | 10 year residential and commercial



FRONT SPECS

SIDE SPECS

Tapware



Elvire Progressive Basin Mixer – Tasmanian Oak Handle

WELS 6 star rated, 4.5L/min
CAELO026LW6A **\$899**
Gunmetal handle also included

Warranty | 10 year residential and commercial



Elvire Progressive Basin Mixer – Tasmanian Blackwood Handle

WELS 6 star rated, 4.5L/min
CAELO026DW6A **\$899**
Gunmetal handle also included

Warranty | 10 year residential and commercial



Elvire Progressive Wall Basin Mixer – Tasmanian Oak Handle

WELS 6 star rated, 4.5L/min
CAELO028LW6A **\$949**
Gunmetal handle also included

Warranty | 10 year residential and commercial



Elvire Progressive Wall Basin Mixer – Tasmanian Blackwood Handle

WELS 6 star rated, 4.5L/min
CAELO028DW6A **\$949**
Gunmetal handle also included

Warranty | 10 year residential and commercial



Elvire Basin Outlet 170mm

WELS 6 star rated, 4.5L/min
CAELO030GM6A **\$299**

Warranty | 10 year residential and commercial



Elvire Bath Outlet 205mm

CAELO031GM **\$299**

Warranty | 10 year residential and commercial



Elvire Progressive Bath/Shower Mixer – Tasmanian Oak Handle

CAELO032LW **\$699**
Gunmetal handle also included

Warranty | 10 year residential and commercial



Elvire Progressive Bath/Shower Mixer – Tasmanian Blackwood Handle

CAELO032DW **\$699**
Gunmetal handle also included

Warranty | 10 year residential and commercial



Elvire Progressive Bath/Shower Mixer with Diverter – Tasmanian Oak Handle

CAELO033LW **\$749**
Gunmetal handle also included

Warranty | 10 year residential and commercial



Elvire Progressive Bath/Shower Mixer with Diverter – Tasmanian Blackwood Handle

CAELO033DW **\$749**
Gunmetal handle also included

Warranty | 10 year residential and commercial



Elvire Progressive Freestanding Bath Filler – Tasmanian Oak Handle

CAELO027LW **\$1,999**
Gunmetal handle also included

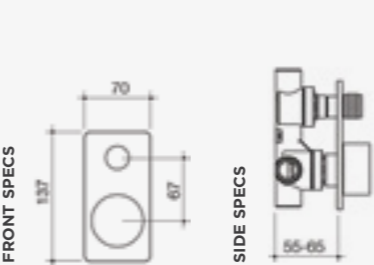
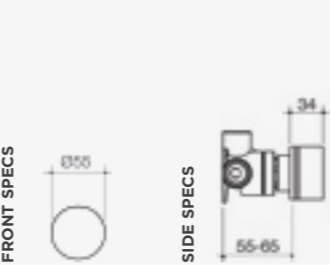
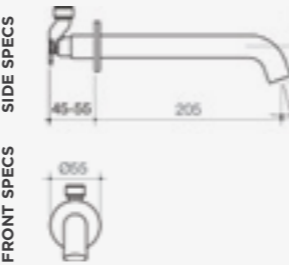
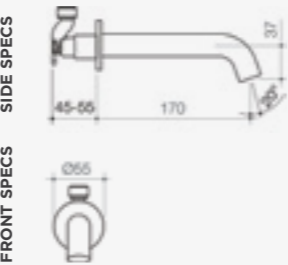
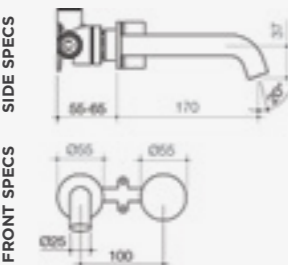
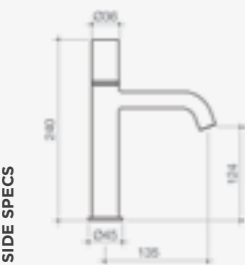
Warranty | 10 year residential and commercial

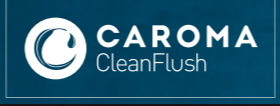


Elvire Progressive Freestanding Bath Filler – Tasmanian Blackwood Handle

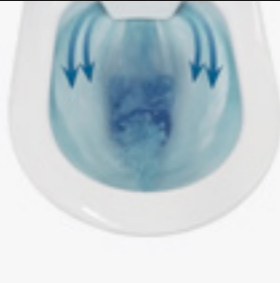
CAELO027DW **\$1,999**
Gunmetal handle also included

Warranty | 10 year residential and commercial





FLOW SPLITTER
Precise flush stream effectively clears the bowl



FLOW CHANNELS
Controlled water flow eliminates splash back



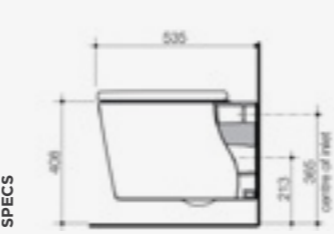
FLOW BALANCER
Powerful flush for whole bowl clean

Toilet suites



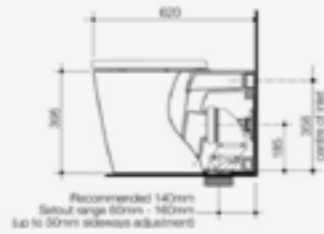
Elvire Cleanflush® Invisi Series II® Wall Hung Toilet Suite

WELS 4 star rated, 4.5/3 (3.5L average flush)
Induct, in ceiling, in wall 847910W **\$1,639**
Undercounter 847920W **\$1,639**
Structural brick wall 847930W **\$1,689**
Invisi Series II® flush buttons sold separately
Warranty | 10 year residential and commercial



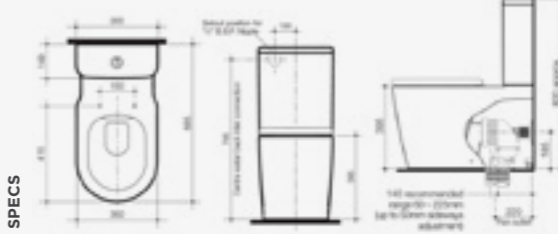
Elvire Cleanflush® Invisi Series II® Wall Faced Toilet Suite

WELS 4 star rated, 4.5/3 (3.5L average flush)
846310W **\$1,599**
Invisi Series II® flush buttons sold separately
Warranty | 10 year residential and commercial



Elvire Cleanflush® Wall Faced Toilet Suite - Back Entry

WELS 4 star rated, 4.5/3 (3.5L average flush)
846210W **\$1,199**
Warranty | 10 year residential and commercial



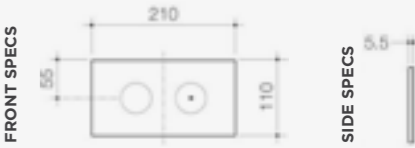
Elvire Invisi Series II® Round Dual Flush Plate & Buttons - Tasmanian Oak

237100WLW **\$399**
Warranty | 1 year residential and commercial



Elvire Invisi Series II® Round Dual Flush Plate & Buttons - Tasmanian Blackwood

237100WDW **\$399**
Warranty | 1 year residential and commercial



Accessories



Elvire Toilet Roll Holder with Shelf – Tasmanian Oak

CAELO046LW **\$359**
Warranty | 5 year residential, 1 year commercial



FRONT SPECS



Elvire Toilet Roll Holder with Shelf – Tasmanian Blackwood

CAELO046DW **\$359**
Warranty | 5 year residential, 1 year commercial



SIDE SPECS



Elvire Hand Towel Rail 300mm with Shelf – Tasmanian Oak

CAELO048LW **\$379**
Warranty | 5 year residential, 1 year commercial



Elvire Hand Towel Rail 300mm with Shelf – Tasmanian Blackwood

CAELO048DW **\$379**
Warranty | 5 year residential, 1 year commercial

FRONT SPECS



SIDE SPECS



Elvire Towel Rail 700mm with 300mm Shelf – Tasmanian Oak

CAELO047LW **\$459**
Warranty | 5 year residential, 1 year commercial



Elvire Towel Rail 700mm with 300mm Shelf – Tasmanian Blackwood

CAELO047DW **\$459**
Warranty | 5 year residential, 1 year commercial

FRONT SPECS



SIDE SPECS







With over 75 years of experience, Caroma believes that quality bathrooms have to be a balance of form, function and looks. Bathrooms are spaces where we put a personal touch on our homes. Caroma enables you to enjoy bathroom experiences that both complement and elevate your lifestyle, from an energising morning start to an indulgent, relaxing moment of luxury.

Designed for Australians and New Zealanders from all walks of life with different tastes and needs, Caroma's wide range of classic to artisanal styles, smart designs and sustainable innovations provide you with everything you need to create the *sanctuary of your dreams.*

www.caroma.com.au | www.caroma.co.nz

© Copyright 2019. Caroma Industries Ltd. ABN 35 000 189 499. All rights reserved. Material and design specifications subject to change without notice. Product colour reproduction is as near to actual product colour as production methods allow. Warning: Products in this brochure are the subject of registered designs and patents. ® is a registered trademark of Caroma Industries. This brochure relates to Australian products only and some product, design or specifications may differ in other countries.