

Fire Rated Doorsets System Guide



FIRE RATED DOORSETS SYSTEM GUIDE

Issue: 16-06-2010

What are Fire Rated Doorsets?

A Fire Rated Doorset consists of a door leaf, door frame, associated hardware such as closers, handles, locks, vision panels, air grilles (etc), and is defined under Australian Standard AS1905.1. This standard also defines the installation and tagging features that are required for the doorset to be deemed a 'Fire Rated Doorset', and in particular stipulates that a fire rated doorset must be self closing and self latching. The term 'FIRE DOOR' is the common abbreviation of 'FIRE DOOR SET', and includes all of the requirements stipulated in AS1905.1.

The fire rated door leaves detailed in this manual are only one component of a fire rated doorset, and will only meet the requirements set out in AS1905.1 when they are installed correctly, incorporate approved hardware, and are self closing and self latching, and fitted into a tested and approved wall system. If any of the above requirements are not met, the door can not be tagged as a certified fire rated doorset.

Range of Pyropanel Fire Rated Doorsets

Pyropanel Developments has been developing and manufacturing fire rated doors for 30 years, and has developed a huge range of fire rated doorsets to meet most requirements set out in the numerous Australian and International Standards.

The range includes:

- Timber faced side hung fire doorsets for internal and external applications, available in a multitude of finishes and fire ratings up to 4hrs,
- Sliding fire doors,
- Steel faced or fully clad steel fire doors,
- Double acting fire doors,
- Fully glazed timber fire doors,
- Fully glazed steel fire doors.

Pyropanel also offer a large range of doorsets that combine fire resistance with other tested and certified features such as smoke leakage (*see life safety doors*), bullet and intruder resistance (*see special purpose doors*), acoustic resistance (*see acoustic doors*), and special high performance finishes such as hospital grade stainless steel and mirror finishes.

Installation of Fire Rated Doorsets

Pyropanel Fire Doors have been tested and approved with a wide range of the most commonly occurring wall types, as well as a large range of the less common wall types. These include masonry walls, brick walls, timber and steel stud walls using fire rated plasterboard, aerated masonry bricks and panels. For details on installation, please refer to frames and building in details, or contact Pyropanel Development for more information.

Many Pyropanel Fire Doorsets have been in active service for in excess of 20 years.

Advantages and Features

Because Pyropanel develop the most technologically advanced fire doorsets available, there are numerous features of a Pyropanel fire door that provide significant advantages:

Lightweight materials - Pyropanel Fire doors can weigh only half as much as conventionally constructed fire doors. This will reduce the amount of time and effort required to hang the doors, will reduce maintenance costs due to dropping on hinges, and increase the life of the door.

Trimming - Pyropanel Fire door leaves can be readily trimmed on site to facilitate easy installation to existing approved door frames. In extreme cases, rails and/or stiles can be replaced using approved methods and materials (contact your licensed Pyropanel Agent).

Fixing of hardware - Pyropanel's latest range of hinged fire door leaves, made from environmentally sound "Pandora" core do not contain steel components, enabling hardware to be securely fixed to any part of the door leaf.

Bond Strength - facings and edges are bonded to the core using melamine-based resin adhesive

Certification

Pyropanel Fire Doors are fully tested and certified to a variety of countries' standards, including:

AS 1530.4	1997	ISO 834	1999
AS 1905.1	1997	ISO 3008	1976
AS 4072.1	1992	NZS 4232	1984
SABS 0177.2	1981	BS 476.20/22	
SABS 1253	2003	Chinese GB 7633	1987
SS332	2000	Chinese GB 12955	1991
		Chinese GB 14101	1993

Please note, for a detailed list of the range of products approved for countries outside Australian and New Zealand, please contact Pyropanel or your local licensed agent.

Summary

- Multiple Fire Resistance Levels available
- Huge range of finishes, including:
 - Ply, MDF,
 - Steel, stainless steel, zinc,
 - Routed faces and mouldings,
 - Mirror,
 - Melamines and laminates.
- Available with either Exposed or Concealed seal arrangements, by Euroseal®, Raven, Lorient & Hafele
- Tested and certified Acoustic Ratings from 27 - 46Rw



Pyropanel Developments Pty Ltd
122-124 Beresford Rd, Lilydale, VIC, 3140
Ph: (03) 9739 3100 Fax: (03) 9739 3115
Email: sales@pyropanel.com.au
Web: www.pyropanel.com.au

Distributed by:

FIRE RATED DOORSETS SYSTEM GUIDE

Issue: 16-06-2010

Selection Guide

Model	FRL	Leaf Thickness	Facing	Maximum Leaf size - Single (mm)	Maximum Leaf size - Pair (mm)	Tech Sheet
-------	-----	----------------	--------	---------------------------------	-------------------------------	------------

Timber faced Side hung Fire Door Leaves

PFD030-38	-/30/30	38mm	Ply/MDF/Steel/other	2420 x 1020 or 2200 x 1120	N/A	FD-01
PFD030-48	-/30/30	48mm	Ply/MDF/Steel/other	3000 x 1500	3000 x 1500 / 1500	FD-01
PFD060-38	-/60/30	38mm	Ply/MDF/Steel/other	2350 x 1020	N/A	FD-01
PFD060-48	-/60/30	48mm	Ply/MDF/Steel/other	3000 x 1500	3000 x 1500 / 1500	FD-01
PFD120-38	-/120/30	38mm	Ply/Steel/other	2350 x 1020	N/A	FD-01
PFD120-48	-/120/30	48mm	Ply/Steel/other	3000 x 1500	3000 x 1350 / 1350	FD-01
PFD240-48	-/240/30	48mm	Ply/Steel/other	3000 x 1500	3000 x 1200 / 1200	FD-01

Steel Fire Door Leaves

PFDS030-38	-/30/30	38mm	Steel/other	2420 x 1020 or 2200 x 1120	N/A	FD-02
PFDS030-48	-/30/30	48mm	Steel/other	3000 x 1500	3000 x 1500 / 1500	FD-02
PFDS060-38	-/60/30	38mm	Steel/other	2350 x 1020	N/A	FD-02
PFDS060-48	-/60/30	48mm	Steel/other	3000 x 1500	3000 x 1500 / 1500	FD-02
PFDS120-38	-/120/30	38mm	Steel/other	2350 x 1020	N/A	FD-02
PFDS120-48	-/120/30	48mm	Steel/other	3000 x 1500	3000 x 1350 / 1350	FD-02
PFDS240-48	-/240/30	48mm	Steel/other	3000 x 1500	3000 x 1200 / 1200	FD-02

Sliding Fire doorsets

PSFD120-65	-/120/60	65mm	Steel / Ply over	4000(h) x 2600(w) or 3500(h) x 3000(w)	4000(h) x 2600(w) or 3500(h) x 3000(w)	FD-03
PSFD120-80	-/120/120	80mm	Steel / Ply over	5000(h) x 6000(w) [#]	5000(h) x 6000(w) [#]	FD-03
PSFD240-80	-/240/120	80mm	Steel / Ply over	5000(h) x 6000(w) [#]	5000(h) x 6000(w) [#]	FD-03

Double Acting Fire Doors

PDAFD060-48	-/60/30	48mm	Ply/Steel/other	2400 x 1200	2400 x 1100 / 1100	FD-04
PDAFD120-48	-/120/30	48mm	Ply/Steel/other	2400 x 1200	2400 x 1100 / 1100	FD-04

Glass Fire Doors

PG1FD060-52	-/60/30	52mm	Timber with 1/2 glass	2400 x 920 or 2100 x 1200	2400 x 920 or 2100 x 1200	FD-05
PG2FD060-54	-/60/30	54mm	Timber with full glass	2700 x 1050 or 2100 x 1200	N/A	FD-05
PGMFD060-65	-/60/30	65mm	Steel with full glass	2400 x 1200	2400 x 1200 / 1200	FD-06
PGSD30S or PGSD30P	-/30/-	65mm	Steel with full glass (sliding)	2700 x 1405	2700 x 1405 / 1405	FD-09

Continued over page

- Please refer to the Tech Sheet indicated for details on the particular door model required.
- Please refer to the Pyropanel Website for the latest technical information.
- N/A indicates that this combination was not available at date of publication - please check with Pyropanel for latest approvals.
- If you do not find a product to suit your requirements, please contact Pyropanel Developments for the latest information on our comprehensive range of Passive Fire Protection Products.



Pyropanel Developments Pty Ltd
 122-124 Beresford Rd, Lilydale, VIC, 3140
 Ph: (03) 9739 3100 Fax: (03) 9739 3115
 Email: sales@pyropanel.com.au
 Web: www.pyropanel.com.au

Distributed by:

FIRE RATED DOORSETS SYSTEM GUIDE

Selection Guide continued

Issue: 16-06-2010

Model	FRL	Leaf Thickness	Facing	Maximum Leaf size - Single (mm)	Maximum Leaf size - Pair (mm)	Tech Sheet
Fire Door leaves with panel over and no transom						
FDPO-NT	-/120/30	48mm	Ply/MDF/Steel/other	3600 x 1200	NA	FD-07
Fire Door leaves with panel over with transom						
FDPO-WT-120-30	-/120/30	48mm	Ply/MDF/Steel/other	3600 x 1200	3600 x 1200 / 1200	FD-08
FDPO-WT-240-30	-/240/30	48mm	Ply/MDF/Steel/other	3350 x 1200	3350 x 1200 / 1200	FD-08
FSC certified fire and non-fire rated leaves						
PFD-FSC-0-38	-/-/-	38	Ply/MDF/Steel/other	Any	Any	FD-11
PFD-FSC-0-48	-/-/-	48	Ply/MDF/Steel/other	Any	Any	FD-11
PFD-FSC-030-38	-/30/30	38	Ply/MDF/Steel/other	2420 x 1020 or 2200 x 1120	N/A	FD-11
PFD-FSC-030-48	-/30/30	48	Ply/MDF/Steel/other	3000 x 1500	3000 x 1500 / 1500	FD-11
PFD-FSC-060-38	-/60/30	38	Ply/Steel/other	2350 x 1020	N/A	FD-11
PFD-FSC-060-48	-/60/30	48	Ply/Steel/other	3000 x 1500	3000 x 1500 / 1500	FD-11
PFD-FSC-120-38	-/120/30	38	Ply/Steel/other	2350 x 1020	N/A	FD-11
PFD-FSC-120-48	-/120/30	48	Ply/Steel/other	3000 x 1500	3000 x 1350 / 1350	FD-11
PFD-FSC-240-48	-/240/30	48	Ply/Steel/other	3000 x 1500	3000 x 1200 / 1200	FD-11

Other Important Tech Sheets

Description	Section	Tech Sheet
Meeting stile details for pairs	Accessories	ACC-08
LP design detail	Fire Doors	TBA
Vision Panel detail	Accessories	ACC-07
Building in details for frames	Building-in Details	(Multiple)
Fire Rated Frame Profiles	Building-in Details	FRAME-02
Euroseal Fire Rated Frame Profile	Building-in Details	FRAME-03
Timber Fire Rated frame details	Building in Details	FRAME-04
MDF Fire Rated frame details	Building in Details	FRAME-05
Euroseal smoke seal details	Accessories	ACC-06
Fire Rated Grilles	Accessories	ACC-01
Auto latch for fire doors	Accessories	ACC-02
Intumescent door seals	Accessories	ACC-03
Roller latch for fire doors	Accessories	ACC-04
Approved hardware list	Accessories	ACC-09
Insulated and non insulated fixed side lites and windows	Fire Rated Glazing	(Multiple)

- Please refer to the Tech Sheet indicated for details on the particular door model required.
- Please refer to the Pyropanel Website for the latest technical information.
- N/A indicates that this combination was not available at date of publication - please check with Pyropanel for latest approvals.
- If you do not find a product to suit your requirements, please contact Pyropanel Developments for the latest information on our comprehensive range of Passive Fire Protection Products.



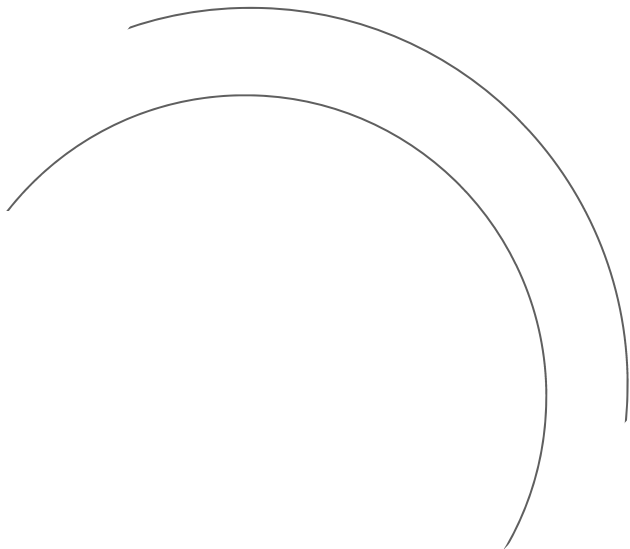
Pyropanel Developments Pty Ltd
 122-124 Beresford Rd, Lilydale, VIC, 3140
 Ph: (03) 9739 3100 Fax: (03) 9739 3115
 Email: sales@pyropanel.com.au
 Web: www.pyropanel.com.au

Distributed by:

Availability

All Pyropanel products are available throughout Australia and various other countries through a network of licensed manufacturers and distributors. For a current contact list, please contact Pyropanel Developments or visit our website at www.pyropanel.com.au.

[Pyropanel > Fire Doors > Smoke Doors > Life Safety Doors > Fire Rated Glazing > Passive Products > Special Purpose Doors](#)



PYROANEL
DEVELOPMENTS PTY LTD

Melba Industrial Park
122-124 Beresford Rd
Lilydale (P O Box 559)
Victoria, 3140, Australia

T +61 3 9739 3100
F +61 3 9739 3115
E sales@pyropanel.com.au
W www.pyropanel.com.au



FIRE DOOR LEAVES

Timber faced fire door leaves

30min, 1hr, 2hr, 4hr

TECH SHEET: FD-01

Issue: 11-07-11

**Timber Fire Door Leaves, side hung,
with optional facings and thicknesses**

DESCRIPTION

Timber fire door leaves utilising the latest Pyropanel fire resistant door core and design technology, these doors are fully tested and certified to AS1530.4 and AS1905.1, and are available in a variety of sizes and finishes in 30 minute, 1 hour, 2 hour and 4 hour fire resistance levels.

APPLICATIONS

Ideal for most applications that require a certified fire door set especially in residential complexes, hospitals, schools, public buildings etc.

FEATURES

- For use in 1hr and 2hr plasterboard stud walls, all fire rated masonry walls, gypsum block walls, aerated concrete blocks and wall panels, Insulboard panel walls, Rokcore and Paroc (refer Refer to Pyropanel if your wall type is not listed).
- Available in pairs or singles, and with panels over.
- 38mm and 48mm (nom) thickness - other thicknesses available on request.
- Approx weight
 - 48mm - 22kg/m².
 - 38mm - 19kg/m².
- 30 minute and 1 hour door leaves are of 'no metal' construction type, allowing for easy hanging and lock preparation (depending on leaf dimensions).
- Fully tested and certified up to -/240/30 FRL.
- Variety of meeting stiles for pair configurations.
- Suitable for Pyropanel Pressed Metal Door Frames or Pyropanel Fire Rated Timber Door Frames.
- Also suitable for modified non rated door frames - *contact Pyropanel for more information.*
- MDF facing up to one hour, Ply facing up to 4 hours.
- Edge Details:
 - 10mm timber concealed or exposed.
 - Steel channels or flats.
 - Aluminium anodised.
- Recommended hinge configuration:
 - up to 2040 x 920 = 3 hinges.
 - up to 2400 x 1020 = 4 hinges.
 - up to 3000 x 1500 = 5 hinges.

OPTIONAL EXTRAS

- Veneer, steel, aluminium, PVC, laminate, stone, glass, and routed and/or applied beading facings.
- Vision panels up to 300 x 200 or 600 x 100mm - (Glass fire doorsets up to -/60/30 in pairs and singles available - Refer to *Glass Fire Doors & Fire Rated Glazing*).
- Kick panels of stainless steel to selected height.
- Smoke seals, viewing lens, electric strikes and locks, panic bars, magnetic hold open devices, etc, are all optional hardware items - Refer to Pyropanel hardware tech sheet for the latest edition of the approved hardware, or contact Pyropanel for any items that are not listed.
- Pre-hung option available for all fire ratings.
- Panel over with or without transom (Refer transom panel Tech sheet for more information).
- Many other testing standards are approved - refer Pyropanel for more information.
- Also available as 2 hour rated double acting fire doorsets - Refer to *Pyropanel Double Acting fire door leaves*.
- Models up to 1 hour also available with certified smoke leakage data - Refer to *Pyropanel Life Safety Doors*.

MODELS AVAILABLE

Model	FRL	Thick-ness	Max Leaf size - Single	Max Leaf size - Pair
PFD030-38	-/30/30	38	2420 x 1020 or 2200 x 1120	N/A
PFD030-48	-/30/30	48	3000 x 1500	3000 x 1500/1500
PFD060-38	-/60/30	38	2350 x 1020	N/A
PFD060-48	-/60/30	48	3000 x 1500	3000 x 1500/1500
PFD120-38	-/120/30	38	2350 x 1020	N/A
PFD120-48	-/120/30	48	3000 x 1500	3000 x 1350/1350
PFD240-48	-/240/30	48	3000 x 1500	3000 x 1200/1200

HOW TO SPECIFY

"Eg. Door to be a Pyropanel PFD060-48 Fire Rated Door, 48mm thick, -/60/30 FRL, Ply face*, mounted in Pyropanel PMDF / Pyropanel Fire rated timber door frame*, with the following options: (eg, vision panels, kick panels, etc*),*

* denotes example - delete, change or specify as required.



Pyropanel Developments Pty Ltd
122-124 Beresford Rd, Lilydale, VIC, 3140
Ph: (03) 9739 3100 Fax: (03) 9739 3115
Email: sales@pyropanel.com.au
Web: www.pyropanel.com.au

Distributed by:

FIRE DOOR LEAVES

Steel fire door leaves

30min, 1hr, 2hr, 4hr

TECH SHEET: FD-02

Issue: 11-07-11

**Steel Fire Door Leaves, side hung,
with optional facings and thicknesses**

DESCRIPTION

Steel Fire door leaves utilising the latest Pyropanel fire resistant door core and design technology, these doors are fully tested and certified to AS1530.4 and AS1905.1, and are available in a variety of sizes and finishes in 30 minute, 1 hour, 2 hour and 4 hour fire resistance levels.

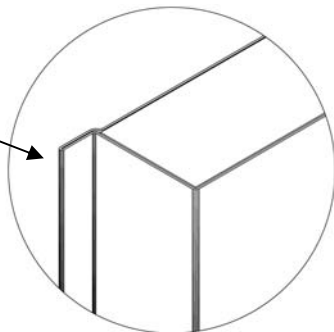
APPLICATIONS

Ideal for most applications that require a certified steel clad fire door set especially in hospitals, schools, public buildings, shopping centres, factories, warehouses, etc.

FEATURES

- Utilise the revolutionary 'LP' design door skin design on most models, which provides a smooth finish along both stiles of the door with an optional integrated security lip (refer LP design tech sheet for more information).
- 0.8mm (nominal) galvanised facings as standard (other thicknesses available).
- For use in plasterboard stud walls, fire rated masonry walls, Gypsum block walls, aerated concrete blocks and wall panels, Rokcore and Paroc. Refer to Pyropanel if your wall type is not listed.
- Available in pairs or singles, and with panels over.
- 38mm and 48mm (nom) thickness - other thicknesses available on request.
- Fully tested and certified up to -/240/30 FRL.
- Variety of meeting stiles for pair configurations.
- Suitable for Pyropanel Pressed Metal Door Frames.
- Edge detail: flush finish 'LP' design or channel capped.
- Recommended hinge configuration:
 - up to 2040 x 920 = 3 hinges
 - up to 2400 x 1020 = 4 hinges
 - up to 3000 x 1500 = 5 hinges
 - continuous (piano) hinges available

Optional Integrated Security Lip on LP design door skin



OPTIONAL EXTRAS

- Stainless Steel facing.
- Channel and applied steel facing design available for larger sizes than listed below.
- Vision panels up to 300 x 200 or 600 x 100mm.
- Smoke seals, viewing lens, electric strikes and locks, panic bars, magnetic hold open devices, etc, are all optional hardware items - Refer to Pyropanel hardware tech sheet for the latest edition of the approved hardware, or contact Pyropanel for any items that are not listed.
- Pre-hung option available for all fire ratings.
- Panel over with transom (Refer *Transom panel Tech sheet* for more information).
- Many other international testing standards are approved - refer Pyropanel for more information.
- Bullet resistance (Refer to *Pyropanel Special Purpose Doors*).
- Steel Acoustic doors are available (Refer to *Pyropanel Acoustic Doors*).

MODELS AVAILABLE

Model	FRL	Thick ness	Max Leaf size - Single	Max Leaf size - Pair
PFDS030-38	-/30/30	38	2420 x 1020 or 2200 x 1120	N/A
PFDS030-48	-/30/30	48	3000 x 1500	3000 x 1500/1500
PFDS060-38	-/60/30	38	2350 x 1020	N/A
PFDS060-48	-/60/30	48	3000 x 1500	3000 x 1500/1500
PFDS120-38	-/120/30	38	2350 x 1020	N/A
PFDS120-48	-/120/30	48	3000 x 1500	3000 x 1350/1350
PFDS240-48	-/240/30	48	3000 x 1500	3000 x 1200/1200

HOW TO SPECIFY

"Eg, Door to be a Pyropanel PFDS060-48* Steel Fire Rated Door, 48mm thick, -/60/30 FRL, Zinc plated*, mounted in Pyropanel PMDF door frame*, with the following options: (eg, vision panels, kick panels, etc*),

* denotes example - delete or change or specify as required



Pyropanel Developments Pty Ltd
122-124 Beresford Rd, Lilydale, VIC, 3140
Ph: (03) 9739 3100 Fax: (03) 9739 3115
Email: sales@pyropanel.com.au
Web: www.pyropanel.com.au

Distributed by:

FIRE DOOR LEAVES

Sliding fire doors

2hr and 4hr

TECH SHEET: FD-03

Issue: 27-05-2010

Sliding Fire Doorsets, with optional facings and thicknesses

Page 1 of 3

DESCRIPTION

Sliding Fire doorsets consisting of door leaf, and associated track and counterweights with steel facings, available in 2 hours and 4 hours of certified fire resistance.

APPLICATIONS

Ideal for applications that require a certified sliding fire door especially in hospitals, schools, public buildings, shopping centres, factories, warehouses, etc.

FEATURES

- Protection of openings in 2hr and 4hr walls.
- Facing - 1.0mm zincanneal sheet steel as standard, alternative of 4mm decorative fire retardant chemical treated plywood available.
- All doors have steel channels to protect edge of door leaves.
- Available in singles, two part, or bi-parting.
- Maximum size, 2hr rating (-/120/30) & 4 hr rating (-/240/30) refer to Table *Models Available* on Page 3.
- Low weight to rating ratio - approx weight:
 - 65mm timber faced - 45kg/m²
 - 65mm steel clad - 48kg/m²
 - 80mm steel clad - 55kg/m²
- Can be manufactured in sections and assembled on site for easier transport and handling.
- Strong inner metal frame construction ensures long service life.
- Excellent insulation and sound reducing properties.
- May be face of wall or cavity mounted.

TRACK CONFIGURATIONS

- Henderson 301 for doors up to 450kg per leaf, approx 8m² (see *Henderson 450 system*, www.hendersonrmd.com.au).
- Henderson 305 for doors up to 700kg per leaf, approx 13m² (see *Henderson 700 system*).
- Henderson 307 for doors up to 2000kg per leaf, approx 36m² (see *Henderson 2000 system*).

DETAILS

- All sliding fire doors must overlap top and both sides of opening by 75mm.
- Wall surfaces along the travel should be level with a maximum recommended tolerance of 5mm.
- Maximum clearance between door and floor should be 10mm.
- Ensure no wall obstructions along the distance of travel.
- Allow 250mm clear wall area for counter-weight case.

STANDARD HARDWARE

- Track and brackets for wall mounting.
- 2 hangers per leaf
- Channel Section floor guide.
- Fusible link activated closing on wire rope and pulley system.
- Counterweight system allowing free-flow operation.
- Flush mounted door pulls.
- Galvanised steel wall mounted door binders to leading edge.
- Indicator arrow on both faces to indicate open direction.
- Standard specification excludes electromagnetic hold open device, smoke detectors, warning signs, battery back up and sirens, as typically required by BCA clause C3.6.
- *Purchaser should always confirm with agent to confirm specific hardware inclusions and exclusions.*

OPTIONAL EXTRAS

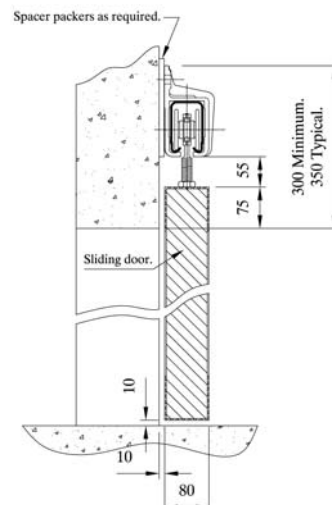
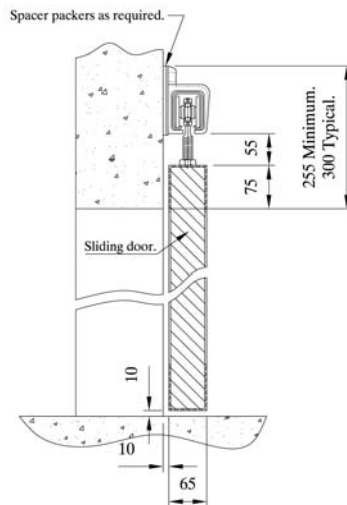
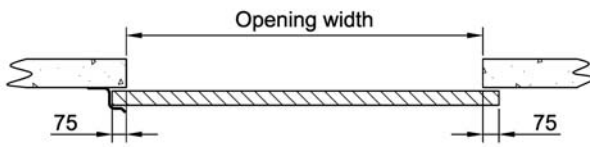
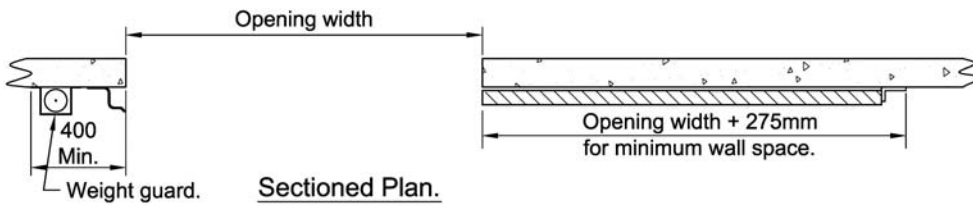
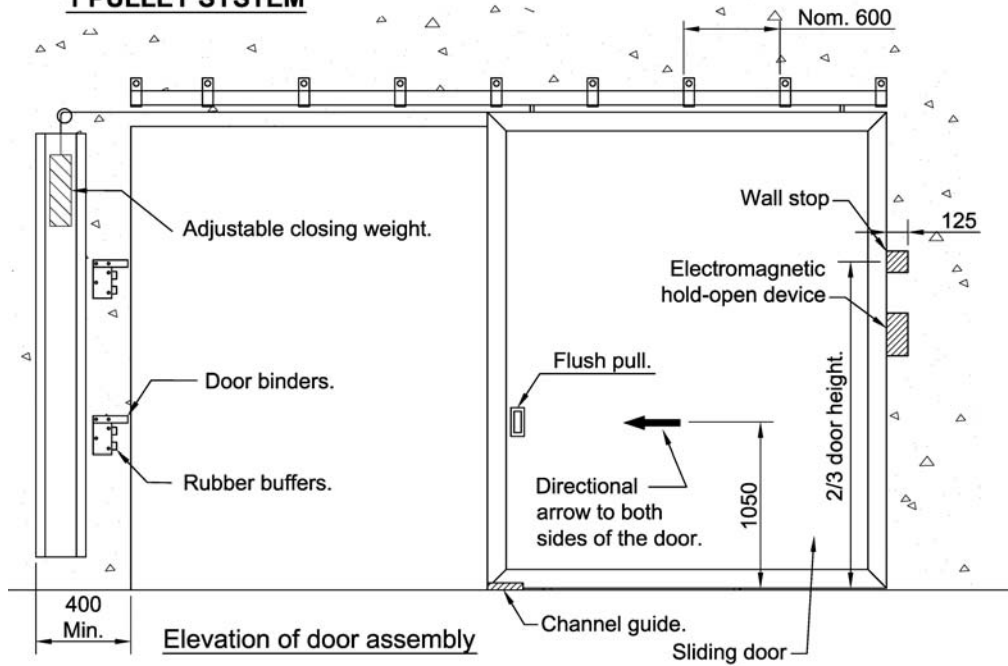
- Stainless Steel, Timber or Aluminium cladding.
- Vision panels.
- Wicket (access) door up to 1830 x 750, located 300mm from bottom of slider (note: Wicket door is an access door only, and should not be used for emergency access).
- Acoustic performance calculations.
- Door may also be held open by magnetic hold-open units, which are wall mounted and have automatic release by smoke or heat detectors.
- Speed control device.
- Fully insulated models with 120 minute insulation rating available on request.

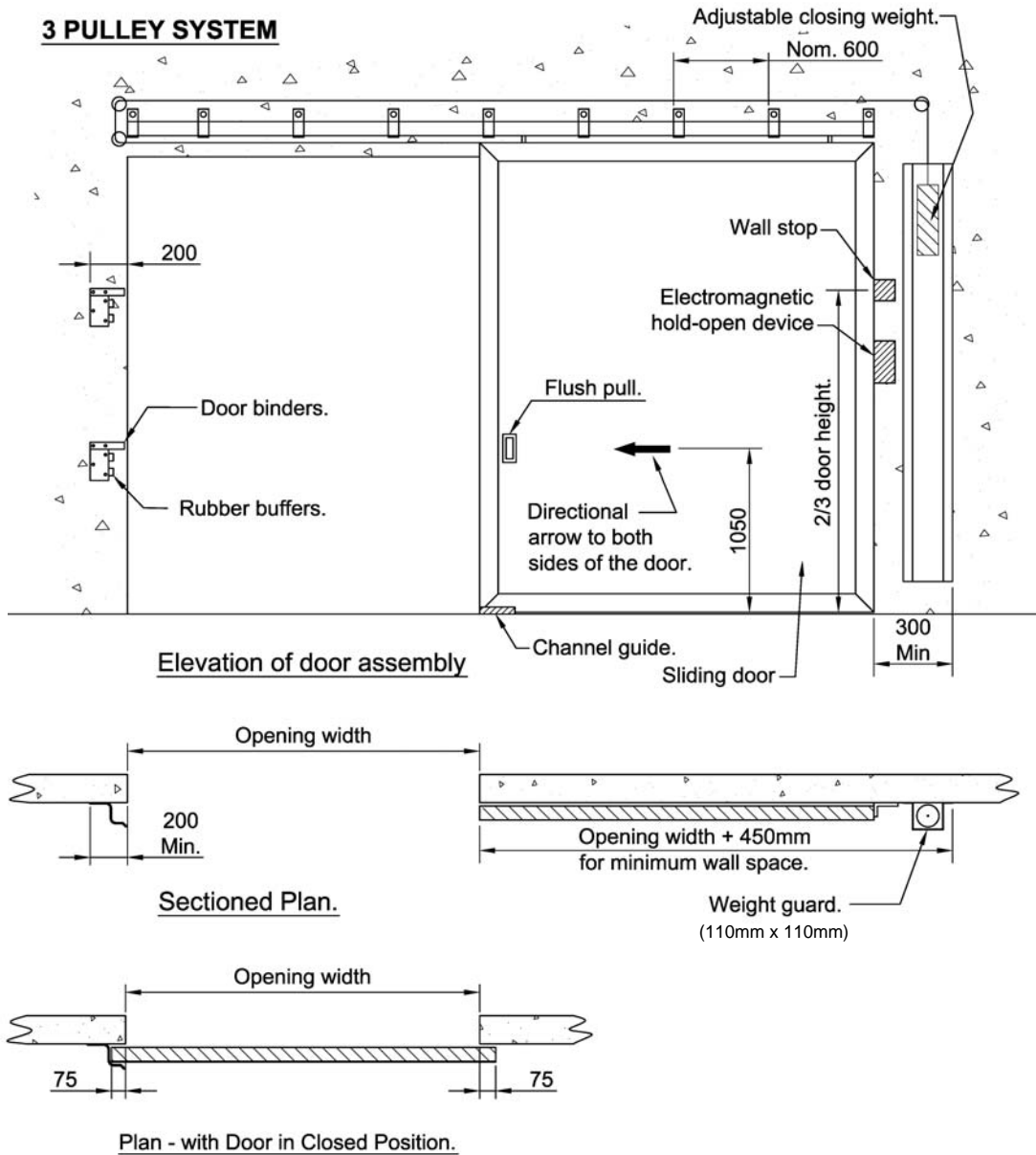


Pyropanel Developments Pty Ltd
122-124 Beresford Rd, Lilydale, VIC, 3140
Ph: (03) 9739 3100 Fax: (03) 9739 3115
Email: sales@pyropanel.com.au
Web: www.pyropanel.com.au

Distributed by:

1 PULLEY SYSTEM





MODELS AVAILABLE

Model	FRL	Thick ness (mm)	Max Leaf size - Single (mm)	Max Leaf size - Pair (mm)
PSFD120-65	-/120/30	65	4000(h) x 2600(w) or 3500(h) x 3000(w)	4000(h) x 2600(w) or 3500(h) x 3000(w)
PSFD120-80	-/120/30	80	5000(h) x 6000(w) [#]	5000(h) x 6000(w) [#]
PSFD240-80	-/240/30	80	5000(h) x 6000(w) [#]	5000(h) x 6000(w) [#]

HOW TO SPECIFY

Eg, "Door to be a Pyropanel PSFD120-80 Metal clad Sliding Fire Rated Door, 80mm thick, -/120/30 FRL, Zinc plated*, including track, fittings, fusible link and counterweight closing system*, with the following options: (eg, vision panels, kick panels, wicket door, etc*),

* denotes example - delete or change or specify as required

[#] Max height 5m, Width can be increased provided the area of the door leaf does not exceed 30m².
Note: Higher insulation models available on request



Pyropanel Developments Pty Ltd
122-124 Beresford Rd, Lilydale, VIC, 3140
Ph: (03) 9739 3100 Fax: (03) 9739 3115
Email: sales@pyropanel.com.au
Web: www.pyropanel.com.au

Distributed by:

FIRE DOOR LEAVES

Double acting fire door leaves

1hr & 2hr

TECH SHEET: FD-04

Issue: 26-05-2010

Double acting Timber Fire Door Leaves, one and two hour fire rated

DESCRIPTION

Timber Fire door leaves utilising the latest Pyropanel fire resistant door core and design technology, these doors are fully tested and certified to AS1530.4 and AS1905.1, and have the benefit of a double action swinging mechanism.

APPLICATIONS

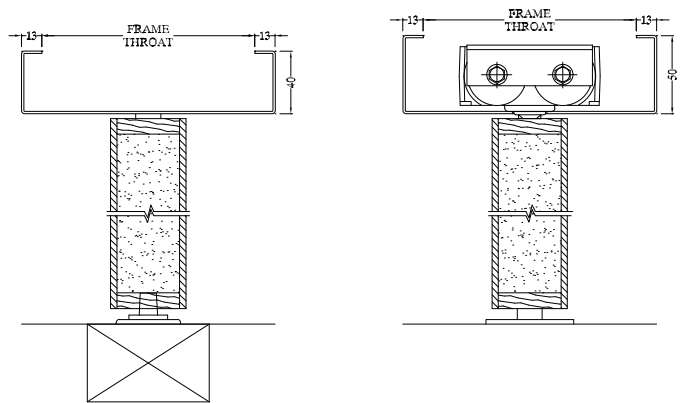
Ideal for heavy traffic areas where two way swing is an important function, and where fire resistance of up to 2 hours is required. Typical installations include hospitals, public buildings, corridors, nursing homes, schools, etc.

FEATURES

- For use in 1hr and 2hr plasterboard stud walls, fire rated masonry walls, gypsum block walls, aerated concrete blocks and wall panels. Refer to Pyropanel if your wall type is not listed.
- Available in pairs or singles.
- 48mm (nom) thickness.
- Approx weight (ply wood faced): 22kg/m².
- Fully tested and certified up to -/120/30 FRL.
- Special meeting stiles incorporating extruded aluminium section with integrated intumescent smoke seals.
- Suitable for Pyropanel Pressed Metal Door Frames designed specifically for double acting doors, available in flat faced or concave (please specify desired finish)
- Ply faces.
- Can be fitted with either floor springs or transom (overhead) closers.

OPTIONAL EXTRAS

- Veneer, steel, aluminium, PVC or laminate facings
- Vision panels up to 300 x 200 or 600 x 100.
- Kick Panels of Stainless Steel, Acrovyn, Kydex, etc, to selected height
- Other testing standards are approved - refer Pyropanel for more information.
- Smoke seals are not approved for head of door.



Typical head and floor section detail.

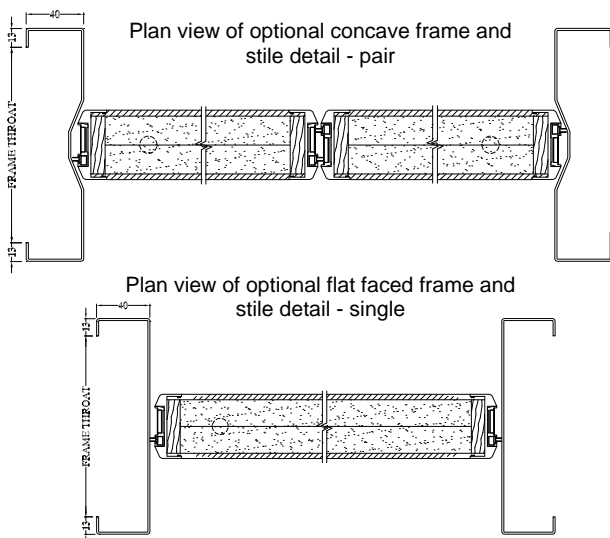
MODELS AVAILABLE

Model	FRL	Thick-ness	Max Leaf size - Single	Max Leaf size - Pair
PDAFD060-48	-/60/30	48	2400 x 1200	2400 x 1200/1200
PDAFD120-48	-/120/30	48	2400 x 1200	2400 x 1200/1200

HOW TO SPECIFY

EG, "Door to be a Pyropanel PDAFD060-48 Double Acting Fire Rated Door, 48mm thick, -/60/30 FRL, Ply face*, mounted in special Pyropanel Pressed Metal Door Frame with flat* / concave* finish, with the following options: (eg, vision panels, kick panels, etc*).

* denotes example - delete or change or specify as required



Pyropanel Developments Pty Ltd
 122-124 Beresford Rd, Lilydale, VIC, 3140
 Ph: (03) 9739 3100 Fax: (03) 9739 3115
 Email: sales@pyropanel.com.au
 Web: www.pyropanel.com.au

Distributed by:

FIRE DOOR LEAVES

Timber glass fire doors

TECH SHEET: FD-05

Issue: 03-08-2010

Glass fire doors with timber edges, available in half and full lites, singles & pairs, -/60/30.

DESCRIPTION

Glass and Timber Fire door leaves utilising the latest Pyropanel fire resistant door core and design technology combined with Pilkington insulating glass, these doors are fully tested and certified to AS1530.4 and AS1905.1, and are available in a variety of sizes and finishes for 1 hour fire resistance levels.

APPLICATIONS

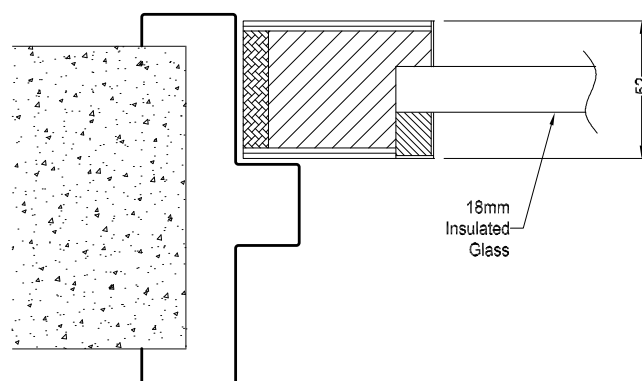
Ideal for most applications that require a certified fire door with the added safety and benefits of fire resistant glass, especially in hospitals, schools, car parks, shopping centres, offices, residential complexes, public buildings etc.

FEATURES

- Fully tested and certified for -/60/30 FRL.
- 1/2 lite or full lite configurations with std designs available
- For use in plasterboard stud walls & Masonry walls Refer to Pyropanel if your wall type is not listed.
- Paint grade Ply facings as standard.
- 1/2 lite available in pairs, full lite in singles only.
- Incorporates 18mm Pilkington Pyrostop™ Fire rated glass with A-class impact resistance.
- Suitable for Pyropanel Pressed Metal Door Frames with 25mm doorstop, or Pyropanel one hour Fire Rated Timber Door Frame with 20mm doorstop.
- Doors weigh approx 35kg/m² (1/2 lite) and 45kg/m² (full lite) .

OPTIONAL EXTRAS

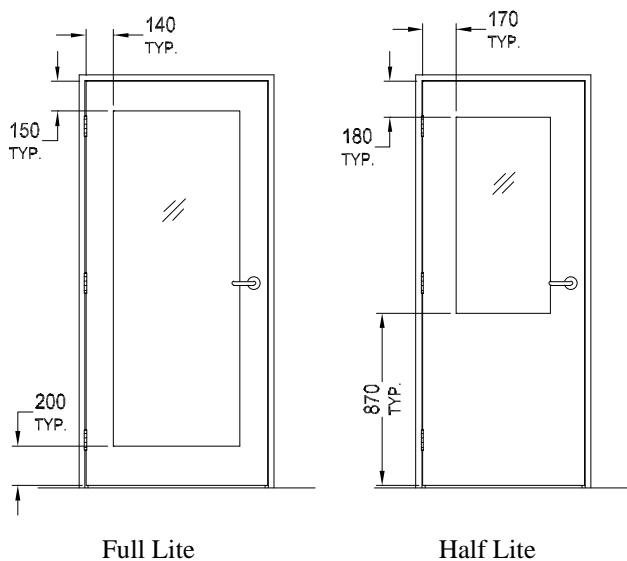
- MDF or Ply facings
- Different glass shapes available for 1/2 lite door (Contact Pyropanel for more info)
- Pre-hung option available.
- Pairs available – For fully glazed pair doors, refer *Pyropanel Steel Glass Fire Doors.*



MODELS AVAILABLE

Model	FRL	Thickness	Max Leaf size - Single	Max Leaf size - Pairs	Max Glass panel
PG1FD060-52	-/60/30	52	2400 x 920*	2400 x 920*	Half
PG2FD060-54	-/60/30	54	2700 x 1050*	N/A	Full

* Also available as 2100 x 1200



HOW TO SPECIFY

Eg, "Door to be a Pyropanel PG2FD060-54* Full -Lite Glass Fire Door, 54mm thick, tested and certified -/60/30 FRL, Ply face*, mounted in Pyropanel PMDF / Pyropanel Fire rated timber door frame*.

* denotes example - delete or change or specify as required



Pyropanel Developments Pty Ltd
 122-124 Beresford Rd, Lilydale, VIC, 3140
 Ph: (03) 9739 3100 Fax: (03) 9739 3115
 Email: sales@pyropanel.com.au
 Web: www.pyropanel.com.au

Distributed by:

FIRE DOOR LEAVES

Metal glass fire doors

TECH SHEET: FD-06

Issue: 10-06-2010

Glass fire doors incorporating the Forster metal framing system, -/60/30 FRL, available in singles and pairs.

DESCRIPTION

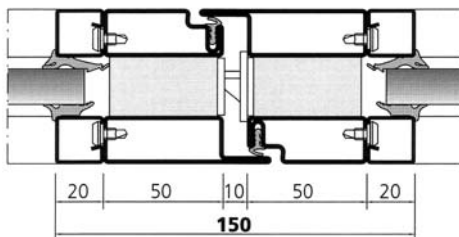
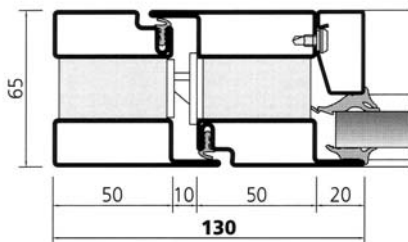
Fully glazed fire door incorporating the Forster insulated steel framing system, door frame and associated hardware, available in single and pair combinations with insulated top and side lites optional.

APPLICATIONS

Ideal for most applications that require a 1 hour certified fire door with the benefits and safety of transparent fire rated glazing, especially for fire escapes in residential complexes, hospitals, schools, car parks, shopping centres, shops, computer rooms, offices, public buildings, luxury residential high rise developments, etc.

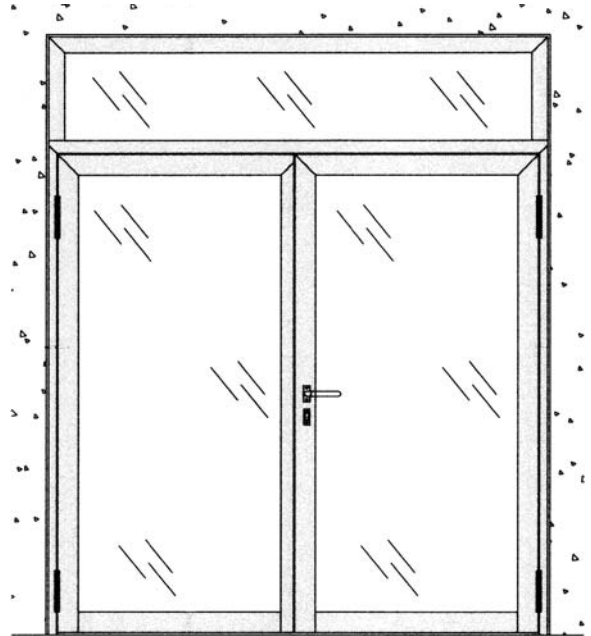
FEATURES

- Fully certified to Australian Standards.
- -/60/30 FRL in single and pairs configurations.
- For use in 1 hr and 2 hr plasterboard stud walls, fire rated masonry walls, gypsum block walls, aerated concrete blocks and wall panels. *Refer to Pyropanel if your wall type is not listed.*
- 65mm x 70mm slim line profile.
- Incorporates 18mm Pilkington Pyrostop Fire rated glass with A-class impact resistance.
- Comes standard with twin perimeter smoke seals and optional bottom drop seal.
- Insulated steel door frame included.
- Variety of stainless steel handles and hardware available.
- Leaves weigh approx 55kg/m².



OPTIONAL EXTRAS

- Powder coating
- Stainless steel frame.
- -/60/-, -/30/30 and -/60/60 and ratings also available for pairs and single configurations.
- Integrated top and side lites in fire ratings including -/30/-, -/60/-, -/60/30, -/60/60, -/90/90, and -/120/120 using an integrated insulated steel framing system are also available.
- Certified smoke leakage data is available - *Refer to Pyropanel for more information.*



MODELS AVAILABLE

Model	FRL	Thick-ness	Max Leaf size - Single	Max Leaf size - Pair
PGMFD060-65	-/60/30	65mm	2400 x 1200	2400 x 1200/1200

HOW TO SPECIFY

Eg, "Door to be a Pyropanel PGMFD060-65 Metal edged Glass Fire Rated Door, 65mm thick profile, -/60/30 FRL, incorporating 18mm Pilkington Pyrostop fire rated glass, mounted in integrated 65mm Fire rated door frame, prime paint / powdercoat / stainless steel* finish, incorporating certified Dorma Closer and sequence selector, and approved door hardware as required."

* denotes example - delete or change or specify as required



Pyropanel Developments Pty Ltd
 122-124 Beresford Rd, Lilydale, VIC, 3140
 Ph: (03) 9739 3100 Fax: (03) 9739 3115
 Email: sales@pyropanel.com.au
 Web: www.pyropanel.com.au

Distributed by:

FIRE DOOR LEAVES

Fire door with panel over (no transom)

TECH SHEET: FD-07

Issue: 11-06-2010

Fire doorsets and panel over with no separating transom, single leaves only, up to 2 hours fire rating

DESCRIPTION

Timber fire door leaves and panel over with no separating transom utilising the latest Pyropanel fire resistant door core and design technology. These doorsets are fully tested and certified to AS1530.4 and AS1905.1, and are available in a variety of sizes and finishes in 30 minute, 1 hour, and 2 hour fire resistance levels.

APPLICATIONS

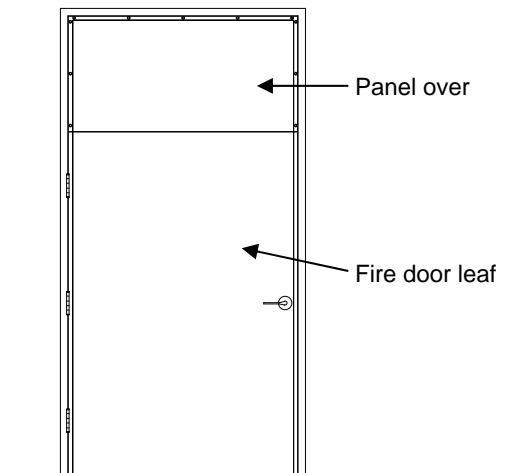
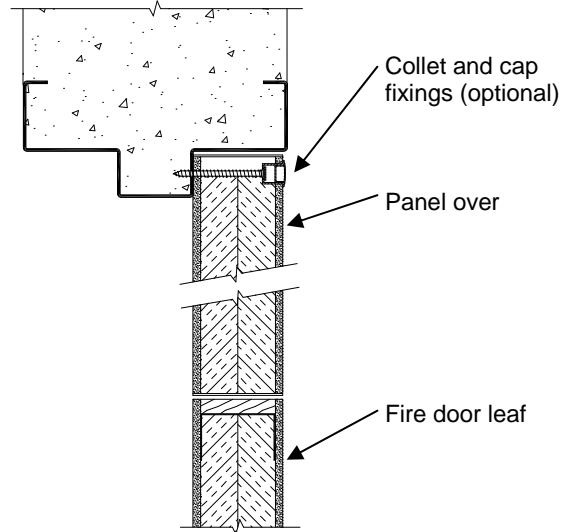
Ideal for applications that require a certified fire door and a panel over without a separating transom. Typically found in office lobbies, hospitals, schools, public buildings, shopping centres, factories, warehouses, plant rooms, etc.

FEATURES

- Single leaf configurations only.
- Door and panel are 48mm thick.
- Pressed metal door frames only.
- Ply facs.
- Panel is screw fixed, with optional collet and cap fixings.
- Maximum overall size, including door leaf and panel:
 - 3600 high x 1200 wide
- (refer to Pyropanel FD-01 **Timber fire door leaves tech sheet** for more details and features on fire door leaves)

OPTIONAL EXTRAS

- Steel, aluminium, PVC & Laminate.
- Vision panels up to 300 x 200 or 600 x 100mm for fire door using clear fire rated glass
- Kick panels of stainless steel to selected height.
- Smoke seals, viewing lens, electric strikes and locks, panic bars, magnetic hold open devices, etc, are all optional hardware items - Refer to Pyropanel hardware tech sheet for the latest edition of the approved hardware, or contact Pyropanel for any items that are not listed.



MODELS AVAILABLE

Model	Description	Max FRL	Thick-ness	Max overall size (leaf and panel)
FDPO-NT	Panel over with no transom	-/120/30	48	3600 x 1200

HOW TO SPECIFY

"Door to be a (eg) Pyropanel PFD060-48* Fire Rated Door, 48mm thick, -/60/30 FRL, Ply face*, mounted in Pyropanel PMDF / Pyropanel Fire rated steel door frame with a Pyropanel **FDPO-NT (FIRE DOOR PANEL OVER WITH NO TRANSOM)**, and the following options: (eg, vision panels, kick panels, etc*),

* denotes example - delete, change or specify as required.



Pyropanel Developments Pty Ltd
122-124 Beresford Rd, Lilydale, VIC, 3140
Ph: (03) 9739 3100 Fax: (03) 9739 3115
Email: sales@pyropanel.com.au
Web: www.pyropanel.com.au

Distributed by:

FIRE DOOR LEAVES

Fire door and panel over (with transom)

TECH SHEET: FD-08

Issue: 11-06-2010

Fire doorsets and panel over with separating transom for singles and pairs, up to 4 hours fire rating

DESCRIPTION

Timber fire door leaves and panel over including separating transom utilising the latest Pyropanel fire resistant door core and design technology. These doorsets are fully tested and certified to AS1530.4 and AS1905.1, and are available in a variety of sizes and finishes in 30 minute, 1 hour, 2 hour and 4 hour fire resistance levels.

APPLICATIONS

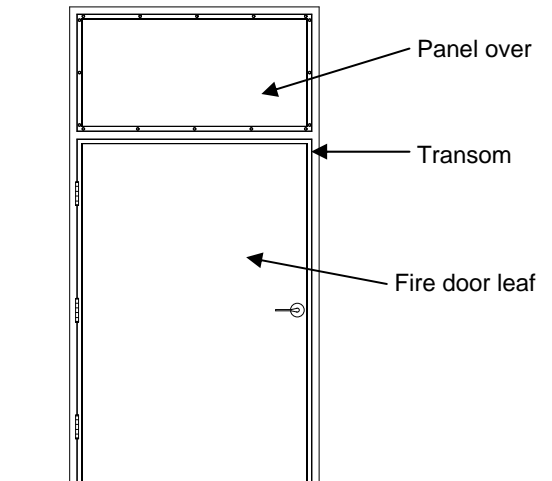
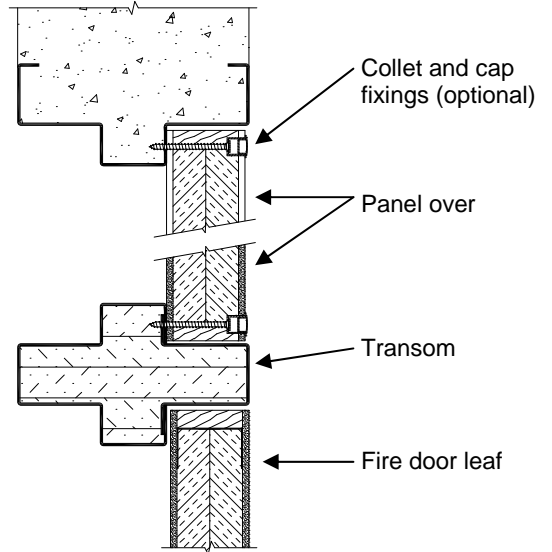
Ideal for applications that require a certified fire door and a panel over with a separating transom. Typically found in office lobbies, hospitals, schools, public buildings, shopping centres, factories, warehouses, plant rooms, etc.

FEATURES

- Panel available over single and pair fire door leaf configurations (note: panel over pair doors is a single panel only)
- Door and panel are 48mm thick.
- Pressed metal door frames only.
- Ply faces.
- Panel is screw fixed, with optional collet and cap fixings.

OPTIONAL EXTRAS

- Veneer, steel, aluminium, PVC, laminate.
- Vision panels up to 300 x 200 or 600 x 100mm for fire door using clear fire rated glass.
- Kick panels of stainless steel to selected height.
- Smoke seals, viewing lens, electric strikes and locks, panic bars, magnetic hold open devices, etc, are all optional hardware items - Refer to Pyropanel hardware tech sheet for the latest edition of the approved hardware, or contact Pyropanel for any items that are not listed.



MODELS AVAILABLE

Model	Description	Max FRL	Thick-ness	Max overall size (leaf and panel)
FDPO-WT-120-30	Panel over with transom	-/120/30	48	3600 x 1200 /1200
FDPO-WT-240-30	Panel over with transom	-/240/30	48	3350 x 1200 /1200

HOW TO SPECIFY

"Door to be a (eg) Pyropanel PFD060-48* Fire Rated Door, 48mm thick, -/60/30 FRL, Ply face*, mounted in Pyropanel PMDF / Pyropanel Fire rated steel door frame with a Pyropanel **FDPO-WT-120-30 (FIRE DOOR PANEL OVER WITH TRANSOM)**, and the following options: (eg, vision panels, kick panels, etc*),

* denotes example - delete, change or specify as required.



Pyropanel Developments Pty Ltd
122-124 Beresford Rd, Lilydale, VIC, 3140
Ph: (03) 9735 5688 Fax: (03) 9739 5772
Email: sales@pyropanel.com.au
Web: www.pyropanel.com.au

Distributed by:

FIRE DOOR LEAVES

Glass sliding fire doors

TECH SHEET: FD-09

Issue: 01-12-06

Automatic glass sliding fire door incorporating Pyropanel-Forster metal framing system, -/30/- FRL.

DESCRIPTION

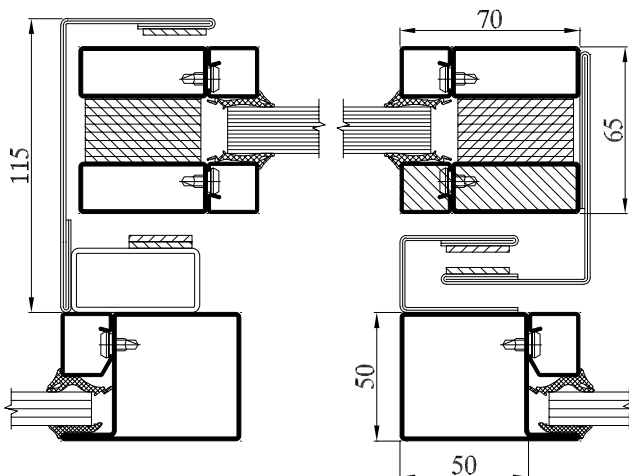
Fully glazed automatic sliding fire door available as single or bi-parting configurations, incorporating the Pyropanel-Forster insulated steel framing system, Pilkington Pyrostop intumescent fire rated glass, and a Kaba fire rated door operator.

APPLICATIONS

Ideal for applications that require an automatic glass sliding fire door, but which also require the protection of a fully certified fire door. Especially suitable for in residential complexes, hospitals, schools, shopping centres, shops, offices, public buildings, luxury residential high rise developments, etc.

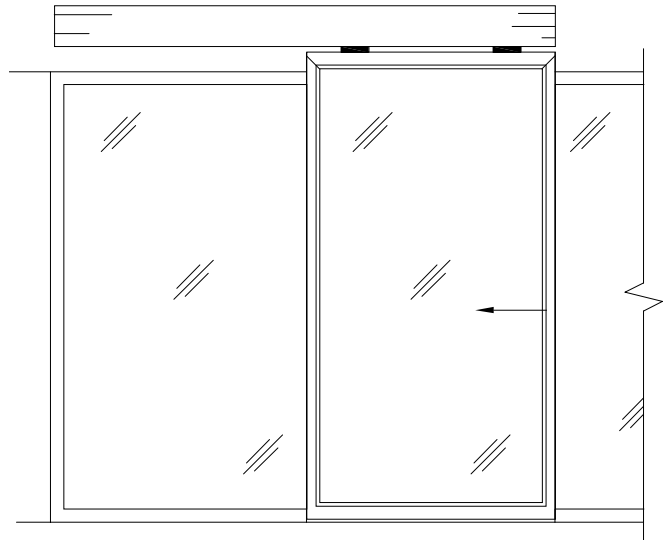
FEATURES

- Fully certified to Australian Standards.
- -/30/- FRL.
- Suitable for use in most wall types, including the Pyropanel -/60/- glass wall system which uses Pyropanel-Forster steel framing system and Pilkington Pyrodur fire rated glazing.
- 65mm x 70mm slim line profile.
- Extra large doors available.
- Incorporates 18mm Pilkington Pyrostop Fire rated glass with A-class impact resistance.
- Comes standard with intumescent perimeter smoke / fire seals.
- Single and bi-parting leaf configurations.
- Leaves weigh approx 55kg/m².
- Utilises the KABA Gilgen KGSSLMVSB door mechanism.



OPTIONAL EXTRAS

- Powder coating.
- Stainless steel frame.
- -/60/- or -/30/- surrounding side lites.
- Opaque film and decals to glass.



Typical layout of -/30/- single fire rated glass sliding door with -/60/- side lites

MODELS AVAILABLE

Model	FRL	Thick-ness	Max Leaf size - Single	Max Leaf size - Pair
PGSD30S	-/30/-	65mm	2700mm high x 1405mm wide	NA
PGSD30P	-/30/-	65mm	N/A	2700mm high x 1400mm / 1400mm wide

HOW TO SPECIFY

Eg, "Door to be a Pyropanel PGSD30S fully glazed single automatic glass sliding fire door, 65mm thick profile, -/30/- FRL, incorporating 18mm Pilkington Pyrostop fire rated glass, complete with flame guards, prime painted/ powdercoat / stainless steel* finish, incorporating a Kaba KGSSLMVSB certified fire rated operating mechanism, etc"

* denotes example - delete or change or specify as required



Pyropanel Developments Pty Ltd
122-124 Beresford Rd, Lilydale, VIC, 3140
Ph: (03) 9735 5688 Fax: (03) 9739 5772
Email: sales@pyropanel.com.au
Web: www.pyropanel.com.au

Distributed by:

FIRE DOOR LEAVES

FSC certified fire and non-fire rated leaves

TECH SHEET: FD-11

Issue: 11-07-2011

FSC approved door leaves suitable for "Greenstar" buildings requiring non-fire rated, or fire rated doors up to -/240/30

DESCRIPTION

Pyropanel FSC (Forest Stewardship Council) non rated and fire rated doors are FSC accredited, and meet the requirements for "Greenstar" projects and any other project that requires timber products to be sourced from Forest Stewardship Council certified timber.

APPLICATIONS

Any project requiring non fire rated or fire rated doors up to -/240/30, where a requirement also exists for the doors to be FSC certified, or be sourced from Forest Stewardship Council certified timber, including residential complexes, hospitals, schools, public buildings etc.

FEATURES

- Forest Stewardship Council Chain of Custody certified
- Fully tested and certified up to -/240/30 FRL
- Non fire rated models available
- Some models LSD (Life Safety Door) approved
- MDF facing up to one hour, steel and Ply facing up to 4 hours.
- Available in pairs or singles, and panel over
- 30 minute and 1 hour door leaves are of 'no metal' construction type, allowing for easy hanging and lock preparation (depending on leaf dimensions).
- Variety of meeting stiles for pair configurations.
- Suitable for Pyropanel Pressed Metal Door Frames or Pyropanel one hour Fire Rated FSC Timber Door Frame.
- Also suitable for modified non rated door frames - *contact Pyropanel for more information.*
- Split frame or standard one piece frame options.
- Optional intumescent hot smokes seals available
- Recommended hinge configuration:
 - up to 2040 x 920 = 3 hinges.
 - up to 2400 x 1020 = 4 hinges.
 - up to 3000 x 1500 = 5 hinges.

OPTIONAL EXTRAS

- Veneer, steel, aluminium, PVC, laminate, routed and/or applied beading facings.
- Vision panels up to 65,000mm², or 1/2 lite glazed panels (*Refer Glass Fire Doors*)
- Kick panels of steel or stainless steel to selected height.

OPTIONAL EXTRAS CON'T

- Smoke seals, viewing lens, electric strikes and locks, panic bars, magnetic hold open devices, etc, are all optional hardware items - Refer to Pyropanel hardware tech sheet for the latest edition of the approved hardware, or contact Pyropanel for any items that are not listed.
- Fire rated top and side-lites available.
- Pre-hung option available for all fire ratings.
- Panel over with or without transom (Refer transom panel Tech sheet for more information).
- Many other testing standards are approved - refer Pyropanel for more information.
- Also available as 2 hour rated double acting fire doorsets - Refer to *Pyropanel Double Acting fire door leaves.*

MODELS AVAILABLE

Model	FRL	Thick-ness	Max Leaf size - Single	Max Leaf size - Pair
PFD-FSC-0-38	-/-/-	38	Any	Any
PFD-FSC-0-48	-/-/-	48	Any	Any
PFD-FSC-030-38	-/30/30	38	2420 x 1020 or 2200 x 1120	N/A
PFD-FSC-030-48	-/30/30	48	3000 x 1500	3000 x 1500/1500
PFD-FSC-060-38	-/60/30	38	2350 x 1020	N/A
PFD-FSC-060-48	-/60/30	48	3000 x 1500	3000 x 1500/1500
PFD-FSC-120-38	-/120/30	38	2350 x 1020	N/A
PFD-FSC-120-48	-/120/30	48	3000 x 1500	3000 x 1350/1350
PFD-FSC-240-48	-/240/30	48	3000 x 1500	3000 x 1200/1200

HOW TO SPECIFY

"Eg. Door to be a Pyropanel PFD-FSC-060-48 Forest Stewardship Council certified Fire Rated Door, 48mm* thick, -/60/30 FRL*, Ply/MDF/Steel* face, mounted in Pyropanel PMDF / Pyropanel FSC Fire rated timber door frame*, with the following options: (eg, vision panels, kick panels, etc*),*

** denotes example - delete, change or specify as required.*



Pyropanel Developments Pty Ltd
 122-124 Beresford Rd, Lilydale, VIC, 3140
 Ph: (03) 9739 3100 Fax: (03) 9739 3115
 Email: sales@pyropanel.com.au
 Web: www.pyropanel.com.au

Distributed by: