



Sunstone Collection

caroma.com.au



*inspire*  
**Caroma**



# Sunstone Collection

Introducing Sunstone from Caroma. This range of basins and incredibly decadent freestanding bath offer a pared back aesthetic and create an unassuming authority in any bathroom. The fine, delicate lines and velvety smooth contours of the solid surface material deliver meticulous detail with an on trend matte finish.

## style note

CHARACTERISED BY MOODY HUES, LUXURIOUS TEXTURES AND A MONOCHROMATIC PALETTE, THE SUNSTONE COLLECTION LENDS ITSELF TO A TAILORED AND UNDENIABLY BEAUTIFUL LUXE MINIMALIST STYLE.

### Create your own Sunstone bathroom

Products featured: Caroma Sunstone 900 Wall Basin with Right Hand Shelf and chrome towel rail, Caroma Sunstone 1810 Freestanding Bath, Dorf Epic taps & accessories and the Caroma Urbane Wall Faced Invisi Series II® toilet suite.



Basins



Sunstone 450 Solid Surface Hand Wall Basin // 01  
*Shown with optional chrome towel rail*

Sunstone 600 Solid Surface Wall Basin // 02

Sunstone 600 Solid Surface Wall Basin - Right Hand Shelf // 03

Sunstone 900 Solid Surface Wall Basin // 04  
*Shown with optional matte black towel rail*

Sunstone 900 Solid Surface Wall Basin - Right Hand Shelf // 05



Features

- Thin rim detail in line with current trends
- Integrated solid surface pop up waste detail for a sleek organic look
- Crafted from soft to touch advanced composite solid surface material
- Use as a wall basin or place on bespoke cabinetry against the wall for installation versatility
- Optional integrated towel rail available in chrome or matte black for increased functionality



Sunstone 900 Solid Surface Wall Basin matched with Dorf Epic Wall Basin Mixer

With carefully curated lines and sharp detailing Sunstone creates sleek sophistication.



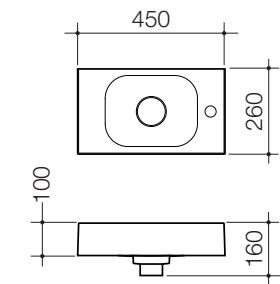


Sunstone 1810 Solid Surface Freestanding Bath matched with Dorf Epic Freestanding Bath Filler

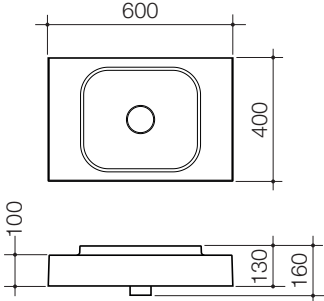
Features

- Thin rim detail in line with current trends
- Integrated solid surface pop up waste detail for a sleek organic look
- Crafted from soft to touch advanced composite solid surface material
- Wide functional end ledges for your favourite bathroom indulgence

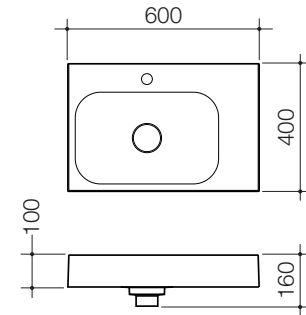
Basins



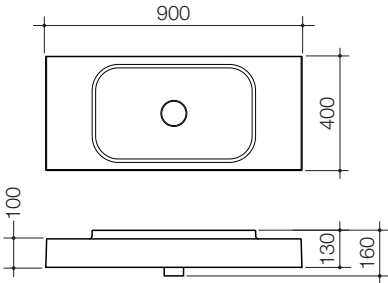
Sunstone 450 Solid Surface Hand Wall Basin  
1TH - 897410W



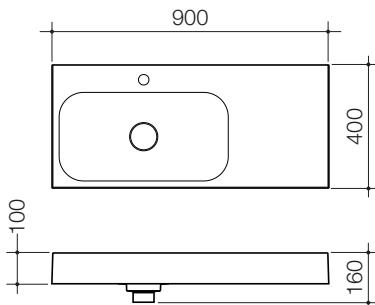
Sunstone 600 Solid Surface Wall Basin  
NTH - 897500W



Sunstone 600 Solid Surface Wall Basin - Right Hand Shelf  
1TH - 897610W  
NTH - 897600W



Sunstone 900 Solid Surface Wall Basin  
NTH - 897700W



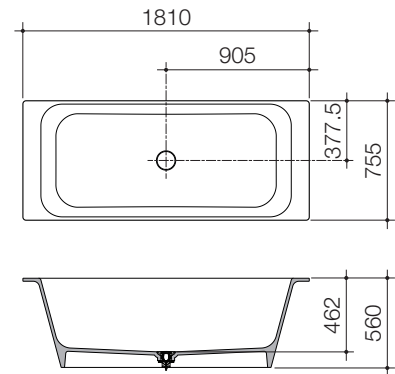
Sunstone 900 Solid Surface Wall Basin - Right Hand Shelf  
1TH - 897810W  
NTH - 897800W

Optional Towel Rails

For Sunstone 450 Solid Surface Hand Wall Basin  
Matte Black - 897200B  
Chrome - 897200C

For all 600 and 900 Sunstone Solid Surface Wall Basins  
Matte Black - 897210B  
Chrome - 897210C

Bath



Sunstone 1810 Solid Surface Freestanding Bath  
SS8W

SUNSTONE SOLID SURFACE EVERYDAY CARE

Caring for your Caroma Solid Surface product is quick and easy. For day-to-day cleaning, most dirt and grime that may build up on the surface can be removed with a simple wipe using a damp soapy sponge or cloth, followed by a rinse.

TIPS TO PREVENT DAMAGE

The use of harsh chemical products such as acetone, trielin or strong acids will stain the surface of the product and should not be used. Never pour essential oils directly into an empty bath or basin, always add to the water.

REMOVING STAINS

If a stain appears, always start with the cleaning method recommended under 'Everyday Care' first. If the stain is still visible, clean using a damp sponge or cloth and a mild abrasive cream or paste cleanser (e.g. Jif® or Gumption®) using a light, wide, circular motion. Follow with a rinse. Lightly wipe the surface using a wide circular motion. Take care to rinse the surface thoroughly. This cleaning method should remove most stains that appear on the surface.



The Sunstone Collection is suitable  
for a range of applications including:

---



Residential



Office



Shopping Centres



Restaurants

*inspire*  
**Caroma**

For more information call **13 14 16** or visit **[www.caroma.com.au](http://www.caroma.com.au)**



**GWA**  
Bathrooms & Kitchens

©Copyright 2015, Caroma Industries Ltd. ABN 35 000 189 499. All rights reserved. Material and design specifications subject to change without notice. Product colour reproduction is as near to actual product colour as production methods allow.  
Warning: Products in this brochure are the subject of registered designs and patents. ® is a registered trademark of Caroma Industries. This brochure relates to Australian products only and some product, design or specifications may differ in other countries.

