



Visit **stormtech.com.au** for detailed assembly and installation information.



DISTRIBUTORS + STOCKISTS

To find a distributor near you, please visit our website or call our office.

TECHNICAL INFORMATION

We provide product information and CAD files for download from our website.



Stormtech™

Stormtech Pty Ltd | 22 Norfolk Avenue, South Nowra, NSW 2541 Australia
Phone 1300 653 403 Email info@stormtech.com.au Web stormtech.com.au

Architectural
Grates + Drains
By Stormtech.





Black uPVC Channels
with Powdercoat Grate.



Better
drainage
by design.



Designed and
manufactured
in Australia
since 1989.

ARCHITECTURAL GRATES + DRAINS

Beautifully crafted from marine grade stainless steel and manufactured in Australia, Stormtech systems guarantee the highest standards in workmanship and durability.

Stormtech's extensive range of linear drainage is designed to suit both residential and commercial applications, with unmatched design versatility and architectural style, creating seamless drainage solutions for any project.

Stormtech proudly builds on its unrivalled environmental reputation as the only drainage manufacturer with Level-A GreenTag Certification across our complete range of products.



RESIDENTIAL, HEALTH + AGED CARE

Bathrooms + Showers	Thresholds
Pools + Surrounds	Driveways
Courtyards + Outdoors	Paved Areas
Laundries + Wet Areas	

COMMERCIAL + HOSPITALITY

Hotels + Resorts	Commercial Kitchens
Bars + Restaurants	Pedestrian Areas
Universal Access	Water Fountains
Swimming Pools	Entry Mats
Thresholds	Sporting Facilities



Linear Drainage



Square Floor Wastes

MADE-TO-LENGTH UNITS

No assembly required.

Stormtech Made-to-Length products are a complete finished stainless steel drainage unit ready for installation with custom waste outlet position.

Available with custom floor and wall flanges to suit tile depth.

FIXED LENGTH UNITS

No assembly required.

Stormtech complete finished units with centre waste outlet are available in 900mm, 1000mm, 1200mm and 1500mm lengths.

MODULAR KITS

Modular site finished system designed for flexibility and ease of installation.

Available in lengths from 900mm. Joiners and angle joiners available for unrestricted lengths and corner installations.



Available in a range of grate styles and finishes to compliment your Stormtech linear drainage.

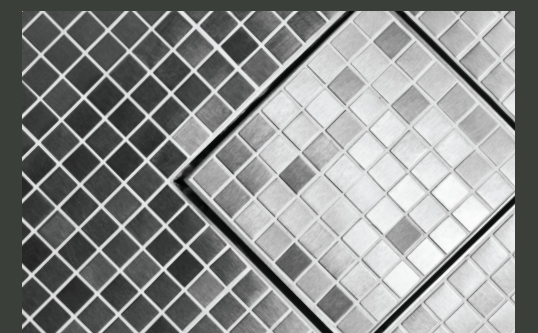
STANDARD + COMMERCIAL RANGE

The Stormtech Square Range offers a luxurious finish and great value wherever a traditional floor waste is required.

Grate width is 100mm or 130mm for Tile Inserts. Larger sizes up to 200mm are available in our Square Commercial Range.

Choose from our unique range of grate styles to compliment your Stormtech linear drainage.

Available with the Stormtech range of electroplate metallic and powdercoat finishes.





Specialised Linear Drainage

THRESHOLD DRAINAGE

Stormtech pioneered the design of the level threshold drainage system. From its origin in Universal Access, to its emergence as a popular design choice, Stormtech remains at the forefront of threshold drainage innovations and contemporary design.

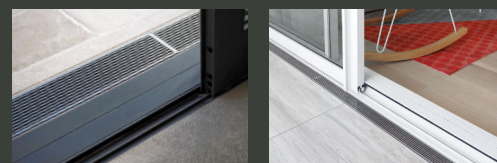
Access and Mobility Code compliant, the threshold range creates a zero threshold, for seamless continuity between indoor and outdoor areas.

Suitable for sliding, hinged, bi-fold and top hung doors.

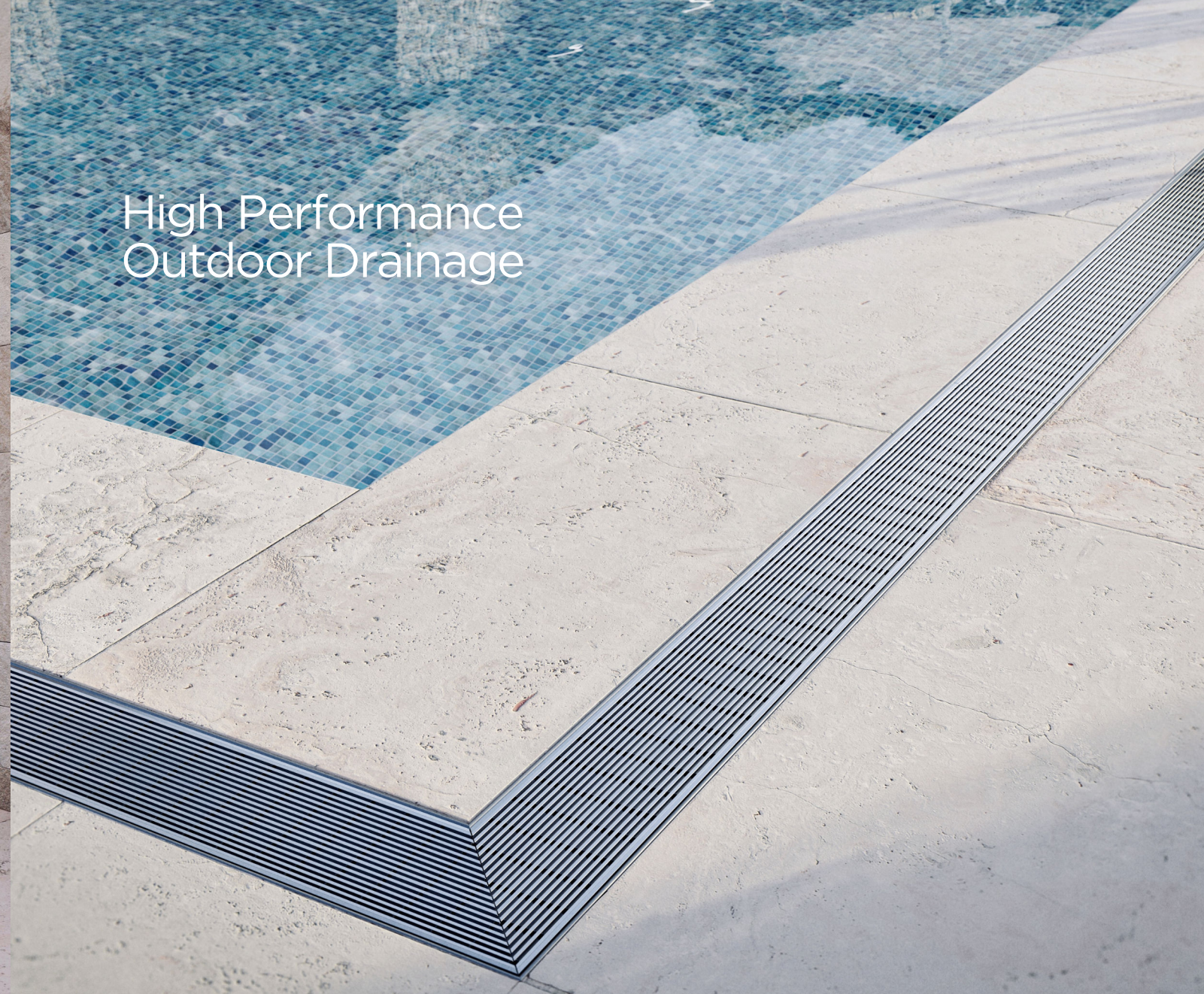
VINYL CLAMP

Designed specifically for vinyl floor environments, the Stormtech Vinyl Clamp range provides a screw down flange that mechanically clamps the vinyl beneath, offering seamless integration into vinyl floor surfaces.

Ideally suited to wet areas in health and aged care facilities, and commercial kitchens environments.



High Performance Outdoor Drainage



High capacity linear drainage.

SPECIAL ASSEMBLY

Narrow profile, high capacity drainage systems allowing flexibility in pool design and ideally suited to wet-edge and infinity pool applications.

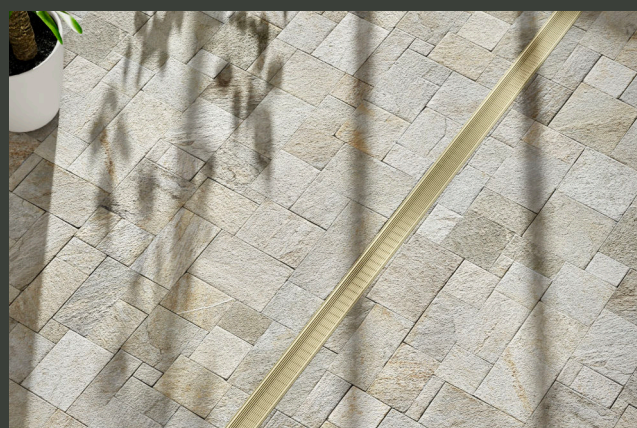
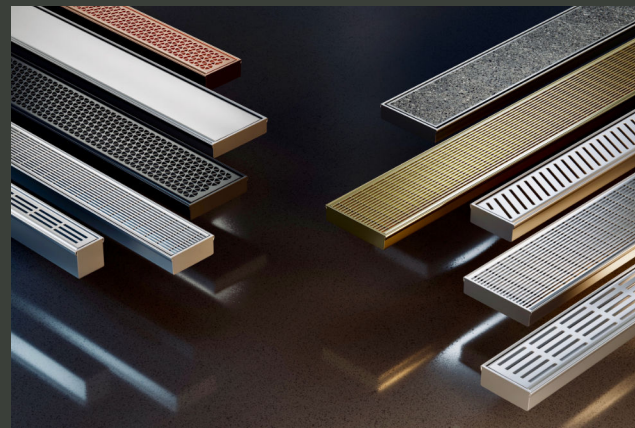
SLOT DRAIN

Designed for stormwater run-off and surface water drainage around driveways, paved areas, sporting areas and garden edges.





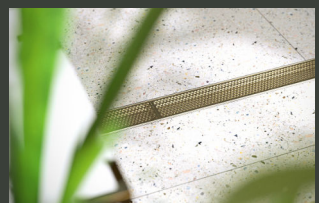
Variations + Colour Finishes



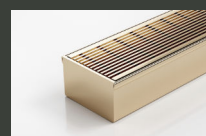
Create the
perfect finish.

DESIGNER SELECTIONS

Create perfect harmony in the bathroom with our range of luminous metallic grate finishes or complement a contemporary design with our deep black finishes in satin or matte.



Metallic and Powdercoat Finishes



Bronze



Brass



Copper



Matte Black



Gun Metal Matte Black

Custom Fabrication

Wash Plane Sink
Custom 38AR linear grate.



Stormtech Custom. Made for you.

TAILORED DRAINAGE

Our Custom Fabrication range creates a tailored, site specific solution for unique situations.

Customise and configure dimensions, capacity requirements and grate finish to precisely suit your project design.

All custom drainage system are available in load classes from light (Load Class A) to extra heavy duty (Load Class D).

Available with the Stormtech range of electroplate metallic and powdercoat finishes.



Planning your Linear Drainage

COLOUR FINISHES

Finish any Stormtech drainage in luminous metallic copper, bronze and brass or powdercoat with rich black or custom colours available in matte or satin finish.



Design Choose your grate design and colour



AR
Architectural Grate
2mm wire / 2.5mm gap



TR
Standard Grate
3mm wire / 5mm gap



Ti
Tile Insert



MND
Marc Newson Design



PS
Punched Slot



PPS
Punched Perpendicular



PAS
Punched Angle



FT
Flat Top Grate

Width Choose your width

100 Range

106mm Overall Width

65 Range

72mm Overall Width
74mm with uPVC Channel

38 Range

46mm Overall Width

Depth Choose your depth

20

23mm Total Depth

25

27mm Total Depth

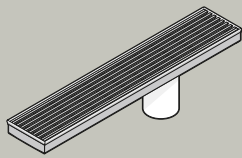
30

31mm Total Depth
32mm with 100 Range uPVC Channel

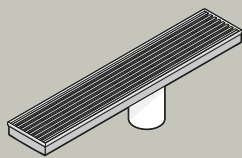
40

42mm Total Depth

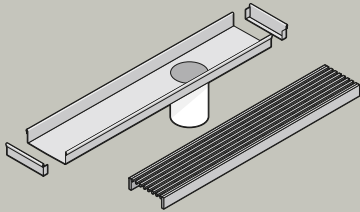
Type Choose required product type.



Made-to-Length
NO ASSEMBLY REQUIRED
Custom length, fully finished stainless steel drainage unit.
All Stainless Steel
Custom Outlet Position



Fixed Length
NO ASSEMBLY REQUIRED
All stainless steel drainage unit, ready for installation.
All Stainless Steel
Centre Outlet Position



Modular Kits
TRIM AND INSTALL
Site finished kit designed for flexibility during installation.
Stainless Steel or uPVC
Channel + Fittings

Stormtech Product Selector

100mm Grate

65mm Grate

38mm Grate

Linear Drainage Stormwater / Sanitary Applications

GRATE STYLE	DIMENSIONS - WIDTH x DEPTH -	MADE TO LENGTH - CUSTOM OUTLET -	FIXED-LENGTH - CENTRE OUTLET -	MODULAR KITS		
		All Stainless Steel	All Stainless Steel	Stainless Steel Channel	Grey uPVC Channel	Black uPVC Channel
AR Architectural	106mm x 23mm	100ARi20MTL	100ARiCO20	100ARi20	100ARG20	100ARGBL20
	106mm x 32mm	-	-	-	100ARG30	100ARGBL30
	106mm x 42mm	100ARi40MTL	-	-	-	-
	72mm x 27mm	65ARi25MTL	65ARiCO25	65ARi25	65ARG25	-
	72mm x 42mm	65ARi40MTL	-	65ARi40	65ARG40	-
	46mm x 42mm	38ARi40MTL	-	-	38ARG40	-
TR Standard Range	106mm x 23mm	100TRi20MTL	100TRiCO20	100TRi20	100TRG20	100TRGBL20
	106mm x 42mm	100TRi40MTL	-	-	-	-
	72mm x 27mm	65TRi25MTL	65TRiCO25	65TRi25	65TRG25	-
	72mm x 42mm	65TRi40MTL	-	65TRi40	65TRG40	-
Ti Tile Insert 1.5mm Tile Insert	106mm x 23mm	100Ti20MTL	100TiCO20	100Ti20	100TiG20	100TiGBL20
	106mm x 23mm	100TiXi20MTL	-	-	-	-
	72mm x 27mm	65Ti25MTL	65TiCO25	65Ti25	65TiG25	-
Ti Premium Tile Insert 3mm Tile Insert	106mm x 31mm	100Ti30MTL	100TiCO30	-	-	-
	106mm x 42mm	100Ti40MTL	-	-	-	-
	72mm x 31mm	65Ti30MTL	65TiCO30	-	-	-
	72mm x 42mm	65Ti40MTL	-	65Ti40	-	-
MND Marc Newson	106mm x 23mm	100MNDi20MTL	100MNDiCO20	100MNDi20	100MNDG20	100MNDGBL20
	72mm x 27mm	65MNDi25MTL	65MNDiCO25	65MNDi25	65MNDG25	-
PS Punched Slot	106mm x 23mm	100PSi20MTL	100PSiCO20	100PSi20	100PSG20	100PSGBL20
	106mm x 42mm	100PSi40MTL	-	-	-	-
	72mm x 27mm	65PSi25MTL	65PSiCO25	65PSi25	65PSG25	-
	72mm x 42mm	65PSi40MTL	-	65PSi40	65PSG40	-
	46mm x 42mm	38PSi40MTL	-	-	38PSG40	-
PPS Punched Perpendicular	106mm x 23mm	100PPSi20MTL	100PPSiCO20	100PPSi20	100PPSG20	100PPSGBL20
	106mm x 42mm	100PPSi40MTL	-	-	-	-
	72mm x 27mm	65PPSi25MTL	65PPSiCO25	65PPSi25	65PPSG25	-
	72mm x 42mm	65PPSi40MTL	-	65PPSi40	65PPSG40	-
PAS Punched Angle	106mm x 23mm	100PASi20MTL	100PASiCO20	100PASi20	100PASG20	100PASGBL20
	106mm x 42mm	100PASi40MTL	-	-	-	-
	72mm x 27mm	65PASi25MTL	65PASiCO25	65PASi25	65PASG25	-
	72mm x 42mm	65PASi40MTL	-	65PASi40	65PASG40	-
FT Flat Top	106mm x 23mm	100FTi20MTL	-	-	-	-
	72mm x 27mm	65FTi25MTL	-	-	-	-

Product Selector



Linear Drainage + Integrated Flange

GRATE STYLE	DEPTH	100mm GRATE WIDTH	65mm GRATE WIDTH
AR Architectural	42mm	100ARiMTLF	65ARiMTLF
TR Standard Range	42mm	100TRiMTLF	65TRiMTLF
Ti Tile Insert	42mm	100TiimTLF	65TiimTLF
PS Punched Slot	42mm	100PSiMTLF	65PSiMTLF
PPS Punched Perpendicular	42mm	100PPSiMTLF	65PPSiMTLF
PAS Punched Angle	42mm	100PASiMTLF	65PASiMTLF

Square Floor Waste

GRATE STYLE	- WIDTH x LENGTH -	- DEPTH -	- OUTLET SIZE -	PRODUCT
AR Architectural	103mm x 103mm	22mm	DN80	SQ100AR
	103mm x 103mm	22mm	DN50	SQ100AR-44
TR Standard Range	103mm x 103mm	22mm	DN80	SQ100TR
	103mm x 103mm	22mm	DN50	SQ100TR-44
MND Marc Newson	103mm x 103mm	22mm	DN80	SQ100MND
	103mm x 103mm	22mm	DN50	SQ100MND-44
PS Punched Slot	103mm x 103mm	22mm	DN80	SQ100PS
	103mm x 103mm	22mm	DN50	SQ100PS-44
PPS Punched Perpendicular	103mm x 103mm	22mm	DN80	SQ100PPS
	103mm x 103mm	22mm	DN50	SQ100PPS-44
PAS Punched Angle	103mm x 103mm	22mm	DN80	SQ100PAS
	103mm x 103mm	22mm	DN50	SQ100PAS-44
Ti Tile Insert 1.5mm Tile Insert	130mm x 130mm	23mm	DN80	SQ100Ti20-80
	130mm x 130mm	23mm	DN100	SQ100Ti20-100
Ti Premium Tile Insert 3mm Tile Insert	130mm x 130mm	23mm	DN50	SQP100Ti20-50
	130mm x 130mm	23mm	DN80	SQP100Ti20-80
	130mm x 130mm	30mm	DN80	SQP100Ti20-BLACK
	130mm x 130mm	33mm	DN80	SQP100Ti33-80
	150mm x 150mm	32mm	DN80	SQ150CR
CR Commercial Range	150mm x 150mm	32mm	DN80	SQ150CR-76
	200mm x 200mm	32mm	DN100	SQ200CR
	200mm x 200mm	32mm	DN80	SQ200CR-76

Product Selector



Threshold Drainage

GRATE STYLE	DIMENSIONS - GRATE WIDTH -	SLIDING + HINGED DOORS Door Track with Sub-sill Tray	DOORS Door Track Only Application	BI-FOLD + TOP HUNG DOORS
AR Architectural	100mm	100ARTDi	100ARTDiS	100ARTDiBF
	65mm	65ARTDi	65ARTDiS	-
TR Standard Range	100mm	100TRTDi	100TRTDiS	100TRTDiBF
	65mm	65TRTDi	65TRTDiS	-
Ti Tile Insert	100mm	100TiTDi	100TiTDiS	100TiTDiBF
	65mm	65TiTDi	65TiTDiS	-
MND Marc Newson	100mm	100MNDTDi	100MNDTDiS	100MNDTDiBF
	65mm	65MNDTDi	65MNDTDiS	-
PS Punched Slot	100mm	100PSTDi	100PSTDiS	100PSTDiBF
	65mm	65PSTDi	65PSTDiS	-
PPS Punched Perpendicular	100mm	100PPSTDi	100PPSTDiS	100PPSTDiBF
	65mm	65PPSTDi	65PPSTDiS	-
PAS Punched Angle	100mm	100PASTDi	100PASTDiS	100PASTDiBF
	65mm	65PASTDi	65PASTDiS	-

Vinyl Clamp Drainage

DESCRIPTION	GRATE WIDTH	TOTAL WIDTH x DEPTH	PRODUCT
Vinyl Clamp Drainage Unit	100mm	170mm x 27mm	VC100-25
	100mm	170mm x 42mm	VC100-42

Special Assembly

Complete the Special Assembly Series with an AR, TR or PS Stormtech grate design.

DESCRIPTION	DIMENSIONS - TOP CHANNEL -	- LENGTH -	PRODUCT
Special Assembly › 100mm Pipe with Channel	74mm x 42mm	3000mm	65G100
Special Assembly › 90mm Pipe with Channel	74mm x 42mm	3000mm	65G90
Special Assembly › 100mm Pipe with Channel	46mm x 42mm	3000mm	38G100
Special Assembly › 90mm Pipe with Channel	46mm x 42mm	3000mm	38G90

Slot Drain

DESCRIPTION	DIMENSIONS - SLOT CHANNEL -	- LENGTH -	PRODUCT
Slot Drain › 90mm Pipe with 25mm PVC Insert Only. NO HOLES	25mm x 60mm	3000mm	SD90
Slot Drain › 90mm Pipe with 25mm PVC Insert. WITH HOLES	25mm x 60mm	3000mm	SD90H