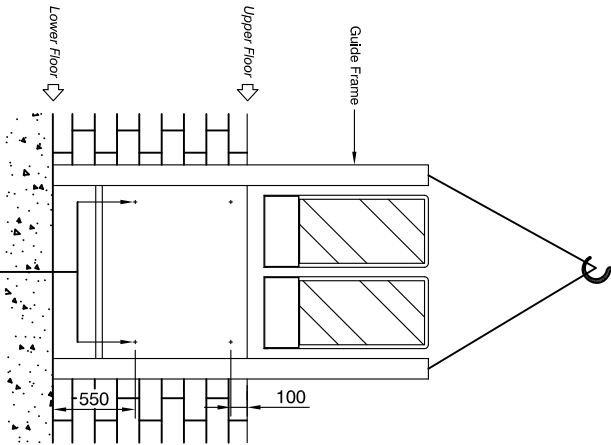
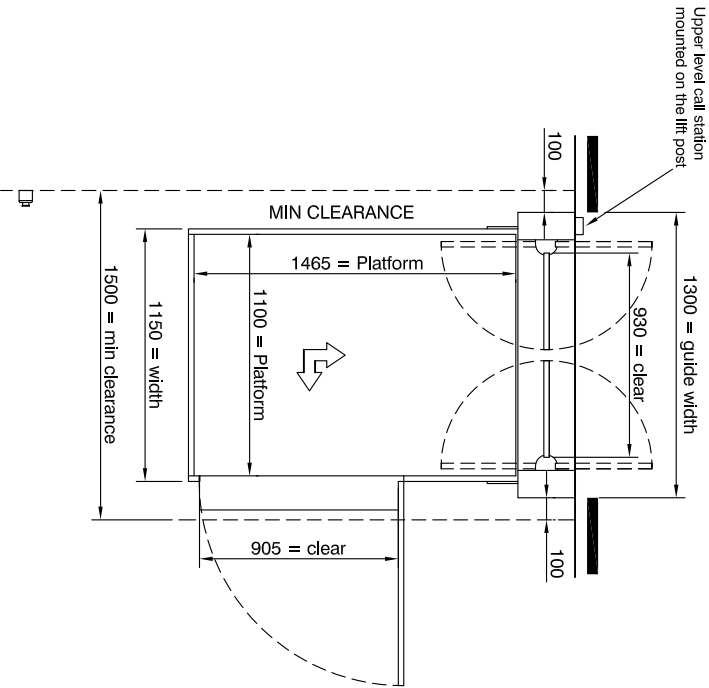


IMPORTANT NOTE
Lifting eye / beam must be provided for lifting the guides into place. The eye / beam must be rated with a SWL of 500Kg

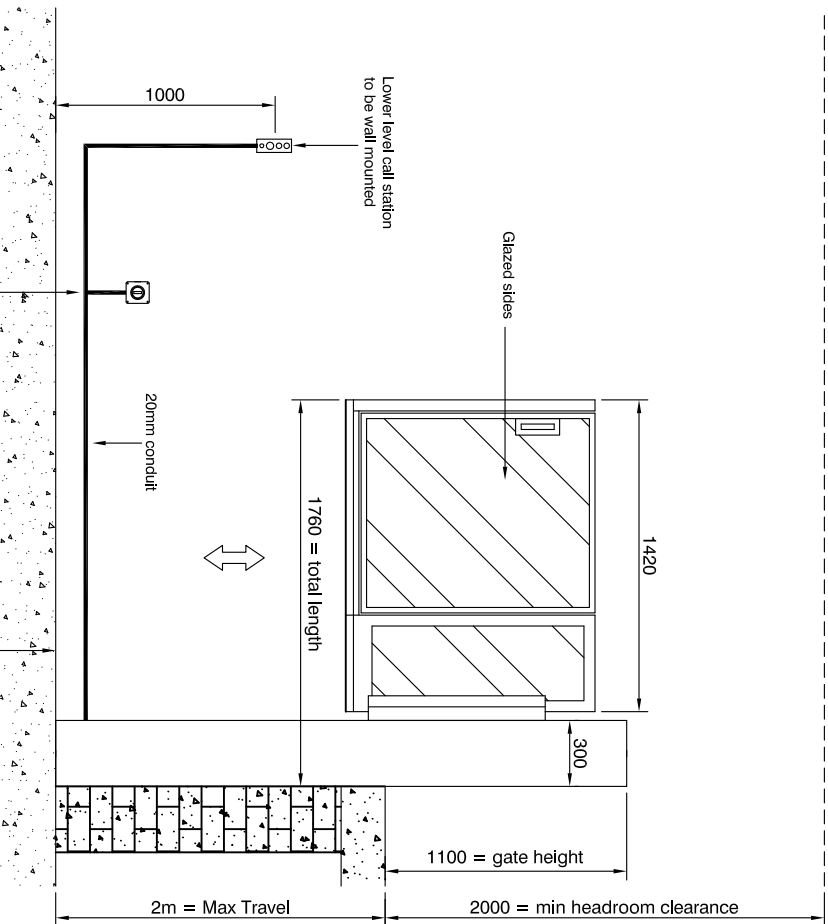


IMPORTANT NOTE
Concrete wall (steel beam) to be provided for the guide frame fixings - see dig number '2M DURELIFT LOADS' for fixing details and pull out loads

GUIDE FRAME FIXING DETAIL



PLAN VIEW



SIDE ELEVATION

Vertical Lift Platform Specification

- Load: 340kg / 2 persons
- Drive: Direct driven screw and nut
- Speed: 0.6m / sec
- Travel: Min 0.6m / Max 2m
- Stops: 2
- Motor: 1.1kw
- Power: 415v 3ph 50Hz 10A
- Colour: RAL 7031 as standard (alternative RAL colours available)

Building work required

- 1 - Provide power supply
- 2 - Provide upper floor adequate for fixing the guides
- 3 - Provide level surface on lower and upper level

| | | | |
|---------|--------------------------|---|------------|
| | | Unit 34, 49/51 Mitchell Road, Bundoora NSW 3083 Tel - 1 300 884960 Fax - +61 2 88805048 Email - info@platformliftco.com.au website - www.platformliftco.com.au | |
| TITLE | 2M DURELIFT R/H ADJACENT | | |
| DWG NO. | 2M DURELIFT RH ADJ | | |
| SCALE | NTS | DATE | 27/05/2011 |
| SCALE | NTS | DATE | 27/05/2011 |
| DRAWN | CH | | REV |
| | | | B |