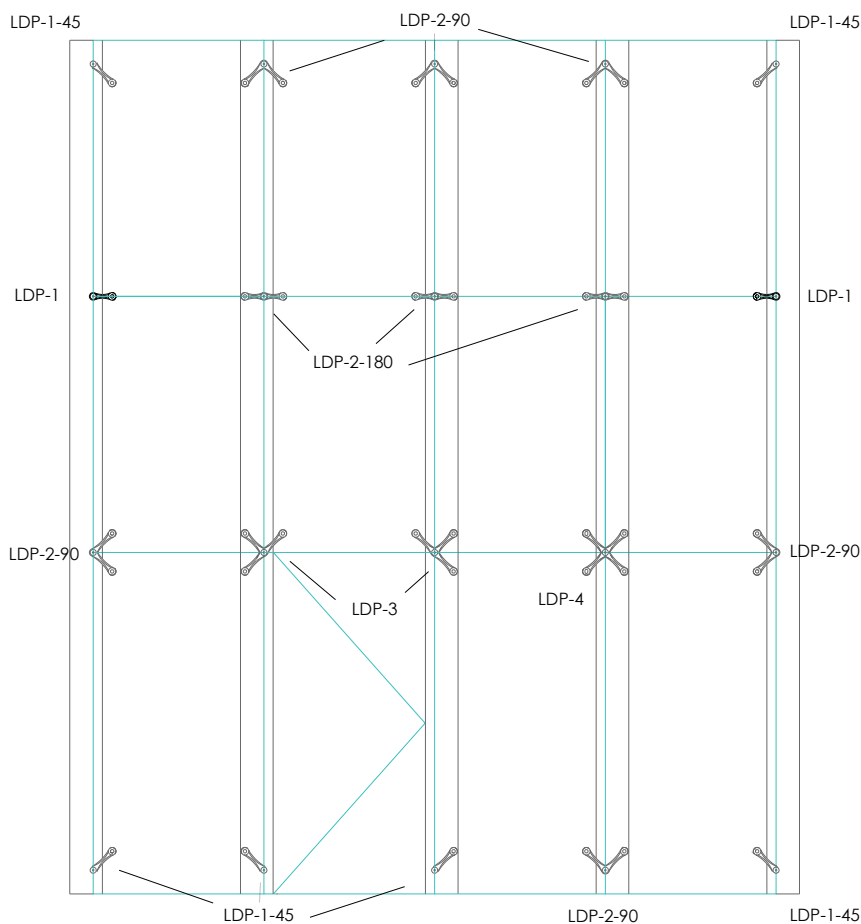


# Light Duty Post Fixed Range

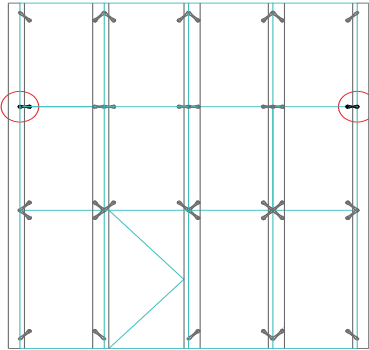
The Affix LDP Range of Spider Fittings are suitable for a variety of applications. Most commonly for bolting through steel sections or into concrete or timber.

Suitable for steel supported glass facades, floors and overhead glazing.

Product	Page Numbers
LDP-1	H35&36
LDP-1-45	H35&36
LDP-2-90	H37&38
LDP-2-180	H37&38
LDP-3	H39&40
LDP-4	H39&40

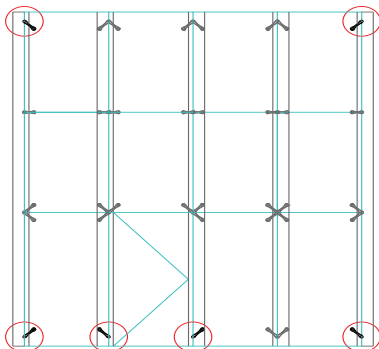


## LDP-1 Range



### 1 ARM LIGHT DUTY POST FIXED LDP-1

- Designed for FACE FIXED applications.
- Ideal for bolting through steel sections or bolting into concrete/timber.
- Suitable for steel supported glass facades, floors or overhead glazing.
- A4-70, M10 x 110mm all thread, M10 hex nuts and M10 wedge lock washers supplied as standard.
- M10 timber lag screw and cut to length M10 all thread can be supplied on request

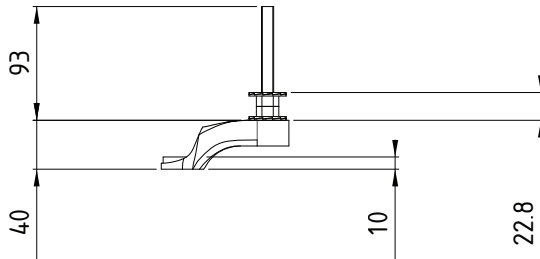


### 1 ARM 45° LIGHT DUTY POST FIXED LDP-1-45

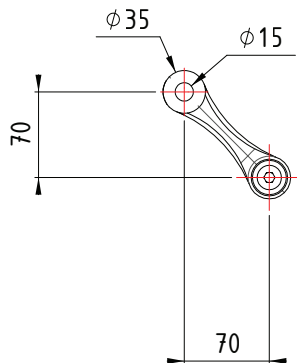
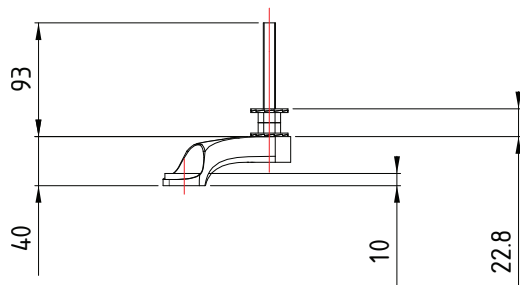
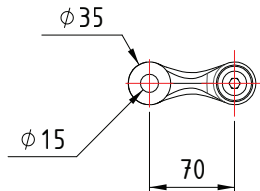
- Designed for FACE FIXED applications.
- Ideal for bolting through steel sections or bolting into concrete/timber.
- Suitable for steel supported glass facades, floors or overhead glazing.
- A4-70, M10 x 110mm all thread, M10 hex nuts and M10 wedge lock washers supplied as standard.
- M10 timber lag screw and cut to length M10 all thread can be supplied on request

See following page for technical drawing

## LDP-1 Range

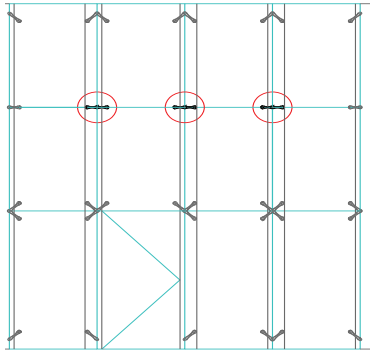


**LDP-1**



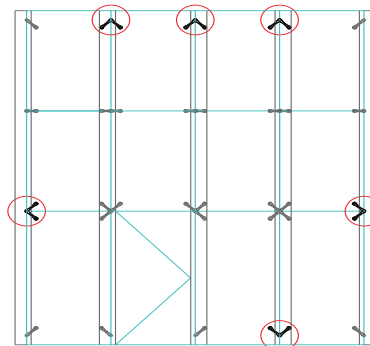
**LDP-1-45**

## LDP-2 Range



### 2 ARM 180° LIGHT DUTY POST FIXED LDP-2-180

- Designed for FACE FIXED applications.
- Ideal for bolting through steel sections or bolting into concrete/timber.
- Suitable for steel supported glass facades, floors or overhead glazing.
- A4-70, M10 x 110mm all thread, M10 hex nuts and M10 wedge lock washers supplied as standard.
- M10 timber lag screw and cut to length M10 all thread can be supplied on request

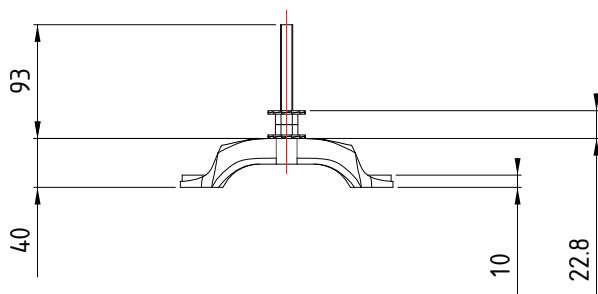


### 2 ARM 90° LIGHT DUTY POST FIXED LDP-2-90

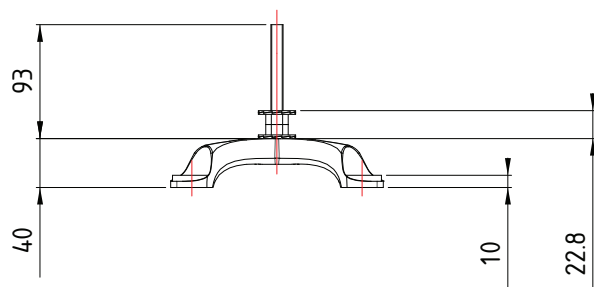
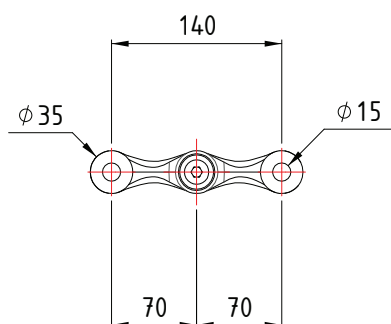
- Designed for FACE FIXED applications.
- Ideal for bolting through steel sections or bolting into concrete/timber.
- Suitable for steel supported glass facades, floors or overhead glazing.
- A4-70, M10 x 110mm all thread, M16 hex nuts and M10 wedge lock washers supplied as standard.
- M10 timber lag screw and cut to length M10 all thread can be supplied on request

See following page for technical drawing

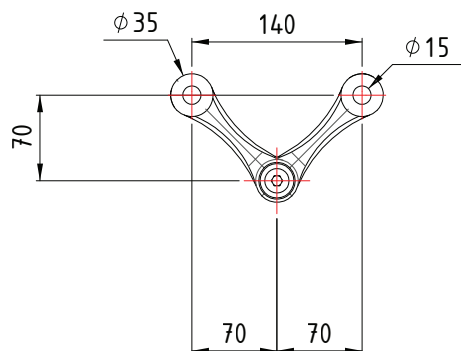
## LDP-2 Range



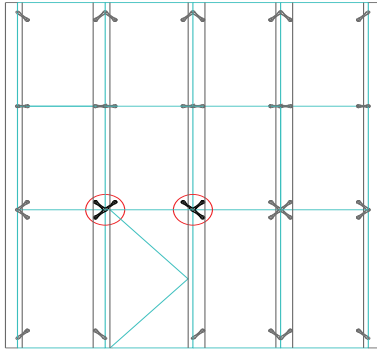
**LDP-2-180**



**LDP-2-90**



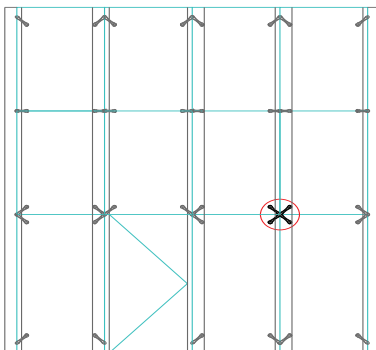
## LDP-3



### 3 ARM LIGHT DUTY POST FIXED LDP-3

- Designed for FACE FIXED applications.
- Ideal for bolting through steel sections or bolting into concrete/timber.
- Suitable for steel supported glass facades, floors or overhead glazing.
- A4-70, M10 x 110mm all thread, M10 hex nuts and M10 wedge lock washers supplied as standard.
- M10 timber lag screw and cut to length M10 all thread can be supplied on request

## LDP-4

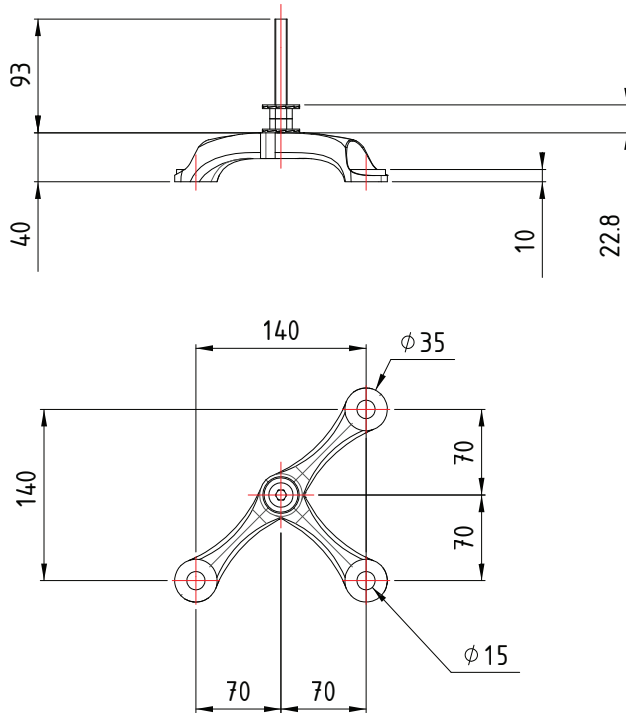


### 4 ARM LIGHT DUTY POST FIXED LDP-4

- Designed for FACE FIXED applications.
- Ideal for bolting through steel sections or bolting into concrete/timber.
- Suitable for steel supported glass facades, floors or overhead glazing.
- A4-70, M10 x 110mm all thread, M10 hex nuts and M10 wedge lock washers supplied as standard.
- M10 timber lag screw and cut to length M10 all thread can be supplied on request

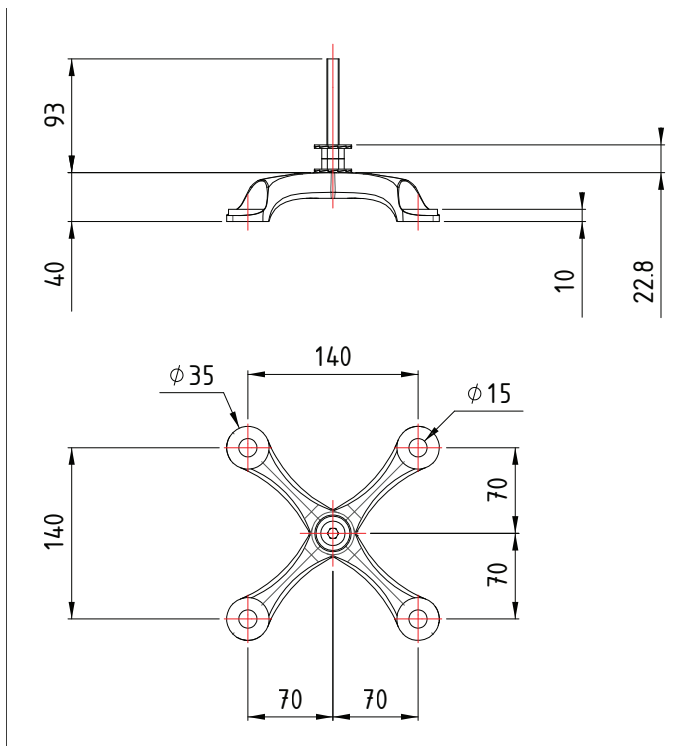
See following page for technical drawing

## LDP-3



**LDP-3**

## LDP-4



**LDP-4**