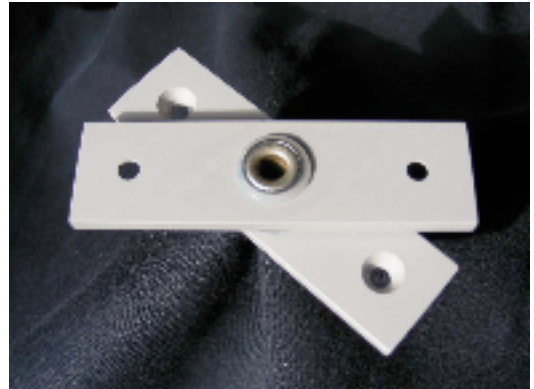
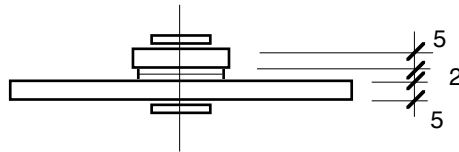
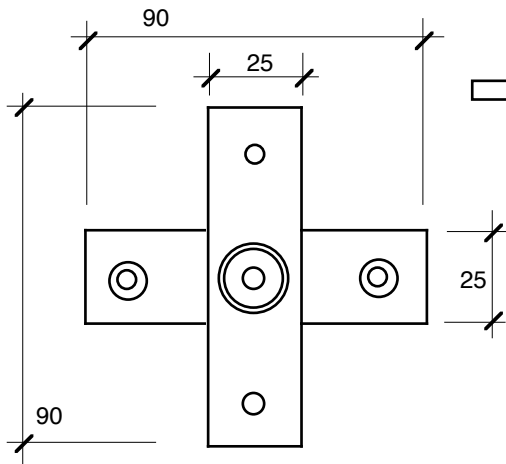
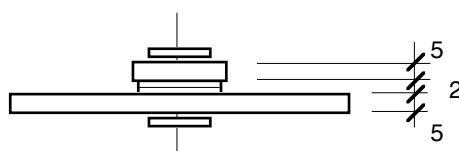
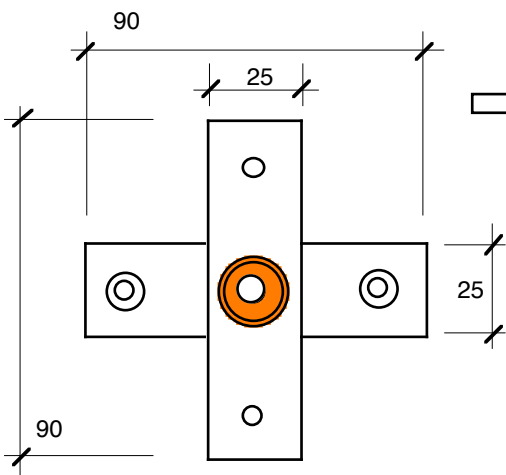
 <h1>FLAT-STRAP</h1> <p>pivots sets for 32-35mm panels</p>	<p>Latest Product</p> <p>FS35 Flat-strap</p> <p>FS35(EX) external</p>	Filing Guide - Hinges
		Info-link 1129
		SfB/UDC 30
		Masterformat 08710
		03/03/09 (print date)



Flat-Strap Pivot FS35 (half set shown for clarity)

FLAT-STRAP **FS35** 2x pivots for 35mm internal panels



FLAT-STRAP **FS35(EX)** 2x pivots for 35mm external panels

BRASS RIVET

FLAT-STRAP USES

- ceiling & duct hatches
- windows & shutters
- joinery & furniture
- laundry chutes
- awning flaps
- ventilators
- hoppers etc. etc. etc.

ADVANTAGES

- simple hand tool installation
- no special skills required
- non handed universal pivots
- 30kg (60 pound) max. load

MATERIAL & FINISHES

- parts aluminium T6 temper
- finish etch primed grey paint
- bushes Nylon 6
- rivets steel or brass
- screws not supplied

NOTES FOR DESIGNERS

- Flat-Strap pivots do not come apart. The aluminium flats are riveted together through Nylon bushes
- Flat-straps are built into structures as assembly occurs and removal of the door can be difficult.
- Detail with care and assemble prototypes for a full understanding of this product.
- Accurate and plumb work must be specified, particularly for doors in plasterboard.
- Pivoting doors reduce the clear door opening width (generally use 920 min doors between rooms)
- Pivoting doors in walls do not open a full 180° (approx.160° rotation with conventional doors)
- The pivot stile of the door swings 'in' when the lock stile swings 'out' of an enclosure.
- For external use, detail to avoid water ponding around pivots.