

September 2019

# Collection

*Contemporary  
Plywood  
Solutions*



[www.pinoliinteriors.co.nz](http://www.pinoliinteriors.co.nz)  
[www.pinoliinteriors.com.au](http://www.pinoliinteriors.com.au)

Information contained within this manual is specific to Pinoli and cannot be used with any other plywood manufacturers' product no matter how similar they may appear.



*Great architecture doesn't have to come at the cost of the environment.*

*It can work in a sustainable relationship with the environment and have minimal impact.*



## PINOLI INTERIORS COLLECTION

Pinoli Interiors panels are manufactured from Radiata Pine trees that are grown on New Zealand plantations and manufactured at our Tokoroa plywood mill.

The Pinoli Interiors range achieves the authenticity inherent to genuine wood products. The outcome is the creation of spaces characterised by warmth and feeling, that Kiwis can enjoy either at home, work or at leisure.

The Pinoli Interiors Look Book is a snapshot of the creativity that architects and designers have achieved by using the Pinoli Interiors range.

Textured (bandsawn) or natural face appearance with either a Classic or Grooved profile. This broad range ensures that the Pinoli Interiors range is suitable to a variety of residential and commercial settings, styles and finishes.

The plywood panels are untreated and suitable for staining, painting or clear coating.

The Pinoli Pre Primed (PP) range has a factory applied powder coating which allows the top coat to be immediately applied, eliminating (in most cases) the need for expensive and time consuming wet primers.

For plywood used as an exterior cladding, refer to the current Shadowclad® Specification & Installation Guide for Cavity Construction which can be downloaded from:

[www.shadowclad.co.nz](http://www.shadowclad.co.nz)  
or  
[www.shadowclad.com.au](http://www.shadowclad.com.au)



# THE INTERIOR RANGE

The Pinoli Interiors collection of plywood panels consist of untreated panels available in a classic or textured face with the option of two different grooved profiles.

Pinoli

U-GROOVE  
CLASSIC

Pinoli

U-GROOVE  
CLASSIC PP

Pinoli

U-GROOVE  
TEXTURE

Pinoli

U-GROOVE  
TEXTURE PP

Pinoli

CLASSIC

Pinoli

CLASSIC PP

Pinoli

V-GROOVE  
CLASSIC

Pinoli

V-GROOVE  
CLASSIC PP

Pinoli

TEXTURE

Pinoli

TEXTURE PP

Pinoli

V-GROOVE  
TEXTURE

Pinoli

V-GROOVE  
TEXTURE PP

# THE GROOVE RANGE

The Pinoli Interiors Groove range provides both residential and commercial users with a high visual appearance plywood panel (natural) or a traditional rustic appearance (texture) with either a 'V' or 'U' option depending on the desired finish.

Made in New Zealand from sustainably sourced Radiata Pine trees, the plywood panels provide an impact resistant and low maintenance interior lining which can be stained, painted or left in its natural state.

Pinoli

U-GROOVE  
CLASSIC

Pinoli

U-GROOVE  
CLASSIC PP

Pinoli

U-GROOVE  
TEXTURE

Pinoli

U-GROOVE  
TEXTURE PP

Pinoli

V-GROOVE  
CLASSIC

Pinoli

V-GROOVE  
CLASSIC PP

Pinoli

V-GROOVE  
TEXTURE

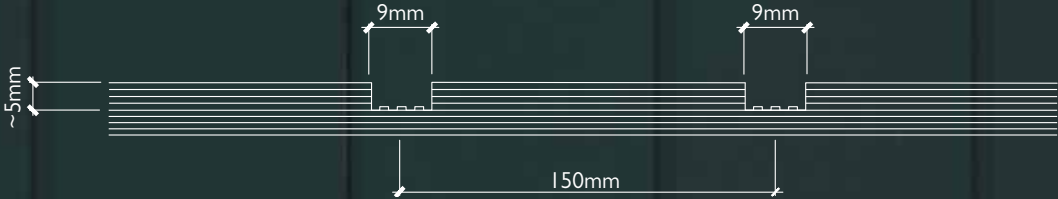
Pinoli

V-GROOVE  
TEXTURE PP

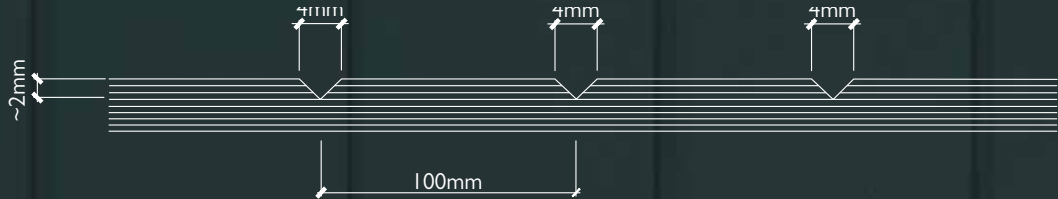
	U-Groove	V-Groove
Surface Finish	Classic or Textured	Classic or Textured
Sheet Length	2400 and 2700mm	2400 and 2700mm
Width (Overall)	1216mm	1200mm
Width (Effective)	1200mm	1200mm
Cover/Width Tolerance	+/- 1mm	+/- 1mm
Nominal Thickness	12mm	12mm
Weights (kg/m²)	6.6	6.6
R-Value (m² °C/W)	0.104	0.104
Groove Profile	9mm wide, 5mm deep at 150mm centres	4mm wide, 2mm deep at 100mm centres
Edge Profile	Ship Lap	Tongue and Groove
Treatment Available	Untreated	Untreated
Proposed Use	Internal dry applications	Internal dry applications

The Pinoli Interiors Grooved range offers either a 'V' or 'U' option.

### U-GROOVE



### V-GROOVE



# THE CLASSIC RANGE

The Pinoli Interiors Classic range provides both residential and commercial users with a high visual appearance plywood panel (natural) or a traditional rustic appearance (texture) plywood panel. The range is ideal for painting and staining or can be left in its natural state depending on the required finish.

The Pinoli Interiors plywood range is manufactured from Radiata Pine trees that are sustainably sourced from New Zealand plantations and manufactured in our Tokoroa plywood mill.

Pinoli

CLASSIC

Pinoli

CLASSIC PP

Pinoli

TEXTURE

Pinoli

TEXTURE PP

	Classic Smooth	Classic Texture
Surface Finish	Classic	Textured
Sheet Length	2400 and 2700mm	2400 and 2700mm
Width (Overall)	1200mm	1216mm
Width (Effective)	1200mm	1200mm
Cover/Width Tolerance	+/- 1mm	+/- 1mm
Nominal Thickness	12mm	12mm
Weights (kg/m²)	6.6	6.6
R-Value (m² °C/W)	0.104	0.104
Groove Profile	N/A	N/A
Edge Profile	Square Edge	Ship Lap
Treatment Available	Untreated	Untreated
Proposed Use	Internal dry applications	Internal dry applications



*The Classic range is ideal for painting and staining or left in its natural state depending on the required finish.*

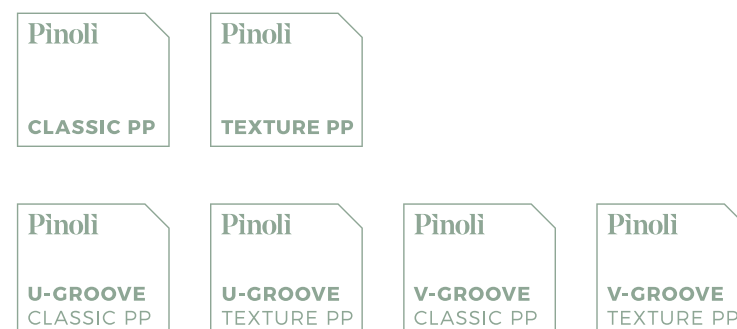
Pinoli

TEXTURE



# INTERIORS PRE PRIMED RANGE

The Pinoli Pre Primed (PP) Interiors range has a factory applied white coating which acts as a pre-primer. The result is a superior finish, crucial to the interior where close inspection is more common as well as saving time and money (in most cases) by eliminating the need for wet primers.



- High 60-80 microns film build, can be up to 2-3 times thicker than traditional wet primers.
- Continuous powder coated surface forms a drier more consistent painting surface, the result is a superior finish, great for spaces which will routinely come under close inspection.
- The Pre Primed range saves time and money by removing the need for wet primers (in most cases) ensuring a faster completion time.
- Low volatile organic compound (VOC) primer coating.

The Pinoli Pre Primed Interiors range is not suitable for use with penetrating stains.

The selection, application and maintenance of coatings is the responsibility of the building owners and the professionals that they engage. For advice on specific coating systems and their suitability for use with the Pinoli Pre Primed range, always refer to the coating manufacturer.



*Pre-primed with white undercoat ready for easy on-site top coating*

**Pinoli**  
**U-GROOVE**  
CLASSIC PP

## PROJECT 0.1

**Architect**  
DesignInc

**Project**  
University of Notre Dame  
Medical School



**Product**  
Pinoli  
U-Groove Texture

**Location**  
Perth, Australia





## PROJECT 0.2

**Project**  
Jess's  
Country-Style Kitchen



**Product**  
Pinoli  
U-Groove Classic PP

**Location**  
Sydney, Australia

Pinoli  
U-GROOVE  
CLASSIC PP





*Bring the warmth of  
natural timber into  
your home.*

Pinoli

U-GROOVE  
TEXTURE PP



PROJECT  
0.3

**Designer**  
Craig Tan  
Architects

**Project**  
Brompton  
Pavilion



**Product**  
Pinoli  
Classic

**Location**  
Melbourne, Australia





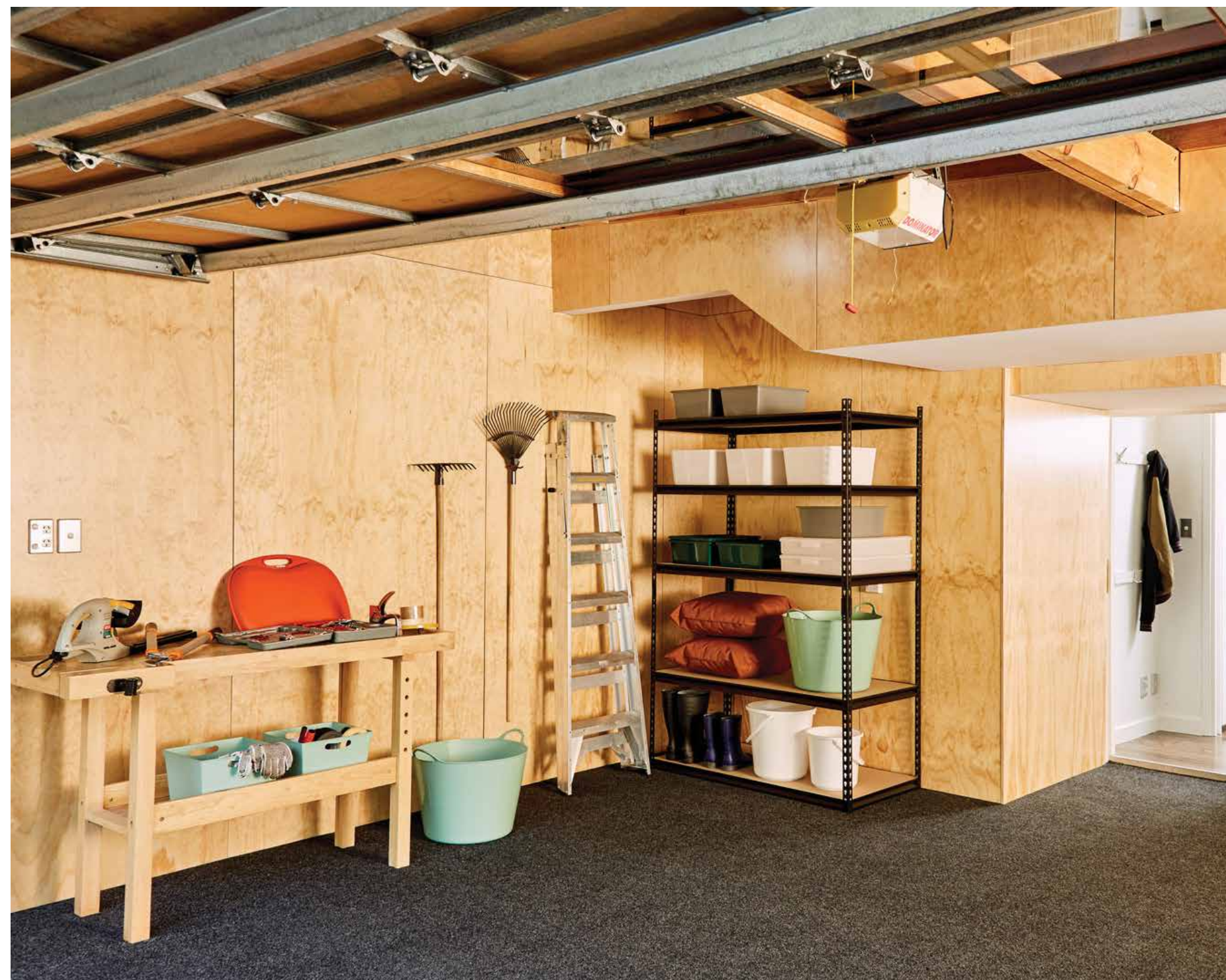
## PROJECT 0.4

### Designer

Sonya Cotter  
and AJ Bates

### Project

PlyPlay Versatile  
Living Project



### Product

Pinoli  
Classic

### Location

Auckland, New Zealand

Pinoli

CLASSIC



PROJECT  
0.5

**Project**  
Residential Home



**Product**  
Pinoli  
U-Groove Texture

**Location**  
New Zealand

Pinoli  
U-GROOVE  
TEXTURE



PROJECT  
0.6

Project  
Lush  
Cosmetics



**Product**  
Pinoli  
U-Groove Texture

**Location**  
Highpoint Shopping  
Centre, Melbourne

Pinoli  
U-GROOVE  
TEXTURE



PROJECT  
0.7

**Project**  
Matarangi Beach  
House



**Product**  
Pinoli  
V-Groove Classic PP

**Location**  
New Zealand

Pinoli  
V-GROOVE  
CLASSIC PP

*Sustainably grown and  
manufactured in New Zealand  
by New Zealanders for  
New Zealand homes.*



Pinoli

TEXTURE PP

# Pinoli

INTERIORS

Having trouble installing Pinoli Interior range please visit [pinoliinteriors.co.nz](http://pinoliinteriors.co.nz) or download the information guide to view the installation animations of common Pinoli junctions.

The information contained in this document is current as at September 2019 and is based on data available to CHH Plywood at the time of going to print.

All photographic images are intended to provide a general impression only and should not be relied upon as an accurate example of Pinoli Interiors installed in accordance with this document or NZ Building Code compliance documents.

This publication replaces all previous CHH Plywood design information and literature relating to Pinoli Interiors. CHH Plywood reserves the right to change the information

contained in this document without prior notice. It is your responsibility to ensure that you have the most up to date information available, including at the time of applying for a building consent. You can call toll free on 0800 326 759 or visit [chhply.co.nz](http://chhply.co.nz) to obtain current information.

CHH Plywood has used all reasonable endeavours to ensure the accuracy and reliability of the information contained in this document. However, to the maximum extent permitted by law, CHH Plywood assumes no responsibility or liability for any inaccuracies, omissions or errors in this information nor for any actions taken in reliance on this information.

Private Bag 92-102  
Victoria Street West  
Auckland 1142  
New Zealand

**Freephone: 0800 326 759**

[pinoliinteriors.co.nz](http://pinoliinteriors.co.nz)

September 2019

20190916-2.02

PO Box 425  
Box Hill  
Victoria 3128  
Australia

**Freephone: 1800 338 463**

[pinoliinteriors.com.au](http://pinoliinteriors.com.au)

