



platon

KEEP IT DRY.

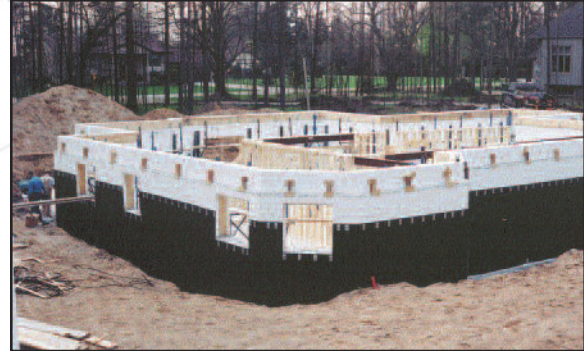
ACE

WATERPROOFING
PROPRIETARY LIMITED

"Proudly South Australian"

Platon is IDEAL on Insulated Concrete Forms

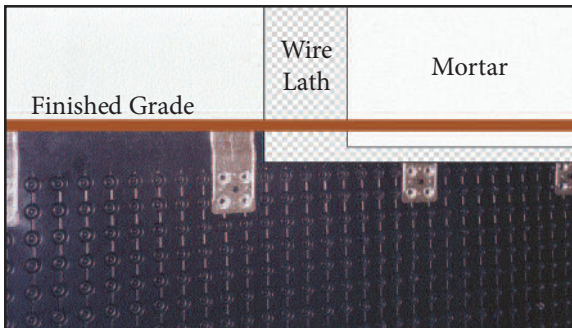
- Performance proven since 1994 with zero Platon related leaks reported
- "Stand alone" system
- Easily installed over oxidised, wet or dirty block
- Bridges 5-10mm gaps
- No temperature or weather restrictions



Follow instructions for concrete foundations

- Caulk must be foam compatible *E.G. Foam panel adhesive*
- Screw into the ICF web or fastening point instead of using concrete nails
- Speedclips - use the fastening hole that best lines up with the ICF web.
- Speedstrips can be screwed into each web anywhere in the "Fastening Area".

(Tip - A collated screw gun speeds installation)



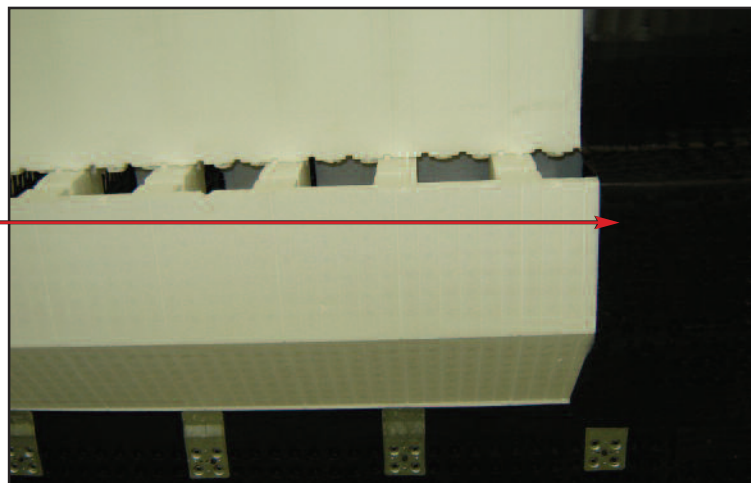
To transition from Platon to exposed foam:

- Apply galvanized metal lath - screw into the ICF webs
 - Lath covers exposed foam and extends 50mm or more over the Platon
 - Parge lath with mortar mix typically used on foundations
- Dirt can not get behind the Platon so caulk is not required*

Brick ledges on ICF foundations usually protrude from the foundation.

- Fasten Platon to the vertical wall below the brick ledge protrusion.
- Apply a "peel and stick" waterproofing membrane to cover the protrusion and horizontal brick ledge, extending both up the wall behind the brick and over the top of the Platon

Follow "peel and stick" manufacturers instructions for surface preparation and temperature restrictions



"It is nearly impossible to find a leak in an ICF foundation without destroying the foam - do it right the first time with Platon"