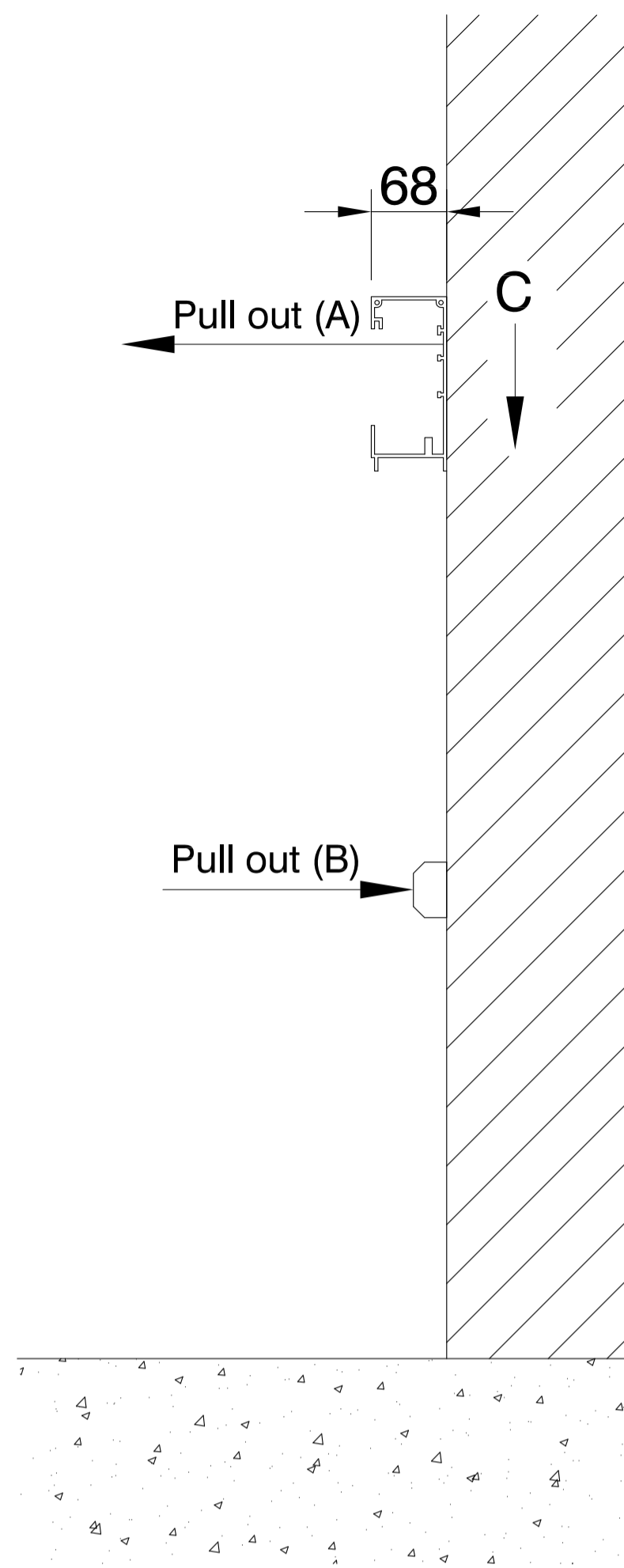


Stanchion Mounted Rail

Positions on points A & B shall be capable of reacting loads in horizontal directions shown, the magnitude of load is 2.8kN. An additional force on arrow C is subject to a load of 1.8kN.

The floor must be adequate in taking a push-in force of 4.2kN on arrow D and a pull-out force of 3.3kN on arrow E respectively. Note 4 off fixings per support pillar are required



Wall Mounted Rail

Positions on points A & B shall be capable of reacting loads in horizontal directions shown, the magnitude of load is 2.8kN.

An additional force on arrow C is subject to a load of 1.8kN.

Notes:

1. It is the responsibility of the customer to ensure that the strength of the wall, staircase & landings (whichever applicable) are adequate to accept the loads imposed.
2. Loads stated are static & allow for worst case loading condition.
3. Fixings are to be made at nominal pitches of 600mm along the length of rail

NOTE - THIS DRAWING IS FOR GUIDANCE ONLY AND MUST NOT BE USED AS A PROPER WORKING DRAWING. FOR ENQUIRIES ABOUT THE LIFT PLEASE CONTACT THE **Platform Lift Co** - TEL 1300 884960

Platform Lift Company

Unit 34, 49/51 Mitchell Road
 Brookvale NSW 2100
 Tel - 1300 884960
 Fax - +61 2 85805048
 E-mail - info@platformliftco.com.au
 website - www.platformliftco.com.au

TITLE

Cama C7 Straight Stairlift - Pull Out Loads

DWG NO.

CAMA C7 - LOADS

REV

B

SCALE

NTS

DATE

27/05/2011

DRAWN

CH