

Awning & Casement Window

**PROVIDES ENERGY-EFFICIENT INTERIOR
TEMPERATURES ALL YEAR ROUND.**

Thermally Broken Awning/ Casement Window

Alspec's ThermAFrame Awning / Casement window system is an energy efficient window option that utilises the latest in European Polyamide Thermal Break technology.

Combined with Australian design principles this achieves the best possible results in energy rating in a system that is easy to fabricate and install. Its versatility allows seamless integration into ThermAFrame Centre Pocket and Flush Glazed Systems to achieve the most challenging structural and energy requirements. It has been designed to accommodate high performance double glazed units that can maximise the performance of the building envelope.

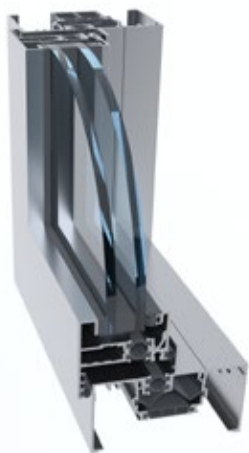
Available in a 56mm sash featuring a 'Double Strut' Thermal Break design the ThermAFrame Awning / Casement allows architects to minimise the transfer of heat or cold across a window with a standard system. Glazing could not be simpler with the colour coded wedges from standard Alspec systems being utilised to deal with the many diverse glass options.

Featuring overlapping internal and external seals, the ThermAFrame Awning / Casement Window is the preferred choice where superior weather performance is required.

A range of glass thickness options up to 32mm allows the system to be configured for excellent thermal performance. The system is complemented with a range of heavy duty Stainless Steel Friction Stays to ensure maximum performance with large, heavy IGUs.

Sashes can be operated with manual or electric chainwinders or cam handles, locking or non-locking. With the use of our chainwinder adaptor insect and security screens can easily be added from the inside of the building.

CAD Cross Sections



Key Features

- Excellent 'Uw' values down as low as 2.7
- Utilises a strong 'Double Strut' thermal break construction for maximum strength in the sash
- Wide glazing pocket accepts double glazed options up to 32mm
- Complemented by a range of Heavy Duty Stainless Steel Friction Stays
- Integrated screening options available
- Sash features internal and external weather seals for maximum performance
- Electric chainwinder option
- Colour coded glazing wedges for ease of identification for glazing
- Integrates with ThermAFrame Centre Pocket and Flush Glazed Systems

Technical Specifications

Frame Dimensions	
Option 1	Sash width 56.4m
Maximum Recommended Sizes - Casement	
Height	1500mm
Width	800mm
Thermal Performance	
SHGC range DG	0.21 - 0.40
Glazing Details	
Double Glazed	22 - 32mm
Maximum Recommended Sizes - Awning	
Height	1800mm
Width	1200mm
Acoustic Performance	
6.38/12/6.38mm IGU	37 (-2,-6) dB
Uw range DG	2.7 - 3.4
Compatible Systems	
101.6mm Centre Glazed Thermally Broken Framing	
150mm Centre Pocket Thermally Broken Framing	
101.6mm Flush Glazed Thermally Broken Framing	
150mm Flush Glazed Thermally Broken Framing	

