



WET ROOM SOLUTIONS

**ACCOLADE Foothold
ACCOLADE Safe
ACCOLADE Plus
WALLFLEX**

COMMERCIAL FLOORING &
WALLING – VINYL SHEET

WET ROOM SOLUTIONS FOR WALLS

WALLFLEX

ACCOLADE PLUS

Practical

- Polyurethane coating aids maintenance.
- Clean, simple design for uncomplicated look or the addition of a frieze if desired.
- 1.5 metre width ideal for finishing at dado rail height for ease of installation

- Suitable for Wall & Floor applications.
- Available in 28 colours.
- Protective polyurethane reduces initial and ongoing maintenance and increases scuff resistance.

Durable

- Polyurethane coating reduces maintenance costs and protects long term appearance.
- Homogeneous construction for excellent dent and gouge resistance.

- Homogeneous construction for excellent dent and gouge resistance.

Applications

- Hospital
- Aged Care
- Health Care
- Education
- Light Industrial
- Mercantile
- Hospitality

- Hospital
- Aged Care
- Health Care
- Education
- Light Industrial
- Mercantile
- Hospitality

TECHNICAL DATA

		WALLFLEX	ACCOLADE PLUS
Type of floor covering	EN 649	Homogeneous sheet vinyl	Homogeneous sheet vinyl
Manufactured in		Australia	Australia
Overall thickness	EN 428	1.25mm	2.0mm
Wear layer thickness	EN 429	1.25mm	2.0mm
Roll dimensions	EN 426	1.5m x 20m	1.83m x 16m
Polyurethane		Yes PUR	Yes 
Wear resistance	EN 660-2	Group 'M'	Group 'P'
Best Practice PVC (Manufactured to meet GBCA guidelines)		YES	YES
GreenTag™ Certified		GreenTag ^{Cert} ™ Gold, GreenRate Level A	GreenTag ^{Cert} ™ Silver, GreenRate Level A
LOW TVOC TVOC Emissions	EN 13419-1	≤150µg/m ² /hr (GBCA limit ≤ 500µg/m ² /hr)	≤150µg/m ² /hr (GBCA limit ≤ 500µg/m ² /hr)
Fire resistance	AS /NZS 3837 Cone Calorimeter Ave specific extinction area	Group 2 <250m ² /kg	Group 3 <250m ² /kg
Classification	EN 685	Commercial: 34 (Very Heavy)  Industrial: 43 	Commercial: 34 (Very Heavy)  Industrial: 43 



green building council australia
MEMBER

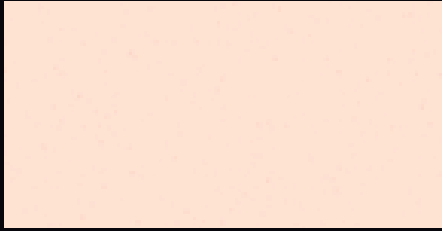
Visit www.armstrongflooring.com.au or contact Customer Service 1800 632 624 for technical data, installation, cleaning and maintenance instructions.

Please note: Recommendations are for guidance only, refer to relevant local, state, and federal construction codes and standards for requirements.

FOR WALLS

WALLFLEX

(1.25mm gauge x 1.5m x 20m sheet)



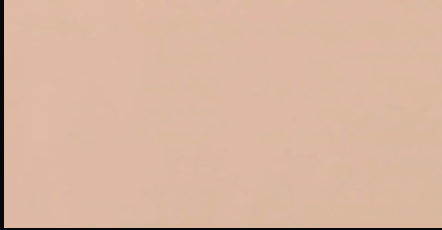
DOVE WHITE



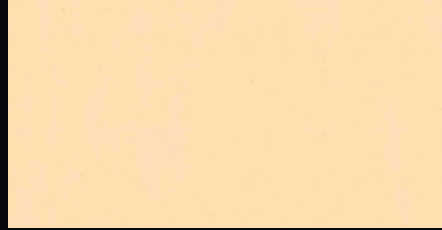
ICE WHITE



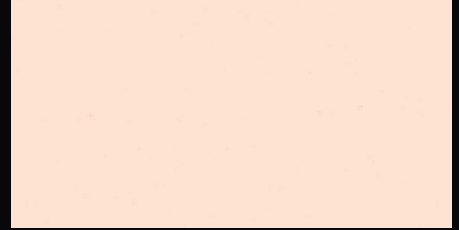
BLUE HARMONY



MUSHROOM



ACID GREEN



COOL WHITE



NEUTRAL WHITE



BLUE GREY



LINEN

ACCOLADE PLUS

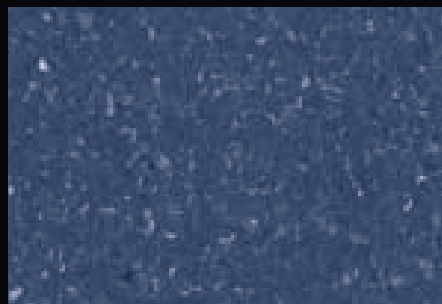
(2.0mm gauge x 1.83m x 16m sheet)



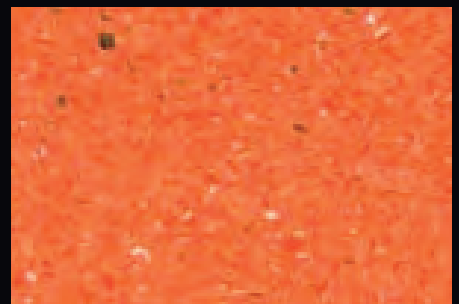
(available in 28 colours for walls & floors)



LEAF GREEN



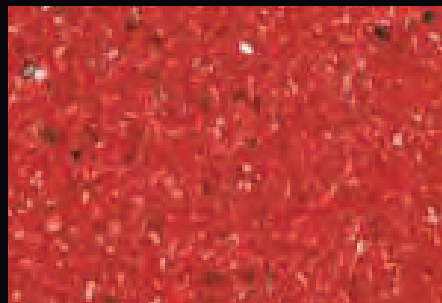
MISTY BLUE



MANDARINE



SOFT SUN



BANKSIA RED



Variations may occur between photographic images, samples and batches in terms of colour, shade, pattern or similar.

FOR FLOORS

ACCOLADE FOOTHOLD

(2.0mm gauge x 1.83m x 16m sheet)

R11* B* V* SLIP RESISTANCE



BELLS BLUE



CAPPUCCINO



SAND GREY



CEDUNA WHITE



BONDI SAND



STERLING GREY

- Recommended for use in 'wet barefoot' areas.
- Incorporating **PUR³** Accolade Foothold offers higher levels of slip and stain resistance.
 - R11 (Oil Wet Ramp)
 - B (Wet barefoot)
 - V (Wet Pendulum)



Australian Made

Please note: Recommendations are for guidance only, refer to relevant local, state, and federal construction codes and standards for requirements.

Variations may occur between photographic images, samples and batches in terms of colour, shade, pattern or similar.

FOR FLOORS

ACCOLADE SAFE

(2.0mm gauge x 1.83m x 16m sheet)

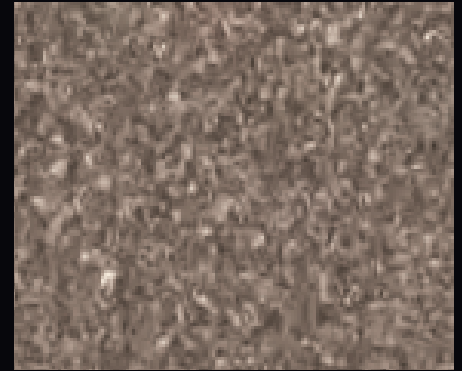
R10* B* W* SLIP RESISTANCE



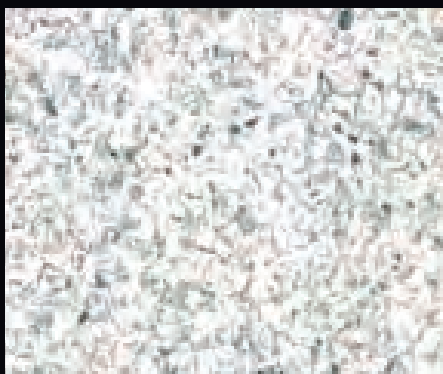
SPICE WHITE



CAPPUCCINO



IRONBARK



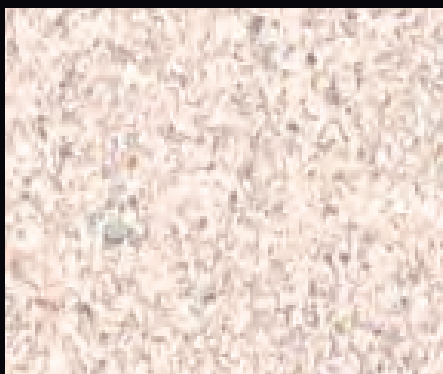
WHITEHAVEN



DARLING GREY



MURRAY CLAY



CEDUNA WHITE



SAND GREY



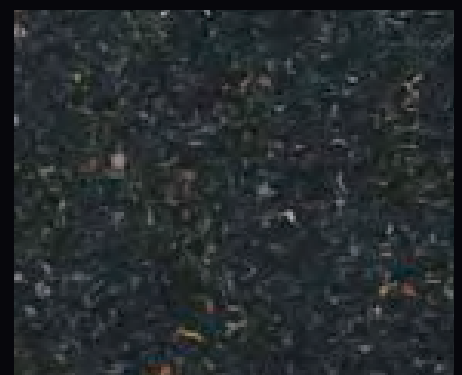
BLACK OPAL



STERLING GREY



NAPIER GREY



BLACK ROCK

Variations may occur between photographic images, samples and batches in terms of colour, shade, pattern or similar.

FOR FLOORS

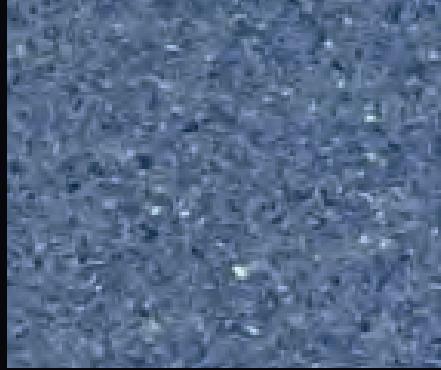
ACCOLADE SAFE

(2.0mm gauge x 1.83m x 16m sheet)

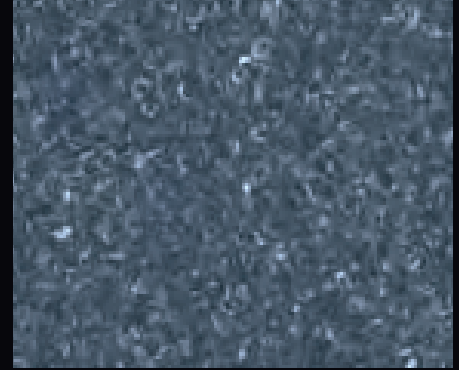
R10* B* W* SLIP RESISTANCE



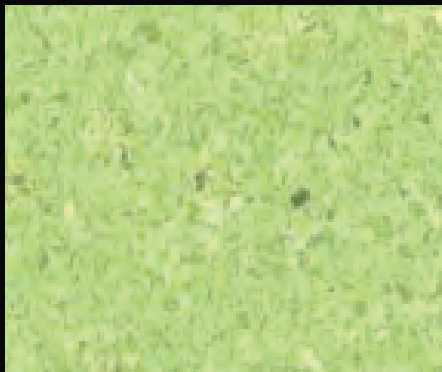
DAINTREE GREEN



BELLS BLUE



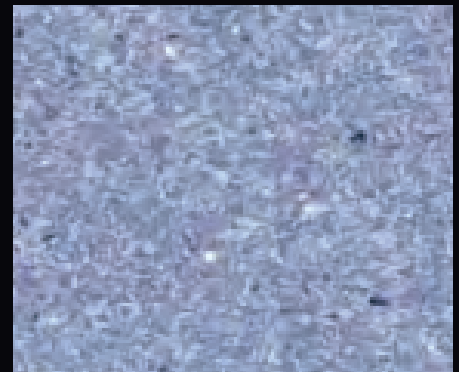
SORRENTO BLUE



LEMONGRASS



WHITSUNDAY BLUE



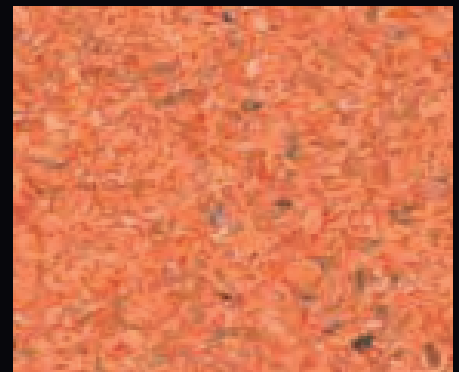
BYRON BLUE



CITRUS YELLOW



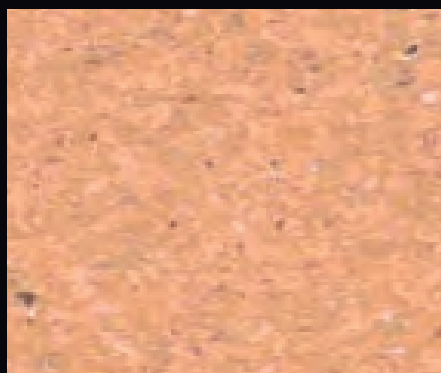
KALGOORLIE GOLD



CARNARVON RED



BONDI SAND



CAPRICORN BEIGE



Variations may occur between photographic images, samples and batches in terms of colour, shade, pattern or similar.

WET ROOM SOLUTIONS FOR FLOORS

ACCOLADE FOOHOLD

ACCOLADE SAFE

Practical

- Polyurethane surface to aid maintenance and provide additional resistance against staining.
- Exclusive homogeneous formulation including replenishing polyurethane throughout the thickness of the floor.
- Colours to mix and match with Accolade Safe & Accolade Plus.

- A “safety floor” without impregnated silicon carbide chips that attract and hold dirt and increase the maintenance effort and wear and tear on cleaning equipment.
- 23 colours to match Accolade Plus and complement your interior design scheme.

Durable

- Combination of aluminium oxide and polyurethane provides added slip resistance and protects long term appearance.
- Homogeneous construction for excellent resistance.

- Homogeneous construction for excellent dent and gouge resistance.
- The embossed surface (reduces aquaplaning), while aiding slip resistance.

Applications


Recommended for wet barefoot areas of

- Hospital
- Aged Care
- Health Care
- Education
- Hospital
- Aged Care
- Health Care
- Education
- Light Industrial
- Mercantile
- Hospitality

TECHNICAL DATA

ACCOLADE FOOHOLD

ACCOLADE SAFE

Type of floor covering	EN 649	Homogeneous sheet vinyl	Homogeneous sheet vinyl
Manufactured in		Australia	Australia
Overall thickness	EN 428	2.0mm	2.0mm
Wear layer thickness	EN 429	2.0mm	2.0mm
Roll dimensions	EN 426	1.83m x 16m	1.83m x 16m
Polyurethane		Yes 	No
Wear resistance	EN 660-2	Group 'M'	Group 'M'
Best Practice PVC (Manufactured to meet GBCA guidelines)		Under review	Yes
GreenTag™ Certified		Under review	GreenTag ^{Cert} ™ Silver, GreenRate Level A
LOW TVOC TVOC Emissions	EN 13419-1	≤150µg/m2/hr (GBCA limit ≤ 500µg/m2/hr)	≤150µg/m2/hr (GBCA limit ≤ 500µg/m2/hr)
Slip resistance	AS /NZS 4586 Appendix A: Wet pendulum Appendix C: Wet/barefoot ramp Appendix D: Oil-wet ramp *CSIRO Tested, for detail refer individual Test Reports	V* B* R11*	W* B* R10*
Fire resistance	ISO 9239-1 Critical radiant flux Smoke development rate	≥ 8 kW/m ² < 750% minutes	≥ 11 kW/m ² < 750% minutes
Classification	EN 685	Commercial: 34  Industrial: 43 	Commercial: 34  Industrial: 43 



green building council australia
MEMBER

Visit www.armstrongflooring.com.au or contact Customer Service 1800 632 624 for technical data, installation, cleaning and maintenance instructions.

Please note: Recommendations are for guidance only, refer to relevant local, state, and federal construction codes and standards for requirements.

Armstrong World Industries (Australia) Pty Ltd
29 – 39 Mills Road, Braeside, 3195 Victoria Australia

For further information and samples:
AUSTRALIA
Freecall 1800 632 624
Email customer_services@armstrong.com or contact us on the web

www.armstrongflooring.com.au

Armstrong®



Australian Made