

# The importance of selecting a better **wrap**

# Modern building techniques and materials have made your choice of wrap more important than ever.

Where you live, how much insulation you have and what your home is made of, all affect your choice of wrap.

In cool climates, condensation generated inside the home, as well as moisture entering from outside, can increase the risk of mould growing on your house frame. Hidden behind the walls, it can become a health risk to the very young, elderly, or those with asthma. It can also rot timber, and stain your walls and ceilings. Fortunately, Fletcher Insulation has a range of wraps that can help prevent condensation, and shield your home from water-related damage.

In warmer regions, Sisalation® reflective wraps can keep your home cooler in summer, warmer in winter, and help your insulation to work better all year round. You'll enjoy the comfort, and the savings you'll make on your energy bills too.

So don't compromise your safety or your comfort, choose Sisalation®, The Original and The Best™.



## Why Wrap up?

### A MORE COMFORTABLE HOME

Whether you are renovating or building a new home, Sisalation® can help stop draughts, dust and wind driven rain so your home stays cooler in summer, warmer in winter, and more comfortable all year round.

### A HEALTHIER HOME

Moisture in your home can cause damaging condensation, rot and mould. Sisalation® can improve your indoor air quality, help prevent the causes of condensation and protect your family's health.

### AN ENERGY EFFICIENT HOME

Sisalation® foil products can protect your home by reflecting up to 95% of the sun's radiant heat. They also help stop draughts and dust entering your home so your insulation batts can work better.

Better performing insulation means your cooling and heating will work more efficiently and be cheaper to run. And as you save money, you'll help save the environment too.



### **FIRE SAFETY**

Sisalation® is suitable for use in bushfire areas and can help protect your home from ember attack. Sisalation® can be used for Bushfire Attack Level (BAL) of 0 – 40 for roof sarking and 0-FZ for wall wrap.

### **PEACE-OF-MIND**

Fletcher Insulation do not compromise on quality. For your peace-of-mind, we guarantee all Sisalation® products with a 10 year product warranty.

### **PROTECTION WHILE YOU BUILD**

You would normally install Sisalation® as you build your home, but it can also be installed when you're replacing your walls or roof. During construction, it can protect your frame from the elements and allow tradies to work, before any exterior covering goes on.

### **EASY DIY INSTALLATION**

Sisalation® products are strong, laminated membranes designed for maximum durability and increased tear resistance, so DIY installation is quick and easy.



# Understanding the difference between wraps for condensation management

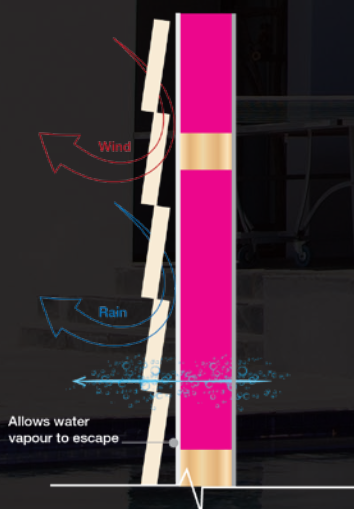
## Vapour **Permeable** Membranes



**Recommended for Cooler Regions to help manage condensation. It allows vapour to escape the building, whilst helping stop vapour, water, and wind from entering.**

### Vapour Permeable products:

- Allow moisture vapour to escape from the home without condensing on the inside of the building frame
- Protect the home from water penetration
- Help improve the performance of bulk insulation by reducing wind and dust penetration
- Protect the home from water penetration during construction



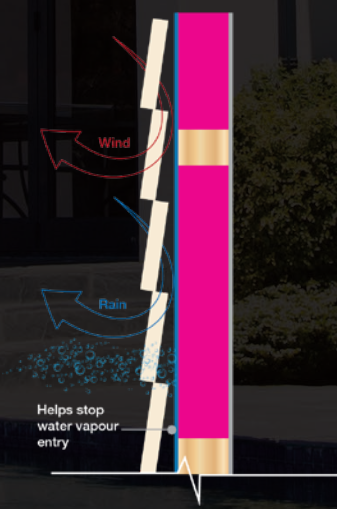
## Vapour **Barrier** Membranes



**Recommended for Warmer Regions to help stop vapour, water, and wind entering the building.**

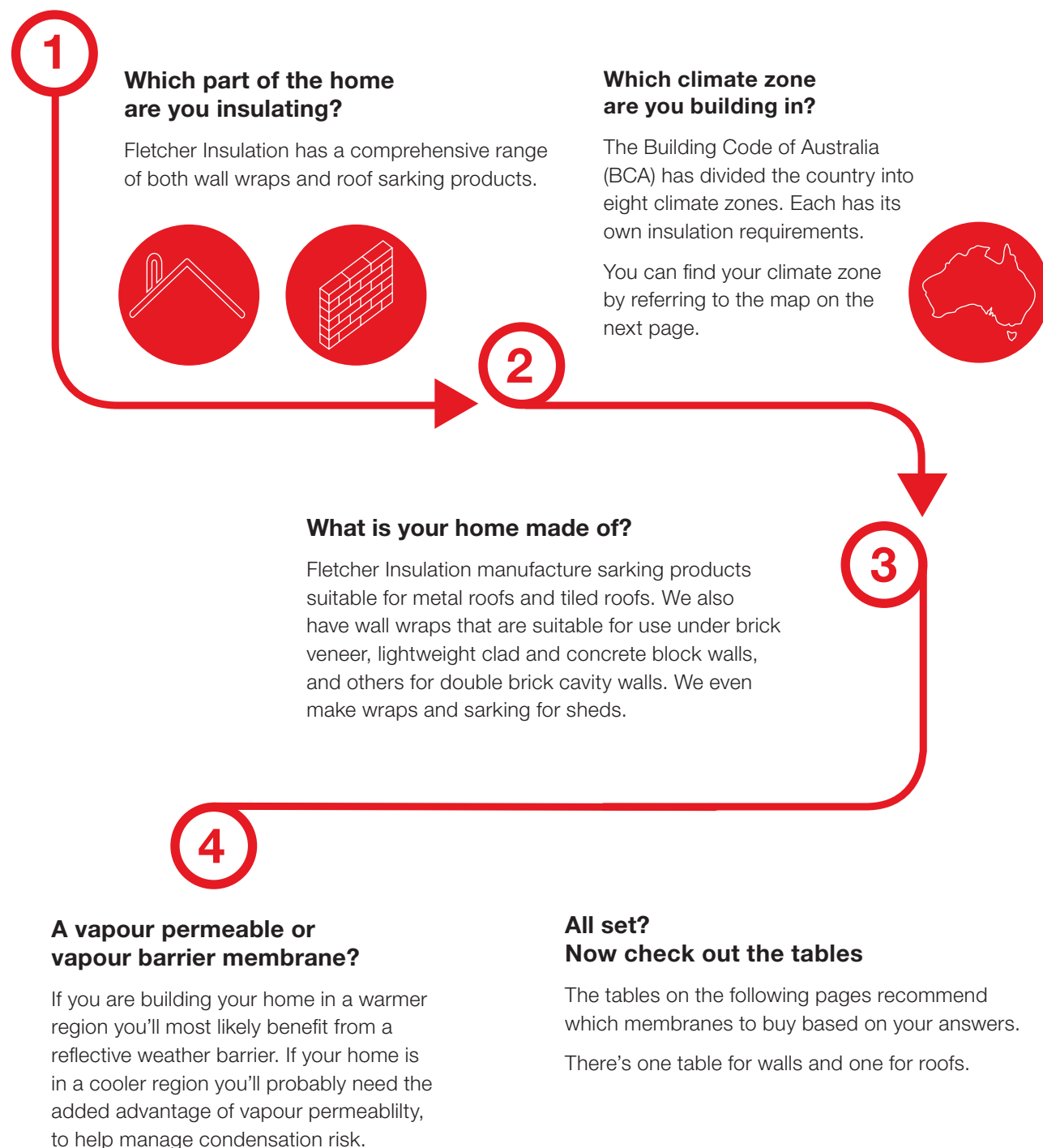
### Non-permeable, vapour barrier products:

- Protect the home from water penetration
- Reduce wind and dust penetration
- Protect the home from water penetration during construction



# How to select the best wrap

Selecting the best product for your project isn't rocket science, but you will have to make some decisions. To help, we've provided this step-by-step guide below, and more detailed tables on the following pages. Answer these 4 questions and you'll be able to select the best Sisalation® product in a snap!



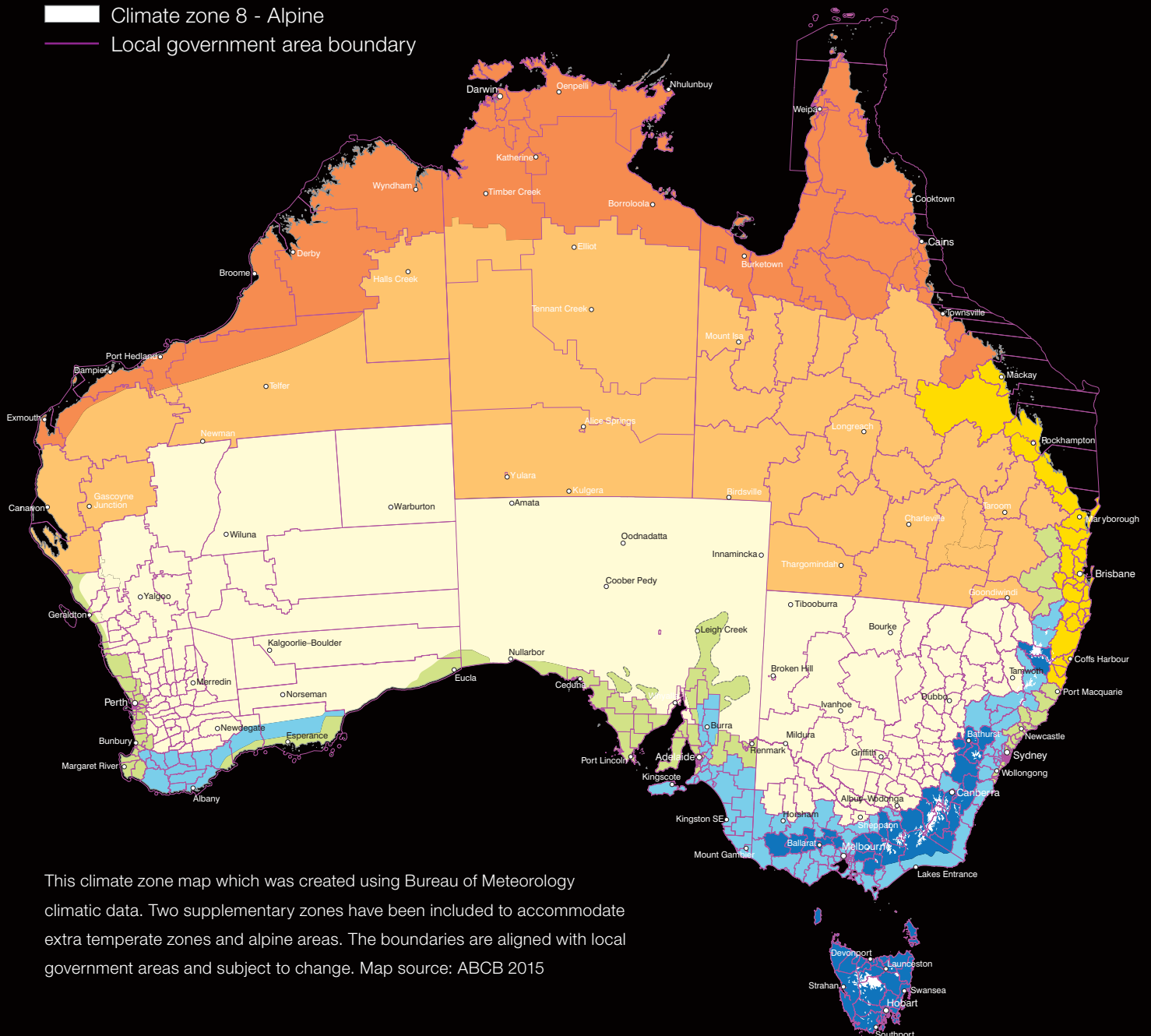
# Which climate zone are you building in?

**Knowing your climate zone is crucial to selecting the best Sisalation® product for your project.**

Australia's varied climate means that different locations around the country have different heating and cooling requirements. The Building Code of Australia (BCA) has divided the country into eight climate zones, and has determined what level of insulation is required in each.

**Use the map below to determine your climate zone, then check the table to choose the best Sisalation® product for your location and construction type.**

- Climate zone 1 - High humidity summer, warm winter
- Climate zone 2 - Warm humid summer, mild winter
- Climate zone 3 - Hot dry summer, warm winter
- Climate zone 4 - Hot dry summer, cool winter
- Climate zone 5 - Warm temperate
- Climate zone 6 - Mild temperate
- Climate zone 7 - Cool temperate
- Climate zone 8 - Alpine
- Local government area boundary



This climate zone map which was created using Bureau of Meteorology climatic data. Two supplementary zones have been included to accommodate extra temperate zones and alpine areas. The boundaries are aligned with local government areas and subject to change. Map source: ABCB 2015



# Choose the best **wrap** for your project



## WALL

CLIMATE ZONE	CONSTRUCTION TYPE	PRODUCT	DESCRIPTION
1	Single Brick Veneer with Cavity Wall, Lightweight Cladded Walls, Concrete and Block Wall	Sisalation® Tuff Wrap™ Wall Wrap: Standard (MD) Vapour & Water Barrier	Medium Duty reflective foil with blue anti-glare coating on one side. Exceptional resistance to weather and tearing.
	Double Brick Cavity	Sisalation® Foam Cell Multipurpose Vapour & Water Barrier	3-in-1 multipurpose solution: insulation + thermal break + vapour barrier. Reduces thermal bridging and conductivity between building elements.
	Shed	Sisalation® Foam Cell Shed Liner Vapour & Water Barrier	Foam core encapsulated in reflective foil. Advanced thermal performance. Extra heavy duty strength and durability.
2, 3, 4, 5	Single Brick Veneer with Cavity Wall	Sisalation® Tuff Wrap™ Wall Wrap: Standard (MD) Vapour & Water Barrier	Medium Duty reflective foil with blue anti-glare coating on one side. Exceptional resistance to weather and tearing.
		Sisalation® Vapawrap™ Wall Wrap (Light Wall) Vapour Permeable, Water Barrier	Light and easy to handle, with high strength and durability. Superior breathability and hold out to wind and water.
		Sisalation® Tuff Wrap™ Wall Wrap: Breather Vapour Permeable, Non-Water Barrier	Reflective foil with blue anti-glare coating on one side. Pin-perforated for permeability.
	Lightweight Cladded Walls, Concrete and Block Wall	Sisalation® Vapawrap™ Wall Wrap (Light Wall) Vapour Permeable, Water Barrier	Light and easy to handle, with high strength and durability. Superior breathability and hold out to wind and water.
	Double Brick Cavity	Sisalation® Foam Cell Multipurpose Vapour & Water Barrier	3-in-1 multipurpose solution: insulation + thermal break + vapour barrier. Reduces thermal bridging and conductivity between building elements.
	Shed	Sisalation® Foam Cell Shed Liner Vapour & Water Barrier	Foam core encapsulated in reflective foil. Advanced thermal performance. Extra heavy duty strength and durability.
6, 7, 8	Single Brick Veneer with Cavity Wall	Sisalation® Vapawrap™ Wall Wrap (Light Wall) Vapour Permeable, Water Barrier	Light and easy to handle, with high strength and durability. Superior breathability and hold out to wind and water.
		Sisalation® Tuff Wrap™ Wall Wrap: Breather Vapour Permeable, Non-Water Barrier	Reflective foil with blue anti-glare coating on one side. Pin-perforated for permeability.
	Lightweight Cladded Walls, Concrete and Block Wall	Sisalation® Vapawrap™ Wall Wrap (Light Wall) Vapour Permeable, Water Barrier	Light and easy to handle, with high strength and durability. Superior breathability and hold out to wind and water.

## ROOF

CLIMATE ZONE	CONSTRUCTION TYPE	PRODUCT	DESCRIPTION
1, 2, 3, 4, 5, 6, 7, 8	Tile Roof	Sisalation® Tile Roof (HD) Vapour & Water Barrier	Heavy Duty single sided reflective foil kraft paper laminate, bonded to polymer weave. Concrete and terracotta tile roofs.
	Metal Roof	Sisalation® Metal Roof (MD & HD) Vapour & Water Barrier	Double layered kraft paper reinforced by yarn, with reflective aluminum foil and anti-glare coating. Helps reduce noise generated in metal roofs
		Sisalation® Vapawrap™ Metal Roof* Vapour Permeable, Water Barrier	Installed over Permastop® Building Blanket protecting against wind washing and water penetration.
	Shed Roof	Sisalation® Foam Cell Shed Liner Vapour & Water Barrier	Foam core encapsulated in reflective foil. Advanced thermal performance. Extra heavy duty strength and durability.

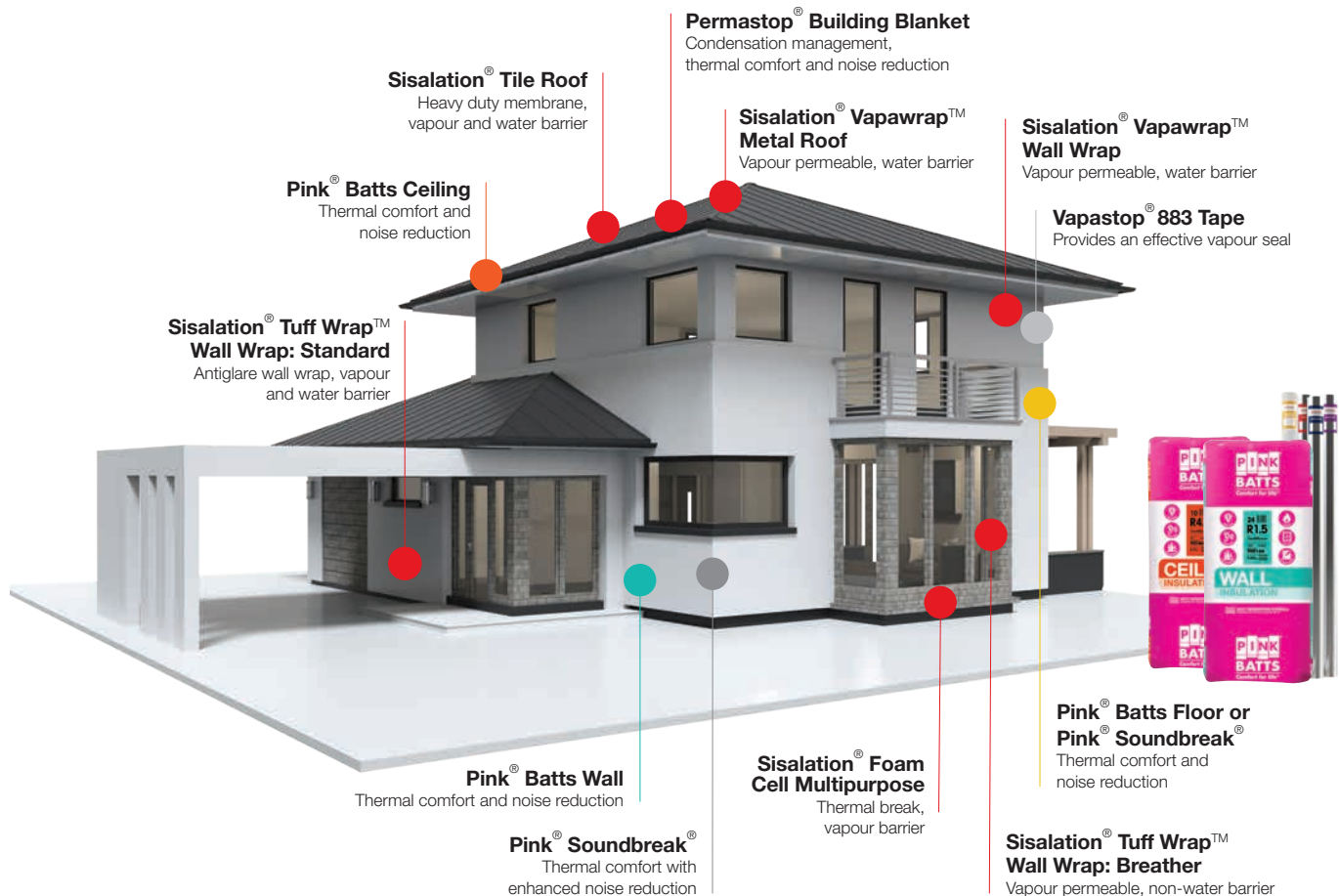
\*Sisalation® Vapawrap™ Metal Roof is not recommended for Climate Zone 1.

# There's a Sisalation product for every home under the sun.

Fletcher Insulation manufactures and supplies a comprehensive range of Sisalation® products – each designed for a specific climate zone, application, and building type.

We began manufacturing in Australia in the 1940's, and over the years our wrap products have been used to protect millions of Australian homes and thousands of architecturally significant buildings.

So don't compromise, choose Sisalation®, The Original and The Best™.



## Why Choose Fletcher Insulation?

Fletcher Insulation really is a one-stop shop for all your thermal and acoustic insulation needs. We manufacture and distribute Sisalation®, Pink® Batts, and many other of Australia's most loved and trusted residential and commercial insulation brands.

We pride ourselves on continually improving our processes to provide products of the highest national and international standards, and technical support of extraordinary value to our customers.

Put us to the test. For help finding the perfect insulation products for your project, simply call, email or visit our website.

### For further information

Call 1300 654 444

Email [info@insulation.com.au](mailto:info@insulation.com.au)

Visit [insulation.com.au](http://insulation.com.au)



© Fletcher Insulation Pty Limited, 2019. The information contained within this bulletin is intended as a guide for information only and is subject to change without notice. Fletcher Insulation does not invite any person to act or rely upon such information. Before application in a particular situation, Fletcher Insulation recommends that you obtain appropriate independent qualified expert advice confirming the suitability of product(s) and information in question for the application proposed. To the extent permitted by law, Fletcher Insulation disclaims all liability (including liability for negligence) for all loss and damage resulting from the direct or indirect use, or reliance on, the information provided in this bulletin. ™ and ® are registered trademark of Fletcher Insulation Pty Limited ACN 001 175 355, a member of the Fletcher Building Group.