

ZEPHIR[®]
EVOLUTION
COST EFFECTIVE LARGE
FORMATTED CLADDING

ZEPHIR® EVOLUTION

COST EFFECTIVE LARGE FORMATTED CLADDING

NEW





Building on our 25 years of experience, Terreal introduces the latest addition to its ventilated wall-cladding solutions: Zephir Evolution. A cost-effective, single skin, large module rain screen, easy to install on horizontal support rails.

STRENGTHS

- FLEXIBLE AND
VERSATILE

 - Easy and fast to install
 - Lightweight: 32kg/m²
 - Flexible: Horizontal and vertical cut-outs easily made on site
 - Horizontal support rail designed to reduce the size of the vertical sub-frame
 - Installation on timber or metal frames
- ROBUST AND
EFFICIENT

 - Q4 reinforced version
 - Allows for outside thermal insulation, even really thick ones
 - Acoustic version
- BEAUTIFUL AND
DURABLE

 - Exists in lengths up to 1200mm
 - Horizontal joints hidden by overlap
 - 13 colours, 5 finishes
 - Made in France

ACCESSORIES



Q4 reinforced

Acoustic

Twin

DIMENSIONS AND PERFORMANCE

Products	Dimensions H x L x Th. (mm)	Fitting pattern H x L (mm)	Unit weight (kg)	Weight per m ²	Impact performance	Wind load performance Vertical supports on-centre	
						1200mm	600mm
ZEPHIR® Evolution	310 x 595 x 14	300 x 600	6,2	32	Up to Q3*	V1 (1036Pa)	V3 (2183 Pa)
ZEPHIR® Evolution	310 x 1195 x 14	300 x 1200	11,5	32	Up to Q3*	V1 (1036Pa)	V3 (2183 Pa)
Reinforced ZEPHIR® Evolution	310 x 595 x 38	300 x 600	11,5	65	Q4	V1 (1036Pa)	V3 (2183 Pa)
Reinforced ZEPHIR® Evolution	310 x 1195 x 38	300 x 1200	23,30	65	Q4	V1 (1036Pa)	V3 (2183 Pa)

H = Height; L = Length; Th. = Thickness
* Maximum resistance achieved with a custom layout: main frame on-centre of 300mm and middle horizontal rail.
For other lengths, please contact us.

THE PERFECT CHOICE

FOR LOW-ENERGY AND/OR PASSIVE PROJECTS



*"The façade material and insulation systems selected allowed us to comply with regulations, to meet deadlines and keep construction costs in line. The results achieved and the tests carried out are showing that the recorded performances go beyond projections **making this building a passive building.**"*

Terracotta wall-cladding was the obvious choice to naturally complement wood. The sunscreen accessories offered and the ability for the wall-cladding to follow curved lines were additional assets."

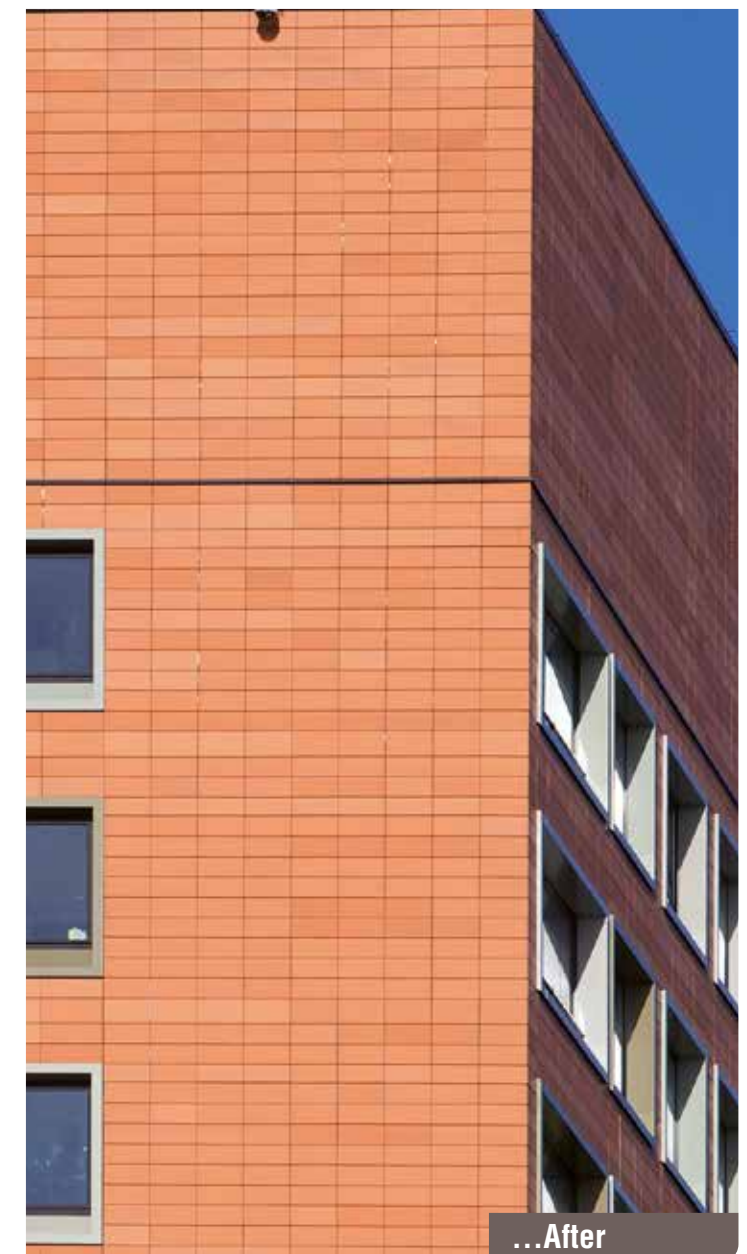
states SCPA Lacaille Lassus the architect of the project.

A WALL-CLADDING SYSTEM

PERFECTLY SUITED FOR RENOVATION



Tenants' post-renovation heating bills went down by 25%.



COLOURS

THROUGH-COLOURED TERRACOTTA SHADES



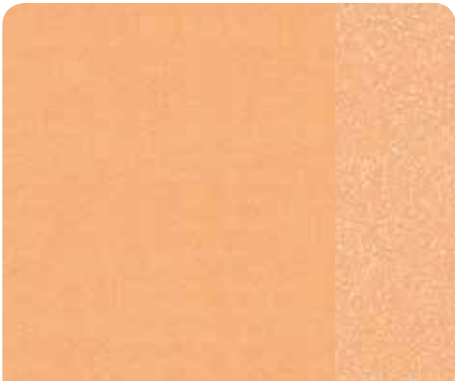
COLOUR HAS BECOME AN ESSENTIAL INGREDIENT IN ARCHITECTURAL DESIGN WHICH INSPIRES EMOTIONAL RESPONSE TO ANY PROJECT IT IS APPLIED TO.

We have created a collection of various colours and finishes including through coloured or glazed tiles, reflecting our passion for terracotta and serving to fulfil the requirements and objectives of the architect and the client.

Terracotta **traditional** colours come alive with the natural shades of clay.



Champagne Sanded finish



Dune Pink Sanded finish



Red Orange Sanded finish



Red Sanded finish



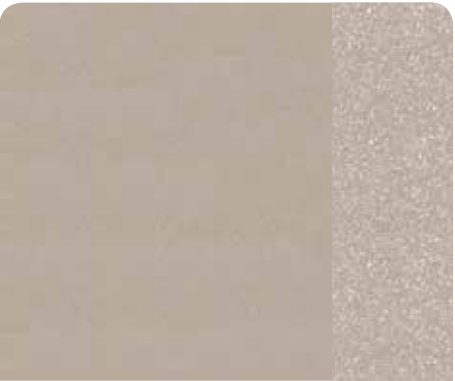
Violine Sanded finish

NEW

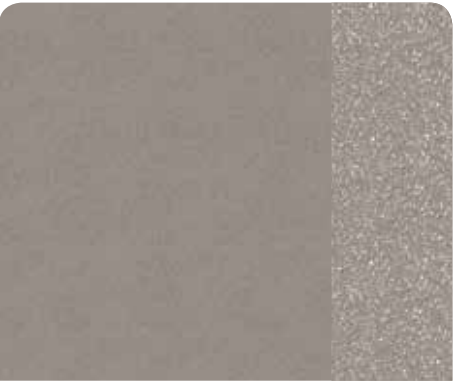
Contemporary mineral shades for neutral colour tones.



Stone Colour Sanded finish



Clay Grey Sanded finish



Storm Grey Sanded finish



Sahara Beige Sanded finish



Pearl Grey Sanded finish



Ebony Sanded finish

Warm contemporary colours, a mix of clay and natural oxides.



Dark Grey Sanded finish



Chocolate Brown Sanded finish



Ebony Sanded finish

FINISHES



Perforated finish

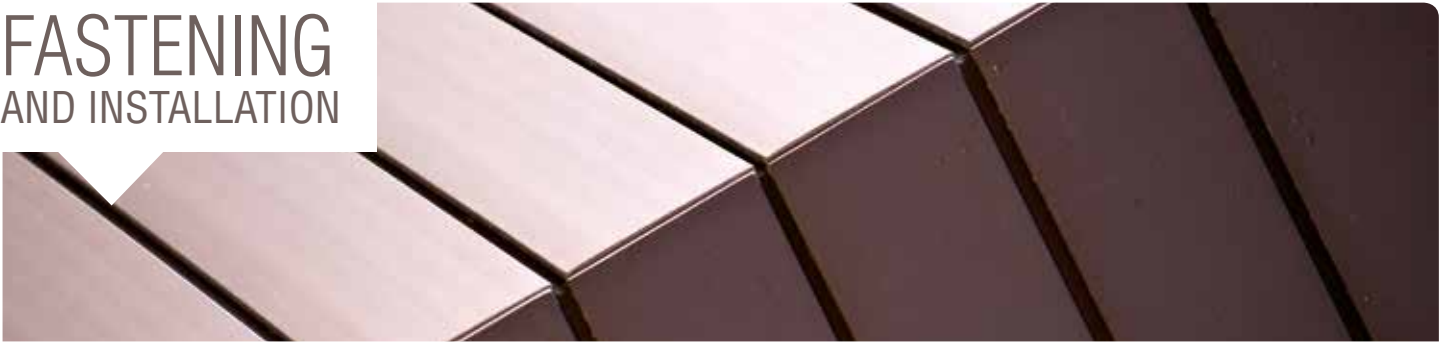


Grooved finish



Glazed finish

FASTENING AND INSTALLATION

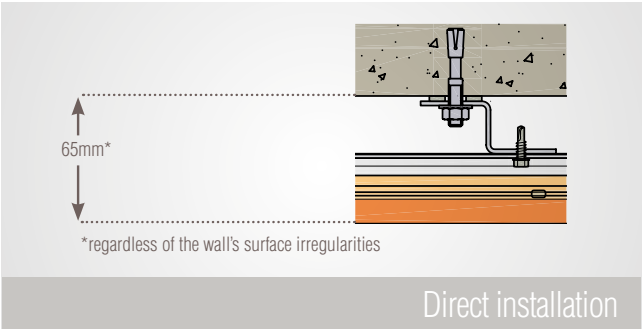
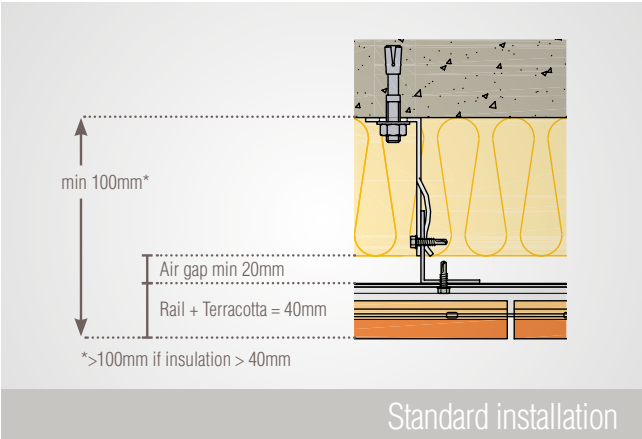
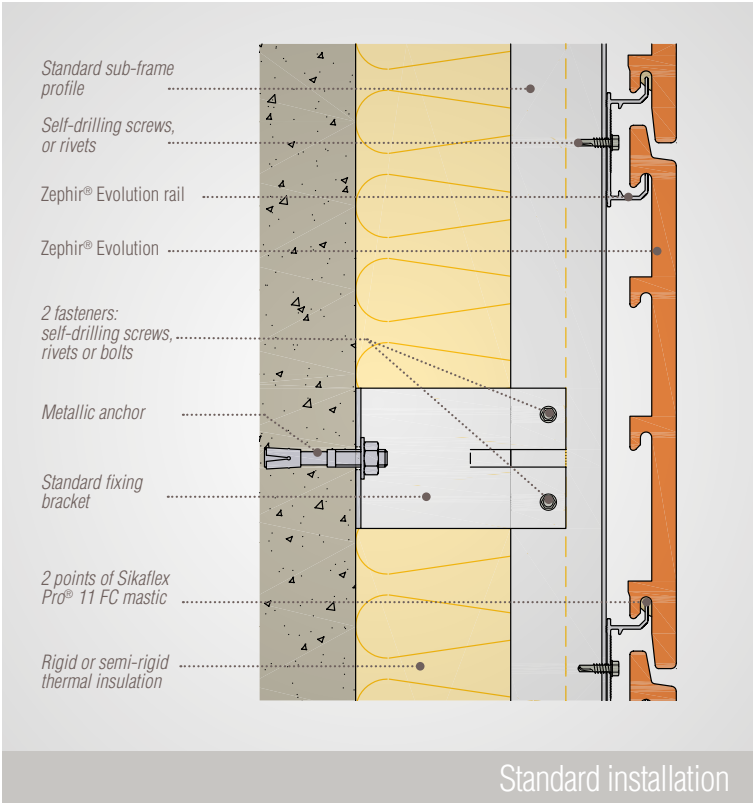


Wall-cladding system consisting of single-skin terracotta panels, with support bars on the back side used for installation on horizontal rails. The horizontal rails are fastened on a vertical framework fixed to the bearing wall. It is possible to install thermal insulation behind the framework.

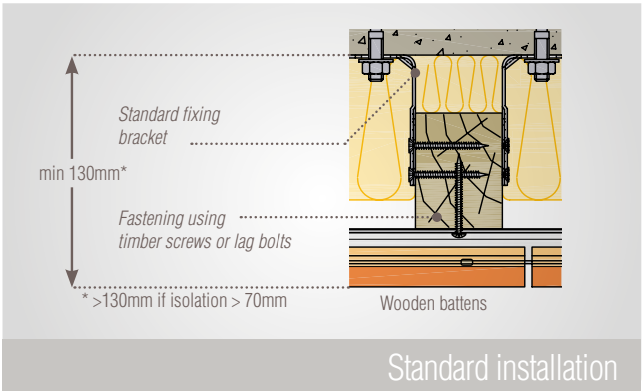
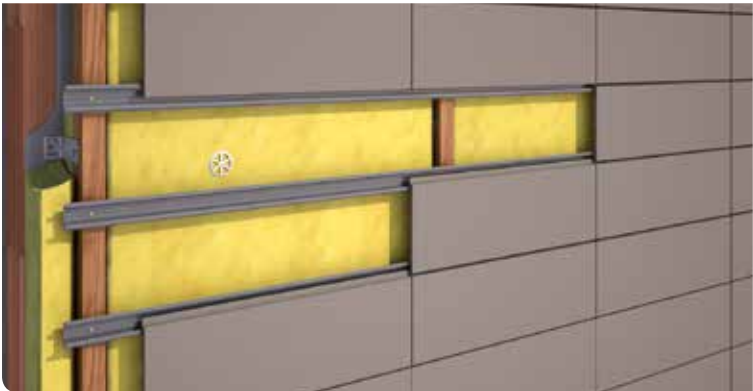
Installing the vertical framework - made of timber studs or metal profiles - on solid concrete walls or coated masonry must comply with the rules found in CSTB's Workbooks No.3316/3422/3585 (for timber frames) or No.3194/3586 (for metal frames), including the provision for a ventilated air gap (min 20mm).

Accessories not sold by TERREAL(written in italic in figures) : Sikaflex® pro 11-FC mastic, thermal insulation, fixing brackets and anchors, vertical timber studs or metal profiles for the sub-frame, metal or PVC profiles used for flashings and various finishes and screws.

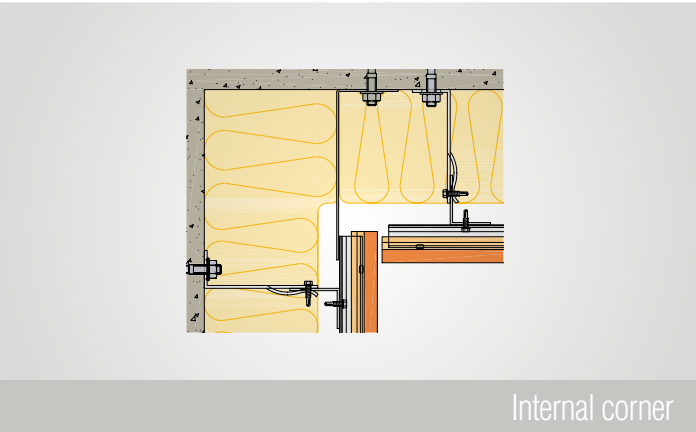
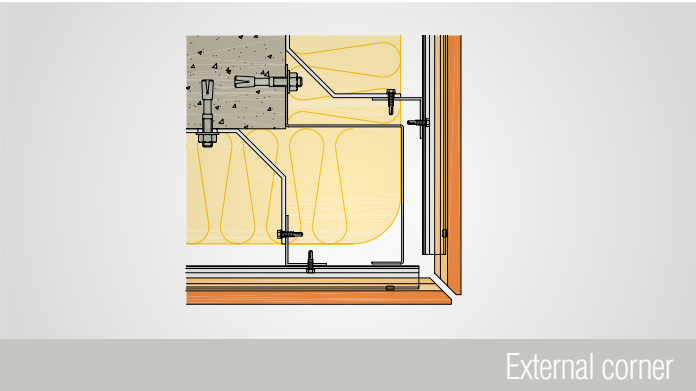
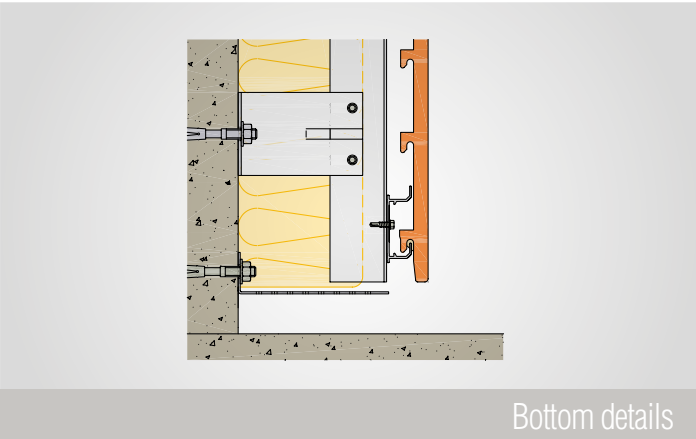
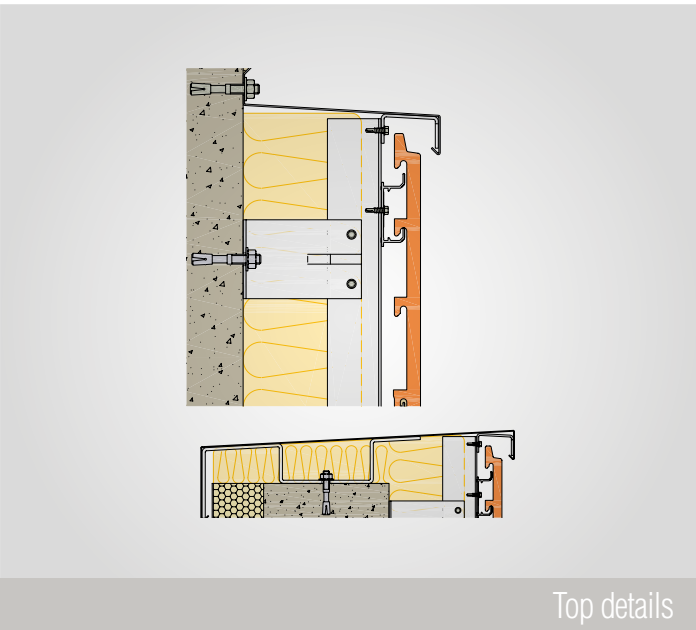
INSTALLATION ON METAL FRAMEWORK



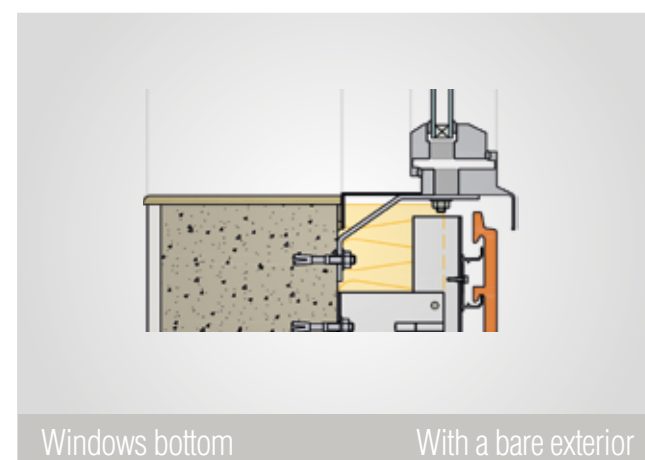
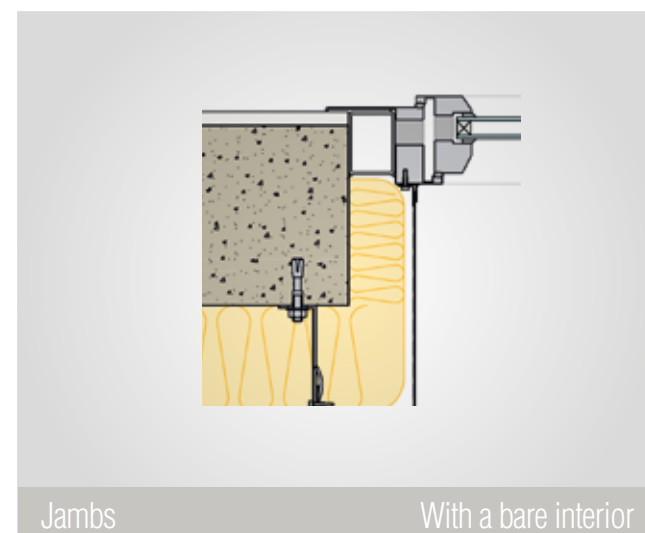
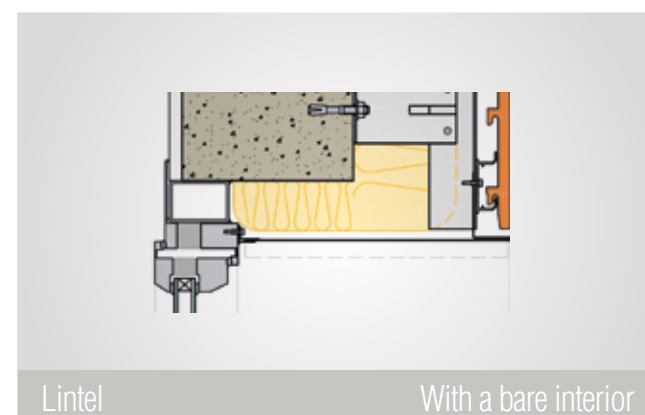
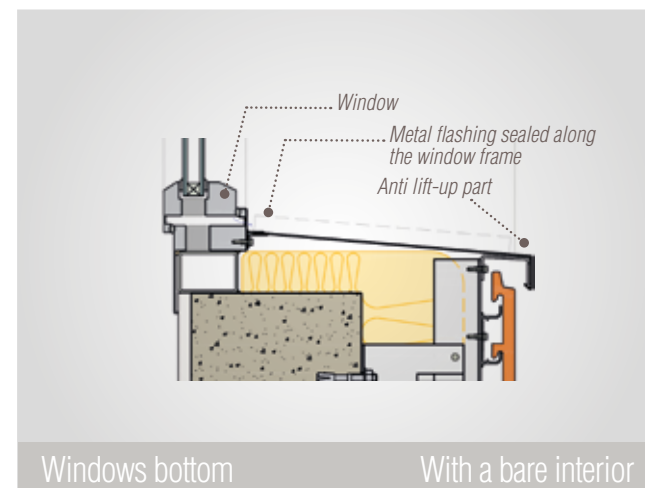
INSTALLATION ON WOODEN STRUCTURE



TERMINATIONS TREATMENT



TREATMENT OF OPENINGS



STANDARD PANEL FITTING GUIDE





Discover the whole of the Façade range on our web site.

WWW.TERREALFACADE.COM

Façade Departement Terreal : Antipolis Bât. B - 37, Avenue Normandie Niemen
BP 13 - 31701 Blagnac cedex France

Tel. : +33 (0)5 34 36 21 00 - Fax : +33 (0)5 34 36 21 01

Email: facade@terreal.com