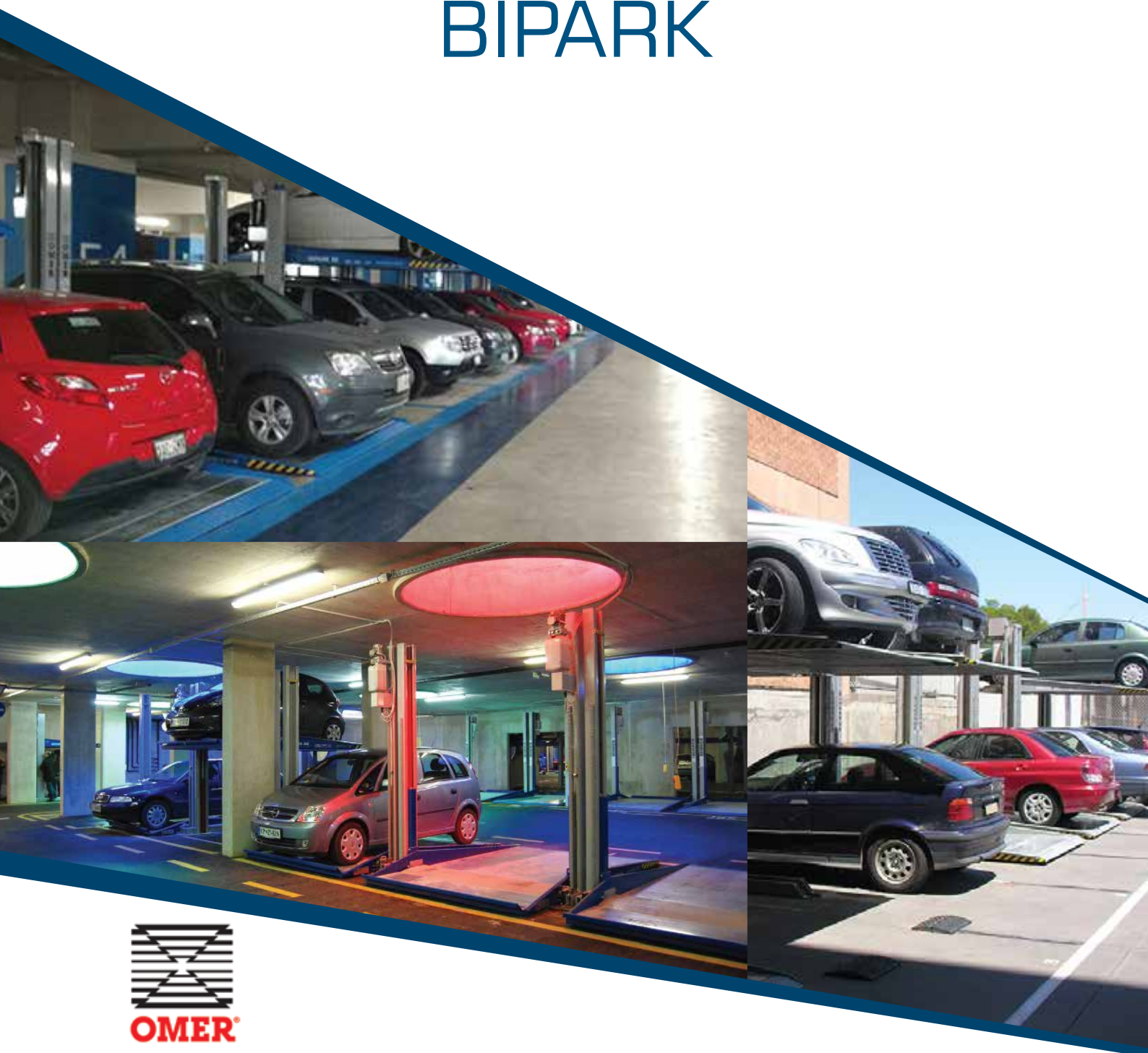


*Levant*PARK

TECHNICAL SPECIFICATION BIPARK



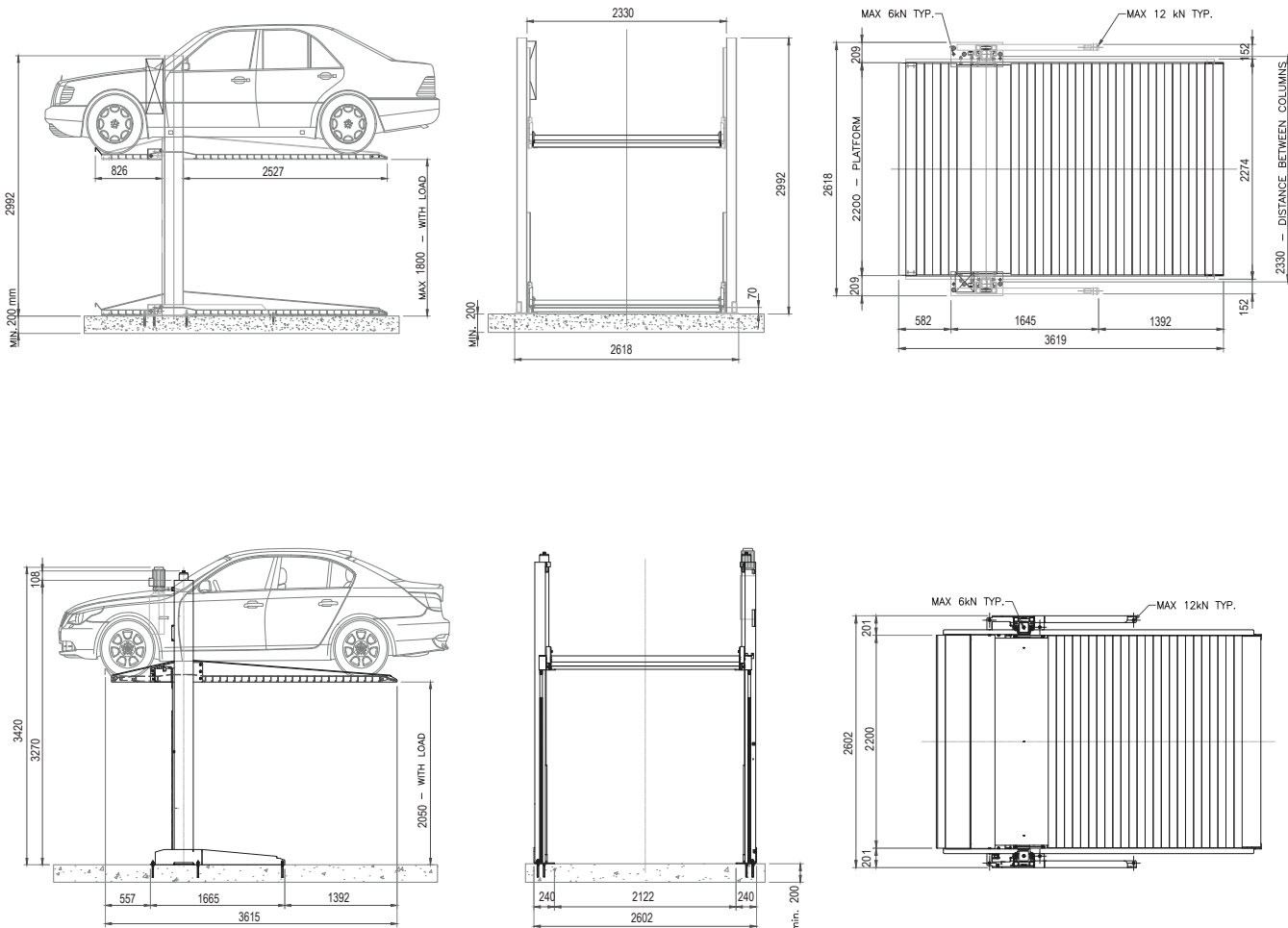
SMART SOLUTIONS FOR VEHICLE PARKING AND CAR STORAGE

Bipark is a compact double car stacker that is engineered to lift vehicles smoothly and quickly into position.

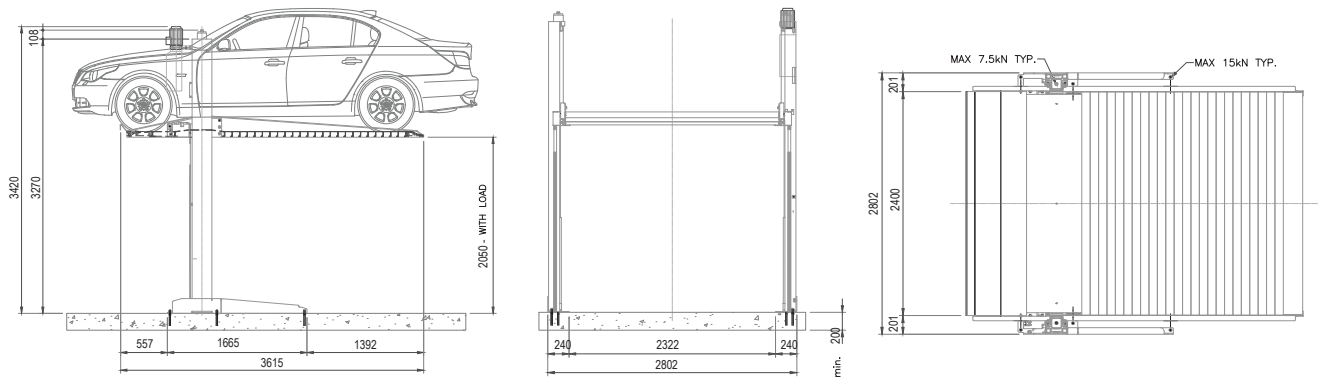
The platform has a lift capacity up to 3,200 kg and will accommodate the new generation SUV's, 4 wheel drive vehicles and low clearance sports cars.

Other aspects of the units like galvanised platform structure, front wheel stop bar, location of the unit's electro hydraulic system, unique torsion bar and locking mechanism, the toothed pinion all allow the unit to be operated smoothly, efficiently and safely in today's environment.

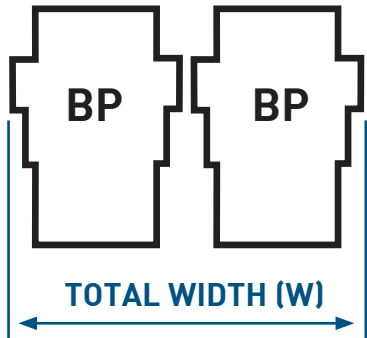
| | Capacity | Standard Lifting Height | Max Lifting Height | Standard Platform | Net height | Pit | Power | Speed | Power supply | Standard Weight | Notes |
|------------------|-----------|-------------------------|--------------------|-------------------|------------|-----|--------|----------|---------------|-----------------|-------|
| BIPARK LP-BP2618 | 2.600 kg. | 1.850 mm | 1.850 mm | 2.200x3.619 mm | 1.800 mm | NA | 1,5 kw | 0,04 m/s | 445 v / 50 hz | 1.050 kg. | |
| BIPARK LP-BP2621 | 2.600 kg. | 2.100 mm | 2.100 mm | 2200x3619 mm | 2.050 mm | NA | 1,5 kw | 0,03 m/s | 415 v / 50 hz | 1.100 kg. | |
| BIPARK LP-BP3221 | 3.200 kg. | 2.100 mm | 2.100 mm | 2.400x3.619 mm | 2.050 mm | NA | 1,5 kw | 0,03 m/s | 415 v / 50 hz | 1.270 kg. | |



BIPARK LP-BP3221



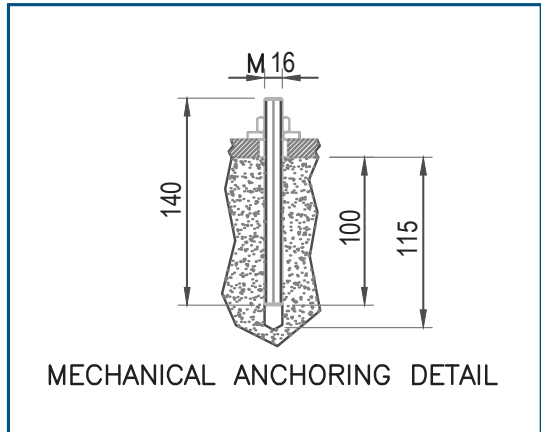
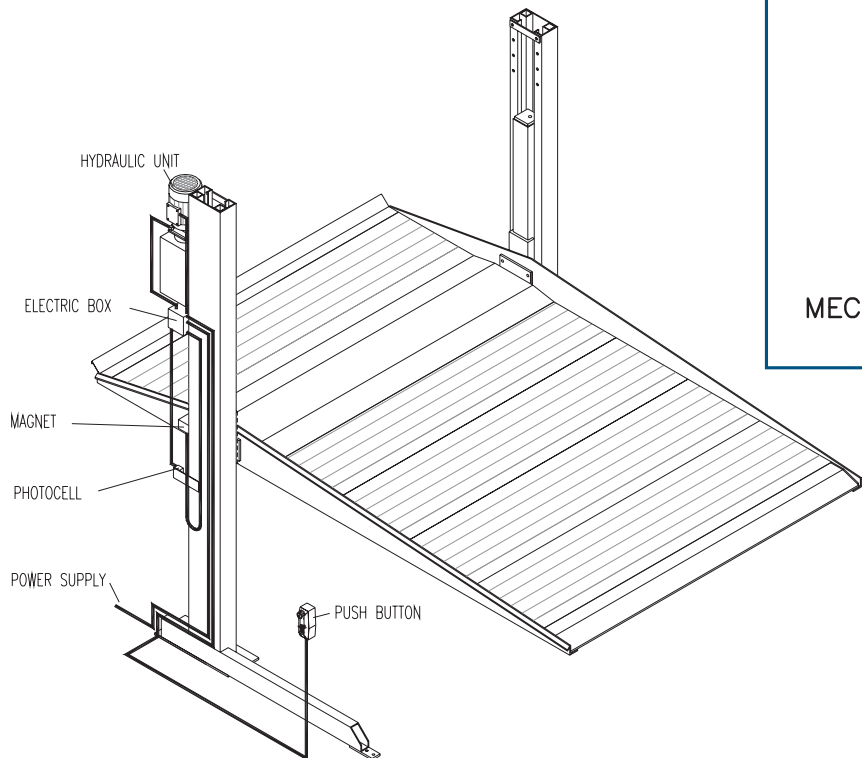
MULTIPLE CAR STACKERS – WIDTH REQUIREMENTS



| No. of Bays | Minimum Width required in mm (W) | Total Cars Parked (S) |
|-------------|----------------------------------|-----------------------|
| 2 | 5250 | 4 |
| 3 | 7860 | 6 |
| 4 | 10480 | 8 |
| 5 | 13100 | 10 |
| 6 | 15720 | 12 |
| 7 | 18340 | 14 |
| 8 | 20960 | 16 |

*Dimensions based on LP-BP2618

CABLE CONNECTION LAYOUT



MECHANICAL ANCHORING DETAIL

ACCESSORIES

■ STANDARD □ OPTIONAL

| DESCRIPTION | BIPARK 26 | BIPARK 26 H21 | BIPARK 32 | NOTES |
|---|-----------|---------------|-----------|--|
| Standard colours: BLUE RAL 5005 and SILVER RAL 9006 | ■ | ■ | ■ | |
| 2 columns complete with lifting cylinders | ■ | ■ | ■ | |
| 1 standard platform | ■ | ■ | ■ | W 2200 mm x L 3619 mm. |
| 1 torsion bar | ■ | ■ | ■ | |
| 1 front wheel stop bar | ■ | ■ | ■ | |
| 1 "dead man" push-button board | ■ | ■ | ■ | |
| 1 hydraulic control unit with motor 1,5KW | ■ | ■ | ■ | |
| Power Supply: 415V/3Ph/50Hz | ■ | ■ | ■ | |
| Adjustable stopping height | ■ | ■ | ■ | |
| Mechanical and electrical safety devices | ■ | ■ | ■ | |
| Nylon Package | ■ | ■ | ■ | |
| Push-button board support | □ | □ | □ | |
| Waterproof galvanised cover for control unit for outdoor installation | □ | □ | □ | |
| Waterproof push-button board IP 65 | □ | □ | □ | |
| Top Cover (nr. 2 pieces) | □ | □ | □ | |
| Flashing light | □ | □ | □ | |
| Audible warning kit | □ | □ | □ | |
| Emergency manual pump | □ | □ | □ | |
| Vehicle Presence Sensor under the Platform | □ | □ | □ | |
| Vehicle Presence Sensor above the Platform | □ | □ | □ | |
| Non standard power supply - 240V/1Ph/50Hz | □ | □ | □ | |
| Identical Keys for a set of Biparks | □ | □ | □ | |
| Different keys for a set of Biparks | □ | □ | □ | Max 10 different keys |
| Hot Galvanised metal finish | □ | □ | □ | Columns, guides, columns connection plate, platform profile, ramp and wheel stop |



Designed for Australian site conditions



Engineered & Manufactured in Europe

BIPARK SYSTEMS CONFORM TO:

- AS 3000
- AS Part 1601
- ISO 9001
- AS 60204
- AS1217.1
- EN14010

| | | | | |
|------------|---------------------------|------------------------|------------|-------------|
| QLD | - 17 Canberra Street | Hemmant | QLD | 4174 |
| NSW | - 89 Gascoigne Street | Kingswood | NSW | 2747 |
| WA | - 67 Tacoma Circuit | Canning Vale | WA | 6155 |
| VIC | - 135 Northcorp Boulevard | Broadmeadows | VIC | 3043 |
| SA | - 6 Sheffield Street | Woodville North | SA | 5012 |

