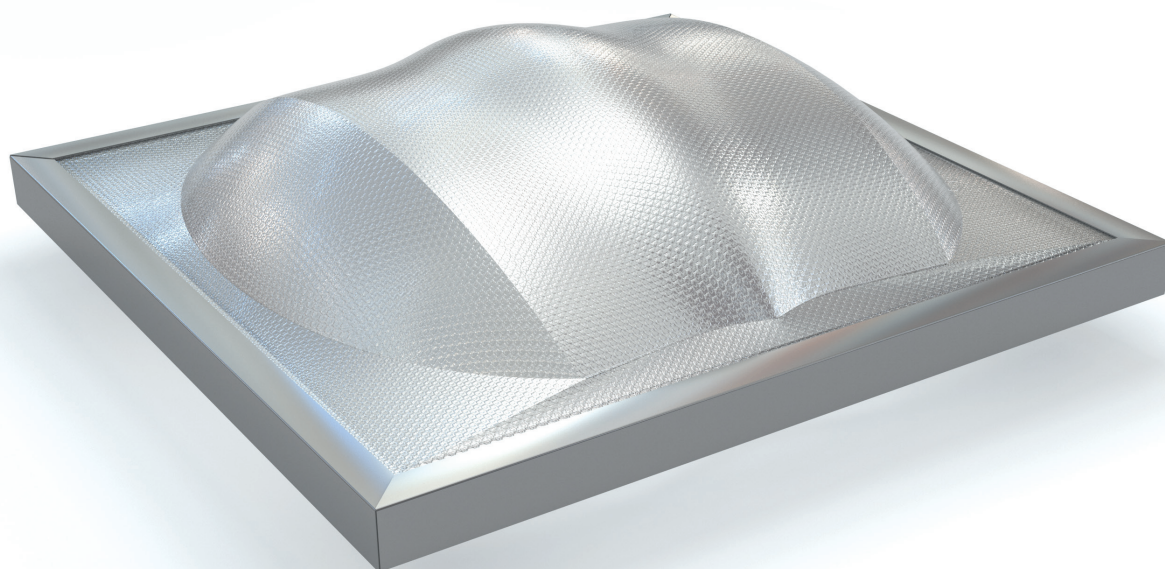




# Kingspan Day-Lite Kapture Data Sheet

KS700DLK, KS1400DLK, KS1500DLK and KS2750DLK



# Application

KS700DLK, KS1400DLK, KS1500DLK & KS2750DLK rooflights are suitable for use with all Kingspan insulated roof panels as well as other roof systems. Please refer to sales for further information.

Frames include an integral condensation and drainage gutter which drain interior moisture to the outside

- 100% UV resistant
- 100% Diffusion

The rooflight is triple-glazed using specially designed polycarbonate layers to maximize both light transmission and diffusion.

The shape of the rooflight unit has been specially designed to capture the maximum level of light, even at low angles, so is ideal for use in geographical areas such as Northern Europe.

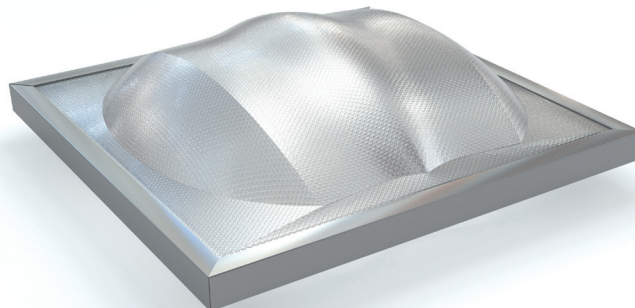
The rooflight units are pre-glazed ready for installation in to the prefabricated kerbs. The U-value of the polycarbonate glazing is 2.2 W/m<sup>2</sup>K.

The rooflight frames are fabricated from aluminium and have a natural mill finish. The corners of the frame and cap are mitred and welded.

The safety security fabricated wire mesh has been tested to withstand the impact of a 50kg weight (400mm in diameter) dropped from a height of 2400mm (BS EN 1873:2014 Class SB1200\*) and is Class B non-fragile to ACR[M]001.

Through the utilization of nano-prismatic technology, Kapture Skylights offer exceptional levels of light transmission, coupled with 100% diffusion. Additionally, nano-prismatic technology eliminates glare and therefore hot spots, reducing heat gains in buildings. More light is directed to the work plane, providing the light levels required in any building for more hours than any other rooflight. With these features, Kapture Skylights will help comply with daylighting requirements, new European Daylighting Guidelines and BREEAM H01 Visual comfort requirements.

\* BS EN 1873:2014 Class SB900 for the security mesh for KS700DLK



## Dimensions and Weights

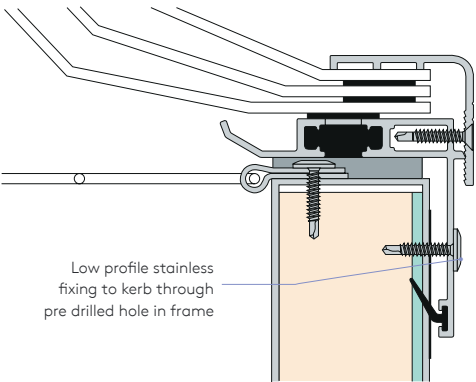
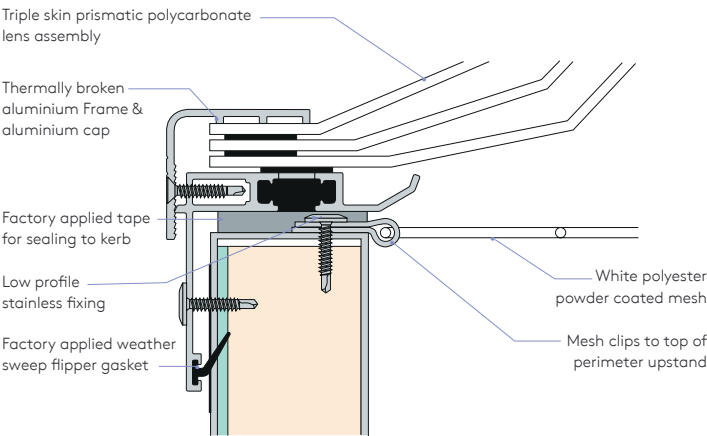
Product Reference	KERB O.D		External Dimensions		Daylight Opening Dimensions			Skylight Weight (kg)	Kerb Height (mm)	Kerb Weight (kg)	Mesh Weight (kg)
	Length (mm)	Width (mm)	Length (mm)	Width (mm)	Length (mm)	Width (mm)	Area (m <sup>2</sup> )				
KS700DLK	780	780	810	810	692	692	0.4	12	150 309	19.2 27.8	0.9
KS1400DLK	780	1560	810	1590	692	1472	1.0	24	150 309	29.0 41.7	1.9
KS1500DLK	1630	1560	1660	1590	1542	1472	2.2	44	150 309	39.5 57.0	4.2
KS2750DLK	2845	1560	2875	1590	2758	1472	4.0	62	150 309	54.5 78.7	7.6

Product Reference	Diffusion	SHGC (g-value)	Light Transmittance (%)**
Standard	100%	0.70	83
Climate Control	100%	0.45	81

Note: \*\*Light transmission according to EN 410 is as measured on 600mm x 600mm samples

# Technical Specifications

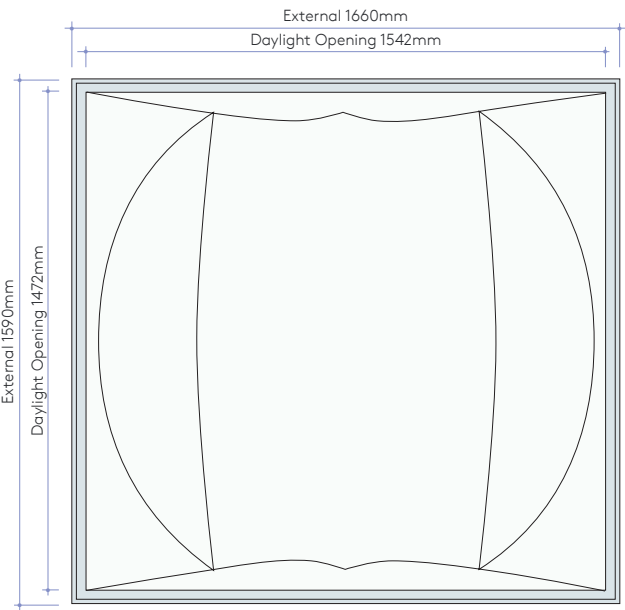
## Kingspan Day-Lite Kapture



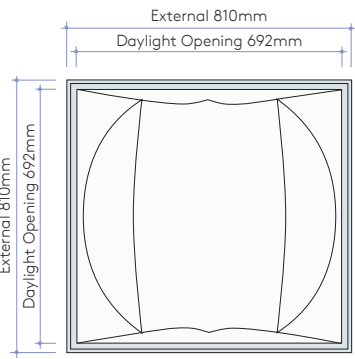
## Kingspan Day-Lite Kapture

Internal and external measurements.

### KS1500DLK



### KS700DLK

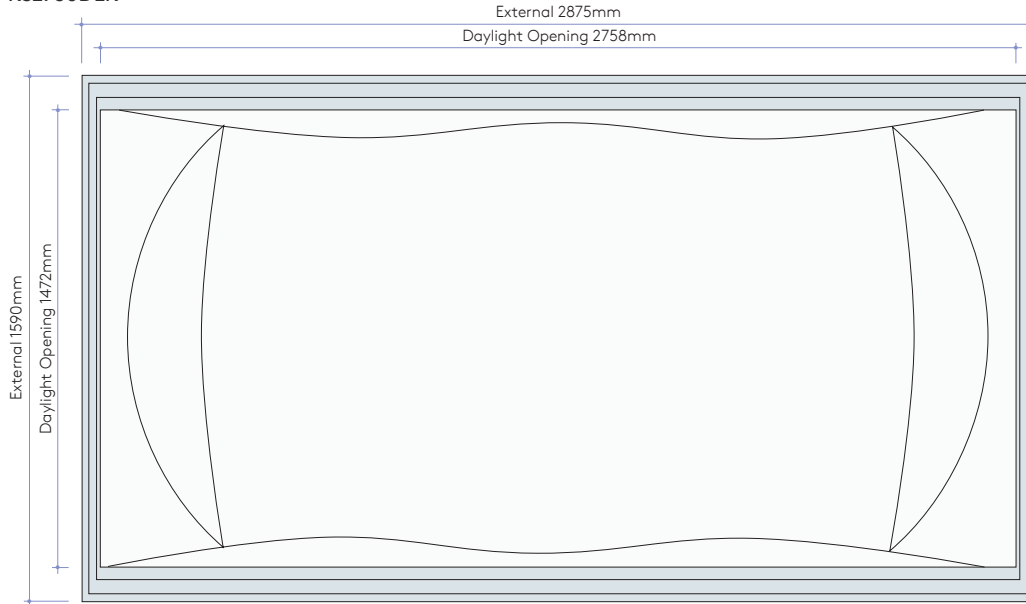


# Installation Instructions

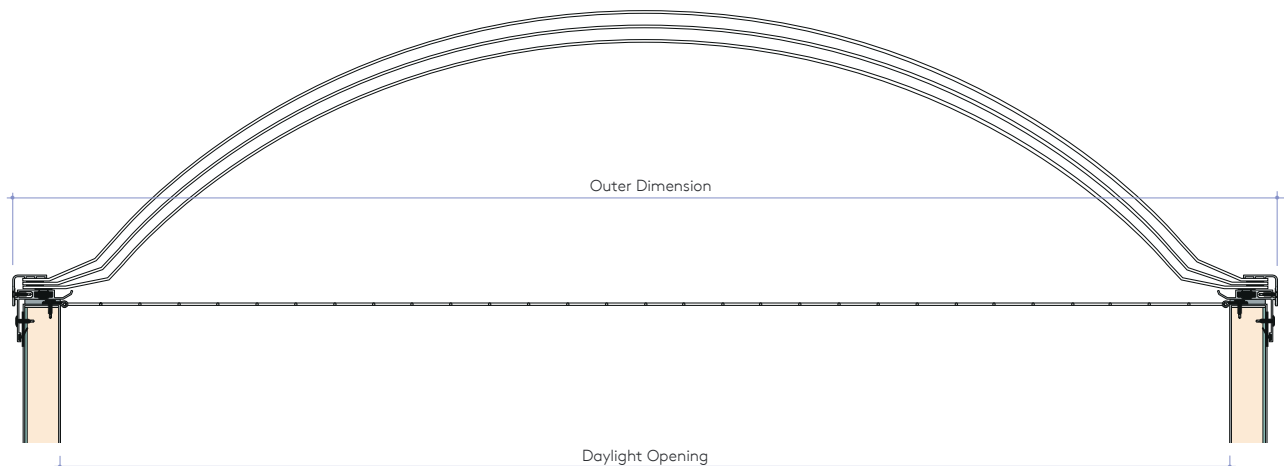
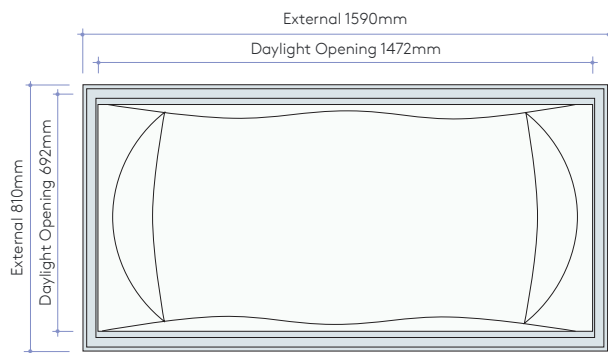
## Kingspan Day-Lite Kapture

Internal and external measurements.

### KS2750DLK



### KS1400DLK



---

## H&S Classification

- Non-Fragility to ACR [M]001: 2014 Class B, when installed as per Kingspan details
- Non-Fragility to BS EN 1873:2014 Class SB1200 when installed as per Kingspan details

The security mesh fixed to the kerb achieves

- Non-Fragility to ACR [M]001: 2014 Class B, when installed as per Kingspan details
- Non-Fragility to BS EN 1873:2014 Class SB1200 when installed as per Kingspan details\*\*

\*\*Non-fragility to BS EN 1873:2014 Class SB900 for KS700DLK security mesh

---

## Fire Performance

The Day-Lite Kapture polycarbonate achieves European class B-s1-d0 to EN13501, which can be regarded as an AA (National class) designation or BROOF(t4) (European class) in accordance with UK building regs.

---

## Properties

- Building air leakage: Less than  $3\text{m}^3/\text{m}^2/\text{hr}$  at 50Pa for complete envelope\*.

---

## Materials

The Factory Assembled Skylight;

- Triple Layer Polycarbonate
- Aluminium Frame

The Site Assembled kerb and safety screen (optional, but recommended);

- White Powder coated security safety screen manufactured from welded steel mesh
- White Powder coated galvanized kerb

---

## Product Tolerances

Length	+/-5mm
Squareness	+/-5mm
Width	+/-5mm

---

## Fixing Details

Please refer to the standard details for fixing arrangements. For further information, please contact Kingspan Technical Service.

---

## Packing

Kingspan Day-Lite Kapture rooflights are stacked weather side up (to minimize pack height). The top, bottom, sides and ends are protected with foam and timber packing and the entire pack is wrapped in plastic.

---

## Quality & Durability

The Kingspan Day-Lite range is manufactured from the highest quality materials, using state-of-the-art production equipment to rigorous quality control standards; ensuring long term reliability and service life. All Kingspan Day-Lite products are fully compliant with ISO 9001, ISO 14001 and OHSAS/ISO 18001.

---

## Guarantee

Kingspan Guarantee covering the structural and thermal performance for a period of up to 25 years.

---

## Safe Storage

To ensure the Kingspan Day-Lite Kapture system remain in prime condition while stored on site, the following precautions should be taken.

At ground level:

- Allocate a safe, trade-free area;  
Prevent personnel from walking over packs; and store all components of the Kingspan Day-Lite Kapture system in packaging and on a slight slope ensuring any penetrating rainwater drains off.

At roof level:

- Prior to and during installation, securely tie Kingspan Day-Lite Kapture packs to the roof structure to prevent movement; and keep Kingspan Day-Lite Kapture skylights covered to prevent penetration from rainwater.
- Kingspan Day-Lite Kapture skylights must be kept out of direct sunlight at all times prior to installation (at both ground and roof level). It is recommended to cover Kingspan Day-Lite Kapture packs with a non-transparent waterproof sheet.

---

## Sea Freight

Fully timber-crated packs are available on projects requiring delivery by sea freight shipping, at additional cost. Alternatively, steel containers can be used. Special loading charges apply.

---

## Delivery

All deliveries (unless indicated otherwise) are by road transport to project site. Off-loading is the responsibility of the client.

---

## UK

### **Kingspan Light + Air**

Greenfield Business Park No.2

Holywell, Flintshire, CH8 7GJ

T: +44 (0) 1352 716100

F: +44 (0) 1352 710161

E: [info@kingspanlightandair.com](mailto:info@kingspanlightandair.com)

[www.kingspanlightandair.co.uk](http://www.kingspanlightandair.co.uk)

---

## Ireland

### **Kingspan Light + Air**

Carrickmacross Road,

Kingscourt, Co. Cavan

T: +353 (0) 420969 8500

F: +353 (0) 420969 8572

E: [info@kingspanlightandair.com](mailto:info@kingspanlightandair.com)

[www.kingspanlightandair.ie](http://www.kingspanlightandair.ie)

For the product offering in other markets  
please contact your local sales representative  
or visit [www.kingspanlightandair.com](http://www.kingspanlightandair.com)

Care has been taken to ensure that the contents of this publication are accurate, but Kingspan Limited and its subsidiary companies do not accept responsibility for errors or for information that is found to be misleading. Suggestions for, or description of, the end use or application of products or methods of working are for information only and Kingspan Limited and its subsidiaries accept no liability in respect thereof.

Kingspan\_Day-Lite\_Kapture\_Datasheet\_UK\_EN

