



urbaneedge_cladding

structura

ultra**design** composites™

a specialist division of  **Le Messurier**



The Future of Cladding

Change is inevitable as worldwide demand for product innovation, whilst optimising resources, continues at a relentless pace. Ultra design composites are supported by 160 years of experience in timber and building products, providing valuable experience and expertise to evaluate industry and environmental changes, and recognise significant turning points. This era of composites is one such turning point for the timber and building industry as well as the consumer.

New technologies have continued to improve across all frontiers, enabling composite products to be designed to not only match the manufacturing requirements but to also better suit the end use. The future thinking in composites has immediate cost and environmental benefits now and will be truly significant for future generations.

urbanedge_cladding structura™ is a contemporary composite of sustainably resourced wood fibres and recycled plastics (polymer). Engineered and manufactured in Germany to a modern design profile, it is environmentally friendly with an outstanding life cycle and warranty.

Delivering outstanding protection from the weather and providing sustained improvement in a buildings energy balance, urbanedge_cladding structura's outstanding performance is matched with a 5 year warranty.

Offering exceptional benefits over traditional materials, urbanedge_cladding structura will not rot, crack, splinter or rust, and will require no sanding, or painting. Termite resistant and exceptionally durable, urbanedge_cladding structura is a true low maintenance product.

Fabricated in two design profiles, urbanedge_cladding structura delivers a modern style to entire facades or isolated accents alike. The facade profiles, which can be installed either horizontally or vertically, come in four striking colours with metallic effect and with two different surface textures gives architects and builders maximum design freedom.

An uncomplicated material to work with, the urbanedge_cladding structura profile has a cover width of 232mm, can be easily handled by one person and worked with traditional tools allowing for fast, low-cost installation. urbanedge_cladding structura can also be combined with other materials very well.

The unique attributes of urbanedge_cladding structura has seen this product used nationally in all sectors, from iconic commercial projects to a variety of residential constructions.

No Rotting

No Cracking

No Rust

No Sanding

No Painting

No Splintering

Hidden Fixings

PEFC-Certified

Termite Resistant

Wood Polymer Composite

German Engineered & Manufactured

Easy to Care For & Low-Maintenance

CHOICE of 4 COLOURS

5 YEAR WARRANTY

Colours





Specification Overview

Width

profile width 240 mm
coverage width 232 mm

Length

3.10 metres

Weight

8 kg/m²

Composite

60% PEFC certified sustainable wood fibre
40% recycled high density polyethylene

Cut & Shaped

use of current carpentry tools

Finish

fine line
broad line

Colours

black zinc, silver alu, red copper, green copper

Warranty

5 years

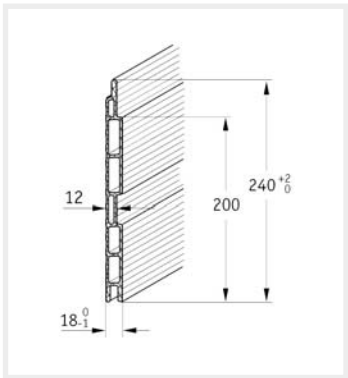
Storage & Handling

- » packs of urbanedge_cladding structura should be stored in a dry flat area, under cover and off the ground
- » please note urbanedge_cladding structura is a finished product so please take care when handling

Dimensions

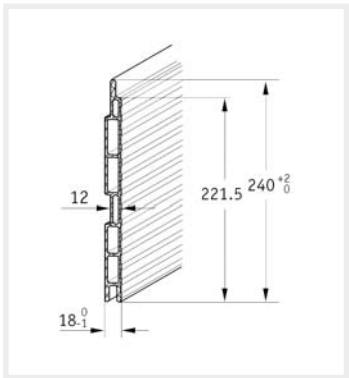
urbanedge_cladding
structura

broad line profile



urbanedge_cladding
structura

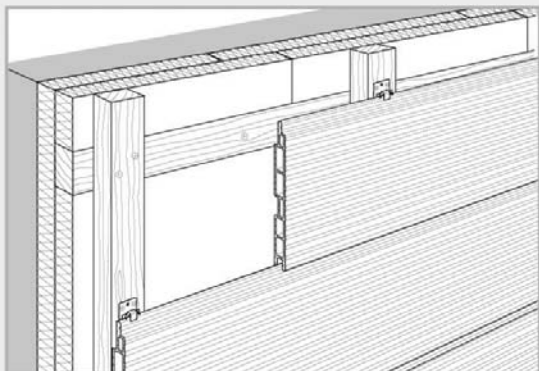
fine line profile



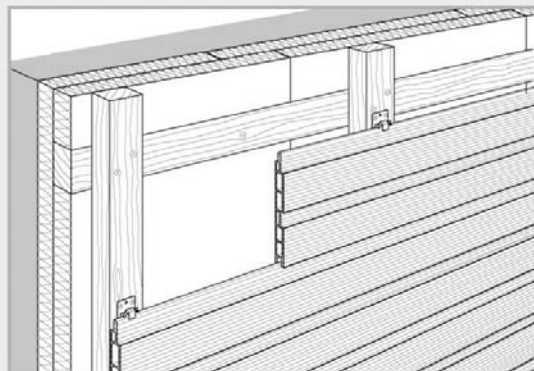
Technical Data

Swelling after storage in water at 100°C after 5h	thickness < 4% width <0.7% length < 0.3%
Length change due to moisture / heat exposure	< 5 mm/lm
Temperature resistance with regular use	-50 to +70 °C
Short-term temperature resistance	up to +120 °C

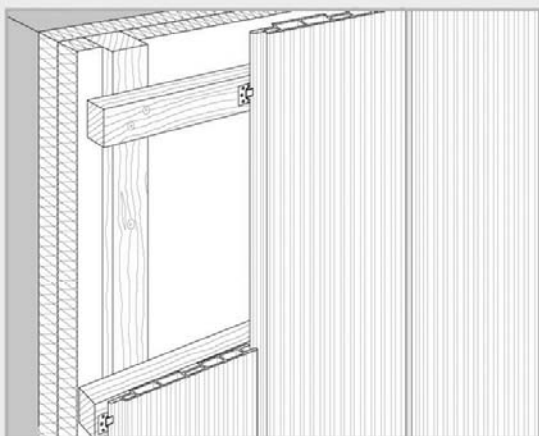
Fixing



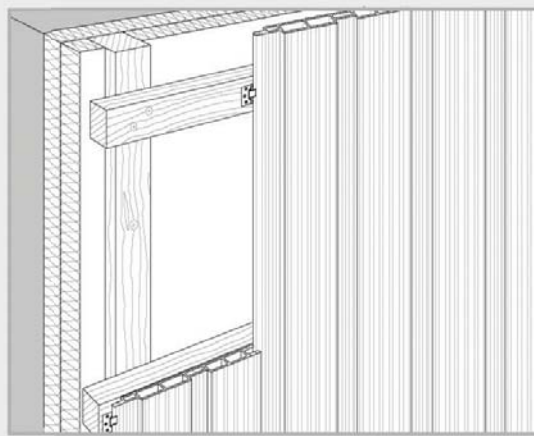
Horizontal installation of urbanedge_cladding structura, fine line profile.



Horizontal installation of urbanedge_cladding structura, broad line profile.

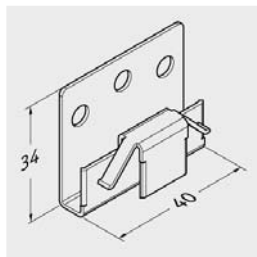


Vertical installation of urbanedge_cladding structura, fine line profile.



Vertical installation of urbanedge_cladding structura, broad line profile.

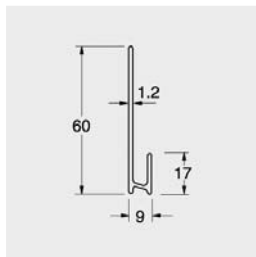
Fixing Accessories



Installation Clip

For fastening to wood sub-frameworks with countersunk screws 3.5mm x 30mm.

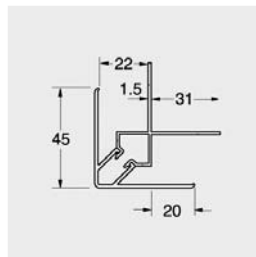
Material stainless steel
Coverage 8 clips per m²



Horizontal Starter Profile

For starting installation of horizontal orientated cladding.

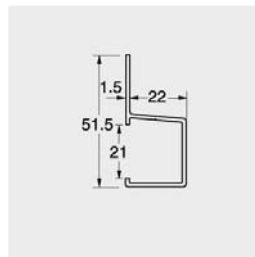
Material stainless steel
Length 5.5m



Corner Profile

For concealment of external corners - 2 piece corner profile.

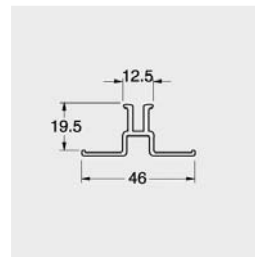
Material stainless steel
Length 5.5m



Connection Profile

For window reveals, roof edges, etc., when profiles are installed either lengthwise or crosswise.

Material stainless steel
Length 5.5m



Cover Profile

For continuous longitudinal joints on horizontally installed profiles.

Material stainless steel
Length 5.5m



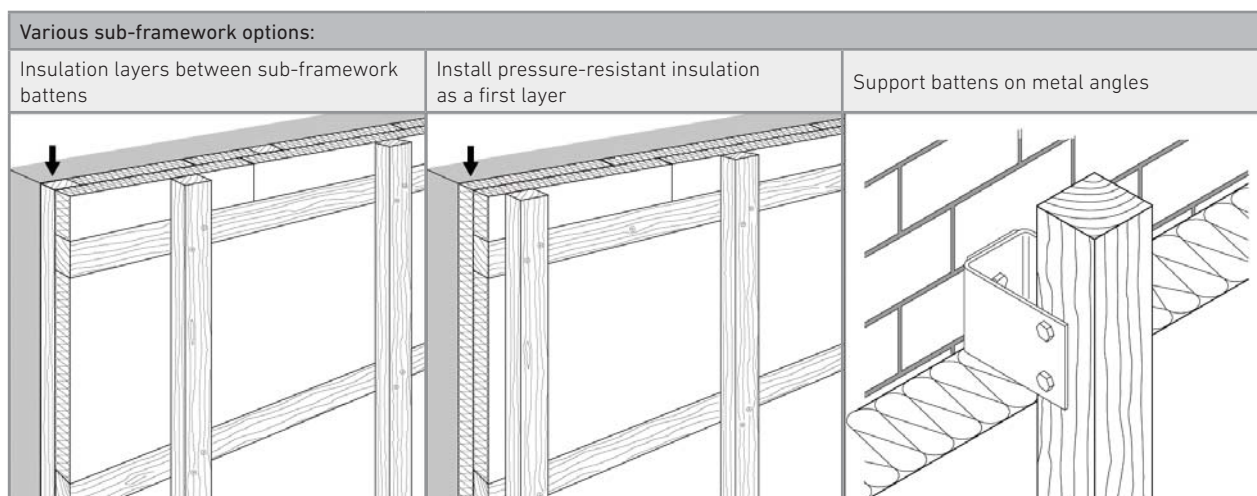
Important

The information in these installation instructions is based on the most common standard laying situations. Since all possible connection details cannot be addressed within the scope of these installation instructions, the fundamental principles and requirements for installation should be considered when implementing connection types not depicted here and the procedures should be adapted to the respective local conditions.

These installation instructions may be changed at any time without prior notice as a result of technical advancements. The most recent version is always available on the Internet at www.ultradesigncomposites.com.au. Please follow the instructions since no warranty can be provided in the event of deviation from these installation instructions.

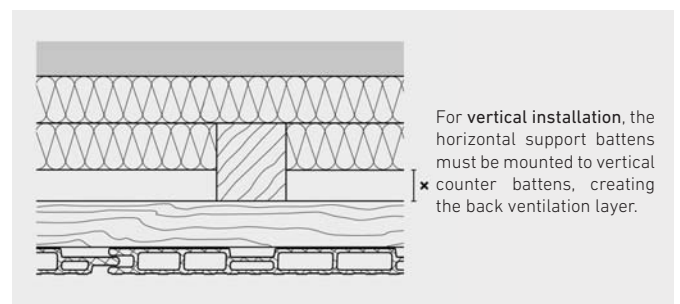
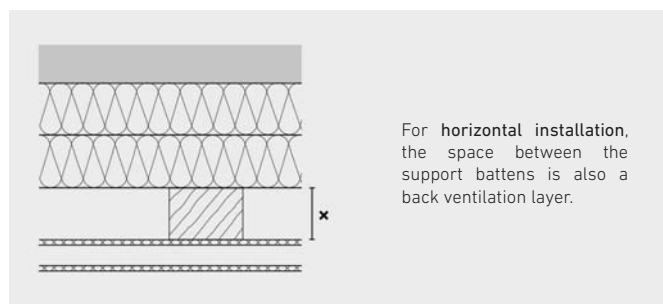
Sub-Framework

urbanedge_cladding structura profiles are typically fastened to a wood sub-framework. This generally consists of the support battens (to which the profiles are screwed) and the base and counter battens, which serve as a support structure for the support battens.

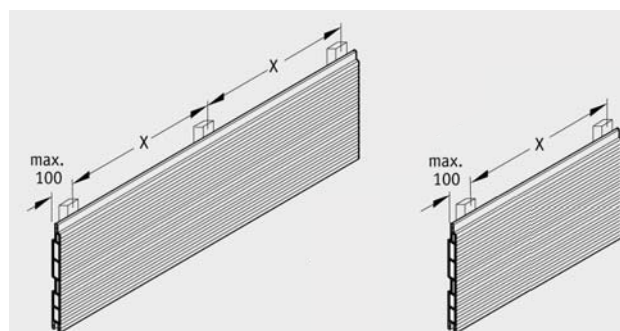


Back Ventilation

The back ventilation spacing "x" must be at least 20 mm. The back ventilation cross-section may not be regularly diminished by battens or other objects. The ventilation inlets and outlets must have consistent widths of at least 20 mm. Protection against small animals must be provided using ventilation profiles at the ventilation inlets and outlets, particularly when soft materials are used (i.e. insulation).



Maximum Fastening Spacing



x = 3 or more supports max. 625 mm

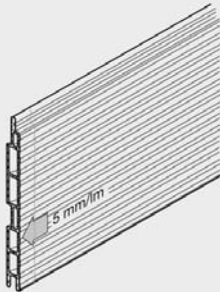
x = for only 2 supports max. 300 mm

The sub-framework spacing may have to be reduced near the edges

Profile excess length max. 100 mm

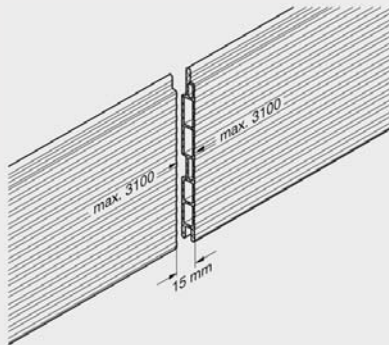
Expansion

Like every material exposed to the influence of the weather, dimensional changes in width, length and thickness are possible with urbanedge_cladding structura.



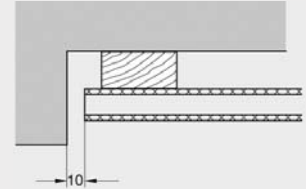
Longitudinal expansion

The longitudinal expansion of the facade profiles is max. 5 mm/linear m, depending on humidity and temperature.



Butt joints

The longitudinal expansion of the material must be taken into account during the planning and installation. For 3100 mm long profiles = 15 mm butt joints.



Joints to connections

Joints of 10 mm must be created against fixed borders, system accessories (outside corner C, connection profile F), etc.

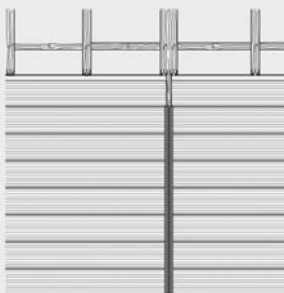
Joint Characteristics

Covering joints:

For joints that are covered by connection profiles (e.g. with outside corner C, cover profile, connection profile F), the cavities are not visible. In such cases, the connection profiles additionally accentuate the facade surface.

Open joints:

Open joints avoid making the profiles appear bulkier and go well with the modern appearance of urbanedge_cladding structura, like clay brick or metal facades. As in a clay brick facade, the cavities are hardly noticeable. However, the joint line must be created much more cleanly for open joints. In addition, varying length changes can subsequently result in a slightly uneven joint appearance.



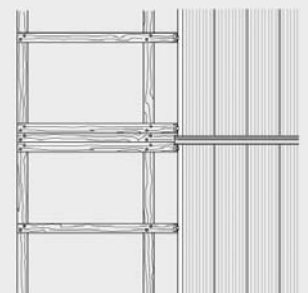
Consistent joint with cover profile



Open, offset joints
Alternative: Random pattern



Consistent, open joint



On vertical butt joints of structura: Z profile 2

Maintenance and Cleaning

Very little maintenance is needed to keep the urbanedge_cladding structura in optimum condition. However, if instances of soiling appear they should be cleaned off shortly after they occur. To do this, brush off the urbanedge_cladding structura profiles lengthwise with water and typical household detergents using a normal household cleaning tool. For stubborn dirt, a high pressure cleaner may be used (max. 80 bar, at least 20 cm distance from profile surface, no rotary nozzle).

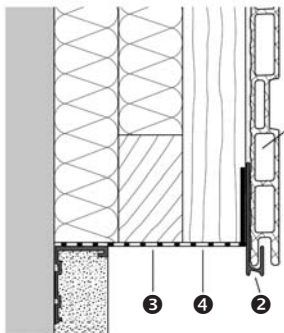
Greasy messes can be removed well with either stain removal spray, power grease remover, or multi-purpose cleaner. Afterward, rinse off the profiles well with a large quantity of water.



The horizontal installation is identical for both profile sides.
The maximum fastening spacing for the profiles is 625 mm.

1. Start of Installation

The urbanedge_cladding structura facade profile is not affected by splashing water. However, increased soiling should be expected in the area of splashing water.

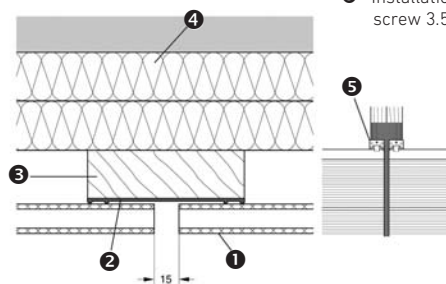


Recommendation: The wood sub-framework is better protected against splashing water with a max. 20 mm projection of the starting profile P.

- ① urbanedge_cladding structura facade profile
- ② Starting profile P and recessed head screw 3.5 × 30
- ③ Ventilation profile, plastic
- ④ Ventilation opening, consistent

Alternative with open joints:

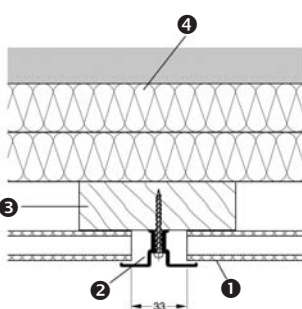
- Open cavity, such as on a clay brick facade.
- Open, butt joints in offset arrangement, random pattern or consistently aligned.



- ① urbanedge_cladding structura facade profile
- ② Jointing tape
- ③ Support batten, e.g. 100 mm × 30 mm
- ④ Thermal insulation
- ⑤ Installation clip and recessed head screw 3.5 × 30

2. Creating Butt Joints

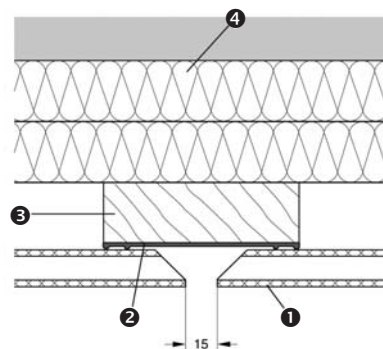
Joint-covering cover profile for consistent butt joints.



- ① urbanedge_cladding structura facade profile
- ② Cover profile and lock screw 4 × 40
- ③ Support batten, e.g. 100 mm × 30 mm
- ④ Thermal insulation
- ⑤ Installation clip and recessed head screw 3.5 × 30

Alternative to previous description:

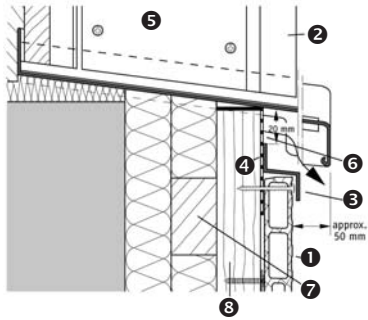
Cavities are more fully hidden by cutting the profile ends at an angle.



horizontal installation guide

3. Window Sill / Roof Edge Connections

Screw the cut profile near a profile web using lock screws 4 × 40 or universal screws H 6 × 45 (hole diameter 9 mm).

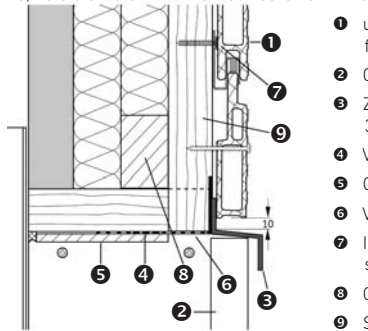


- 1 urbanedge_cladding structura facade profile
- 2 Connection profile F
- 3 Z profile 2 and recessed head screw 3.5 × 30; not necessary if the cut profile is sufficiently well covered
- 4 Ventilation profile, plastic
- 5 Cladding panel (alternative)
- 6 Ventilation opening, consistent
- 7 Counter batten
- 8 Support batten 50 mm × 30 mm

4. Window Lintel Connection

Whole profile: Start installation with starting profile P.

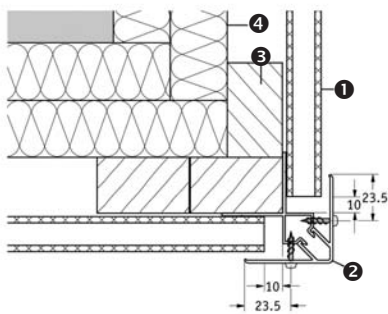
Profile cut to width: Screw visibly near a profile web using universal screws H6 × 45, hole diameter 9 mm or lock screws 4 × 40.



- 1 urbanedge_cladding structura facade profile
- 2 Connection profile F
- 3 Z profile 1 and recessed head screw 3.5 × 30
- 4 Ventilation profile, plastic
- 5 Cladding panel (alternative)
- 6 Ventilation opening, consistent
- 7 Installation clip and recessed head screw 3.5 × 30
- 8 Counter batten
- 9 Support batten 50 mm × 30 mm

5. Outside Corner

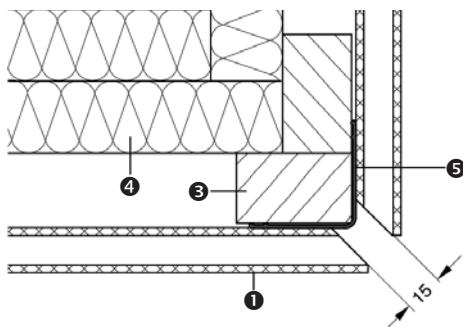
Overlapping outside corner C.



- 1 urbanedge_cladding structura facade profile
- 2 Outside corner C and cheese head screw 3.9 × 16 (only on top for securing)
- 3 Support batten 50 mm × 30 mm
- 4 Thermal insulation
- 5 Jointing tape

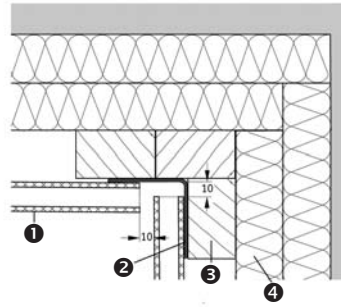
Alternative:

Open mitre joint with jointing tape laid behind.



6. Inside Corner

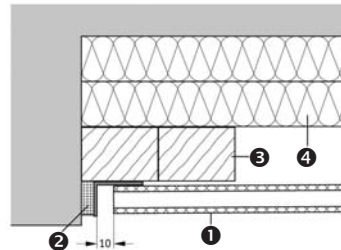
Inside corners with open butt joints.



- 1 urbanedge_cladding structura facade profile
- 2 Jointing tape
- 3 Support batten 50 mm × 30 mm
- 4 Thermal insulation

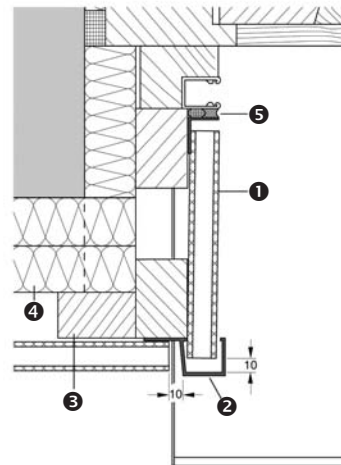
For butt joints to other construction materials:

Cover angle 30/20 and sealing material.



- 1 urbanedge_cladding structura facade profile
- 2 Cover angle and recessed head screw 3.5 × 30 mm; sealing material, e.g. Compriband
- 3 Support batten 50 mm × 30 mm
- 4 Thermal insulation

7. Window Reveal

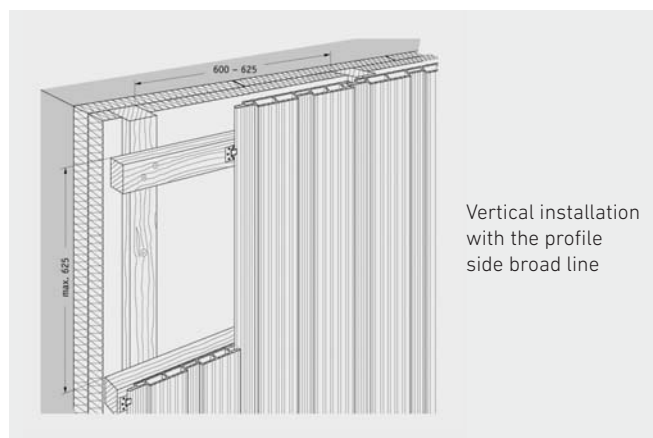


Window reveal with urbanedge_cladding structura or alternatively with cladding panel.

- 1 urbanedge_cladding structura facade profile
- 2 Connection profile F and recessed head screw 3.5 × 30
- 3 Support batten 50 mm × 30 mm
- 4 Thermal insulation
- 5 Cover angle and recessed head screw 3.5 × 30; sealing material, e.g. Compriband

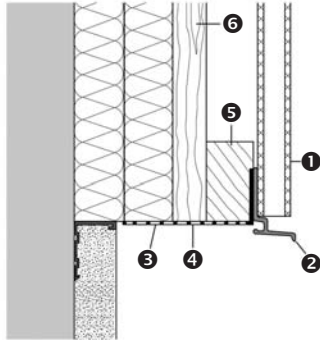


The vertical installation is identical for both profile sides.
The maximum fastening spacing for the profiles is 625 mm.



1. Start of Installation

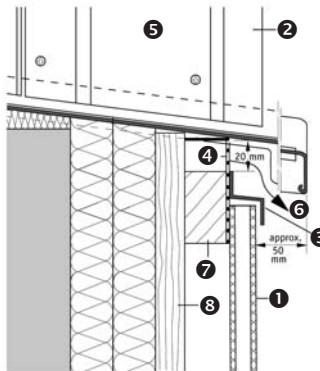
The urbanedge_cladding structura facade profile is not affected by splashing water. However, increased soiling should be expected in the area of the splashing water.



Recommendation:
Profile spacing of 300 mm to smooth floors, 150 mm to a gravel layer and approx. 20 mm to a metal grate. Avoid designs that allow moisture build-up.

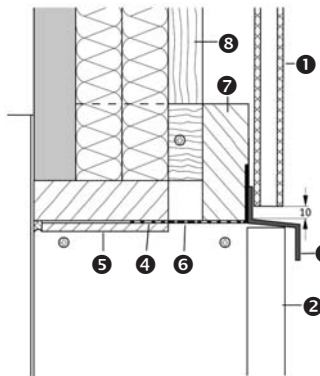
- 1 urbanedge_cladding structura facade profile
- 2 Layering profile
- 3 Ventilation profile, plastic
- 4 Ventilation opening, consistent
- 5 Support batten 50 mm × 30 mm
- 6 Counter batten

2. Window Sill / Roof Edge Connection



- 1 urbanedge_cladding structura facade profile
- 2 Connection profile F
- 3 Z profile 2; not necessary if the urbanedge_cladding structura facade profile is sufficiently well covered
- 4 Ventilation profile, plastic
- 5 Cladding panel (alternative to urbanedge_cladding structura)
- 6 Ventilation opening, consistent
- 7 Support batten 50 mm × 30 mm
- 8 Counter batten

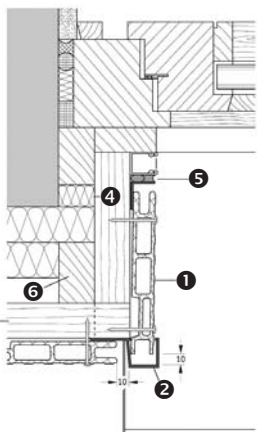
3. Window Lintel Connection



Mount the urbanedge_cladding structura profile end with a space of 10 mm to the connection profile to avoid direct contact with standing water. Fasten the lower profile end with screws, if necessary.

- 1 urbanedge_cladding structura facade profile
- 2 Connection profile F
- 3 Z profile
- 4 Ventilation profile, plastic
- 5 Cladding panel (alternative to urbanedge_cladding structura)
- 6 Ventilation opening, consistent
- 7 Support batten
- 8 Counter batten

4. Window Reveal



Window reveal with urbanedge_cladding structura or alternatively with cladding panel.

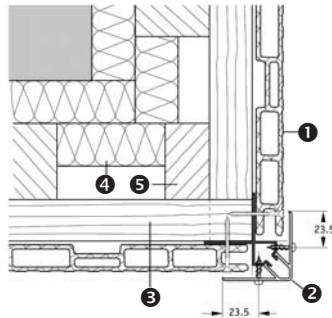
Screw visibly near a profile web using universal screws H 6 × 45, hole diameter 9 mm or lock screws 4 × 40.

- 1 urbanedge_cladding structura facade profile
- 2 Connection profile F
- 3 Support batten 50 mm × 30 mm
- 4 Thermal insulation
- 5 Cover angle and sealing material, e.g. Comriband
- 6 Counter batten

5. Outside Corner

For visible screws:

Lock screw 4 × 40 or universal screw H 6 × 45 (hole diameter 9 mm).

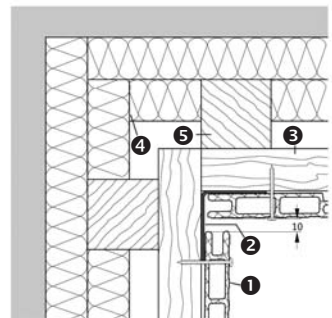


- 1 urbanedge_cladding structura facade profile
- 2 Outside corner C and cheese head screw 3.9 × 16 (for securing top outside corner C)
- 3 Support batten 50 mm × 30 mm
- 4 Thermal insulation
- 5 Counter batten

6. Inside Corner

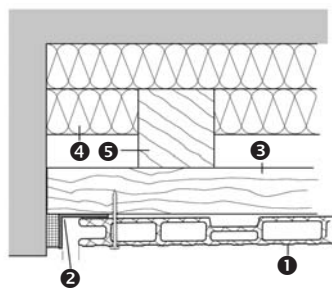
Inside corners with open butt joints and jointing tape.

For visible screws: Lock screw 4 × 40 or universal screw H 6 × 45 (hole diameter 9 mm).



- 1 urbanedge_cladding structura facade profile
- 2 Jointing tape
- 3 Support batten 50 mm × 30 mm
- 4 Thermal insulation
- 5 Counter batten

For butt joints to other construction materials: Cover angle 30/20 and sealing material.

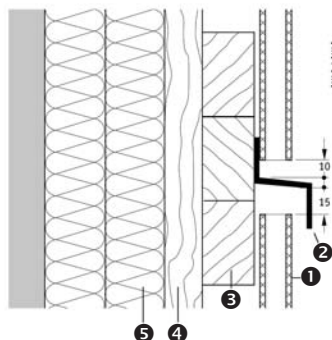


- 1 urbanedge_cladding structura facade profile
- 2 Cover angle and recessed head screw 3.5 × 30 mm; sealing material, e.g. Comriband
- 3 Support batten 50 mm × 30 mm
- 4 Thermal insulation
- 5 Counter batten

7. Horizontally Running Joint

Profile end of the lower profile with 5 mm/m expansion joint to the Z profile.

Profile end of the upper profile with a space of 10 mm to the Z profile to avoid direct contact with standing water.



Fasten the lower profile ends with screws, if necessary.

- 1 urbanedge_cladding structura facade profile
- 2 Z profile and recessed head screw 3.5 × 30
- 3 Support batten 50 mm × 30 mm
- 4 Counter batten
- 5 Thermal insulation
- 6 Installation clip and recessed head screw 3.5 × 30

ultra design composites offer a comprehensive range of innovative, composite building products, comprising of recycled industrial plastics and sustainably resourced wood fibres.

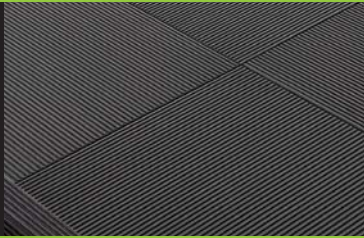
urbanedge_deck is available in two design profiles of urban edge groove or embossed wood grain, and has width options of 90mm, 143mm and 242mm, with four colour options: ash grey, bahama brown, sand and river bank.

urbanedge_deck



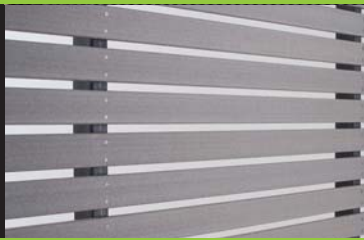
neourban_tile carries the urban groove design profile and is 442mm wide, with three colour options: ash grey, bahama brown, and terracotta.

neourban_tile



urbanedge_screen has a smooth design profile and is 60mm wide, with two colour options: ash grey and bahama brown.

urbanedge_screen



urbanedge_cladding is available in two design profiles of structura (double sided texture option) or siding, and has up to four colour options.

urbanedge_cladding



urbantable_tops are available in 100+ decors ranging from modern design, rustic rural charm or timeless and classic aesthetics. Available in a variety of sizes and shapes.

urban



1300 687 343

questions@ultradesigncomposites.com.au

www.ultradesigncomposites.com.au

a specialist division of  **Le Messurier**

ultra design composites™