

# Tandus Tricot

MODULAR CARPET

Reminiscent  
of luxurious  
knit fabrics



# Timeless, Classic, Beauty

When it comes to classic, iconic looks, there aren't many aesthetics out there more timeless than Coco Chanel's tweed fabric. A designer that changed the path of Women's fashion and influenced trends around the world, Chanel's tweed look first created in 1924 still radiates refinement and sophistication today.

Tarkett's Tricot collection features black and white base colours inspired by Chanel's iconic look. The distinctive knit aesthetic has clearly stood the test of time, a perfect example of timeless, classic beauty.





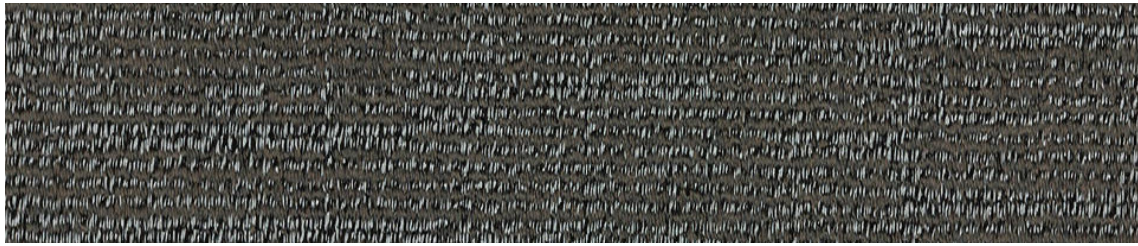


Tricot - ASPARAGUS Plank 25x100cm: 631002012 CITRON Plank 25x100cm: 631002023 Vertical Ashlar installation  
iD Inspiration Loose Lay - LIMED OAK BEIGE Plank 22.9x121.9cm: 24640000 Vertical Ashlar installation



FAILLE Plank 25x100cm: 631002004 LEAVES Plank 25x100cm: 631002005 Vertical Ashlar installation

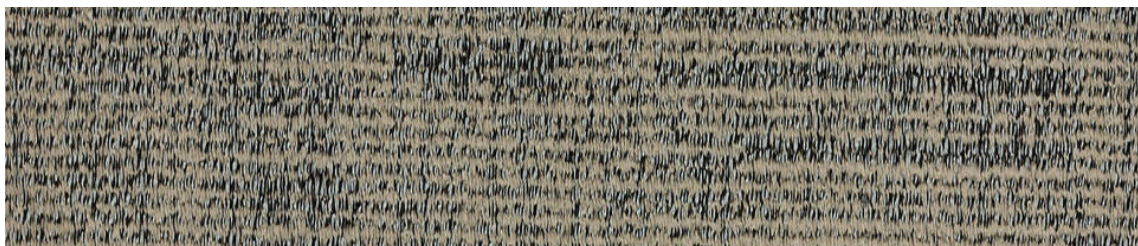




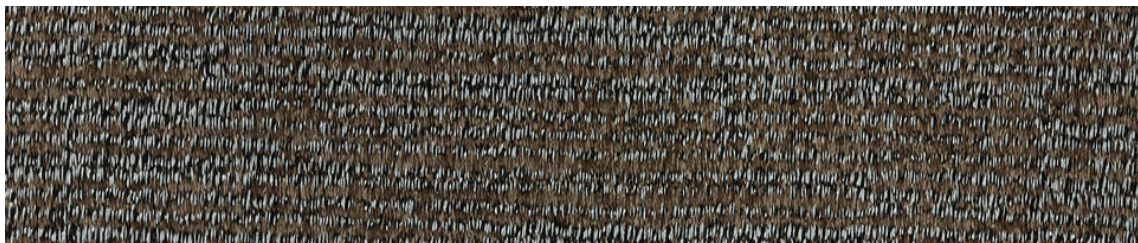
BOBBIN Plank 25x100cm: 631002001



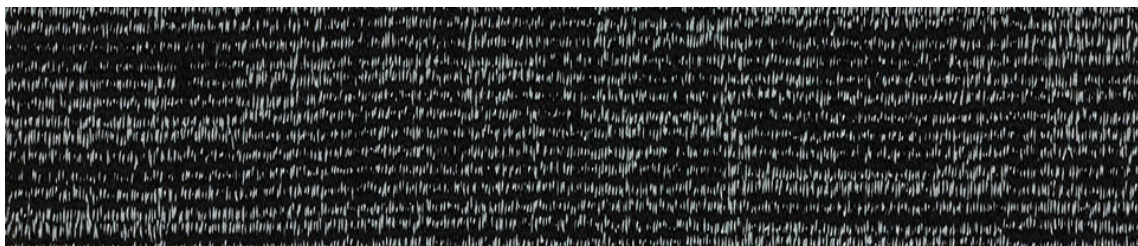
ALMOND Plank 25x100cm: 631002003



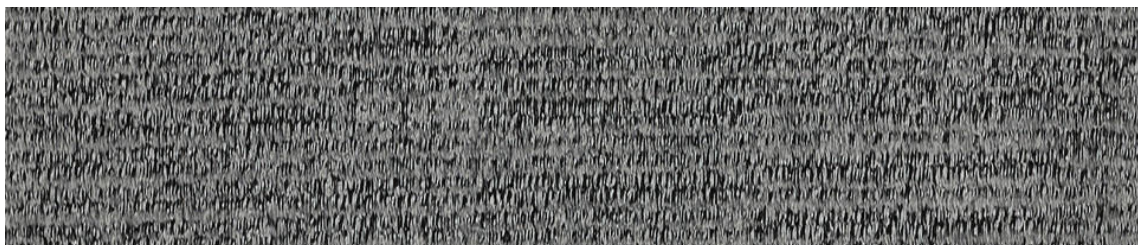
FAILLE Plank 25x100cm: 631002004



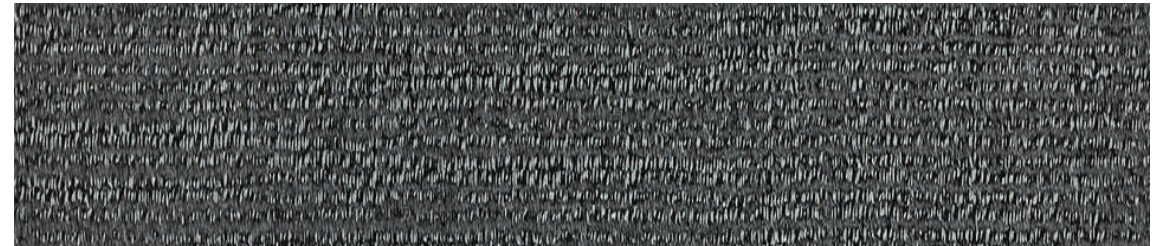
LEAVES Plank 25x100cm: 631002005



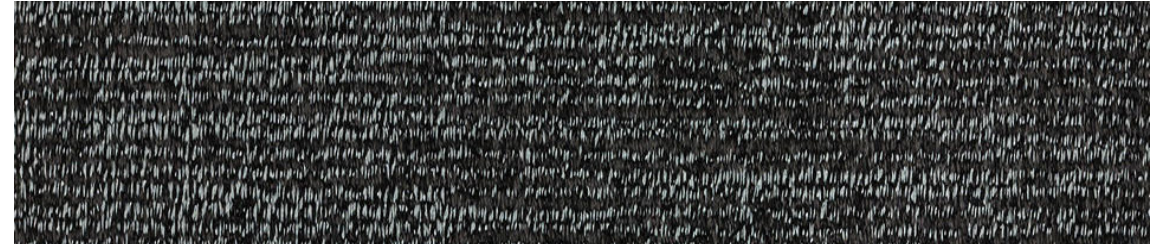
OCEANO Plank 25x100cm: 631002006



FELTING Plank 25x100cm: 631002007



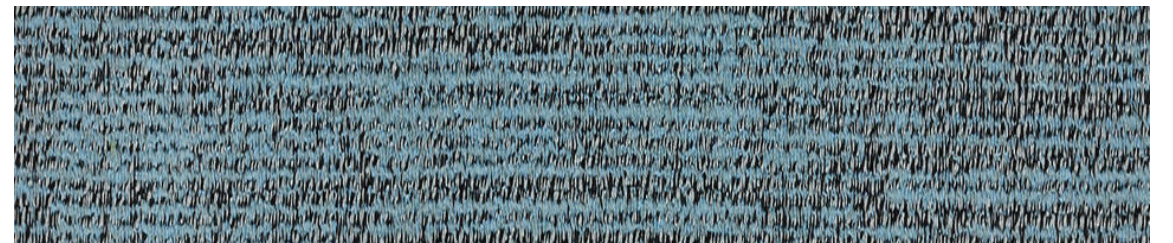
SATURATED Plank 25x100cm: 631002008



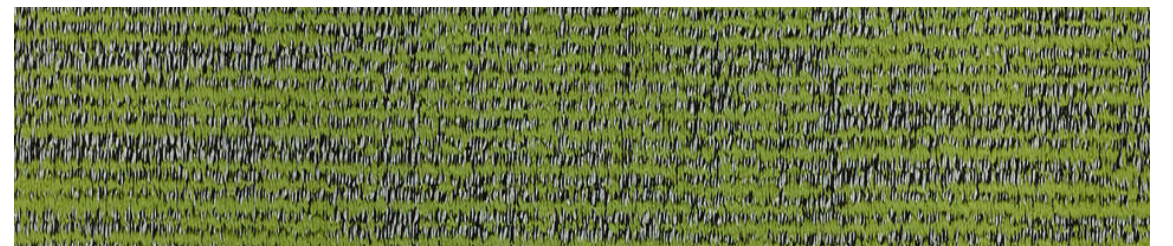
LOAM Plank 25x100cm: 631002009



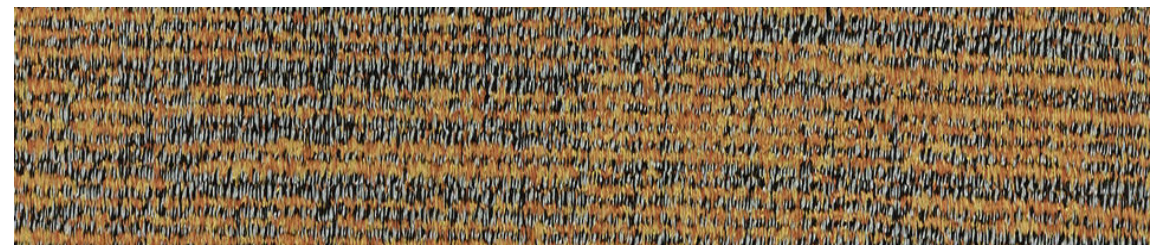
FIELDS Plank 25x100cm: 631002010



LINING Plank 25x100cm: 631002011

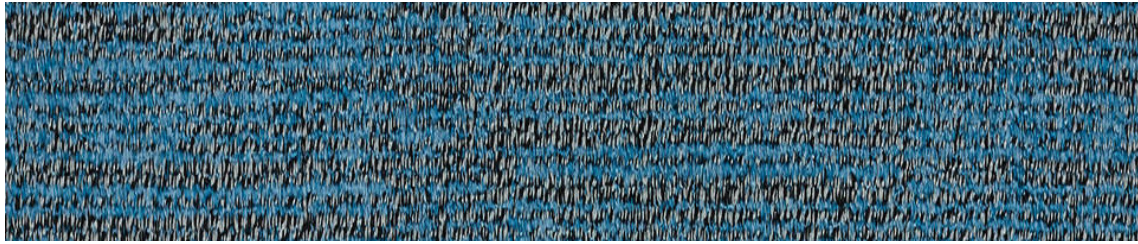


ASPARAGUS Plank 25x100cm: 631002012

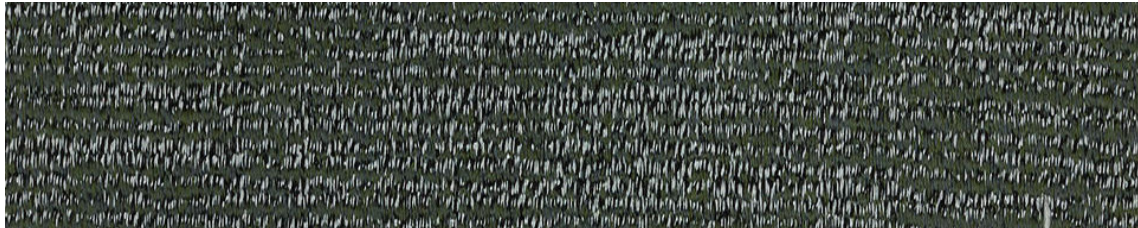


GINKO Plank 25x100cm: 631002013

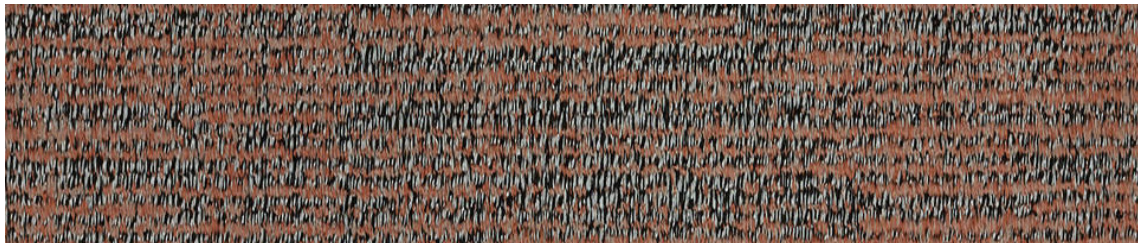




LUSTRINE Plank 25x100cm: 631002014



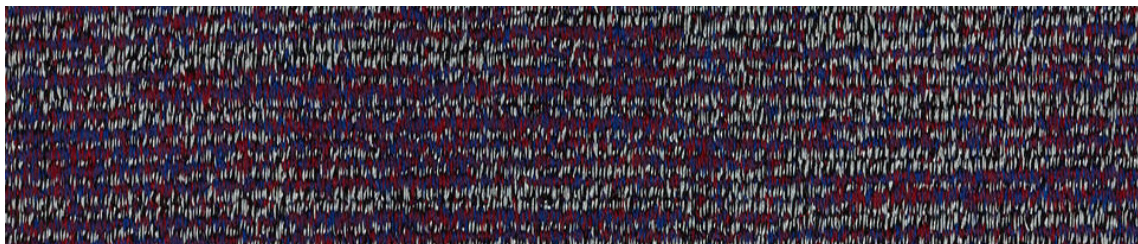
BOURNE Plank 25x100cm: 631002015



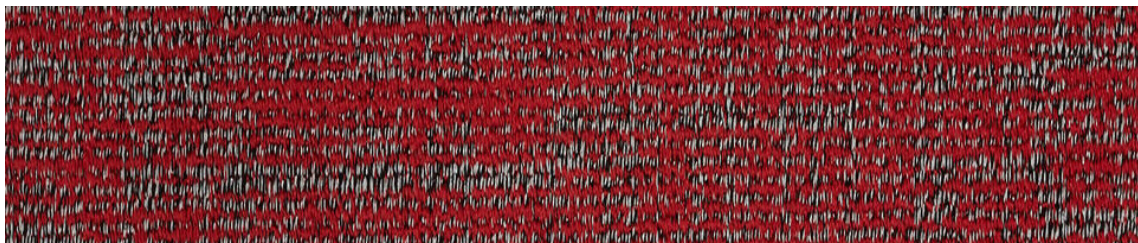
WILDERNESS Plank : 25x100cm: 631002016



AZURE Plank 25x100cm: 631002017



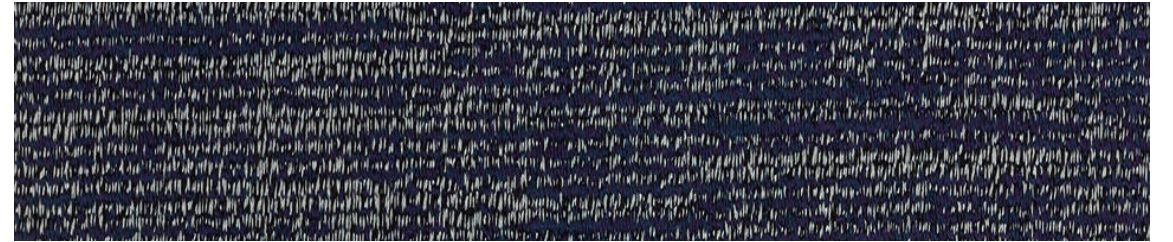
CRANBERRY Plank 25x100cm: 631002018



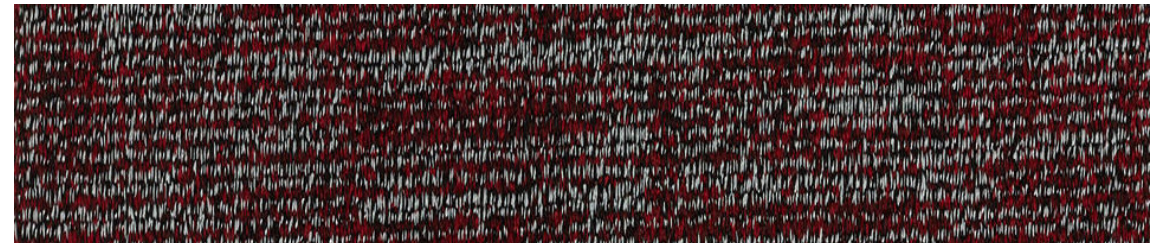
POPPY Plank 25x100cm: 631002019



MIDNIGHT Plank 25x100cm: 631002020



KOSHIBO Plank 25x100cm: 631002021



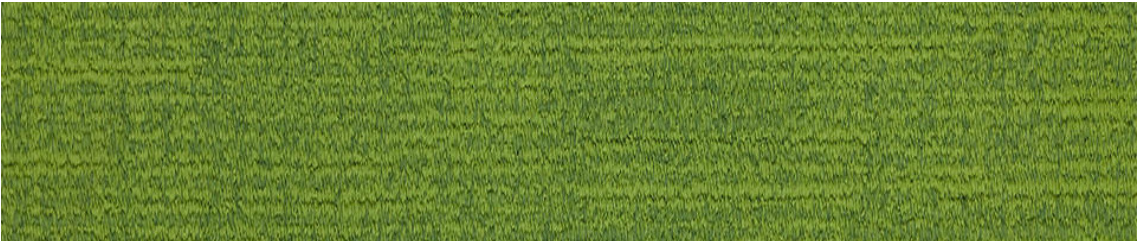
ZICRON RED Plank 25x100cm: 631002022



TONALS



CAMEO Plank: 25x100cm: 631002002



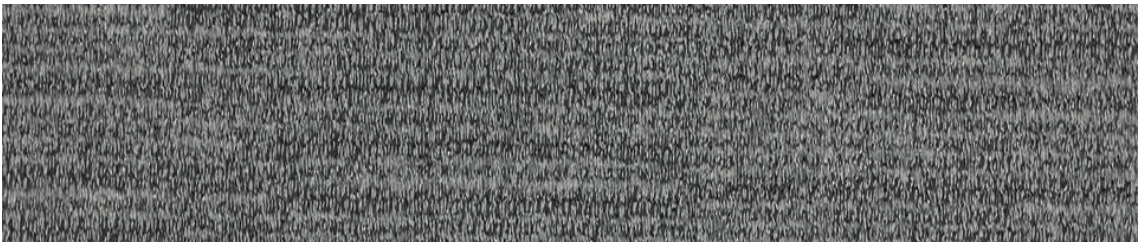
CITRON Plank 25x100cm: 631002023



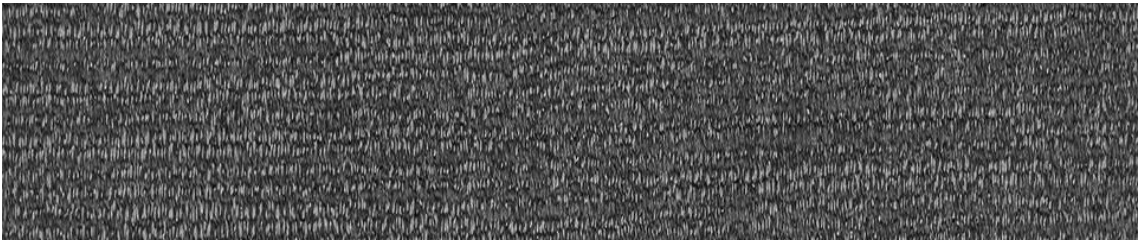
MAIZE Plank 25x100cm: 631002024



PONKAN Plank 25x100cm: 631002025



TUNDRA Plank 25x100cm: 631002026



CHROMA Plank 25x100cm: 631002027



FELTING Plank 25x100cm SATURATED Plank 25x100cm: 6310020008 LOAM Plank 25x100cm: 631002009  
Vertical Ashlar Installation



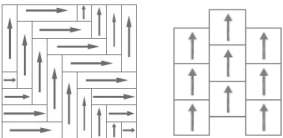
# TECHNICAL DATA SHEET

Product Characteristics		Standards	Tandus Tricot
Product Construction			Textured Loop
Yarn Type			100% Solution Dyed Type 6 Nylon
Gauge			1/13"
Primary Backing			Synthetic Non-Woven
Secondary Backing			ECOBOND™ recycled content backing
Stitches/length	ASTM D-148		33.0/10cm
Total Pile Weight			644.2 g/m2   19 oz/yd²
Total Weight			3894 g/m²
Surface Pile Density	UM44D		281.2 kg/m³
Thickness of pile above substrate	ASTM D-418		3.8mm (+/-0.5mm)
Total Thickness			6.3mm(+/-0.5mm)
Dimension			1000mm x 250mm
Installation Methods			Vertical Ashlar, Herringbone
Tiles per box/area			16 /4m²
Warranty			15 years
Performance Characteristics			
Reaction to fire	ISO AS 9239-1		Critical Radiant Flux 2.7kW/m² Smoke - 232 %.min
ACCS Grading			CEHD4 & Stairs
Electrostatic properties	AATCC 134		>3 kV
Colour fastness	AATCC 16E		≥ 4

### Recommended specification clauses for your project:

1. Product must be Tarkett carpet plank number starting with 631002.
2. 100% Solution Dyed Nylon carpet planks 1000mm x 250mm with ECOBOND™ backing.
3. 15 year commercial manufacturer's warranty.
4. Must be installed as per manufacturer's instructions.

The information in this data sheet is correct at date of publication however, due to Tarkett's commitment for ongoing product improvement, we reserve the right to change this information without notice. Please note that Tarkett's instructions regarding installation, cleaning and maintenance must be observed. Please contact Tarkett for further information on these instructions.



Disclaimer: Please note that products in photos are installed for creative purposes and not according to technical specifications. Please refer to Tarkett installation instructions for guidance.

Contact: Tarkett Australia  
P: 1300 851 484  
E: customerservice@tarkett.com  
W: www.tarkett.com.au



ZICRON RED Plank 25x100cm: 631002022





[www.tarkett.com.au](http://www.tarkett.com.au)

