

Smalls Rd Public School, Ryde NSW

3 Smalls Road, Ryde NSW 2112



Products Used

Studco Stud & Track Systems, Top Hats

Supporting school construction with engineered building solutions

The NSW Government is investing \$6.7 billion over the next four years to deliver 190 new and upgraded schools to support community growth across NSW. Studco® is proud to be delivering engineered building solutions for these school projects, including the exceptional new build at Smalls Road Public School in Ryde, NSW.



With a growing population in the Northern District area, the new primary school will consist of 43 learning spaces for 1000 students and 70 staff. The three-storey circular design, by Conrad Gargett Architects, wraps around a central courtyard at the heart of the school campus, to encourage student curiosity and collaboration.

Richard Crookes Construction engaged Studco Building Systems® to design and supply external framing solutions that would support the buildings continuous arc shape and façade cladding.

Studco Australia Pty Ltd

www.studcosystems.com.au
sales@studcosystems.com.au
P: 1300 255 255 F:03 9737 2555

Head Office

130-140 Merrindale Drive,
Croydon South, VIC, 3136

NSW Office

11 Avalli Rd,
Prestons, NSW, 2710

QLD Office

17 Telford Circuit,
Yatala, QLD, 4207

WA Office

11 Beete St,
Welshpool, WA, 6106

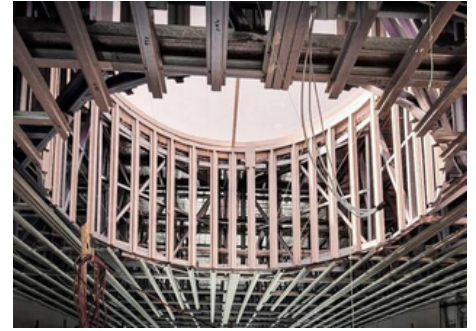




Studco's technical team engineered a structural framing solution using Studco Steel Stud & Track products.



Outdoor ceilings subject to external wind pressure are framed with Studco top hats for maximum strength.



Huge skylight features allow tinted natural light to filter into the stairwells.

The construction of the school's curved external walls posed significant challenges for the contractors and Studco's engineering team; resolved through collaborative designs and engineered solutions. The designs ensured a structurally sound external frame, using Studco's structural stud and track and top hat sections, without over complicating the installation process for the installers on site.

Studco takes pride in working closely with clients to provide effective solutions for external framing. Get in touch with Studco's Sydney engineers to find out how we can make a difference to your next project on 1300 255 255.

Contact Studco for project specifications and technical assistance.



Studco Australia Pty Ltd

www.studcosystems.com.au
sales@studcosystems.com.au
P: 1300 255 255 F: 03 9737 2555

Head Office

130-140 Merrindale Drive,
Croydon South, VIC, 3136

NSW Office

11 Avalli Rd,
Prestons, NSW, 2710

QLD Office

17 Telford Circuit,
Yatala, QLD, 4207

WA Office

11 Beete St,
Welshpool, WA, 6106



Engineered for Durability

Studco's steel Stud and Track Framing Systems have been used throughout the buildings at Whyalla Secondary College. The high-quality steel and engineering that has gone into the design of Studco products means that these facilities will be able to weather conditions for years to come. Studco steel frames feature across each building in this project at every level. Studco worked with Exclusive Linings' engineers to ensure the most effective and straightforward solutions were developed. The enhanced strength of Studco Steel Studs was particularly important, meaning they were safer and more reliable for load bearing over multiple stories.

One feature of the new Whyalla Secondary College is the bespoke wooden panelling within the gymnasium. Both wall and ceiling systems were provided by Studco for this building, serving both practical and aesthetic purposes. Studco's framing was designed to incorporate this design into its system for an impressive feature that does not compromise on quality.



On site during construction stage



Facilities at completion stage (image credit: Exclusive Linings)

Simple, Structurally Sound Ceiling Solutions

In much the same way Studco's stud and track framing was used throughout this project, Studco Concealed Ceiling Systems were present throughout construction. Both Studco's suspended and direct fix concealed ceilings are designed for easy handling and can be easily clipped together to form gridwork. These are key elements of Studco's products and are an effort to ensure installation is not unnecessarily complicated on-site, structurally sound and met industry standards through collaboration with Studco.

Studco's Concealed Suspended System sit above the school's classrooms and learning spaces. These systems allow for the housing of internal services which enable learning spaces to be an accessible and comfortable environment. The design of Studco's system also provide a level grid for the easy installation of building board with a flush finish.

The Concealed Direct Fix System is most prominently used within the gymnasium. Studco's system is engineered to meet an array of loading options and ceiling spans, which became a critical factor of the construction of this gymnasium. Not only does this system serve a functional purpose, but by remaining exposed it also lends itself to the architectural vision of bare steel in a nod to the Whyalla community.

Studco Australia Pty Ltd

www.studcosystems.com.au
sales@studcosystems.com.au
P: 1300 255 255 F: 03 9737 2555

Head Office

130-140 Merrindale Drive,
Croydon South, VIC, 3136

NSW Office

11 Avalli Rd,
Prestons, NSW, 2710

QLD Office

17 Telford Circuit,
Yatala, QLD, 4207

WA Office

11 Beete St,
Welshpool, WA, 6106





On site during construction stage



Facilities at completion stage (image credit: Exclusive Linings)

Studco is proud to have played a role in this educational project that focuses on teaching skills that have real world applications whilst catering to students with disability.

Have a dynamic project with technical demands? Contact the Studco team for specification and technical assistance at 1300 255 255.

Studco Australia Pty Ltd

www.studcosystems.com.au
sales@studcosystems.com.au
P: 1300 255 255 F: 03 9737 2555

Head Office

130-140 Merrindale Drive,
Croydon South, VIC, 3136

NSW Office

11 Avalli Rd,
Prestons, NSW, 2710

QLD Office

17 Telford Circuit,
Yatala, QLD, 4207

WA Office

11 Beete St,
Welshpool, WA, 6106

