

Hand Dryers

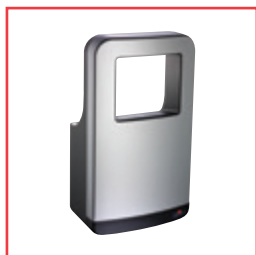




DISTINCT MODELS

TO MATCH ANY ASTHETIC

AND PERFORMANCE NEED



TRI-Umph™

High-Speed, Ultra-Fast Drying
Suitable For High Traffic Areas



TURBO-Dri™

High-Speed, Robust Design
Suitable For High Traffic Areas



TURBO-Slim™

High-Speed, Compact Design
Suitable For High Traffic Areas



TURBO-Chic

High-Speed, Elegant Design
Suitable For High Traffic Areas



Autobeam

Classic Design, Automatic
Suitable For High Traffic Areas



Touchdry

Classic Design, Button Operation
Suitable For High Traffic Areas



Applause

Stylish, Ultra-Quiet,
Suitable For Low Traffic Areas
Requiring Low Noise



Applause Plus

Low Cost, Automatic
Suitable For Low Traffic Areas



TURBO-Tuff™

High Speed, Recess Mount
Suitable for High Traffic Areas



TURBO 3-in-1

Practical 3in1 Design
Suitable For Any Washroom



Select Classic

Sophisticated 3in1 Design
Suitable For High-End Washrooms



Piatto™ 3-in-1

Fully Recessed Design
Suitable For High-End Washrooms

NB - all models are suitable for use in Accessible Compliant washrooms

Decibel Level
Min: 61 dB-A @ 2M
Max: 67 dB-A @ 2M

Dry Time: Approx. 15 seconds



10-64671-2-A SELECT CLASSIC G2 3-IN-1

Integrated stainless steel cabinet with three features in one installation. Manufactured from high quality 304 stainless steel Select Classic G2 provides a fully automatic high-speed hand dryer with adjustable air speed and temperature settings, paper towel dispenser and large capacity waste bin (26L). Easy installation and service via a security locked front door. Protected for shipment by PVC coating on all surfaces. 5 year warranty on hand dryer.

Overall Dimensions: 440 x 1515 x 202 mm
Wall Opening: 408 x 1494 x 120 mm (minimum)

Electrical Specifications:

Motor: 500 Watt, 22 - 29 KRPM, (adjustable), brush type, dual ball bearings
 Voltage: 220 - 240 VAC, 50/60 Hz
 Heater: 275 - 500 Watt
 Current: 3 - 4 Amps @ 240 VAC

Decibel Level
Min: 61 dB-A @ 2M
Max: 67 dB-A @ 2M

Dry Time: Approx. 15 seconds



10-64672-2-41 PIATTO™ 3-IN-1

Completely recessed in the plane of the wall without any protrusion. All hinges are concealed as is the latching system, leaving no visible hardware. Doors are made of phenolic and close silently. Features a high-speed automatic hand dryer with adjustable speed and temperature settings and 26 L waste bin. Dispenses 400 standard C-fold or 500 standard multi-fold paper towels. 5 year warranty on hand dryer.

Overall Dimensions: 391 x 1407 x 191 mm
Wall Opening: 392 x 1408 x 194 mm
Optional Finish:

Electrical Specifications:

Motor: 500 Watt, 22 - 29 KRPM (adjustable), brush type, dual ball bearings
 Voltage: 220 - 240 VAC, 50/60 Hz
 Heater: 275 - 500 Watt
 Current: 3 - 4 Amps @ 240 VAC

White
 10-64672-2-00

Decibel Level
Min: 61 dB-A @ 2M
Max: 67 dB-A @ 2M

Dry Time: Approx. 15 seconds



10-64672-2 TURBO 3-IN-1

Fully recessed and accessible compliant three-in-one unit. Features paper towel dispenser, high-speed automatic hand dryer with adjustable speed and temperature settings and 26L waste receptacle. Durable 304 stainless steel with satin finish provides seamless design suitable for any washroom. 5 year warranty on hand dryer.

Overall Dimensions: 391 x 1407 x 191 mm
Wall Opening: 358 x 1381 x 184 mm

Electrical Specifications:

Motor: 500 Watt, 22 - 29 KRPM (adjustable), brush type, dual ball bearings
 Voltage: 220 - 240 VAC, 50/60 Hz
 Heater: 275 - 500 Watt
 Current: 3 - 4 Amps @ 240 VAC

Decibel Level
Min: 69 dB-A @ 2M
Max: 69 dB-A @ 2M

Dry Time: Approx. 15 seconds



10-0135-2 TURBO-TUFF™ SATIN STAINLESS STEEL

Fast drying, automatic high-speed hand dryer. Infrared sensor with auto-resetting thermostat. Owner-adjustable air speed & temperature with on/off heating options. Blue LED guides user towards air flow. Dryer automatically shuts off after time-out. Durable type 304 satin finish stainless steel cover. Unit is recess mount and requires direct wiring (by an electrician). 5 year warranty.

Overall Dimensions: 320 x 400 x 103 mm

Electrical Specifications:

Motor: 500 Watt, 22 - 29 KRPM (adjustable), brush type, dual ball bearings
 Voltage: 220 - 240VAC 50/60Hz
 Heater: 275 - 500 Watt
 Current: 3 - 4 Amps @ 240 VAC



Decibel Level
Min: 63 dB-A @ 2M
Max: 69 dB-A @ 2M

Dry Time: Approx. 12 seconds



10-20200-2 TRI-Umph™ HIGH-SPEED HAND DRYER

Fast drying, automatic high-speed hand dryer with an ultra-hygienic triple HEPA filter. Satin look cover: ABS plastic with silver ions. Ergonomic — no need to bend over or bend knees. Air blows down from vents on top. Adjustable air speed and temperature. No water splash-back. 5 year warranty.

Overall Dimensions:
 322 x 588 x 197 mm

Electrical Specifications:
 Motor: 700 Watt, 14 - 18 KRPM (adjustable),
 brush type, dual ball bearings
 Voltage: 220 - 240 VAC, 50/60 Hz
 Heater: 400 - 800 Watt
 Current: 5 - 7 Amps @ 240 VAC

Optional Finish:

 White
 10-20201-2



Decibel Level
Min: 62 dB-A @ 2M
Max: 67 dB-A @ 2M

Dry Time: Approx. 15 seconds




10-0194-2-41 TURBO-Chic MATTE BLACK

Only 100mm deep, this high-speed hand dryer is both compact and stylish and can fit in most confined spaces with no need for a recess kit. Quick drying with infrared sensor, auto-resetting thermostat and adjustable air speed and temperature. Blue LED guides user towards air flow. Includes a carbon filter for prolonged motor life. Dryer automatically shuts off after time-out. 5 year warranty.

Overall Dimensions:
 152 x 268 x 100 mm

Electrical Specifications:
 Motor: 500 Watt, 22 - 29 KRPM (adjustable),
 brush type, dual ball bearings
 Voltage: 220 - 240 VAC, 50/60 Hz
 Heater: 275 - 500 Watt
 Current: 3 - 4 Amps @ 240 VAC

Optional Finish:

 Satin Stainless
 Steel
 10-0194-2-93



Decibel Level
Min: 63 dB-A @ 2M
Max: 69 dB-A @ 2M

Dry Time: Approx. 15 seconds





10-0197-2-92 TURBO-Dri™ POLISHED STAINLESS STEEL

Powerful high-speed automatic hand dryer. Quick drying with infrared sensor, auto re-setting thermostat, a 60 second automatic shut off and adjustable air speed and temperature settings. 5 year warranty.

Overall Dimensions:
 205 x 287 x 180 mm

Electrical Specifications:
 Motor: 700 Watt, 14 - 18 KRPM (adjustable),
 brush type, dual ball bearings
 Voltage: 220 - 240 VAC, 50/60 Hz
 Heater: 400 - 700 Watt
 Current: 5 - 6 Amps @ 240 VAC

Optional Finish:

 White
 10-0197-2
 Satin Stainless
 Steel
 10-0197-2-93



Decibel Level
Min: 61 dB-A @ 2M
Max: 67 dB-A @ 2M

Dry Time: Approx. 15 seconds





10-0199-2-41 TURBO-Slim™ MATTE BLACK

Only 102 mm deep, this high-speed hand dryer can fit in most confined spaces with no need for a recess kit. Quick drying with infrared sensor, auto-resetting thermostat and adjustable air speed and temperature. On/off heating options. Blue LED guides user towards air flow. Dryer automatically shuts off after time-out. 5 year warranty.

Overall Dimensions:
 270 x 216 x 102 mm

Electrical Specifications:
 Motor: 500 Watt, 22 - 29 KRPM (adjustable),
 brush type, dual ball bearings
 Voltage: 220 - 240 VAC, 50/60 Hz
 Heater: 275 - 500 Watt
 Current: 3 - 4 Amps @ 240 VAC

Optional Finish:

 White
 10-0199-2-00
 Satin Stainless
 Steel
 10-0199-2-93



Decibel Level
63 dB-A @2M

Dry Time: Approx. 20 seconds



HDABWHTSG AUTOBEAM: WHITE WITH SILVER GLOSS NOZZLE

Heavy duty steel automatic hand dryer with sensor operation. Large fan and motor assembly provides a high performance dryer designed for high traffic areas and heavy use. Easy installation with tamper-proof locking. 10 year warranty.

Overall Dimensions:
300 x 251 x 219 mm

Electrical Specifications:
Motor: 200 Watt, 5.5 KRPM, brush type, dual ball bearings
Voltage: 220 - 240 VAC, 50/60 Hz
Heater: 2200 Watt protected by thermal cut-out
Current: 10 Amps @ 240 VAC



Decibel Level
64 dB-A @2M

Dry Time: Approx. 20 seconds



HDTDWHTSG TOUCHDRY: WHITE WITH SILVER GLOSS NOZZLE & BUTTON

Heavy duty steel hand dryer. Solid touch button operation. Large fan and motor assembly provides a high performance dryer designed for high traffic areas and heavy use. Easy installation with tamper-proof locking. 10 year warranty.

Overall Dimensions:
300 x 251 x 219 mm

Electrical Specifications:
Motor: 200 Watt, 5.5 KRPM, brush type, dual ball bearings
Voltage: 220 - 240 VAC, 50/60 Hz
Heater: 2200 Watt protected by thermal cut-out
Current: 10 Amps @ 240 VAC

Optional Finish:



HDABPSSPC AUTOBEAM
Polished Stainless Steel with
Polished Chrome Nozzle



HDABWHTPC AUTOBEAM
White with Polished Chrome Nozzle



HDABWHTSC AUTOBEAM
White with Satin Chrome Nozzle



HDABSSSSC AUTOBEAM
Satin Stainless Steel with
Satin Chrome Nozzle



Decibel Level
55 dB-A @2M

Dry Time: Approx. 30 seconds



Decibel Level
66 dB-A @2M

Dry Time: Approx. 30 seconds



HDAPWHT APPLAUSE CLASSIC WHITE

Automatic hand dryer with sensor operation. Perfect for smaller environments requiring low noise levels. A low profile, whisper quiet unit. This design is streamlined, minimal and easy to clean. Durable steel casing with theft resistant torx screws. 1 year warranty.

Overall Dimensions:
250 x 361 x 146 mm

Electrical Specifications:

Motor: 100 Watt, 2.8 KRPM, dual ball bearings
Voltage: 220 - 240 VAC, 50/60 Hz
Heater: 900 Watt, protected by thermal cut-out
Current: 4 Amps @ 240 VAC



10-0165-2 APPLAUSE PLUS

Compact automatic hand dryer. Modern, durable design suitable for small areas. Quick drying, no touch, energy efficient operation. Blue LED guides user towards air flow. Standard white colour. 3 year warranty.

Overall Dimensions:
289 x 285 x 99 mm

Electrical Specifications:

Motor: 200 Watt, 5.5 KRPM, brush type, dual ball bearings
Voltage: 220 - 240 VAC, 50/60 Hz
Heater: 1600 Watt
Current: 7.5 Amps @ 240 VAC

Optional Finish:



HDAPSSS APPLAUSE
Satin Stainless Steel



HDAPPSS APPLAUSE
Polished Stainless Steel



Welcome to *ASI JD MACDONALD*: where innovation, speed and reliability provide *peace of mind*

JD MacDonald expanded into Washroom Accessories in 1959 - since then we have developed a following among Building Owners, Architects and Construction Professionals who count on us because we consistently deliver on a promise of quality, value, impeccable customer service and choice.

In 2013 JD MacDonald was acquired by the ASI Group and as the newly founded ASI JD MacDonald, we continue to provide more choices in hand dryers, paper towel dispensers, waste bins, combination units, grab rails, baby changing stations, soap dispensers, toilet paper dispensers and much more. Since then, we've expanded into toilet partitions, offering options in both structural and compact laminate. In addition we also offer a range of waste management products including garbage chutes, linen chutes and rotobins.

ASI GROUP

Privately owned and operated since inception the ASI Group now has operating units and offices in the US, Canada, Australia, Belgium, UK, Middle East and China, with sales in over 50 countries.

For over 50 years our companies have been known for innovative products and the widest choice in product and material for Washroom Accessories, Toilet Partitions, Lockers and other storage devices. Our nimble management philosophy allows us to deliver more products in 48 hours than anyone else in our industry and our flexibility allows us to create unique products to suit specific needs.

You will find one common thread that ties our family of companies together - a singular focus on our customer. That focus is captured in our mission statement: ***"To make our customers successful by providing a value greater than price and an excellent service experience."*** www.asigroup.us

OUR GLOBAL REACH: Allow our experienced architectural team to help you deliver on your promise of excellence as they have delivered on some of the most prestigious projects worldwide:

Corporate World HQ: Apple Corp., Coca Cola Corp., Facebook, Goldman Sachs (US)

Intl. Offices: Microsoft, Intel (China), HSBC (Egypt), Residence Palace, Antwerp Port House (Belgium)

Airports: Canberra Airport (AUS), JFK Intl., DFW Intl., Logan Intl. (US), Hong Kong Intl. (China)

Education: NYU Dormitories (UAE), Yale Univ., Stanford Univ., Univ. of Notre Dame (US)

Medical: Red Cross (AUS), Memorial Sloane Kettering, Mayo Clinic (US), Al Mafraq Hosp. (UAE)

Hospitality: Crown Plaza (Jordan), Ritz Carlton (US), Kempinski Hotel, Intercontinental Hotel (Qatar)

Entertainment: Shanghai Disney (China), Plopsa Water Parks (EU), MGM Grand Casino, Lincoln Center (US)

Stadiums: Yankee Stadium, Madison Square Garden (US), Doha Rugby and Football Stadium (Qatar)

Government: Royal Australian Airforce Base (AUS), US Embassy (China), Great Lakes Naval Base (US)

MORE CHOICES: Every building type, physical environment, project size and geography

- | | |
|---|--|
| • Hospitals and Health Care | • Restaurants and Chain Stores |
| • Universities and School Districts | • Hotels and Multi-Family Buildings |
| • Office Buildings | • Theatres and Entertainment Complexes |
| • Stadiums and Fitness Facilities | • Museums and Libraries |
| • Airports and Travel Hubs | • Theme Parks and Shopping Malls |
| • Government Buildings & Convention Centers | • Parks and Recreation Facilities |
| • Prisons and Security Facilities | • Warehouses / Manufacturing / Food Service Plants |

ASI JD MacDonald: Your *single source* for privacy, hygiene, safety and eco-friendly products.



ASI JD MacDonald Pty Ltd
ABN: 61 162 663 872
E: enquiry@asijdmacdonald.com.au
P: 03 8558 7200 F: 03 9548 1141

Free Call 1800 023 441

www.asijdmacdonald.com.au