



**SPANTECH**  
Corporate Profile



*We created a panel  
that spans further  
to deliver more  
for our clients*

# Company Profile



## The Australian design and construction company with unique construction technology

Spantech is a privately owned Australian construction company.

The company was established in 1984 to design and construct buildings using the Spantech Construction System.

Spantech developed and patented the system. It features a site rollformed construction panel with wide-span capabilities and a unique connection method.

Spantech has two profile sizes. The original 300 Series can span up to 30 metres wide. The 370 Series panel which was introduced in 2001 can span up to 40 metres wide. Both profiles can be manufactured as straight or curved panels. The result is a very versatile construction panel that is used for curved roofs, pitched roofs, walls and permanent formwork.

Spantech services a number of industries including: agriculture, aviation, education, commercial, defence, industrial, mining, public, sport, recreation and water.

The system was initially designed to economically store bulk grain and other agricultural produce. The early designs used the continuous curved panel to free-span between concrete footings to create a Quonset style building.

Today the panel is more commonly used as a free-span roof with the panels supported by walls or columns.

As the inventors of the technology, Spantech has a vested interest in ensuring the continuous improvement of the technology. The culture of creativity and resourcefulness within the organisation provides direct benefits to clients.

For example, Spantech designed and constructed a number of 11,000 tonne potato stores for McCain Foods at their processing

plants in Tasmania and Victoria. The buildings maintained potatoes for up to nine months with minimal loss or degradation. This was a key factor in McCain Foods securing the contract to provide French Fries to McDonalds and other major fast foods chains in South East Asia.

In 1991 Spantech constructed its first earth covered building to safely store explosives.

The design created international headlines when a number of Spantech buildings were tested in a series of full scale explosives trials at Woomera, South Australia. The Spantech Explosives Storehouses proved safer and more cost effective than alternatives, saving the Australian Department of Defence millions of dollars in the first explosives depot project alone.

The same construction technology is now applied to other types of hardened buildings such as Aircraft Shelters and underground Command Centres.

Spantech defence buildings are now constructed in the Middle East and South East Asia by appointed licensees in the United Arab Emirates and Malaysia. Projects are also constructed in New Zealand through the Australian head office.

The focus on delivering the best for clients through better design, more economical construction methods or more advanced technology remains a key factor in the success of Spantech.

The company is still owned and managed by one of the founding partners. Dick Lucas is a respected Queensland builder with a wide range of practical international construction experience. His inventiveness, work ethic and honesty in business are cornerstones of the company.

Dick is supported in the business by his wife, two sons and a team of highly skilled and experienced employees. A large percentage of the team have worked with Spantech for more than a decade, a few for significantly longer.

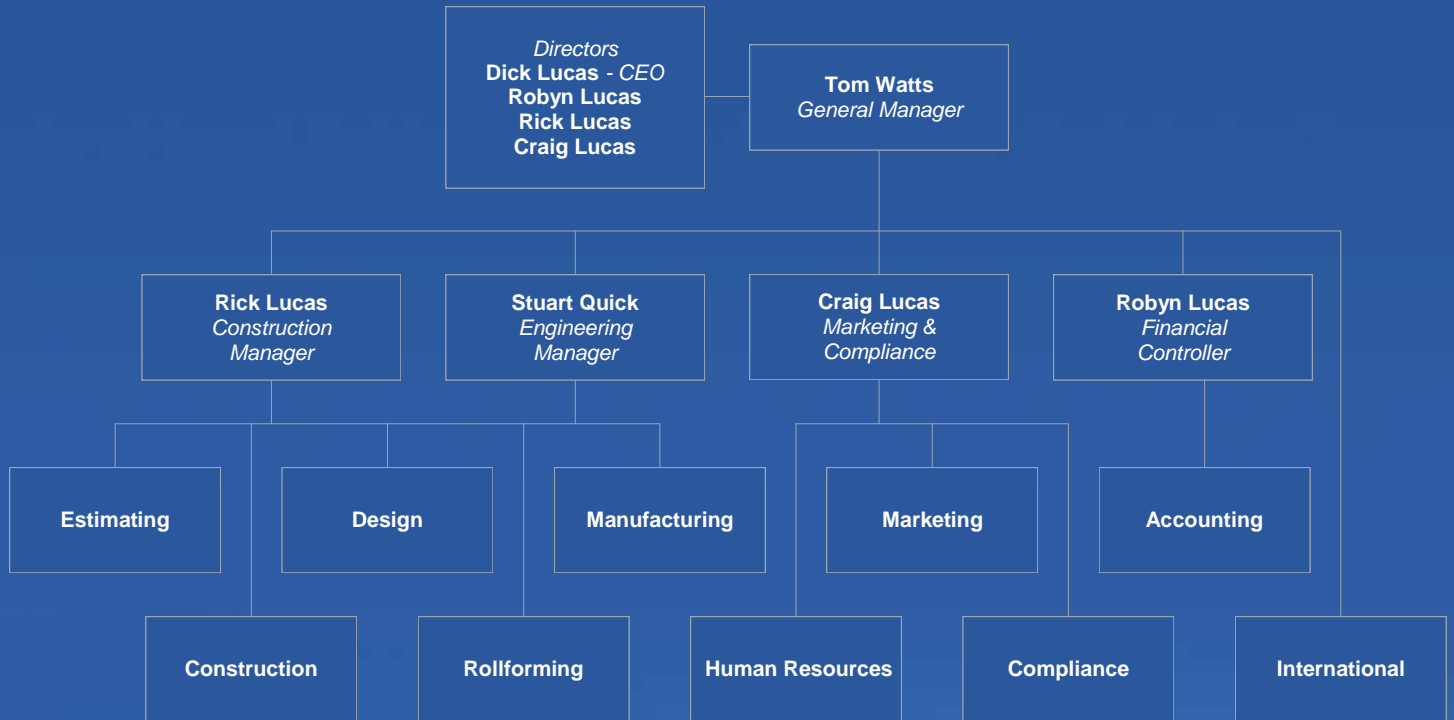
At Spantech we strive to go further to deliver more for our clients.

**Span further. Deliver more.**

# Company Details

Company Name	<b>SPANTECH PTY LTD</b>	
Australian Company Number	ACN 010 544 108	
Australian Business Number	ABN 53 010 544 108	
Date of Incorporation	30 October 1984	
Registered Business Address	36 Hutchinson Street Burleigh Heads, Qld 4220 Australia	
Postal Address	PO Box 622 Broadbeach, Qld 4218 Australia	
Telephone	+61 7 5593 4449	
Facsimile	+61 7 5593 4448	
Email	<a href="mailto:enquiries@spantech.com.au">enquiries@spantech.com.au</a>	
Website	<a href="http://www.spantech.com.au">www.spantech.com.au</a>	
Ownership	Private	
Bankers	National Australia Bank 2 Classic Way, Treetops Square, Burleigh Waters, Qld, 4220	
Accountants	Chotais Chartered Accountants 41 Sherwood Road Toowong, Qld, 4066	
Builder's Licence Number:	QLD:	BSA 659809 Director / Nominee: Richard Lucas Builder-Open BSA 12441
	SA:	BLD 219033
Insurance Brokers	AON	
Insurances	Public and Products Liability	\$20m
	Professional Indemnity	\$5m
	Annual Construction Risk	\$5m
	Motor Vehicle Fleet	\$20m
Worker's Compensation	QLD:	WAA850797423
	NSW:	WC290087157
Certified Management System	Quality Assurance to ISO 9001:2008 OHS to AS/NZS 4801:2001 Certification by BSI	

# Corporate Structure



# Expertise

## Spantech brings experience and unique solutions to every project

### Agriculture

Spantech builds horizontal bulk grain stores at grain terminals, ports or on farms.

Spantech's Potato Stores are an integrated system designed for the extended storage of potatoes used in the production of French Fries and Oven Fries. This high quality storage can be built on-farm or at processing plants.

### Aviation

Airport Terminals and Aircraft Hangars alike benefit from the clear wide spans achieved by the Spantech system.

### Defence

Spantech is a world leader in the design and construction of hardened earth-covered buildings.

Spantech's technology has been used to design and construct buildings to store and process explosives, protect and service fighter aircraft, underground command centres and personnel shelters, plus a variety of buildings to protect essential services such as generators and high value front-line equipment.

A selection of non-hardened buildings have been delivered to international defence departments including weapons training centres, secure guardhouses and weather protection structures for key plant and equipment.

### Education

Since 1985 Spantech has delivered cost effective Covered Outdoor Learning Areas, Shade Structures over multipurpose Sports Courts, Multipurpose Halls and specialised learning facilities for schools. Spantech works with the school's Architects to deliver functional and affordable facilities which compliment or enhance the school's Master Plan.

### Commercial and Industrial

Numerous Offices, Retail Centres, Factories, and Warehouses have used either curved or pitched Spantech roofing solutions.

Spantech has also created specific solutions for Recycling Centres where highly corrosive chemicals and atmosphere may exist.



## Mining

Bulk Copper Concentrate Stores where the extremely heavy material can be stacked against walls have been constructed at ports including Port Kembla. Spantech helped to maximise the efficiencies of portside storage and minimise handling costs.

## Public

Railway Stations, Bus Stations and Public Cyclone Shelters feature in Spantech's range of public buildings.

Spantech is also currently testing roofing profiles to make Public Fire Refuges more affordable for those communities at risk.

## Reservoir Roofing

All of Spantech's profiles can be rolled from either Colorbond pre-painted steel or ultra-long-life aluminium, creating a roofing alternative ideal for covering water reservoirs.

## Sport and Recreation

Almost any indoor sport can be accommodated in a Spantech building.

Court based sports such as basketball, netball, tennis and futsal are well within the range of a Spantech building.

Spantech has also constructed facilities for indoor soccer, ice skating and roller skating, horse riding, and even shooting.

Community Centres have been constructed for Councils to provide a focal point for community sports and cultural events. Some of these buildings have been upgraded to provide refuge and disaster relief centres in the event of cyclone, flood or bush fire.

## Swimming Pools

New and existing swimming pools can be covered with a Spantech roof. Insulation and acoustic ceilings that will resist the effects of swimming pool chemicals can be incorporated.

## Remote Construction

The experience and knowledge gained over decades of building defence and agricultural projects in isolated locations across Australia and New Zealand has made Spantech an expert in remote construction.

Many senior members of Spantech's construction team have also worked in Saudi Arabia, Malaysia or the United Arab Emirates supporting or training our international licensees.



# Technology

Spantech's construction technology is strong, fast to erect and cost effective.

The company developed a unique method of connecting rollformed metal roofing panels together.

The panels are joined with a patented interlocking clip that is formed at the edge of each panel. There is no need to use fasteners or mechanical folding to join the panels. The result is a fast watertight and strong connection that adds to the strength of the panel without stressing or weakening the base metal material or its protective coating.

Spantech panels are rollformed on site in continuous lengths. The first stage of rolling creates a straight panel used for pitched roofs, walls and permanent formwork. The second stage curves the panel to a preset radius to form a curved roofing panel or permanent formwork.

The material is either pre-painted Colorbond or galvanised steel available in thicknesses from 0.8mm to 1.2mm thick. Aluminium can also be used for selected applications.

The Spantech system is currently available in two sizes:

## The 300 Series

- Material thickness: 0.8 or 1mm
- Maximum curved panel span: 33 metres
- Maximum straight panel span: 7 metres

## The 370 Series

- Material thickness: 1.2mm
- Maximum curved panel span: 40 metres
- Maximum straight panel span: 9 metres

Wider spans may be possible with additional structural support.

Loads can be suspended directly from the roof via ceiling clips or additional structural fixtures to a maximum of 1 tonne per/metre (roof length).

The Spantech panels can accommodate a wide range of conventional construction finishes and features.

Skylights and rotary vents sit neatly within the base of the roofing pan.

Insulated and acoustic ceilings can be either curved to follow the roof line, or a suspended ceiling system.

A roof access system is also available with fixing points specifically designed to suit the Spantech panel.





# Performance



Spantech's construction capabilities and business success has been recognised with a number of prestigious national and international awards.

## New Zealand Defence Force Awards

Minister of Defence  
Awards of Excellence to Industry, 2006  
**Very Highly Commended**  
Project: Waiouru ESH

## Australian Department of Defence Awards

Australian Defence Industry  
Quality and Achievement Award, 1997  
**Winner - Facilities and Property**  
Project: ESH, HMAS Stirling

Australian Defence Industry  
Quality and Achievement Award, 1993  
**Winner - Facilities and Property**  
Project: Myambat Supply Co, ESH

Australian Defence Industry  
Quality and Achievement Award, 1991  
**Finalist - Projects under \$20m**  
Project: ESH, RAAF, Darwin

## Industry Awards

AusIndustry Achievement Award, 2001

Queensland Business Awards, 1993

Australian Business Award, 1991





## Sustainability

Spantech operates an Integrated Management System to eliminate or control the risks associated with safety, quality and the environment.

The safety components of the system are designed to protect individuals, quality elements protect the interests of our clients, while the environmental elements protect the community as a whole.

The integrated system is designed to ensure a sustainable future for everyone affected by the operations of our company.

### Quality Assurance

The system was first implemented in 1997 as a Quality Management System

that complied with AS/NZS ISO 9001. Constant improvement to the system is testament to Spantech's commitment to quality.

Spantech is a recognised supplier to the Australian Department of Defence and has been awarded a number of Defence Quality Awards in both Australia and New Zealand.

Spantech is also committed to maintaining the quality of its technology with an on-going research and development program.

### Health and Safety

Spantech has a lost-time injury record well below the industry benchmark.

The safety elements of the integrated management system are independently audited and certified by auditors BSI as being compliant with AS/NZS 4801.

### Environmental Management

Spantech maintains an impeccable environmental record.

The company's integrated management system includes comprehensive environmental management procedures. Environmental Plans which meet the demands of the Australian Defence Force and all regulatory requirements are prepared and implemented for each project.



Spantech's Policies available at [www.spantech.com.au](http://www.spantech.com.au)





Projects

# Agriculture



## ABB Grain, Mt. Maunganui

Client	ABB
Project	Bulk grain store
Location	Mt Maunganui, New Zealand
Completion	2008
Scope	Design and construct a wide-span roof

The ABB grain handling facility includes over 9,000 sq/m of distinctive Spantech roofing. The structure is the widest clear span roof constructed by Spantech to date using the 370 Series profile to achieve a span of 41.6 metres.

The roof is supported on 6.5 metre high precast concrete walls with a roof apex height of 15 metres.

The roof includes double-sided pre-painted ColorGuard steel for extended life, a completely sealed internal finish, skylights, actuated controlled roof vents and end wall louvres.



07 559 4449  
enquiries@spantech.com.au  
www.spantech.com.au

# Aviation



## Roma Airport Terminal

Client	Maranoa Regional Council
Project	Roma Airport Terminal
Location	Roma, Qld
Architect	Sanders Turner Ellick Architects
Completion	2011
Scope	The mining industry, with its extensive fly-in-fly-out work force, requires modern, efficient transport infrastructure.

Spantech was selected to design and install the angled structural steel columns and beams, Spantech 300 Series curved roof, flashings and insulated acoustic ceilings for the Roma Airport Terminal.

A complex intersection of self supporting curved roofs and a distinctive dark coloured roof features in the striking architectural design by Sanders Turner Ellick Architects.

Referee	Steve Turner Sanders Turner Ellick Architects
---------	--



07 559 4449  
enquiries@spantech.com.au  
www.spantech.com.au

# Industrial



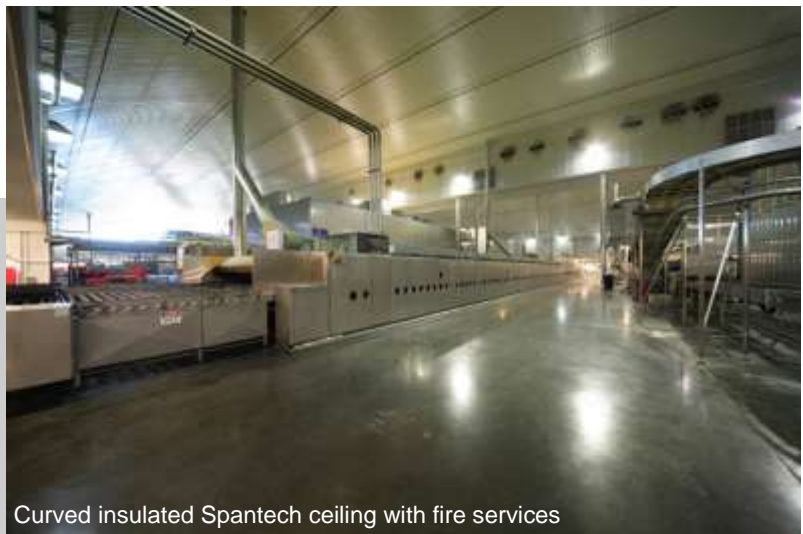
## George Weston Foods Bakery

Client	George Weston Foods Limited
Project	George Weston Foods Bakery
Location	Chullora, NSW
Architect	GHD Pty Ltd
Builder	AW Edwards
Completion	2006
Scope	George Weston's Tip Top Bakery is the fourth largest bakery in the world, capable of producing 27,000 loaves of bread per hour.

Spantech 300 Series curved panels span the central core of this impressive large structure in a striking double span.

The ceiling is insulated and lined with perforated custom orb. Fire services are suspended directly from the self supporting Spantech panels.

Referee  
Greg Darcy  
AW Edwards  
gdarcy@awedwards.com.au



Curved insulated Spantech ceiling with fire services



Façade roof by others



07 5593 4449  
enquiries@spantech.com.au  
www.spantech.com.au

# Mining



## Hyrock, Port Kembla

**Client** Hyrock Pty Ltd  
**Project** 40,000 tonne copper concentrate bulk storage facility  
**Location** Port Kembla, NSW  
**Scope** Design and construct a 40 x 100m bulk store with buttressed tilt slab walls and concrete slab suitable for side loading of copper-concentrate up to 7m high.

Spantech used its 370 Series panel to achieve a 40 metre clear span.

Spantech's design incorporates openings and fixtures to accommodate material handling conveyors and hoppers.

The project was completed in less than six months and commissioned on 27 May 2006.

The Spantech building has helped to dramatically reduce handling costs, loading times and product loss at the facility.



07 559 4449  
enquiries@spantech.com.au  
www.spantech.com.au

# Education



## King's Sports Centre (Stage 2)

Client	King's Christian College
Project	King's Sports Centre, Stage 2
Location	Reedy Creek, Qld
Architect	Facility Design Group
Completion	September 2012
Scope	Design a complete indoor sports facility and construct the project in stages to suit the school's budget.

The facility features a major indoor sports hall with multipurpose courts for basketball, netball, futsal and volleyball.

A two story central hub includes four classrooms, a gymnasium, a staff room and two sets of amenities to service the sports hall and the future swimming pool hall.

Referee	Lyndon Brewer Kings Christian College Phone: (07) 5587 7600
---------	---



07 559 4449  
enquiries@spantech.com.au  
www.spantech.com.au



# Education



Stage 2

## Northpine Christian College

Client Northpine Christian College  
Project Multipurpose Hall  
Location Dakabin, Qld  
Completion Stage 1 - 2007, Stage 2 - 2009  
Scope Spantech designed and constructed a multipurpose hall in two stages to suit the budgetary requirements of the College.

Stage 1: Shade structure over an existing double basketball court (*top right*).

Stage 2: Fully enclose the structure adding a new concrete slab, side walls, doors and windows, insulated ceiling, fire and electrical services, sports floor and sports equipment (*above and bottom right*).

Plus extend the original structure to include a new feature entrance, stage and storage areas.

Referee Graham Baird (Principal) 07) 3204 6511



Stage



Stage 2



07 559 4449  
enquiries@spantech.com.au  
www.spantech.com.au

# Education



## Northpine Christian College

Client Northpine Christian College  
Project Senior School Multipurpose Court Cover  
Location Dakabin, Qld  
Completion 2006

Scope The contract included the design and construction of a permanent shade structure over two existing basketball courts. It included an annex large enough to seat a class for pre-game briefings.

The design had to consider and allow fire truck access to the remainder of the College.

With limited run-off available on one side of the courts, permanent column padding was installed to ensure the safety of students and others who use the facility outside school hours. Padding is secured with concealed locks to prevent theft.

Referee Graham Baird (Principal)  
07) 3204 6511



07 559 4449  
enquiries@spantech.com.au  
www.spantech.com.au

# Education



## Marymount College

Client Marymount College  
Project Junior School Multipurpose Hall  
Location Burleigh Heads, Qld  
Architect Bertoldi Architects  
Completion 2010  
Scope Spantech was contracted as a nominated subcontractor to install structural steel and an insulated roof.

This distinctive architecturally designed complex includes two partially open multipurpose courts, three classrooms, a canteen, storages and amenities on both levels. Terrace seating along one court is complimented by wide tiered steps that lead up to the stage.

The open sided structure is cool and light all year round.

Referee Lawrie Bertoldi  
Bertoldi Architects  
07) 5530 4660



07 559 4449  
enquiries@spantech.com.au  
www.spantech.com.au

# Education



## Trinity Sports and Aquatic Centre

Client Trinity Catholic College  
Location Lismore, NSW  
Completion March 2006  
Scope Spantech designed and constructed the multipurpose sports and performance facility for this preschool to Yr12 school.

The facility includes a 25m waveless indoor swimming pool and a 400 seat grandstand.

The multipurpose hall includes two indoor sports courts for basketball and netball, a full performance stage, stage wings, lighting/sound control booth, make-up and storerooms. Under the stage is storage for over 1,000 seats.

The facility also includes classrooms and space for a future gymnasium.

Referee Roz Robinson, Trinity Catholic College  
[www.trinitylismore.nsw.edu.au/](http://www.trinitylismore.nsw.edu.au/)  
[www.trinityaquatic.com.au/](http://www.trinityaquatic.com.au/)



07 559 4449  
[enquiries@spantech.com.au](mailto:enquiries@spantech.com.au)  
[www.spantech.com.au](http://www.spantech.com.au)

# Education



## Emmanuel College

Client	Emmanuel College
Project	Junior School Shelter
Location	Carrara, Gold Coast, Qld
Completion	February 2012
Scope	Design and construct a covered learning area over an existing concrete sports court.

The multipurpose play area is adjacent to the school oval near the front entrance of the school.

The all weather building is now the designated pick-up area for Grades One to Three, making it safer for children and much more convenient for parents.

The Spantech building replaced an aging portal frame structure and a number of shade sails.

Referee  
Bruce Ward  
[bward@emmanuel.qld.edu.au](mailto:bward@emmanuel.qld.edu.au)



07 5593 4449  
[enquiries@spantech.com.au](mailto:enquiries@spantech.com.au)  
[www.spantech.com.au](http://www.spantech.com.au)

# Defence



## Myambat Explosives Depot

Client	Department of Defence, Army
Project	Myambat Supply Company, ESH
Location	Myambat, NSW
Completion	1992
Scope	Construct 34 No. 23m Spantech ESH

Spantech won the contract to build 34 Spantech Explosives Storehouses after extensive full scale trials primarily aimed to identify the most effective solution for the Myambat project. Construction was completed in 12 months, much faster and for significantly less than Defence's original budget estimate.

Each 23m ESH is licensed to store up to 75,000 kg NEQ of HD 1.1 at D3 and D4 NATO inter magazine safety distances. Each building can nominally store 380 pallets.

**Awards** 1993 Australian Defence Industry Quality and Achievement Award Winner - Facilities and Property



07 559 4449  
enquiries@spantech.com.au  
www.spantech.com.au

# Sports Centres



## Goonellabah Sports and Aquatic Centre - Sports Hall

Client Lismore City Council  
Project Sports and Aquatic Centre  
Location Goonellabah, NSW  
Completion 2009  
Scope Design and construction of an indoor sports and aquatic centre including:

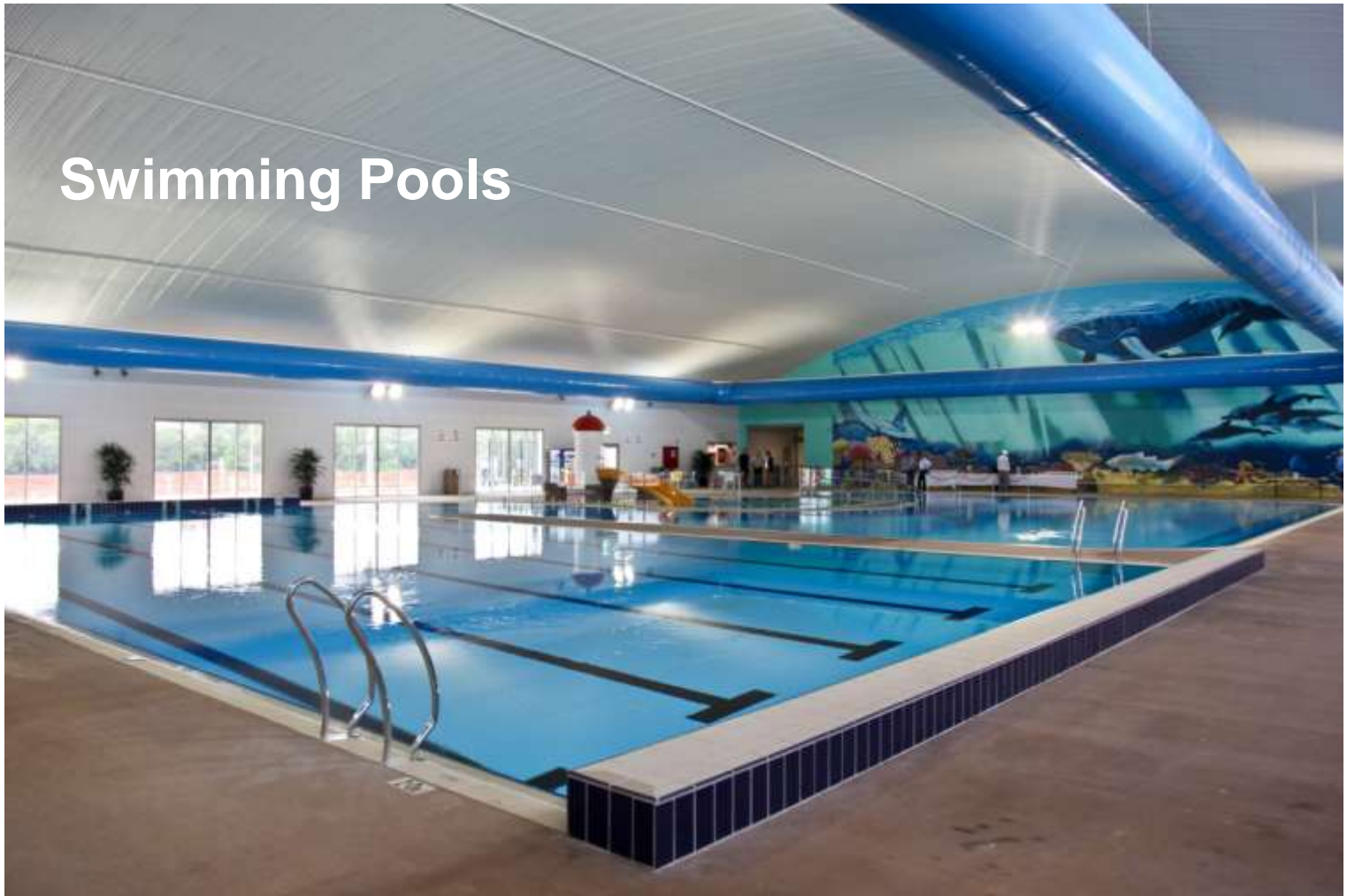
- Car park and landscaping
- 2 multipurpose courts
- 25m pool, leisure and toddlers pool
- Waterslide
- Humidification system
- Gymnasium, crèche, administration area, two youth halls and amenities

Referee Scott Turner  
Lismore City Council  
07) 6625 0500



07 559 4449  
enquiries@spantech.com.au  
www.spantech.com.au

# Swimming Pools



## Goonellabah Sports and Aquatic Centre - Pool Hall

Client	Lismore City Council
Project	Sports and Aquatic Centre
Location	Goonellabah, NSW
Completion	2009
Scope	Design and construction of an indoor sports and aquatic centre including: <ul style="list-style-type: none"><li>• Car park and landscaping</li><li>• 2 multipurpose courts</li><li>• 25m pool, leisure and toddlers pool</li><li>• Waterslide</li><li>• Humidification system</li><li>• Gymnasium, crèche, administration area, two youth halls and amenities</li></ul>
Referee	Scott Turner Lismore City Council 07) 6625 0500



07 559 4449  
enquiries@spantech.com.au  
www.spantech.com.au



Water



## Onkaparinga Reservoir Roof

Client Brice Engineers Pty Limited  
 Project Onkaparinga 10ML Reservoir Roof  
 Location Kelly Road, Onkaparinga Hills, SA  
 Completion 2002  
 Scope Supply and installation of roof cladding

The scope included:

- Supply, manufacture and installation of roof cladding
- Walkway
- Rails
- End wall cladding
- Associated flashings

Referee Norm Brice  
 07) 4774 8737



07 559 4449  
 enquiries@spantech.com.au  
 www.spantech.com.au

# Potato Stores



## Talley's Potato Stores

Client Talley's Group  
Project Potato Stores  
Location Ashburton, New Zealand  
Completion Constructed in 3 stages  
Scope Spantech designed and constructed a series of Spantech 11,000 tonne potato stores for Talley's Vegetable Division at their Ashburton processing plant.

The fully automated climate control system and insulation sprayed directly to the inside of the Spantech panel maintains the temperature within the store at 4 degrees Celsius, year round.

The buildings store potatoes that are processed as French Fries and Oven Fries for export to Australia and Asia.

Referee Talley's Group Limited  
P.O. Box 5, Motueka, New Zealand  
Phone: +64 3 528 2800



07 559 4449  
enquiries@spantech.com.au  
www.spantech.com.au



**Certificates and Licenses**

# Builder's Licence (Qld)



1119 659809  
SPANTECH PTY. LTD.  
PO BOX 622  
BROADBEACH QLD 4218



**Please read  
the important  
information about  
your BSA licence  
on the back of this  
page.**

**ATTACH  
CARD HERE**

**CONTRACTOR LICENCE**



Helping  
Queenslanders  
Build Better

NAME	SPANTECH PTY. LTD.		
LICENCE NUMBER	659809	EXPIRY DATE	01/10/14
LICENCE CLASS	BUILDER - OPEN		

COMPLETE DETAILS OF THIS LICENCE ARE  
AVAILABLE ONLINE AT [WWW.BSA.QLD.GOV.AU](http://WWW.BSA.QLD.GOV.AU)

**ATTACH  
CARD HERE**



# Builder's Licence (SA)



Government of South Australia  
Office of Consumer and  
Business Affairs

## CONTRACTORS LICENCE

Building Work Contractors Act 1995

This is to certify that

**SPANTECH PTY LTD**

is licensed/registered to carry on the business of

**BUILDING WORK CONTRACTOR**

**CONDITIONS:**

RESIDENTIAL BUILDING WORK  
COMMERCIAL BUILDING WORK  
INDUSTRIAL BUILDING WORK

Lic/Reg number **BLD 219033**

Expires **30-04-2013**

Date first issued **02-04-2009**

A handwritten signature in black ink, appearing to read 'A. Gale'.

Authorised by  
Commissioner for Consumer Affairs

OLE4081A

# Quality Assurance

**bsi.**



## Certificate of Registration

QUALITY MANAGEMENT SYSTEM - ISO 9001:2008

This is to certify that:

Spantech Pty Ltd  
36 Hutchinson Street  
Burleigh Junction QLD 4220

Holds Certificate Number:

**FS 605054**

and operates a Quality Management System which complies with the requirements of ISO 9001:2008 for the accompanying scope.

Provision of design, construction and project management services including hardened and other special purpose defence buildings and commercial buildings using Spantech and conventional building systems.

For and on behalf of BSI:

Nicholas Koukoulas, Managing Director, BSI Group ANZ

Originally registered: 28/05/1997

Latest Issue: 24/01/2014

Expiry Date: 31/01/2017



Page: 1 of 1

...making excellence a habit.™

This certificate was issued electronically and remains the property of BSI Group ANZ Pty Limited, ACN 078 659 211 and is bound by the conditions of contract. This certificate can be verified at [www.bsi-global.com/clientdirectory](http://www.bsi-global.com/clientdirectory). Printed copies can be validated at [www.bsi-global.com/ClientDirectory](http://www.bsi-global.com/ClientDirectory), or [www.jas-anz.org/register](http://www.jas-anz.org/register) or telephone + 61 2 9925 2700. Further clarifications regarding the scope of this certificate and the applicability of ISO 9001:2008 requirements may be obtained by consulting the organization. This certificate is valid only if provided original copies are in complete set.

Information and Contact: BSI Group ANZ Pty Limited, ACN 078 659 211: Suite 2, Level 7, 15 Talavera Road, Macquarie Park, NSW 2113  
A Member of the BSI Group of Companies.

# Occupational Health and Safety

**bsi.**



## Certificate of Registration

SAFETY MANAGEMENT SYSTEM - AS/NZS 4801:2001

This is to certify that:

Spantech Pty Ltd  
36 Hutchinson Street  
Burleigh Junction QLD 4220

Holds Certificate Number:

**OHS 605055**

and operates a Safety Management System which complies with the requirements of AS/NZS 4801:2001 for the accompanying scope.

Provision of design, construction and project management services including hardened and other special purpose defence buildings and commercial buildings using Spantech and conventional building systems.

For and on behalf of BSI:

Nicholas Koukoulas, Managing Director, BSI Group ANZ

Originally registered: 25/03/2011

Latest Issue: 24/01/2014

Expiry Date: 31/01/2017



Page: 1 of 1

...making excellence a habit.™

This certificate was issued electronically and remains the property of BSI Group ANZ Pty Limited, ACN 078 659 211 and is bound by the conditions of contract. This certificate can be verified at [www.bsi-global.com/clientdirectory](http://www.bsi-global.com/clientdirectory). Printed copies can be validated at [www.bsi-global.com/ClientDirectory](http://www.bsi-global.com/ClientDirectory), or [www.jas-anz.org/register](http://www.jas-anz.org/register) or telephone + 61 2 9925 2700. Further clarifications regarding the scope of this certificate and the applicability of AS/NZS 4801:2001 requirements may be obtained by consulting the organization. This certificate is valid only if provided original copies are in complete set.

Information and Contact: BSI Group ANZ Pty Limited, ACN 078 659 211: Suite 2, Level 7, 15 Talavera Road, Macquarie Park, NSW 2113  
A Member of the BSI Group of Companies.

# Qld Government Prequalification



## Schedule to Registration of Prequalification (PQC)

---

### Spantech Pty. Ltd.

**Head Office**

36 Hutchinson Street BURLEIGH JUNCTION QLD 4220

PQC Registration Number: **00460**

PQC Rating: **Level 3**

Maximum Contract Value: **\$26,000,000.00**

Maximum Annualised Contract Value: **\$7,181,737.00**

Issue Date: **7 May 2013**

---

The Department of Housing and Public Works has processed the PQC Level and Registration Categories for the Registrant as provided in this Schedule.

Subject to the Conditions of Prequalification (PQC), the Registrant is eligible to be issued with tender documents for government building projects where the details on this schedule, including the registration details for each office of the Registrant, meet or exceed the PQC service requirements associated with the projects.

This Schedule supersedes any previously issued Schedule for this Registrant.





References

29 June 2012

Spantech Australia  
PO Box 622  
Broadbeach QLD 4218

Att: Richard Lucas  
Managing Director

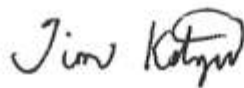
Dear Dick

Firstly, on behalf of the College Council, the Parents and Friends Association, and the students of the College, I would like to thank you and your company for the construction of the COLA at our Tallebudgera Campus.

The facility is a great addition to the fabric of the College, and your guidance and advice in the planning and construction of the building is greatly appreciated. Considering the size of the structure and the timing of its construction during our first term, it is a testament to Spantech that the process did not significantly interfere with daily operations of the College.

I would also like to take this opportunity to thank you for the donation of the safety mirror at the Sullivan Road entrance of the School. It will greatly enhance the safety of our community.

Kind Regards



Tim Kotzur  
**Principal**



# NORTHPINE CHRISTIAN COLLEGE

Preparatory to Year 12 • Hughes Road East, Dakabin • PO Box 33 Kallangur QLD 4503 • ABN 50 102 933 148  
Phone 07 3204 6511 • Fax 07 3886 1405 • E-mail [office@northpine.qld.edu.au](mailto:office@northpine.qld.edu.au) • CRICOS Provider No 01378B

21 June 2007

**To Whom It May Concern:**

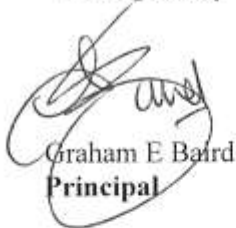
In 2006 Northpine Christian College contracted Spantech to construct an all-weather cover for our Secondary basketball/netball/volleyball courts. We were attracted to the Spantech concept because it offered the following advantages:

- very acceptable per m2 costs
- a structure which addressed our needs
- a building that is pleasant to look at and fits pleasantly in, and is sympathetic to the existing environment
- a structure with clean lines and no trusses, meaning that we do not have roosting birds and the associated problems; locations for dust and dirt to accumulate; or interruptions to the flow of the games being played.

The management of Spantech were easy to work with and clear in their communication and worked in a co-operative way to minimise interruptions to the college program.

We were so impressed with the company and the product that we are planning construct a similar building over our Primary courts in 2008.

Yours sincerely



Graham E Baird  
**Principal**



# Contacts



## Australia and New Zealand

**Spantech Pty Ltd**  
 ACN 010 544 108  
 ABN 53 010 544 108

*Postal Address:*

PO Box 622  
 Broadbeach Qld 4218 Australia

*Street Address:*

36 Hutchinson Street  
 Burleigh Qld 4220 Australia

*Telephone:* +61 7 5593 4449  
*Facsimile:* +61 7 5593 4448

*Email:* [enquiries@spantech.com.au](mailto:enquiries@spantech.com.au)  
*Internet:* [www.spantech.com.au](http://www.spantech.com.au)

## International Licensees

**Algeco**  
 Abu Dhabi  
 UAE

**Target Resources Sdn Bhd**  
 Kuala Lumpur  
 Malaysia

## International Agents

Contact Spantech for the details of agents in the following countries:

**India**  
**Kuwait**  
**Thailand**

