

# INSPIRING CURVES

by SUPAWOOD



*Inspiring ideas to create curves...*



*Browse for Inspiration...*

*Linings to sculpture your spaces  
Curves which make things flow*

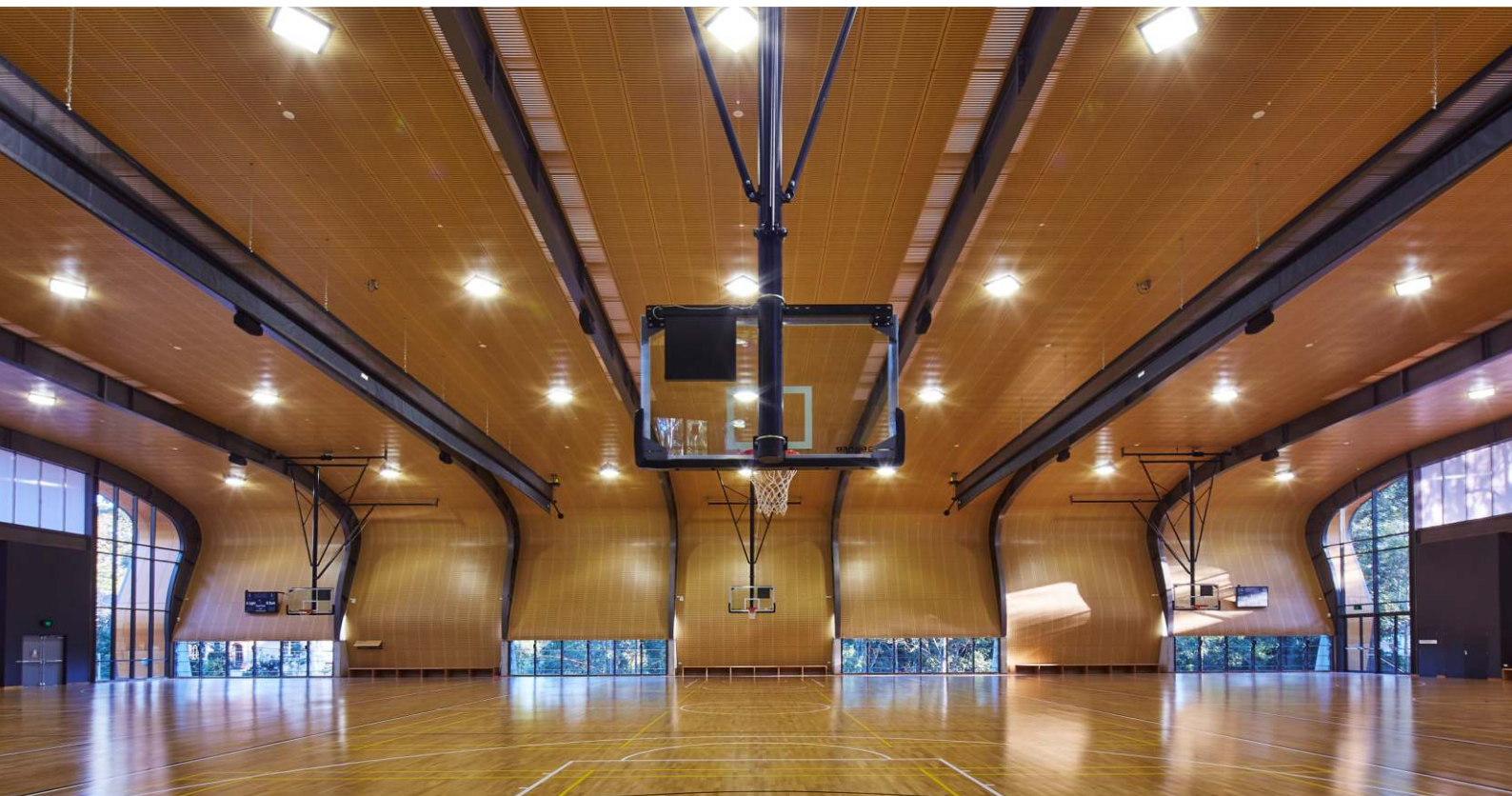
*When you are ready to create your  
curves, contact us for...*

- Creative in-depth know-how
- Supportive expert guidance

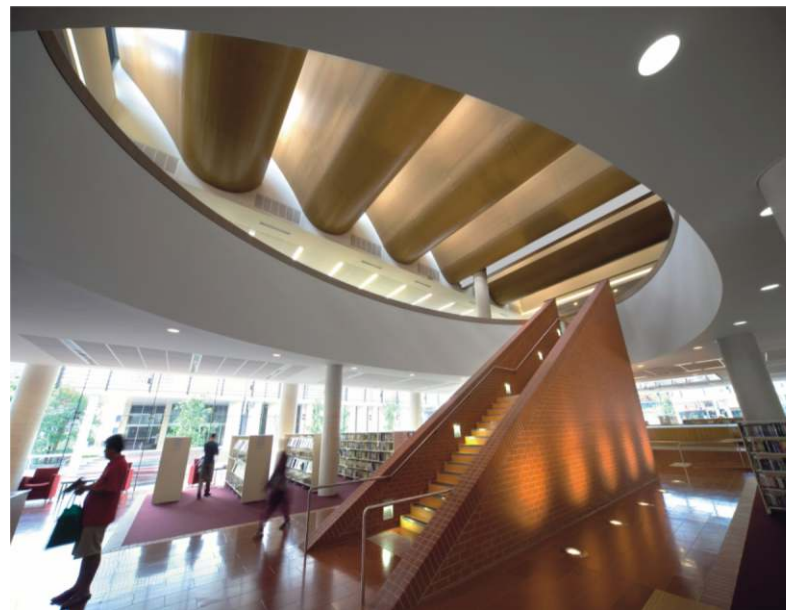




Curved awe-inspiring spaces with majestic curved ceilings







These pages feature curved acoustic and decorative ceilings created by using...

**SUPACOUSTIC & SUPALINE**

**Previous page:**

*Top left:* SUPACOUSTIC CUSTOM perforated panels in SUPAENEER have been used to the sweeping curved vaulted ceiling of a chapel.

*Top right:* SUPALINE panels in external grade Hoop Pine Plywood and finished with clear Wet Seal have been used to line the curving eaves on the exterior of a school sports facility.

*Bottom:* SUPACOUSTIC CUSTOM perforated panels in SUPAFINISH Fusion Maple create a dramatic sweeping curved wall in a school sports hall.

**This page:**

*Top:* SUPACOUSTIC CUSTOM perforated panels in SUPAENEER integrated with services form a dramatic arching ceiling in a museum lecture theatre.

*Bottom left:* Gently curving SUPACOUSTIC PLK Breeze patterned panels in SUPAFINISH Hoop Pine with custom borders enhance a hospital lounge area ceiling.

*Bottom right:* A row of tightly curved SUPALINE panels in SUPAENEER create a ceiling feature above the stairs in a public library which is suggestive of paper being fed through the rollers of a printing press.

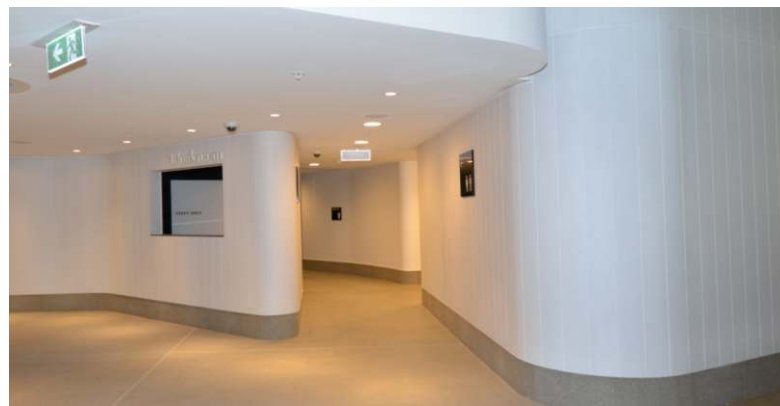


Use curved walls to create flow in spaces





# Curved painted walls & ceilings for class & features



## **Previous page from left clockwise:**

SUPAVENEER Hoop Pine SUPACOUSTIC CUSTOM slotted panels were curved onsite to line the interior of this multipurpose hall in a remote location.

SUPALINE wall panels in Sable timber veneer in a broad curve on the corner in a lounge bar softens the space.

SUPALINE panels in SUPAVENEER form a curved wall in the foyer of a school performing arts theatre.

SUPACOUSTIC Custom panels in SUPAVENEER Spotted Gum NTV with a music score theme pattern have been individually twisted on the face to achieve a remarkable 3D wall while addressing the most demanding acoustic specifications.

A sweeping curved wall of SUPALINE panels in SUPAFINISH with chrome

studs to emphasise the corners gives a quilted effect in the reception of a corporate building.

## **This page from left clockwise:**

The use SUPALINE in a SUPACOLOUR high gloss finish generates interesting light reflections while pre-curved corner panels add a touch of class throughout the expansive foyer of a prestige hotel.

SUPACOUSTIC CUSTOM perforated panels in White SUPACOLOUR flow in a curve from wall to ceiling defining a reception area.

SUPALINE custom vertically grooved panelling in white timber veneer softens the corners to create a smooth flow in the corridors of a sporting facility.

An undulating curved feature of SUPACOUSTIC CUSTOM perforated panels in SUPAFINISH flows over a reception desk.





Curved timber slatted walls & ceilings



These pages feature curved slatted wall and ceiling features using...

**SUPASLAT & DRIFTWOOD**





**Opposite page from top left clockwise:**

SUPASLAT panels in Blackbutt natural timber veneer undulate and twist across the expansive ceiling of the food court in a shopping centre.

DRIFTWOOD Whitewash used on curved columns and curved from ceiling to wall in a workplace fit-out.

SUPASLAT Grey Ironbark hardwood panels used under the extended eave feature on the outside of a city building.

DRIFTWOOD White used on the curved wall in the reception area of a corporate workplace fit-out.

**Above:**

SUPASLAT in panels finished in SUPAVENEER "featured grade" Blackbutt natural timber veneer not only curve but also twist in order to follow a complex and uniquely curved ceiling in the "Market Hall" of a shopping centre. This ceiling forms a wave effect which twists and curves in two directions and is integrated with south facing windows, the effect being repeated down the length of the mall.



# INSPIRING CURVES

by SUPAWOOD

For more product information and to discuss how to implement these ideas in your next project contact us...

**Website: [www.supawood.com](http://www.supawood.com)**

SUPAWOOD Head Office  
Australasian Support & Manufacturing  
Aust. Phone: +61 1800 002 123  
NZ Phone: +64 (9) 887 3234  
Email: [sales@supawood.com.au](mailto:sales@supawood.com.au)

SUPAWOOD UK  
UK & EU Support & Manufacturing  
Phone: +44 (0) 845 347 0026  
Email: [sales@supawood.co.uk](mailto:sales@supawood.co.uk)

#### **Front cover from top:**

The curved back wall of a lecture theatre is lined with SUPACOUSTIC CUSTOM slotted SUPACOLOUR White panels to address noise reverberation.

SUPACOUSTIC CUSTOM slotted panels in SUPAVENEER crown cut Hoop Pine form a giant curved wave over the ceiling of a university law faculty library.

SUPASLAT CUSTOM curved and twisted panels in SUPAVENEER Blackbutt NTV forms dramatic arching ceiling in shopping centre mall.

#### **Back cover:**

SUPACOUSTIC Custom slotted acoustic panels in SUPAFINISH Fusion Maple curve from the floor on a feature wall then continue across the ceiling expanse of a multi-purpose school sports hall

Supawood have extensive experience in creating curved linings.

From tight curves that are delivered to site preassembled and pre-finished, to curvable panels engineered to suit more gradual radii, Supawood have the know-how to ensure your project is a success.

Supawood not only supplies the linings, but also conducts in factory prototyping and testing to ensure the required radii will be successfully achieved. We will also instruct the installing contractor on how to frame and fix the panels, which is a key factor in achieving a smooth curve without 'kinking'.

Go ahead and browse through some of the projects we have already created. Contact us when you see an idea you'd like to create. We will work with you through the design and specification process right up to the construction stages ensuring the finished project is the fulfilment of your design intent.

For more product information and to discuss how to implement these ideas in your next project please contact us.