

A large, close-up, angled view of a steel roller shutter door, showing its horizontal corrugated texture and metallic finish. It occupies the left side of the frame, set against a deep blue sky with scattered white clouds.

# STEEL ROLLER SHUTTER DOORS

**KRGS**  
ROLLER GRILLES  
AND SHUTTERS

A DOOR DESIGN WITH YOU IN MIND





Unobtrusive  
Easy to use  
Quality & Strength

Retail, Commercial, suitable for both internal and external use

## STEEL ROLLER SHUTTER DOORS

**APPLICATION** - LOADING DOCKS, INDUSTRIAL FACTORY UNITS, COMMERCIAL BUILDINGS

**Drum** - manufactured from 165mm or 220mm seamless tube attached to self-lubricating bearings rotating on a steel shaft. The shaft shall be fitted with helical spints designed to counterbalance the curtain weight throughout its operation. The drum shall be designed to give minimum deflection over the span.

**Curtain** - constructed of cold rollformed interlocking galvanised steel slats with face depth 50mm, 75mm or 100mm x 1mm or 0.8mm thick, Note: Different profiles and gauges are also available. Nylon end clips are fitted to prevent lateral movement and smooth operation. Wicket Gates for access are optional.

**Bottom Rail** - extruded aluminium angle section with rubber weather seal manufactured to interlock with curtain.

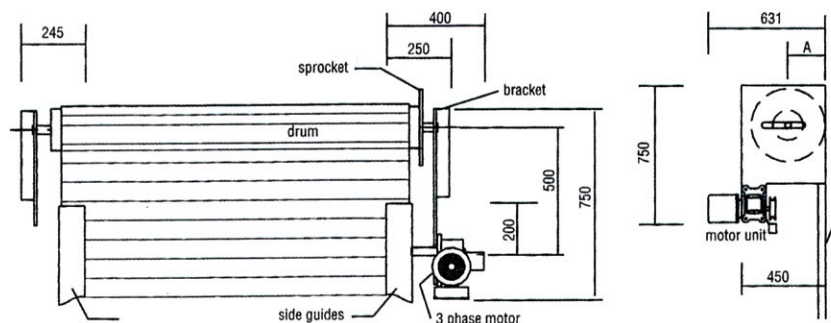
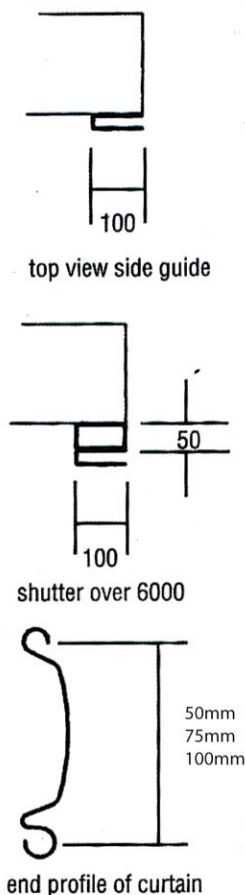
**Track** - pressed steel channel 100mm or 75mm to give ease of operation and effective curtain control. Windlock guides are used where applicable.

**Brackets** - steel brackets 10mm thick are attached to walls by three dynabolts unless welded directly to steelwork.

**Locking** - manually operated doors have heavy duty padbolts fitted to each side of the bottom rail to which padlocks can be fitted.

**Operation** - hand lift, single or double reduction chain hoist or single or 3 phase electric operation with standard 240 volt reversing contactor.

**Finishes** - Hot Dip Galvanised Finish, Full range of powdercoat colours are available on request.



### Sydney

Unit 6/1 Canal Rd,  
St Peters NSW 2044  
Phone 02 9519 7822  
1800 897 822

FAX 02 9519 8922  
Email clayton@kingsdoors.com.au  
Web www.kingsdoors.com.au

### Brisbane

Unit 15/315 Archerfield Rd,  
Richlands QLD 4077  
Phone 07 3375 5855  
Fax 07 3375 3070

### Melbourne

116 Wedgewood Rd,  
Hallam Vic 3803  
Phone 03 9796 5899  
Fax 03 9796 5891

**KRGS**

ROLLER GRILLES  
AND SHUTTERS

A DOOR DESIGN WITH YOU IN MIND