



# ARCHITECTURAL FABRICS



July 2011

## Nolan.UDA

[www.NolanUDA.com.au](http://www.NolanUDA.com.au)

# NAIZIL ARCHITECTURAL FABRICS

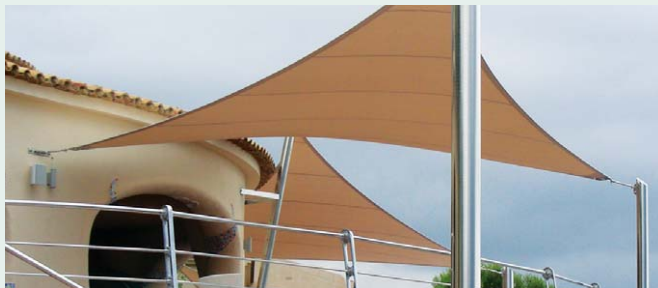


The 'COVER' range of PVC coated polyester fabrics are designed for use in tensioned structures, where the fabric forms an integral part of the support system. The fabrics are engineered and manufactured in Italy by Nazil and classified according to 'type' as defined by European design codes and fully comply with each specification required. Biaxial test data for each type is available for use in CAD systems.

Although minimum quantities apply, additional non-standard options are available to designers. These include a choice of lacquered finishes (*see specifier guide below*), anti-wicking scrim, opaque or translucent properties and the patented Coibentato (insulation) cladding which has significant benefits in climate control.



## KEY PRODUCT FEATURES



- ✓ *Made in Italy*
- ✓ *Lacquered finishes*
- ✓ *Dimensionally stable*
- ✓ *High resistance to soiling*
- ✓ *High tear & tensile strength*
- ✓ *UV stabilised*
- ✓ *Mildew resistant*
- ✓ *Fire retardant*
- ✓ *Supported with comprehensive warranties*

## SPECIFIER GUIDE

### Lacquer finishes to coated fabrics

'Cover' structural fabrics are available in the choice of three lacquered finishes. All of which are designed to protect and insulate the PVC coating from damaging UV radiation and improve cleanability. Each finish has varying degrees of effectiveness and weldability.

A pure PVDF lacquer is a stable and proven performer. It has a high resistance to chemical attack, UV and gamma radiation and excellent mechanical properties in tension and deflection. However PVDF fabrics cannot be welded together without physically removing the coating at the joins which result in fractured protection. A blend of acrylic and PVDF solves this problem, but at the expense of performance which is reflected in the duration of the warranty offered. PVDF fabrics have a 10 year warranty where as acrylic/PVDF blends have a 6 year warranty.

The fully weldable TiO<sub>2</sub> (TITAN W) lacquer is a revolutionary new finish. Research has shown that under the action of UV light, TiO<sub>2</sub> has strong oxidative decomposition powers, thus exhibiting anti-fouling, anti-microbial and deodorising properties. It also becomes super-hydrophilic, forcing dirt on the surface to dislodge. Thus, the net outcome of a TiO<sub>2</sub> lacquer is UV protection and a remarkable self cleaning effect. Naizil textiles with the TITAN W lacquer are supported with a 10 year warranty.

# PRODUCT DETAILS

## PS 680

PS 680 is an Italian made fabric designed to combine performance with style. The technical performance is outstanding with exceptional tensile strength and dimensional stability. The 28 colour pallet is complimented with 4 metallic finishes and an opaque block-out meaning designers are only limited by their imagination. Typical applications include small to medium structures, shade sails, building facades and awnings.

**Dimensions:** Width: 250cm Length: 65m

### Colours available:



### Specifications

Type of Basic Fabric	High Tenacity Polyester
Yarn Size	1100dtex
Total Weight	Std: 680gsm B/O: 720gsm
Fabric Thickness	Std: 0.52mm B/O: 0.55mm
Tensile Strength (warp & weft)	2800N/5cm
Tear Strength (warp & weft)	220N
Cold Resistance	-30°C
Heat Resistance	+70°C
Flame Retardancy	Yes*
Adhesion	40N/2cm
Lacquer	Acrylic both sides

\*FR certificates available on request

Colour	 410 White	 683 Cream	 414 Vanilla		
Part #	13PS 250 WHI	13PS 250 CRE	13PS 250 VAN		
Colour	 419 Latte	 420 Lemon	 411 Butter		
Part #	13PS 250 LAT	13PS 250 LEM	13PS 250 BUT		
Colour	 421 Tangerine	 422 Flame	 629 Magenta		
Part #	13PS 250 TAN	13PS 250 FLA	13PS 250 MAG		
Colour	 409 Lavender	 412 Sky	 413 Sapphire	 261 Ink	 425 Royal
Part #	13PS 250 LAV	13PS 250 SKY	13PS 250 SAP	13PS 250 INK	13PS 250 ROY
Colour	 262 Indigo	 431 Midnight	 265 Forest	 432 Emerald	 424 Peacock
Part #	13PS 250 IND	13PS 250 MID	13PS 250 FOR	13PS 250 EME	13PS 250 PEA
Colour	 426 Kiwi	 408 Lime	 415 Ash	 423 Zinc	 263 Pewter
Part #	13PS 250 KIW	13PS 250 LIM	13PS 250 ASH	13PS 250 ZIN	13PS 250 PEW
Colour	 416 Platinum	 417 Smoke	 418 Carob	 427 Black	 Block-Out
Part #	13PS 250 PLA	13PS 250 SMO	13PS 250 CAR	13PS 250 BLA	13PS 250 BO
Colour	 084 Silver	 237 Gold	 238 Bronze	 218 Opal	
Part #	13PS 250 SIL	13PS 250 GOL	13PS 250 BRO	13PS 250 OPA	



## PRODUCT DETAILS

### Type 1: SPORT COVER

Sport Cover is one of the most popular Type 1 architectural fabrics in the world. Proven and trusted for decades, this fabric will suit most medium size structures. It features the market leading TITAN W lacquer for ease of maintenance and peace of mind.

#### Dimensions:

Width: 250cm Length: 50m

**TITAN W**  
Lacquering



Colour	410 White	136 Ivory
Part #	13SPO 250 WHI	13SPO 250 IVO

### Type 2: BIG COVER

If you're looking for a high specification architectural fabric, look no further than Big Cover. This Type 2 heavy duty fabric features a high tenacity panama weave and is finished with the superior TITAN W lacquer. Designed to withstand incredible loads, Big Cover can be used with complete confidence.

**TITAN W**  
Lacquering



Colour: 410 White

Part # 13BIG 250 WHI

**Dimensions:** Width: 250cm Length: 50m

## INDENT FABRICS

### Type 3: PLUS COVER



### Type 4: STRONG COVER



### Type 5: EXTRA COVER



Detailed product specifications for Type 1-5 fabrics are listed on the following page

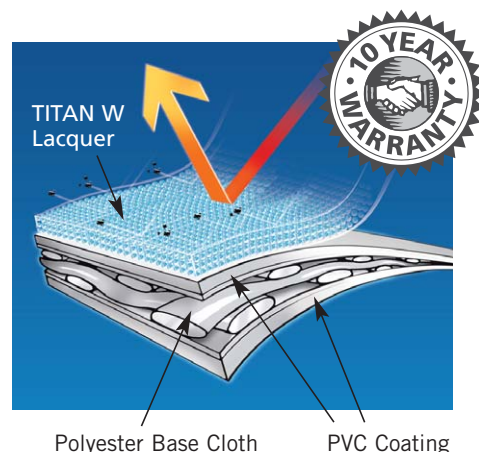
**TITAN W**  
Lacquering

TITAN W is a surface coating that has been developed in conjunction with some of the worlds leading chemical engineers.

TITAN W is the latest generation of lacquering used in Architectural fabrics. It makes the most of innovative nanotechnologies, combining special particles of titanium dioxide (TiO<sub>2</sub>) with fluoro polymers. The effectiveness of TITAN W versus Acrylic and PVDF coatings has been proven countless times through both accelerated weathering tests and general exposure to the elements.

Fabrics coated with TITAN W provide 3 major benefits;

- Through its sophisticated protection system, physical properties and performance are maintained over long periods of time.
- TITAN W provides a state of the art self-cleaning finish to maintain the original appearance.
- Fabrics coated with TITAN W can be welded without any surface preparation.



**SPECIFICATIONS**

	Standard	SPORT COVER Type 1	BIG COVER Type 2	PLUS COVER Type 3	STRONG COVER Type 4	EXTRA COVER Type 5
Type of base fabric	EN-ISO2076	High Tenacity Polyester				
Yarn size (dtex)	EN-ISO7211	1100	1100	1670	1670	2200
Yarn construction warp-weft (N°/cm)	EN-ISO4602	9 x 9	12 x 12 Panama 2/2	10 x 10.5 Panama 2/2	14 x 14 Panama 3/3	14 x 14 Panama 3/3
Total weight (gsm)	EN-ISO2286	720	950	1100	1300	1450
Fabric thickness (mm)	EN-ISO2286	0.58	0.75	0.90	1.05	1.20
Tensile strength warp (N/5cm)	EN-ISO1421	3000	4000	5700	7500	10000
Tensile strength weft (N/5cm)	EN-ISO1421	3000	4000	5400	6500	9000
Tear strength -warp (N)	DIN53363	300	500	850	1200	1700
Tear strength -weft (N)	DIN53363	300	500	850	1200	1700
Cold resistance (°C)	Internal Test	-30	-30	-30	-30	-30
Heat resistance (°C)	Internal Test	+70	+70	+70	+70	+70
Light fastness (value)	EN-ISO105B02	6	6	6	6	6
Bending resistance (N°)	DIN53359	100,000	100,000	100,000	100,000	100,000
Seam strength (N/2cm)	EN-ISO2411	40	40	45	45	45
Light transmission (white colour) – $T_V$ (%)	ASTM E 903 UNI EN 410	8.0	5.9	4.7	4.3	4.3
Light reflection (white colour) – $\rho_V$ (%)	ASTM E 903	86.7	88.4	89.3	89.1	87.8
UV transmission (white colour) – $T_{UV}$ (%)	ASTM E 903 UNI EN 410	0.02	<0.005	<0.005	0.03	0.03

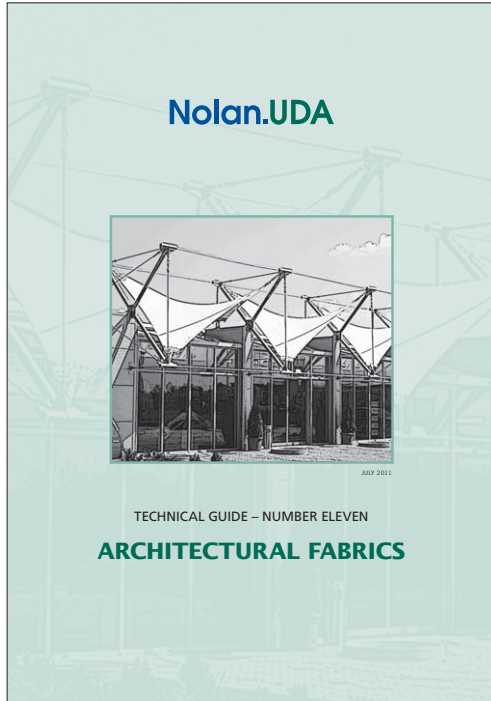
**FIRE RETARDANCY**

COUNTRY	STANDARD	COUNTRY	STANDARD
Australia	AS 1530.3	Germany	DIN 4102 B1
Italy	Class 2	Spain	M1 & M2
United Kingdom	BS 7837: 1996	France	M2
Canada	Large-Small Scale NFPA 701-1989	Denmark, Norway & Sweden	SIS 65 00 82
U.S.A.	California State Marshall	China	GB 8624 B1
FR certificates and further information available upon request			

# TECHNICAL SUPPORT

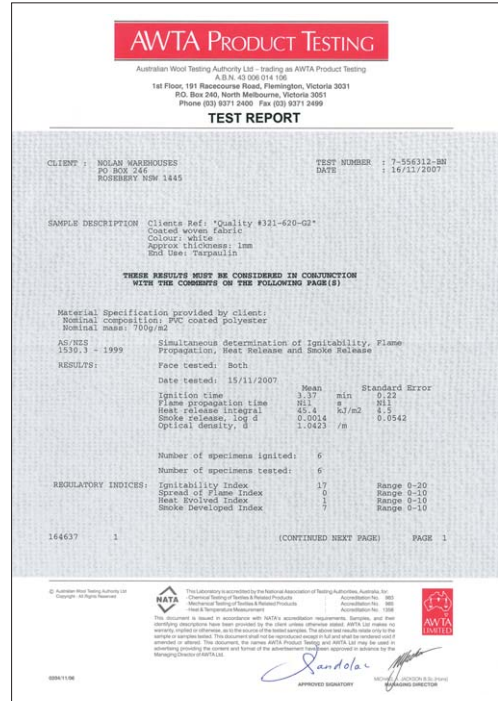
Nolan.UDA recognises architectural textiles can be a complex industry. We have in place a support program to ensure designers, fabricators and installers have access to the appropriate information to ensure each project is a success. Below is an overview of the data available. *To request information, call your local Nolan.UDA branch.*

## Architectural Fabrics Technical Guide



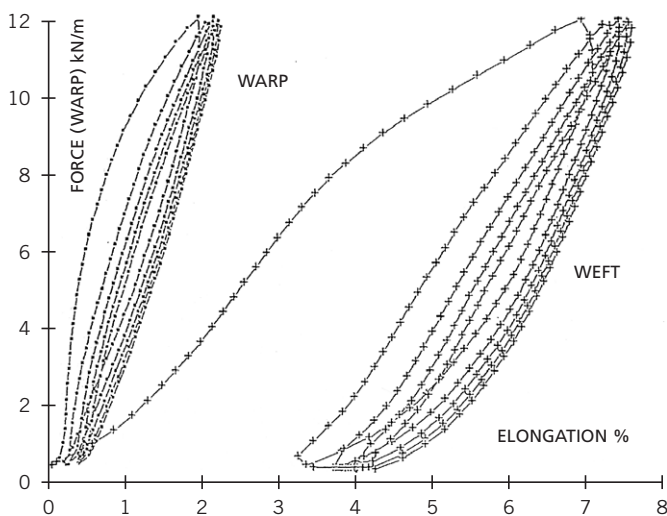
Technical Guide 11 provides Naizil product information, technical specifications, fabrication and installation advice.

## Fire Certification



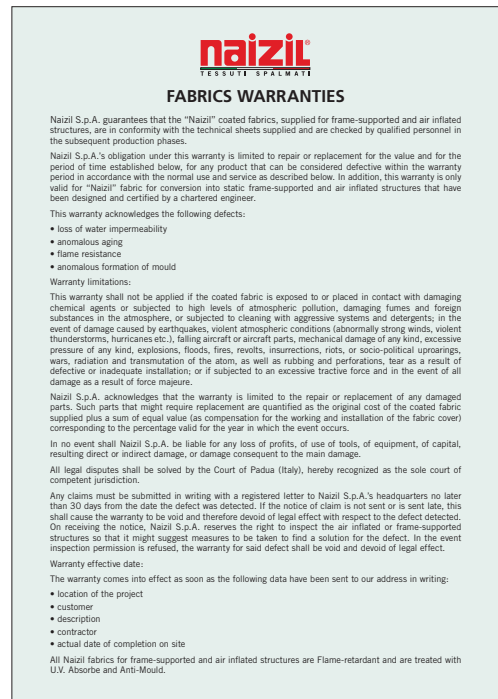
Flammability certificates are available for Australian, European, North American and South-East Asian standards.

## Physical Specifications



Available to engineers and designers is a complete range of plotted test data for Biaxial, Uniaxial and Cyclic loading.

## Commercial Warranty



Naizil products are supported with a comprehensive commercial warranty.



FLEXIBILITAS SOLIS

**naizil**<sup>®</sup>  
COATED FABRICS S.p.A.

**COMING SOON!**

**naizil**  
**SOLARPANEL**



Naizil SOLARPANEL is an exciting new product combining modern technology and environmental responsibility. This solar panel system offers a perfect solution for all surfaces covered with PVC coated fabrics. Clean energy is produced by capturing the sun rays through a flexible photovoltaic panel perfectly integrated in a coated fabric module.



# Nolan.UDA

## **SYDNEY**

3 Bradford Street, Alexandria, NSW 2015  
Telephone: (02) 9669 3333  
Fax: (02) 9669 3166

## **NEWCASTLE**

66 Orlando Road, Lambton, NSW 2299  
Telephone: (02) 4957 7766  
Fax: (02) 4952 6737

## **BRISBANE**

14 Lions Park Drive, Yatala, QLD 4207  
Telephone: (07) 3387 8500  
Fax: (07) 3807 8300

## **MELBOURNE**

55 Cleeland Road, Oakleigh South, VIC 3167  
Telephone: (03) 9545 5588  
Fax: (03) 9545 5582

## **ADELAIDE**

489 Cross Keys Road, Cavan, SA 5094  
Telephone: (08) 8260 1055  
Fax: (08) 8260 1655

## **PERTH**

18 Hazelhurst Street, Kewdale, WA 6105  
Telephone: (08) 9376 2666  
Fax: (08) 9353 1215

## **DARWIN**

Unit 1, 6 Finnis Street, Darwin, NT 0800  
Telephone: (08) 8981 1555  
Fax: (08) 8981 1533

[info@nolans.com.au](mailto:info@nolans.com.au)

[www.NolanUDA.com.au](http://www.NolanUDA.com.au)